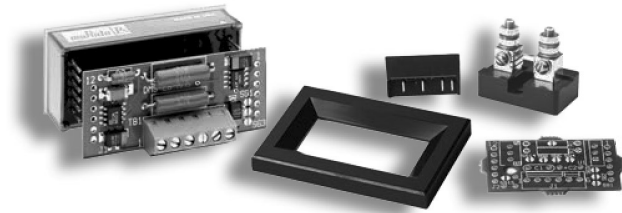


# Panel Meter Accessories



## Applications Boards

These application / prototype boards are designed to solder to the back of many of our 12-pin DMS-20 and DMS-30 Series meters. These rugged, low-cost boards can quickly configure DMS meters for a wide variety of popular applications, such as engineering scaling and rms-to-DC conversion. All application boards feature either screw-style terminal blocks or Molex brand crimp connections for connecting signal and power lines. Convenient solder gaps are provided for decimal point selection.

Description	Part No.
Multi-Purpose Application Board for DMS-30 -40 Series	DMS-EB-C
Multi-Purpose Application Board for DMS-20PC/LCD Series	DMS-EB2-C
DC-DC Converter and Isolation Board for DMS-30PC/LCD	DMS-EB-DC/DC-C
AC-to-RMS Converter Board for DMS-30PC/LCD Meters	DMS-EB-RMS-C

## DC Current Shunts

Thirteen 50mV and 100mV, base-mounted DC shunts are designed to connect directly to the rear-mounted terminal block on DCA5-20PC DC ammeters. All shunts feature ultra-stable manganin shunt elements that have an accuracy of  $\pm 0.25\%$  (max.).

Murata-PS Part No.	Rated Current/Output	Resistance @ 25°C
3020-01096-0	50A/50mV	0.001
3020-01097-0	5A/50mV	0.01
3020-01098-0	20A/50mV	0.0025
3020-01099-0	100A/50mV	0.0005
3020-01100-0	150A/50mV	0.00033
3020-01101-0	200A/50mV	0.00025
3020-01102-0	300A/50mV	0.000167
3020-01103-0	500A/50mV	0.0001
3020-01104-0	800A/50mV	0.0000625
3020-01105-0	1000A/50mV	0.00005
3020-01106-0	1200A/50mV	0.0000417
3020-01107-0	10A/100mV	0.01
3020-01108-0	100A/100mV	0.001

## High-Efficiency Switching Regulators

78xxSR series switching regulators can be used with many of our application boards to enable DMS meters to operate from DC power sources as high as +36Vdc. Unlike conventional linear devices, these switching regulators are so efficient that no heat sinks or fans are required for full-load operation.

Part No.	Output Voltage	Output Current	Input Voltage
Standard Pin Package			
7803SR-C	+3.3Vdc	0.5A	+7.5-36Vdc
7805SR-C	+5.0Vdc	0.5A	+7.5-36Vdc
7812SR-C	+12.0Vdc	0.4A	+15-36Vdc
78SR-3.3/2-C	+3.3Vdc	2.0A	+8-32Vdc
78SR-5/2-C	+5.0Vdc	2.0A	+8-32Vdc
Horizontal Pin Package			
7803SRH-C	+3.3Vdc	0.5A	+7.5-36Vdc
7805SRH-C	+5.0Vdc	0.5A	+7.5-36Vdc
7812SRH-C	+12.0Vdc	0.4A	+15-36Vdc
78SRH-3.3/2-C	+3.3Vdc	2.0A	+8-32Vdc
78SRH-5/2-C	+5.0Vdc	2.0A	+8-32Vdc

## AC Current Transformers

These 5A output, "donut" style AC current transformers can be used with our ACA5-20PC and ACA5-20RM series AC ammeters to measure currents from 50 to 2000 Amps. All models have 2-foot-long (0.6m) wire leads and are UL recognized components.

Part No.	Current Ratio	Accuracy	Burden--VA (Ohms)
7020-01036-0	50:5	$\pm 2\%$	1.5 (0.06)
7020-01037-0	75:5	$\pm 2\%$	3.0 (0.12)
7020-01038-0	100:5	$\pm 1\%$	3.0 (0.12)
7020-01039-0	150:5	$\pm 1\%$	6.0 (0.24)
7020-01040-0	200:5	$\pm 1\%$	8.0 (0.32)
7020-01041-0	250:5	$\pm 1\%$	10.0 (0.40)
39-3681407*	300:5	$\pm 1\%$	12.5 (0.50)
39-3681408*	400:5	$\pm 1\%$	12.5 (0.50)
39-3681409*	500:5	$\pm 1\%$	20.0 (0.80)
7020-01042-0	600:5	$\pm 1\%$	10.0 (0.40)
7020-01043-0	750:5	$\pm 1\%$	10.0 (0.40)
7020-01044-0	1000:5	$\pm 1\%$	10.0 (0.40)
7020-01045-0	1500:5	$\pm 1\%$	12.5 (0.50)
7020-01046-0	2000:5	$\pm 1\%$	15.0 (0.60)

\*Not available as RoHS

## Bezels and Panel Cutout Punches

Four ABS plastic bezel assemblies simplify panel mounting of DMS series meters. These bezel assemblies are available with and without EPDM sealing gaskets for applications that demand environmental protection from dust and moisture. Two matching panel cutout punches make accurate mounting holes for prototype or small production runs.

Description	Part No.
Bezel for DMS-30 and DMS-40	DMS-BZL1-C
Bezel with EPDM sealing gasket for all DMS-30 -40 Meters	DMS-BZL2-C
Bezel for all DMS-20 Meters	DMS-BZL3-C
Bezel with EPDM sealing gasket for all DMS-20 Meters	DMS-BZL4-C
Panel cutout punch for DMS-30 and DMS-40 Meters	DMS-30-CP
Panel cutout punch for DMS-20 Meters	DMS-20-CP

## Panel Mount Connectors

Six-position Molex brand connector-housings with matching crimp terminals are available to make power and signal connections to panel mounted DMS series meters. Each typical DMS meter installation requires two housings and 12 crimp terminals. See the individual product data sheet for more information.

Description	Part No.
6-position connector housing. Use with crimp terminal 4400-01032-0.	4320-01069-0
Crimp terminal for connector housing 4320-01069-0. Accepts 22-26 AWG wire.	4400-01032-0

## Miscellaneous Items

Description	Part No.
Unpopulated DMS-EB2 PC-Board	5302-01243-0
Unpopulated DMS-EB PC-Board	5302-01236-0
DMS-20 Retaining Clip	5252-01127-0
DMS-30 Retaining Clip	5252-01126-0
DMS-30 Red Case	5252-01145-0
DMS-20 Red Case	5252-01130-0
DMS-30 Bezel and Red Filter	5252-01160-0
DMS-20 Bezel and Red Filter	5252-01161-0
DMS-30 Panel Mount Adapter	4652-01101-0
DMS-20 Panel Mount Adapter	4652-01100-0
12-position PC-Board Socket	4320-01072-0
6-position PC-Board Socket	4320-01074-0