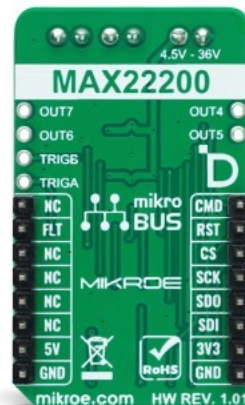


H-Bridge 11 Click



PID: MIKROE-5636

H-Bridge 11 Click is a compact add-on board that allows a voltage to be applied across a load in either direction. This board features the [MAX22200](#), an octal serial-controlled solenoid and motor driver from [Analog Devices](#). The MAX22200 is SPI-configurable and rated for an operating voltage range from 4.5V to 36V. Each channel features a low impedance push-pull output stage with sink-and-source driving capability up to 1A RMS driving current. Its internal half-bridges can be configured as low-side or high-side drivers, supports two control methods (voltage and current drive regulation), and features a full set of protections and diagnostic functions. This Click board™ is well-suited for solenoid driver applications (valve control, relays control) in which low power consumption and a high level of integration are required.

H-Bridge 11 Click is supported by a [mikroSDK](#) compliant library, which includes functions that simplify software development. This [Click board™](#) comes as a fully tested product, ready to be used on a system equipped with the [mikroBUS™](#) socket.

Mikroe produces entire development toolchains for all major microcontroller architectures.

Committed to excellency, we are dedicated to helping engineers bring the project development up to speed and achieve outstanding results.



ISO 27001: 2013 certification of informational security management system.
ISO 14001: 2015 certification of environmental management system.
OHSAS 18001: 2008 certification of occupational health and safety management system.



ISO 9001: 2015 certification of quality management system (QMS).

Specifications

Type	Brushed
Applications	Can be used for solenoid driver applications (valve control, relays control) in which low power consumption and a high level of integration are required
On-board modules	MAX22200 - serial-controlled solenoid and motor driver from Analog Devices
Key Features	Eight half-bridges up to +36V, high performance, programmable output current, two control methods, high flexibility, high-speed SPI interface, full set of protection and diagnostic features, and more
Interface	SPI
Compatibility	mikroBUS
Click board size	M (42.9 x 25.4 mm)
Input Voltage	3.3V or 5V

Resources

[mikroBUS™](#)

[mikroSDK](#)

[Click board™ Catalog](#)

[Click Boards™](#)

Downloads

[H-Bridge 11 click example on Libstock](#)

[MAX22200 datasheet](#)

[H-Bridge 11 click 2D and 3D files](#)

[H-Bridge 11 click schematic](#)

Mikroe produces entire development toolchains for all major microcontroller architectures.

Committed to excellency, we are dedicated to helping engineers bring the project development up to speed and achieve outstanding results.



ISO 27001: 2013 certification of informational security management system.
ISO 14001: 2015 certification of environmental management system.
OHSAS 18001: 2008 certification of occupational health and safety management system.



ISO 9001: 2015 certification of quality management system (QMS).