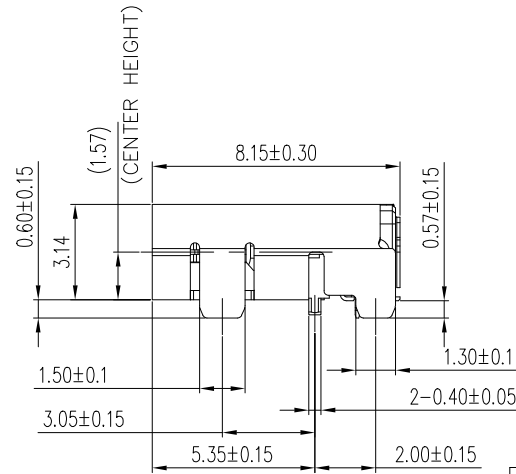
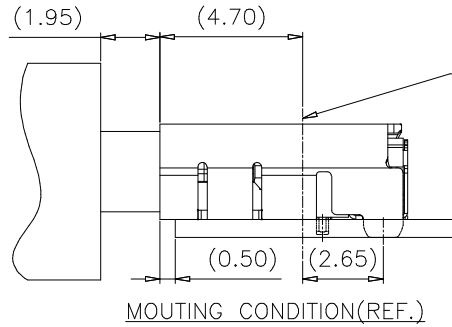
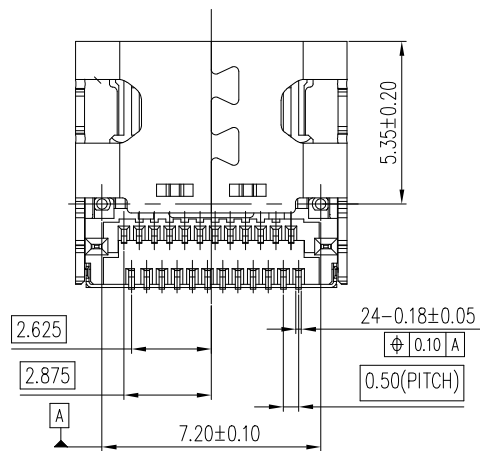
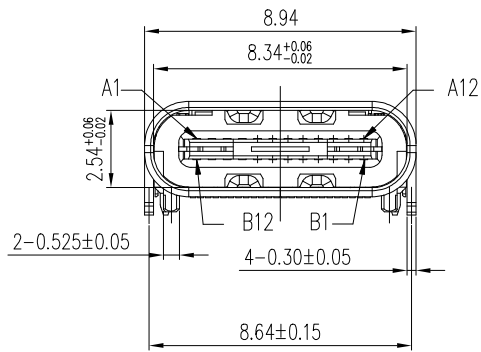
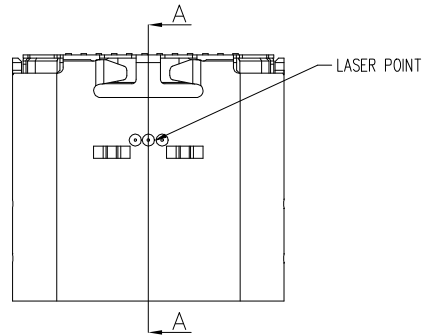
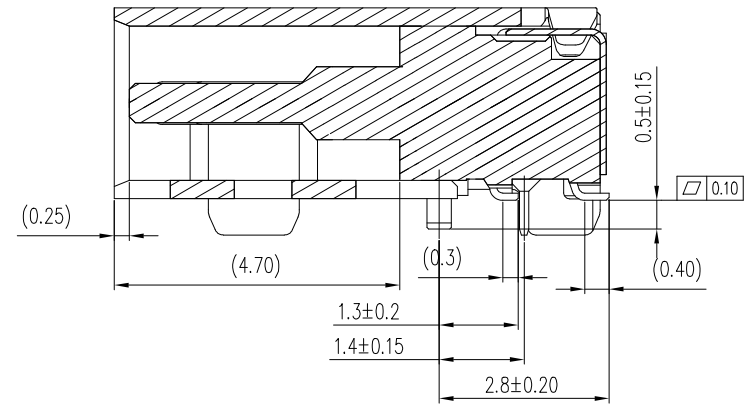


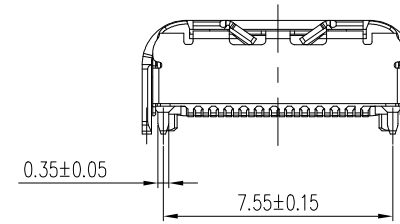
PRODUCT NUMBER
SEE PART NO. SCHEME



MATING BOTTOM SURFACE



SECTION A-A(SCALE 2:1)



USB TYPE-C PIN ASSIGNMENTS

PIN NUMBER	SIGNAL NAME	PIN NUMBER	SIGNAL NAME
A1	GND	B12	GND
A2	SSTXp1	B11	SSRXp1
A3	SSTXn1	B10	SSRXn1
A4	Vbus	B9	Vbus
A5	CC1	B8	SBU2
A6	Dp1	B7	Dn2
A7	Dn1	B6	Dp2
A8	SBU1	B5	CC2
A9	Vbus	B4	Vbus
A10	SSRXn2	B3	SSTXn2
A11	SSRXp2	B2	SSTXp2
A12	GND	B1	GND

⑦	TOP CONTACT	1 SET	COPPER ALLOY	NI UNDER PLATING.
⑥	BOTTOM CONTACT	1 SET	COPPER ALLOY	MATTE TIN PLATING ON SOLDER AREA.
⑤	MID PLATE	1 PCS	STAINLESS	GOLD PLATING ON CONTACT AREA. (SEE P/N SCHEME)
④	SHIELDING PLATE	1 PCS	STAINLESS	NI PLATING OVERALL.
③	HOUSING	1 PCS	THERMOPLASTIC	UL94V-0, BLACK
②	REAL SHELL	1 PCS	STAINLESS	NI PLATING OVERALL.
①	MIAN SHELL	1 PCS	STAINLESS	NI PLATING OVERALL.

ITEM	PART NAME	QTY	MATERIAL	REMARK
	mat'l. code		surface ISO 1302 ✓ tolerance ISO 406 ISO 1101	product family HPL 511
	ltr	ecn no	dr	date
A		TAI	2015-10-06	
B	ELX-T-23963	YY	2016-04-26	
C	ELX-N-82017	LQ	2017-10-09	0°±3°
D	ELX-N-40260-1	YY	2020-03-05	dr
			KENNY TAI	2015-09-21
			engr Yuan-Yuan Bao	2021-03-02
			chr Li-Qing Lei	2021-03-02
			appd Tim Yao	2021-03-02
sheet index	revision sheet			

PRODUCT NUMBER

SEE PART NO. SCHEME

NOTES:

1. ELECTRICAL:

1-1. CONTACT CURRENT RATING:

5.0A FOR VBUS AND GND.

(i.e., Pins A4,A9,B4,B9)

1.25A FOR Vconn AND GND.

(i.e., Pins B5,A1,A12,B1,B12)

0.25A FOR ALL THE OTHERS CONTACTS.

1-2. GROUND TERMINALS(A1,A12,B1,B12)

& MID-PLATE & SHELL ARE
SHORT TOGETHER

1-3. INSULATION RESISTANCE:

100 MEGAOHMS MIN. AT 250VDC.

1-4. DIELECTRIC WITHSTANDING VOLTAGE:

100VAC MIN.

1-5. LOW LEVEL CONTACT RESISTANCE:

INITIAL: 40mΩ MAX.; AFTER ENVIRONMENTAL
TEST: MAX. CHANGE 10mΩ.

2.MECHANICAL CHARACTERISTICS:

2-1. INSERTION FORCE:

5N~20N.

2-2. EXTRACTION FORCE:

8N~20N FROM 1 TO 1000 CYCLES

6~20N FROM 1001 TO 10000 CYCLES.

2-3. DURABILITY:

10,000 MATING CYCLES.

2-4. OPERATING TEMPERATURE:

-55°C TO +85°C

2-5. STATE STORAGE TEMPERATURE:

-55°C TO +85°C

3. CAPABLE TO 260°C REFLOW SOLDER FOR 10 SEC.

4. PRODUCT SPECIFICATION: GS-12-1336

5. PACKAGE SPECIFICATION: GS-14-2487

PART NUMBER SCHEME:

10137065-000 X X LF

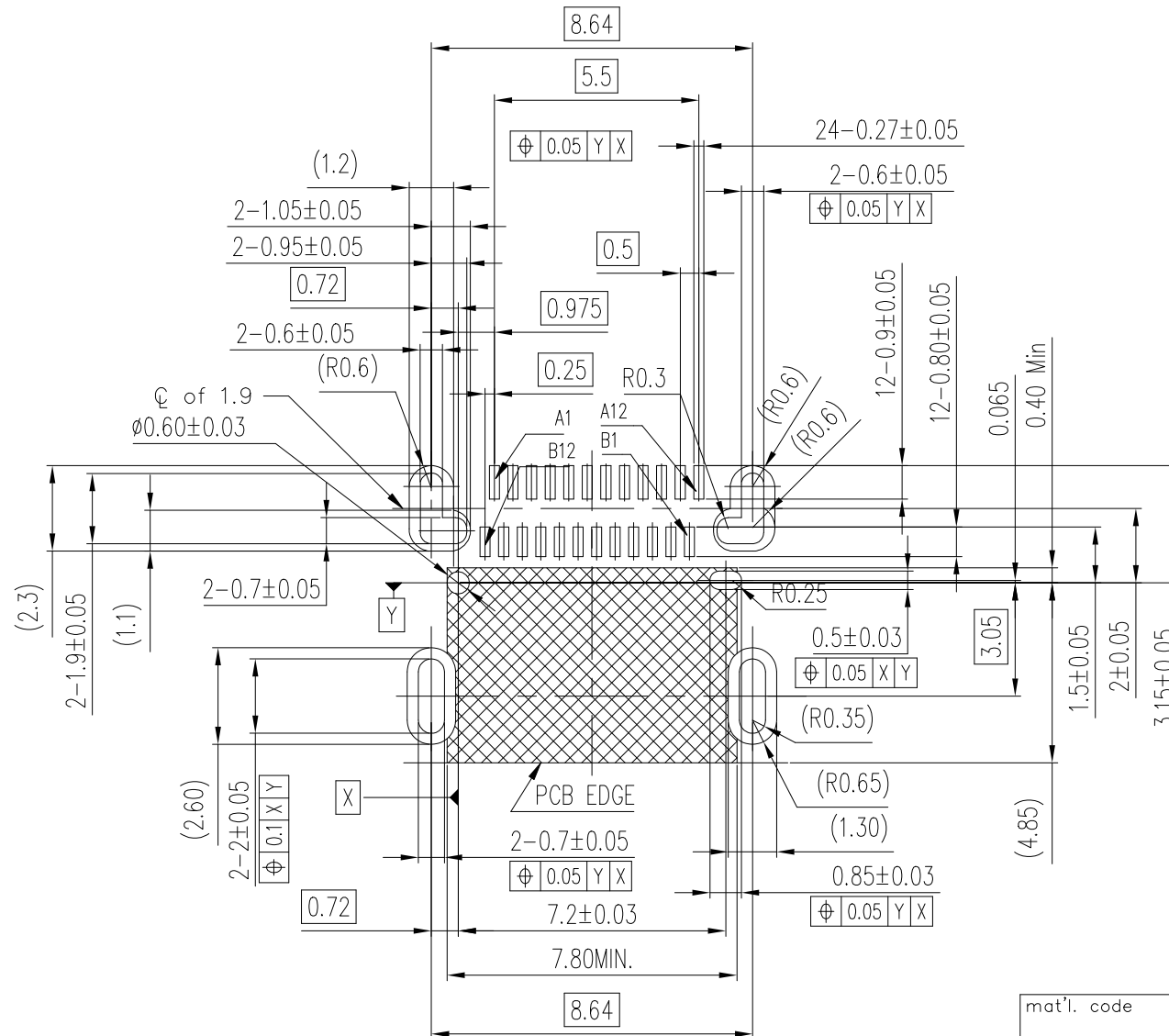
CONTACT PLATING

1. GOLD FLASH

2. 30u" Au

PACKAGING


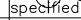
1. TAPE AND REEL

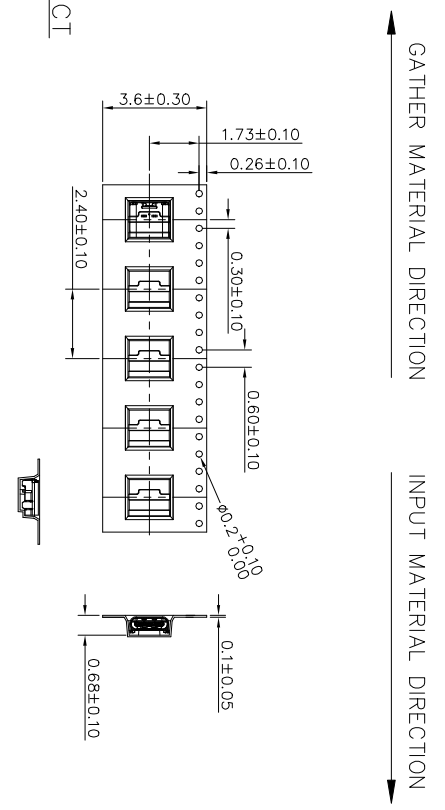
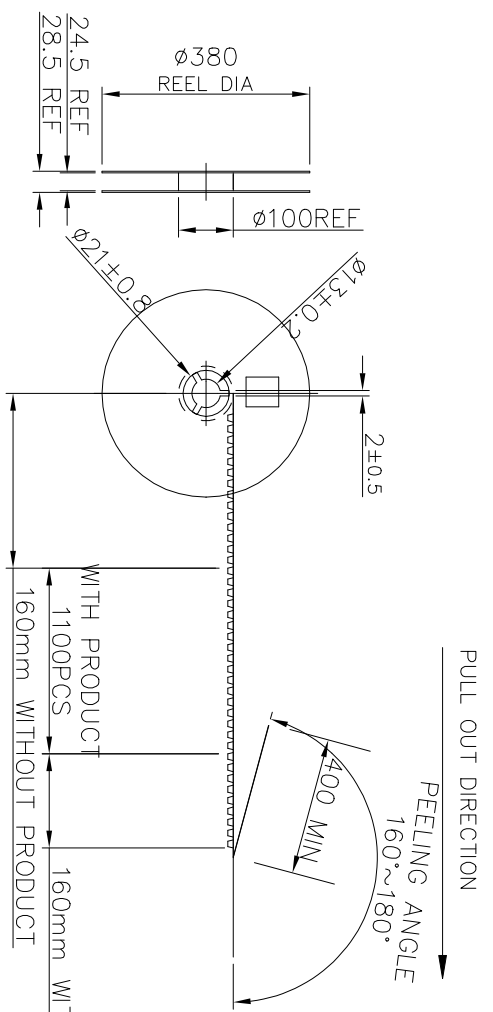


RECOMMENDED PCB LAYOUT

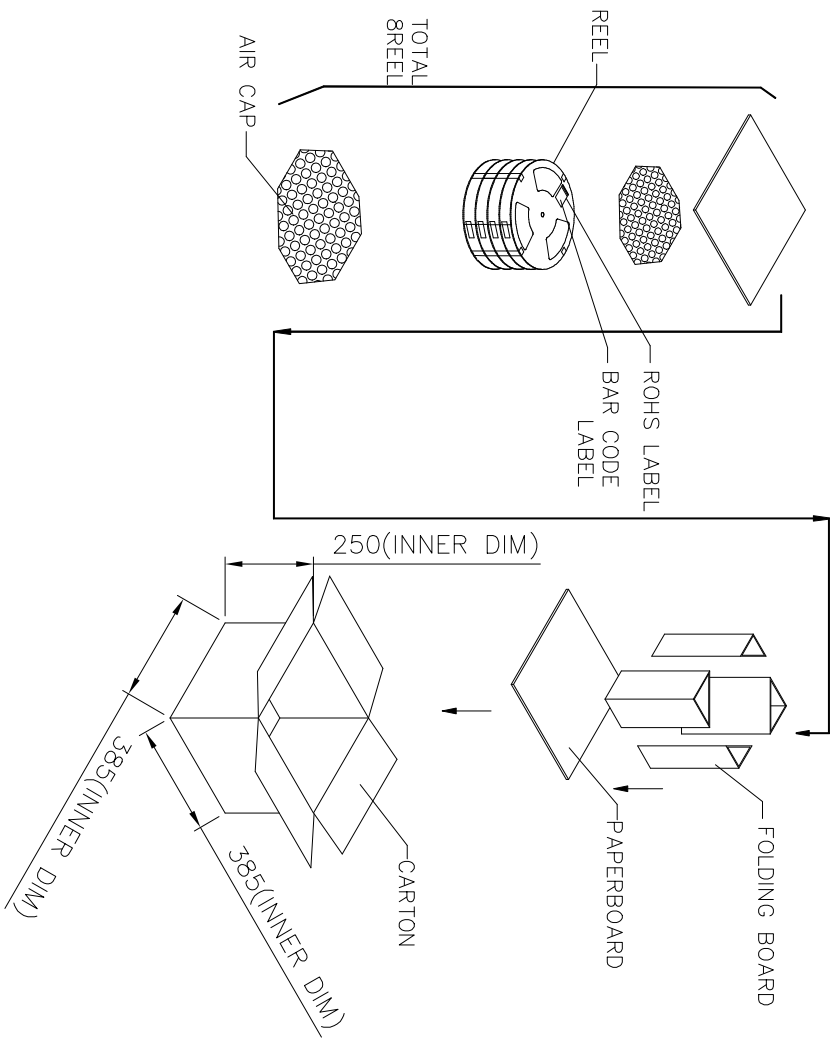
1. TOP VIEW, PCB TOLERANCE: ±0.05

2. KEEP AREA CLEAR OF COMPONENTS, VIAS
AND ROUTING.

mat'l. code				surface ISO 1302 ✓		tolerance ISO 406 ISO 1101		projection 		product family HPL 511									
ltr	ecn no	dr	date	tolerances unless otherwise specified						title									
D				angles		linear		mm		USB 3.1 GEN2 Type C RECEPT. R/A SMT AND DIP TAILS									
				0°±3'				scale 1:1											
				dr	KENNY TAI		2015-09-21		dwg no		sheet2 of 3				size				
				engf	Yuan-Yuan Bao		2021-03-02		10137065		A3								
				chr	Li-Qing Lei		2021-03-02												
				appd	Tim Yoo		2021-03-02		type		Product		Customer		Drawing				
sheet index		revision sheet																	



REEL WIDTH



NOTES : (FOR REEL)
PRODUCT MUST MEET CONTROLLED SUBSTANCES SPEC. ROHS 2.0
PACKAGING MATERIAL IN PLASTIC, RUBBER, INK, PIGMENT AND PAINT
MUST MEET CONTROLLED SUBSTANCES SPEC PER 230-702.
* CADMIUM AND CADMIUM COMPOUNDS NOT TO EXCEED: 5 PPM.
* LEAD, CADMIUM, CHROM VI AND MERCURY NOT TO EXCEED: 100 PPM (COMBINED).
* CARRIER TAPES, COVER TAPES, REELS AND TAPED COMPONENTS MUST MEET THE REQUIREMENTS DEFINED PER EIA-481-B.
1. MATERIAL :
COVER TAPE : ANTISTATIC P.S T=0.05±0.01 , COLOR: CLEAR
CARRIER TAPE : ANTISTATIC P.S T=0.40mm ±0.05 , COLOR: BLACK
REEL : PS UL94V-0
SHIPPING BOX: CORRUGATED FIBER
2. DIMENSION :
REEL : SEE DRAWING
BOX : SEE DRAWING
3. QUANTITY : SEE TABLE
4. WEIGHT : SEE TABLE
5. PEELING RESISTANCE : 10gf~130gf (for 12~56mm)
6. PEELING SPEED : 300mm/MINUTES

PCS/ REEL	REEL/ BOX	PCS/ BOX	PART NUMBER
1100	8	8800	10137065-00XXXLF

mat'l. code	surface	tolerance	projection	product family
ISO 1302	ISO 406	ISO 1101	HP L 511	
tolerances unless otherwise specified	tolerances unless otherwise specified	tolerances unless otherwise specified	tolerances unless otherwise specified	
angles	linear	mm	mm	
0±3°	±0.3	scale 1:1		
dr	KENNY TAI	2015-09-21	dwg no	sheet 3 of 3 size
eng	Yuan-Yuan Bao	2021-03-02	10137065	A3
chr	Li-Qing Lei	2021-03-02		
appd	Tim Yoo	2021-03-02	type	Product Customer Drawing
sheet index	revision			