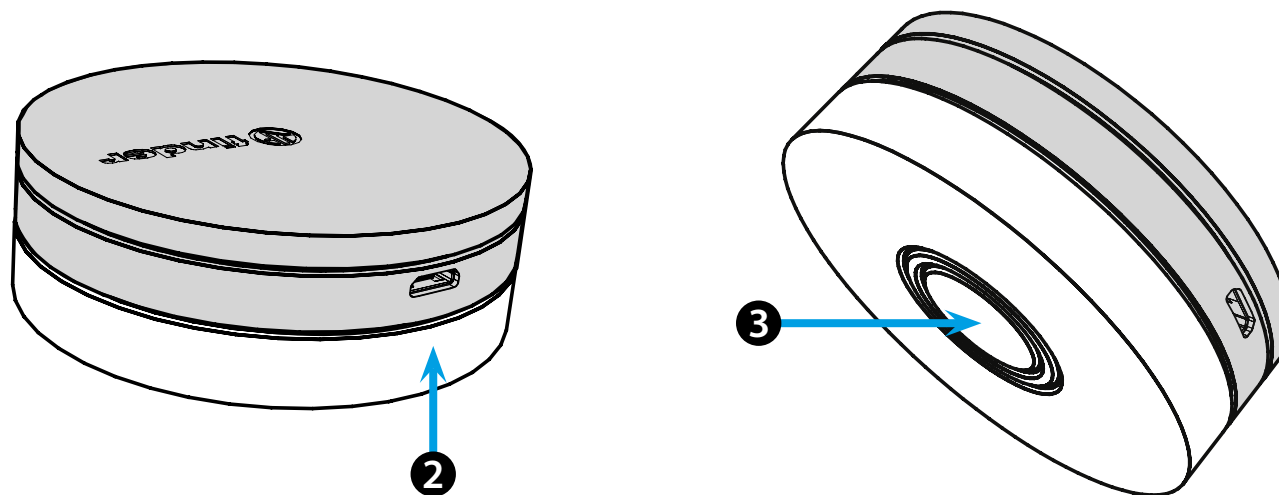
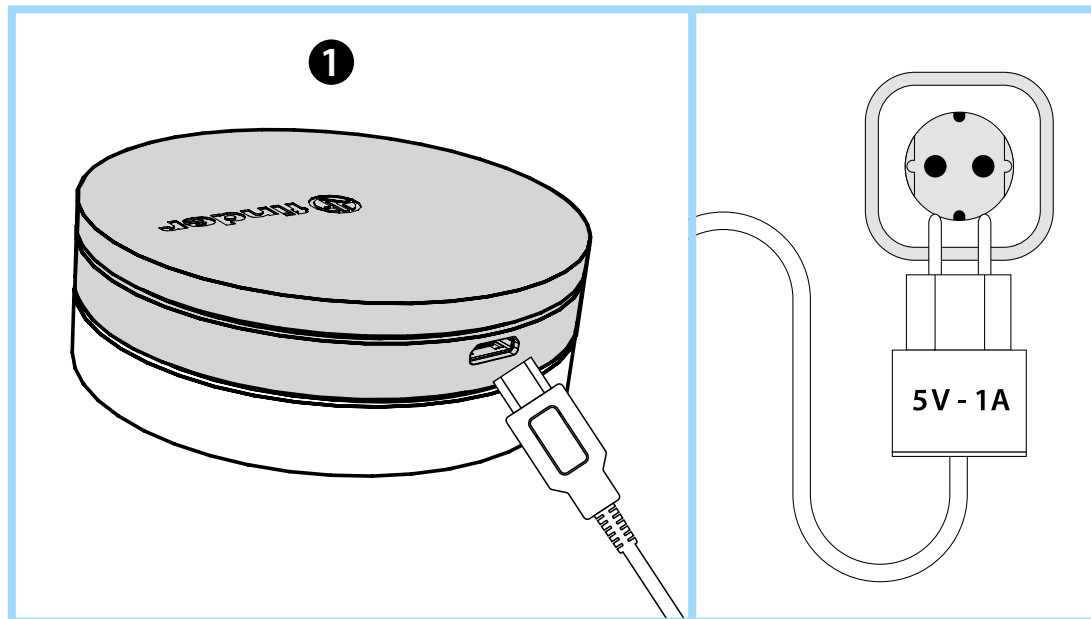




1Y.GU.005



## ENGLISH

### 1Y.GU.005 GATEWAY YESLY Wi-Fi 2.4 GHz

#### 1 INSTALLATION

Connect the Micro USB connector to the Gateway and the power supply to the electrical outlet.  
After switching on, the Gateway's luminous base will flash with a fading white light, awaiting configuration.  
Use the Finder YESLY APP for Gateway configuration, **only after creating the Yesly system with the TOOLBOX App Finder**.  
For more information: [yesly.life/setup-gateway](https://yesly.life/setup-gateway)

#### 2 LUMINOUS BASE

##### WHITE LED

- **Flashing fading**: waiting for configuration
- **Fixed**: connection established with both the Wi-Fi network and the Cloud
- **2 flashes**: connected only to the Wi-Fi network - no connection to the Cloud (internet not active)
- **3 flashes**: no connection to the Wi-Fi network and no connection to the Cloud (internet not active)

##### BLUE LED

**Flashing**: sending Bluetooth commands to the devices

##### RED LED

**Fixed**: direct connection of the smartphone to GATEWAY (via WLAN with Yesly App)

#### 3 GATEWAY SETTING

To change the light intensity of the GATEWAY base:

- press the button once: Low brightness
- press the button twice: Medium-Low brightness
- press the button 3 times: Medium-High brightness
- press the button 4 times: High brightness

##### RESET

Press the button for > 10 seconds to reset the settings to factory

