

**VK208F25**
**CONNECTION TECHNOLOGY • CABLE SOCKETS / CONNECTORS PRE-ASSEMBLED ON TWO SIDES**

, 2m, M12 Male (plug) 4pin Straight, RJ45 Male (plug) 4pin Straight, 4x0.14mm<sup>2</sup>, PUR (Polyurethane) Green, Ø4.8mm, 50V, -30°C, TPU, Shielded, Suitable for trailing chain and torsion resistant, Oil and cooling lubricants, Welding area


**MECHANICAL FEATURES**

Ambient temperature	-30 °C ... 70 °C
Cable infeed of A connection	Straight
Cable infeed of B connection	Straight
Cable length	2 m
Cable sheath color	Green
Contact body material	Brass
Contact coating material	Gold
Housing material	TPU
Material of cable sheath	PUR (Polyurethane)
Max. tightening torque	2 Nm
Number of cores	4
Perm. ambient temperature of cable, fixed cable	-40 °C ... 80 °C
Seawater-resistant	+
Suitable for trailing chain	+
Version	Connection cable
Wire assembly	18 x 0.1mm
Wire cross section	0.14 mm <sup>2</sup>

**ELECTRICAL FEATURES**

Line diameter	4.8 mm
Number of pins of A connection	4
Number of pins of B connection	4
Rated current	2 A
Rated voltage	50 V
Shielded	+
Type of A electrical connection	M12
Type of B electrical connection	RJ45
Type of cable	Multi-core
Type of plug-in contact, A connection	Male (connector)
Type of plug-in contact, B connection	Male (plug)
With LED display	-

## OPTICAL FEATURES

Degree of soiling	2
-------------------	---

## OTHER FEATURES

Acid and alkali-resistant	+
Flame retardant	Yes
Free of LABS	+
Halogen-free	+
Hydrolysis-proof	+
IR-networked	-
Oil and cooling lubricants	+
Ozone and UV-resistant	+
Recyclable	+
Suitable for trailing chain and torsion resistant	+
Welding area	+

## Other

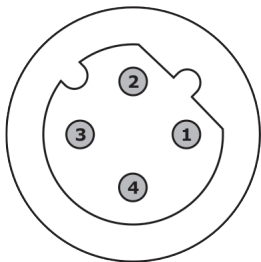
Packaging dimensions	200mm x 15.0mm x 325.0mm
Shipping weight	0.1kg
Tariff code	85444290

## Classification

ipf product group	851
eClass 8.0	27279218
eClass 9.0	27060311
eClass 9.1	27060311
ETIM-5.0	EC001855
ETIM-6.0	EC001855
ETIM-7.0	EC001855

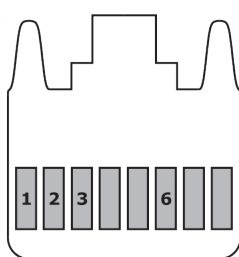
## Connection

male connection

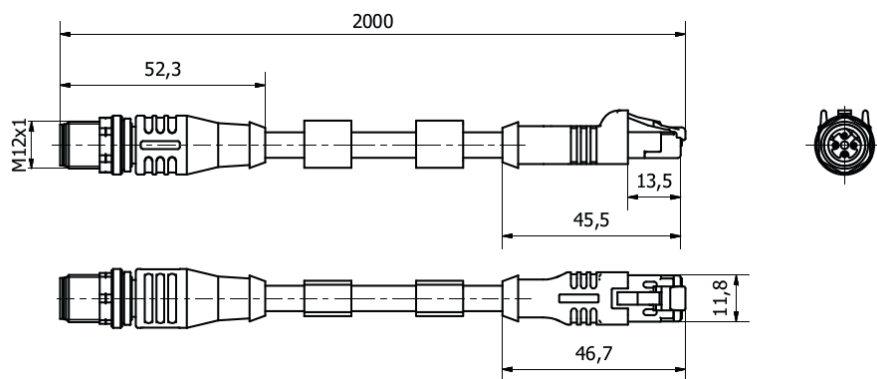


- 1 white/orange
- 2 white/blue
- 3 orange
- 4 blue

male connection



- 1 white/orange
- 2 orange
- 3 white/blue
- 6 blue

**Dimensional drawing****Installation**

Mounting / installation may only be carried out by a qualified electrician!

**Disposal****Safety warnings**

Before initial operation, please make sure to follow all safety instructions that may be provided in the product information.

Never use these devices in applications where the safety of a person depends on their functionality.

LED lighting systems can generate intensive UV radiation, which can damage your eyes in case of improper use. The manufacturer cannot be held responsible for damages that result from improper use or connection.