

**IB080206**
**INDUCTIVE SENSORS • INCREASED SWITCHING DISTANCE**

sensor inductive, M8x1 45long, Flush, Sn: 3, 10-30V DC, PNP NC, Cable 2m PVC, IP67, Nickel silver Chrome-plated


**MECHANICAL FEATURES**

Active area material of sensor	PBTP
Alignment of cable entry	Axial
Ambient temperature	-25 °C ... 70 °C
Cable infeed	Axial
Cable length	2 m
Degree of protection (IP)	IP67
Design	Cylinder, screw-thread
Housing coating	Chrome-plated
Housing material	Nickel silver
Material of cable sheath	PVC
Mechanical mounting condition for sensor	Flush
Number of cores	3
Pressure-proof	-
Sensor length	45 mm
Thread length	45 mm
Thread pitch	1 mm
Thread size, metric	8

**ELECTRICAL FEATURES**

Cascadable	-
Correction factor (aluminum)	0.3
Correction factor (brass)	0.41
Correction factor (copper)	0.27
Correction factor (St37)	1
Correction factor (stainl. steel)	0.72
Hysteresis	10 %
No-load current	10 mA
Norm measuring plate	9x9x1
Rated switching current	200 mA
Relative repeat accuracy	5 %
Reverse polarity protection	+
Short-circuit protection	+
Suitable for safety functions	-

## ELECTRICAL FEATURES

Supply voltage	10 V ... 30 V
Switching distance	3 mm
Switching frequency	1000 Hz
Type of electrical connection	Cable
Type of switching function	Normally closed contact
Type of switching output	PNP
Voltage drop	2 V
Voltage type	DC
With LED display	+
With monitoring function of downstream devices	-

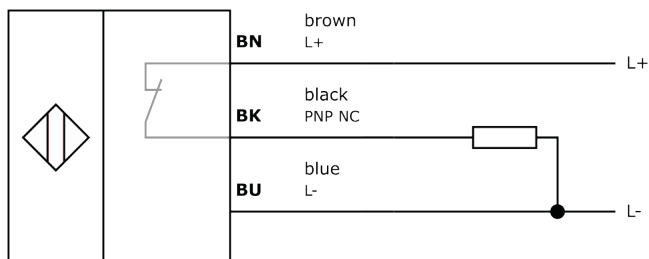
## Other

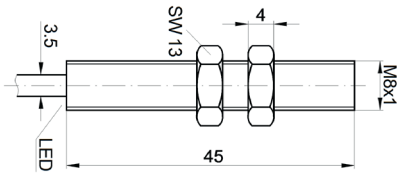
Packaging dimensions	100mm x 15.0mm x 120mm
Shipping weight	0.05kg
Tariff code	85365019

## Classification

ipf product group	201
eClass 8.0	27270101
eClass 9.0	27270101
eClass 9.1	27270101
ETIM-5.0	EC002714
ETIM-6.0	EC002714
ETIM-7.0	EC002714

## Connection



**Dimensional drawing****Installation**

Mounting / installation may only be carried out by a qualified electrician!

**Disposal****Safety warnings**

Before initial operation, please make sure to follow all safety instructions that may be provided in the product information.

Never use these devices in applications where the safety of a person depends on their functionality.

LED lighting systems can generate intensive UV radiation, which can damage your eyes in case of improper use. The manufacturer cannot be held responsible for damages that result from improper use or connection.