

## At your service in the field of fastening technology

The company headquartered in Zug, Switzerland, is among the market leaders in fastening technology in Europe, the Americas and Asia-Pacific. Bossard is a global network of companies with **2'500 employees in 77 locations** and carefully selected international partners in all regions of the world.

Our drive for excellence and innovation has led to steady growth and market success for more than 185 years.

### The core competences are:



[Product Solutions](#) – the full range of fastening products such as screws, nuts, bolts, woodscrews, washers, pins and much more.



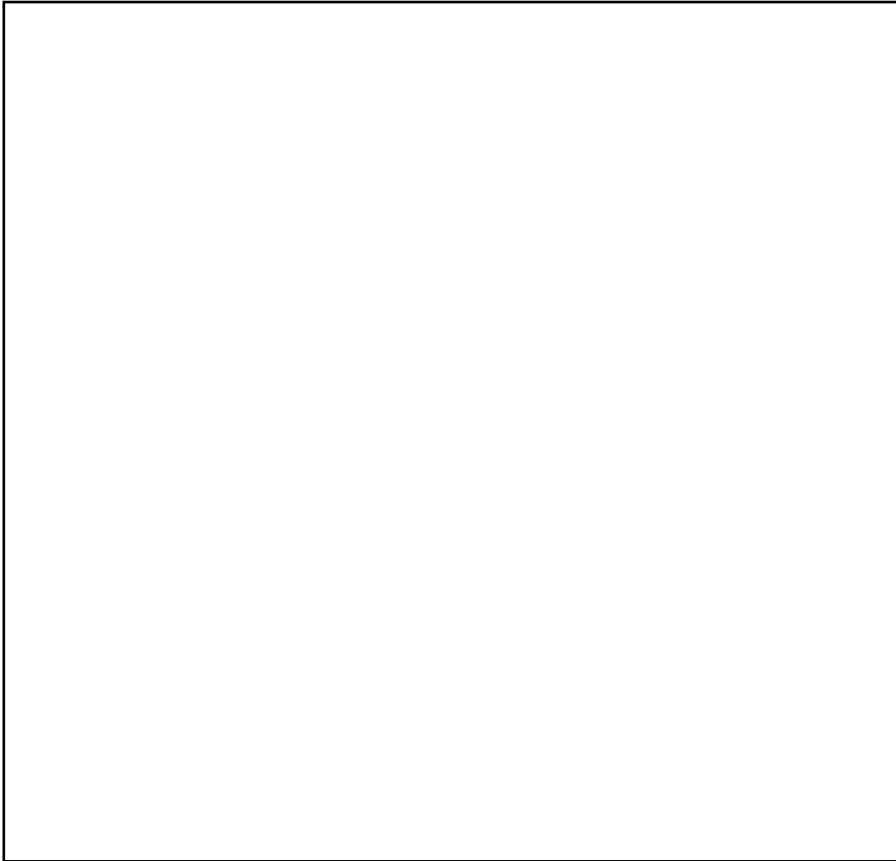
[Assembly Technology Expert](#) and consulting services to optimize your production and assembly processes



[Smart Factory Logistics](#) solutions to free you from C-parts management

**BN 27 1032771 hexagon socket set screw M6x22**

Hex socket set screws with cup point (ISO 4029; DIN 916), 45 H, black

**3D View****Zoom**

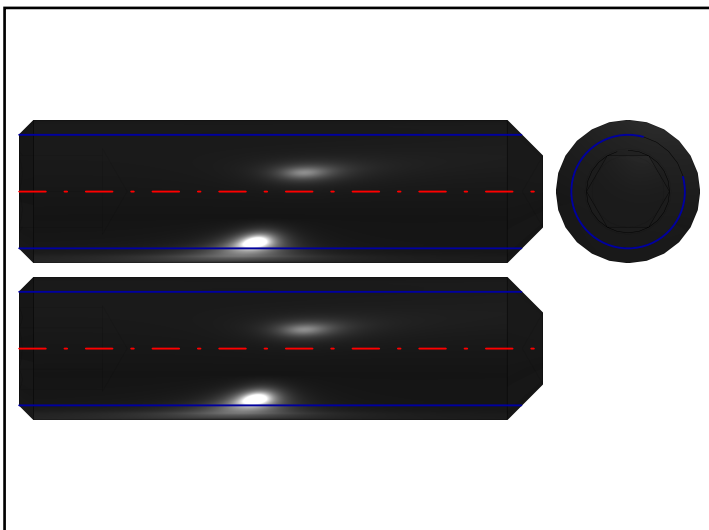
Moves you toward or away from objects in the scene when you drag vertically. You can also zoom with the hand tool by holding down Shift as you drag.

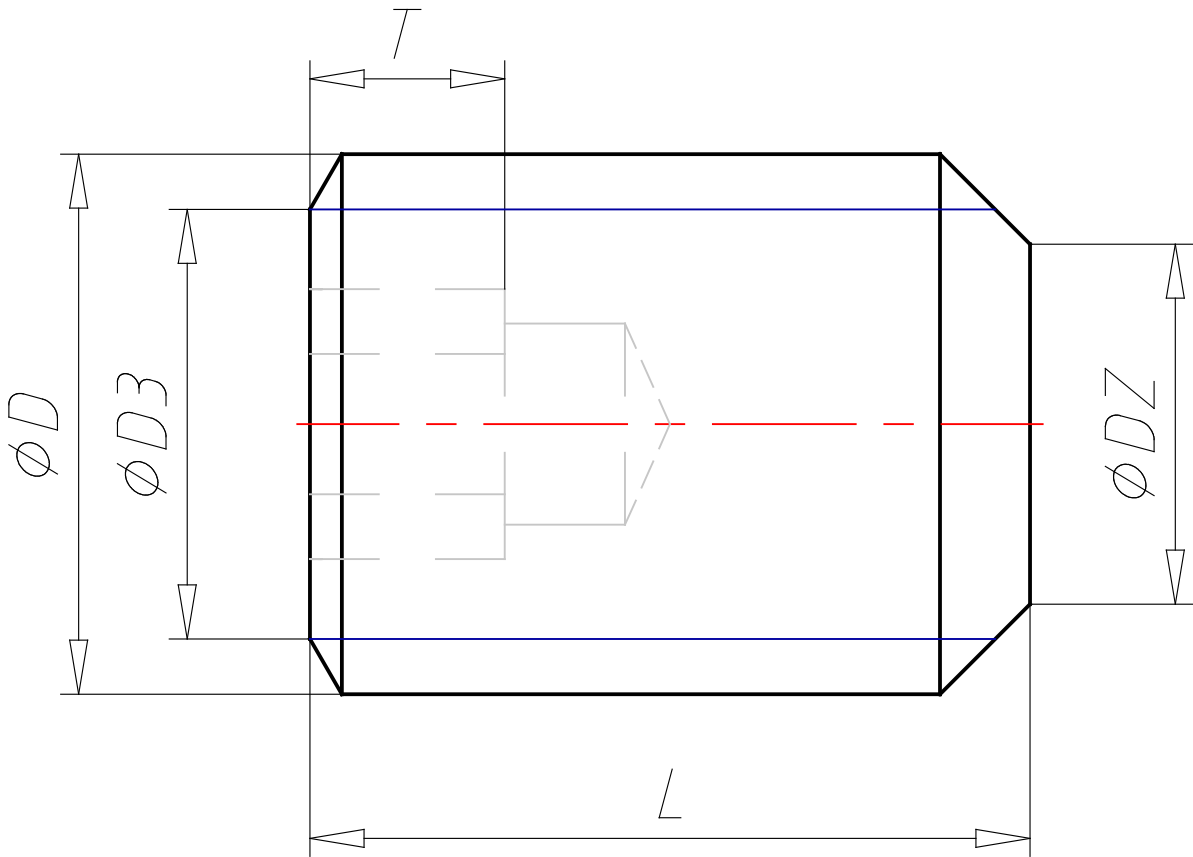
**Pan**


Moves the model vertically and horizontally only. You can also pan with the hand tool: Ctrl-drag.

**Rotate**

Turns 3D objects around relative to the screen. How the objects move depends on the starting view, where you start dragging and the direction in which you drag.

**2D derivation****ISO View**



BN 27 1032771 hexagon socket set screw M6x22						
Hex socket set screws with cup point (ISO 4029; DIN 916), 45 H, black						
Version Index		Modification Aenderung		Date Datum	Changed Geändert	
Comment Bemerkung —						
Specifications and reference standards Technische Lieferbedingungen und Bezugsnormen			Material Werkstoff			
—			—			
Tolerances Toleranzen			Surface Oberflaeche			
—			—			
Substitute for Ersatz fuer —			Title Benennung		BOSSARD	
Replaced by Ersetzt durch —						
Drawn Gezeichnet — —						
Checked Geprüft — —			Drawing no. Zeichnungs-Nr.		Dimensions Dimensionen mm	
Approved Freigabe — —					Revision Index —	Scale Massstab %

© For this drawing we reserve all rights. Without our permission it may neither be copied nor made accessible to third persons.

© Diese Zeichnung darf ohne unsere schriftliche Genehmigung weder vervielfältigt noch Dritten Personen zugänglich gemacht werden.

**BN 27 1032771 hexagon socket set screw M6x22**

Hex socket set screws with cup point (ISO 4029; DIN 916), 45 H, black

**Technical Data**

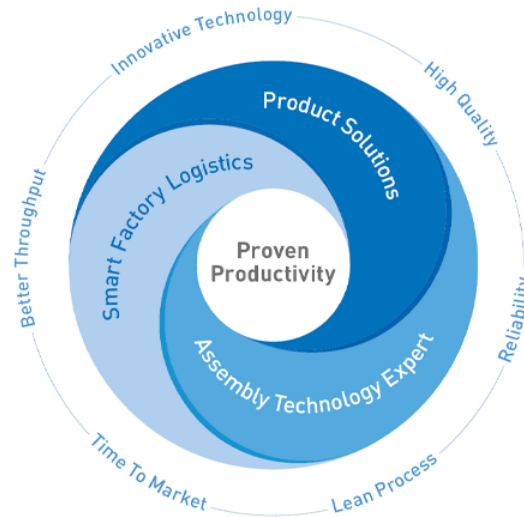
BNARTNR (Identification)	1032771
BNNORM1 ()	ISO 4029
BNNORM2 ()	DIN 916
BNMAT (Material)	Steel 45 H
BNSURFACE (Surface)	black
D (Nominal thread diameter / mm)	6
D3 (Thread core diameter / mm)	4.773
P (Threaded pitch / mm)	1
L (Nominal length / mm)	22
S (Width across flats / mm)	3
DZ (Diameter of the cup point max. / mm)	3
T (Depth of the driving feature min. / mm)	3.5
VV ()	1

**BN 27 1032771 hexagon socket set screw M6x22**

Hex socket set screws with cup point (ISO 4029; DIN 916), 45 H, black

**Bill of Materials**

N°	Description	Amount
1.1	BN 27 1032771 hexagon socket set screw M6x22	1



From the perspective of our customers, the interplay has six core benefits within the perspectives of [Product Solutions](#), [Assembly Technology Expert](#) and [Smart Factory Logistics](#):

1. Time to market:

This means that our customers' products are brought to market faster – a crucial competitive advantage in a global environment where speed counts.

2. Lean process:

For our customers, this means saving time, money and resources, being able to better calculate total costs – and above all, achieving higher margins.

3. Better throughput:

This is one of the central cost aspects for our customers when it comes to boosting effectiveness – and especially improving efficiency.

4. High quality:

For our customers, this means absolute reliability in terms of product, process and production safety – and hence, less waste and fewer complaints.

5. Innovative technology:

From a customer's perspective this is crucial. Only companies open to new developments are ready to successfully forge new paths and go where no other competitor has gone before.

6. Maximum reliability:

For our loyal customers, this means knowing that they can rely on us and our long-time employees with the utmost confidence – not just now, but decades down the line.