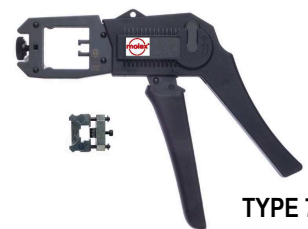


MANUAL HAND TOOL

molex

Application Tooling Specification Sheet



TYPE 7

Order No. 69008-1124

FEATURES

- A full cycle ratcheting hand tool ensures complete terminations
- This tool is intended for prototype, low volume, and field repair applications
- Tool is equipped with 8-loaded-8 die set but 6-loaded-6, 6-loaded-4, and 4-loaded-4 are available

SCOPE

Products: 90075 Modular Plug, FCC 68, 8/8 Circuit, Short Body

| Connector Series No. | Connector Order No. | | Wire Size | Jacket Strip Length |
|--|---------------------|--------------|-------------------|-------------------------------------|
| 90075 | 90075-0141 | 90075-0132 | 30AWG (7 x 38AWG) | 12.5mm – 13.5mm (0.49 – 0.53 in) |
| | ▶ 90075-0139 | ▶ 90075-0130 | | |
| ▶ For strip mounted connector : The customer must cut from strip a maximum 0.30mm (0.012") of the cut-off tab. | | | | |

OPERATION

1. Insert the stripped cable into the plug until the conductors stop at the end of the wire cavity.
2. Push the plug assembly into the termination nest of the tool until it stops.
3. Squeeze the tool handles together until the full cycle ratchet releases. If the handles become jammed, see "Missed terminations or Jams" section on page 2.
4. Release the tool handles and let the tool open completely.
5. Remove the terminated plug from the nest.

TERMINATION CONDITIONS

After termination, inspect the termination height dimensions and strain reliefs for latching. See Figure 1.

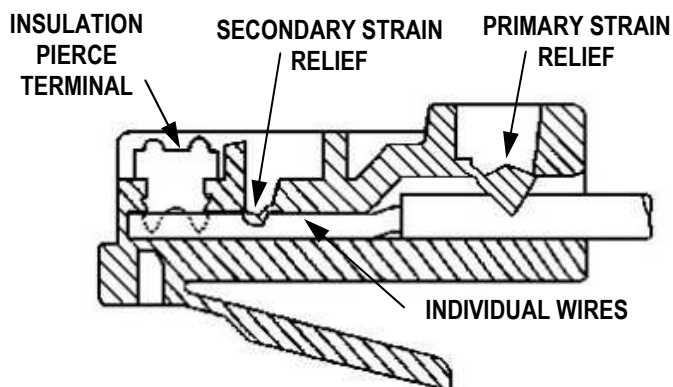
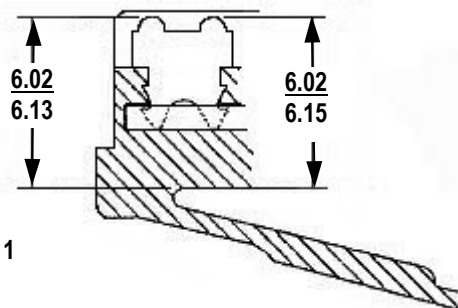


Figure 1



Maintenance

It is recommended that each operator of the tool be made aware of, and responsible for, the following maintenance steps:

1. Disassemble the metal tool frame by removing the screws and pulling off the plastic handle. Remove dust, moisture, and other contaminants with a clean brush, or soft, lint free cloth.
2. Do not use any abrasive materials that could damage the tool.
3. Make certain all pins; pivot points and bearing surfaces are protected with a thin coat of high quality machine oil. Do not oil excessively. Light oil used at the pivot points every 5,000 terminations will significantly enhance the tool life.
4. Wipe excess oil from hand tool, particularly from termination area.

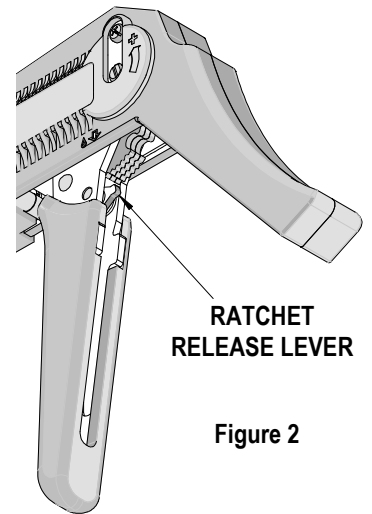


Figure 2

Missed terminations or Jams

Should this tool ever become stuck or jammed in a partially closed position, **DO NOT** force the handles open or closed. The tool will open easily by pressing the ratchet release lever up. See Figure 2.

How to Adjust Tool Preload

It may be necessary over the life of the tool to adjust tool handle preload force. Listed below are the steps required to adjust the force of the hand tool to obtain the proper termination conditions:

1. Remove the 2mm locking screw from the numbered adjusting wheel using a screw driver. See Figure 3.
2. Using the same screw driver turn the adjustment wheel to the next highest number.
Note: The odd numbers are in clockwise (CW) direction and the even numbers are counter clockwise (CCW).
3. Example: If the preload is set at number 5, then to increase the preload, turn the adjustment wheel until the 6th position is located over the 2mm locking screw tapped hole. If it is necessary to move to the 7th position, then the adjustment wheel should be turned clockwise (CW) until the 7th position is over the 2mm locking screw tapped hole.
4. Replace the 2mm locking screw, aligning the nearest notch in the setting wheel to locking screw.
5. Check the termination specifications after the tool handle preload force is adjusted. Repeat these steps until the desired result is obtained.

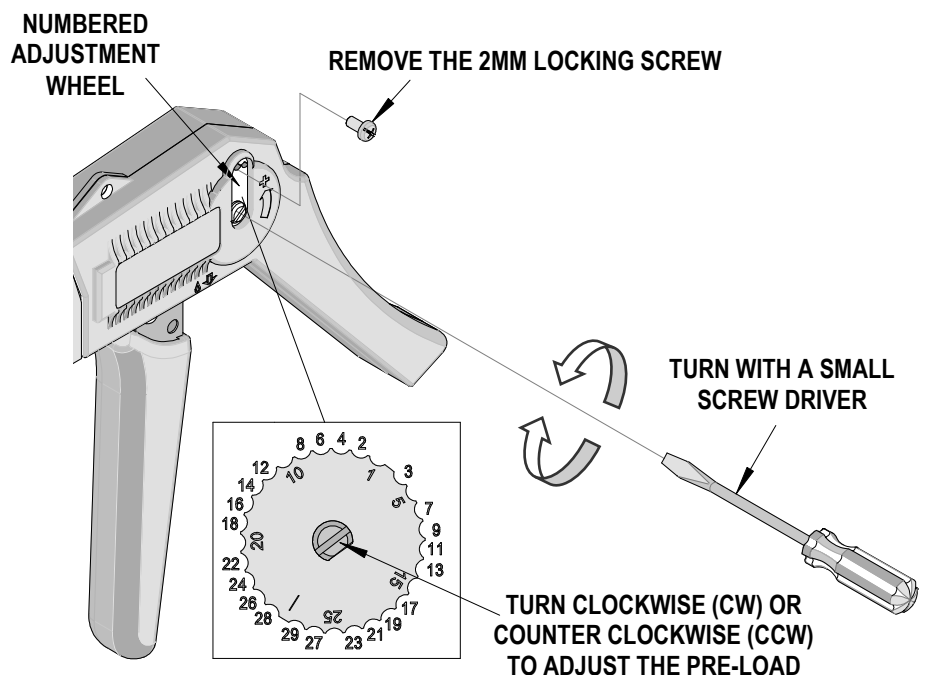


Figure 3

Warranty

This tool is for electrical termination purposes only. All tools are warranted to be free of manufacturing defects for a period of 30 days. Should such a defect occur, we will repair or exchange the tool free of charge. This repair or exchange will not be applicable to altered, misused, or damaged tools. This tool is designed for hand use only. Any clamping, fixturing, or use of handle extensions voids this warranty.

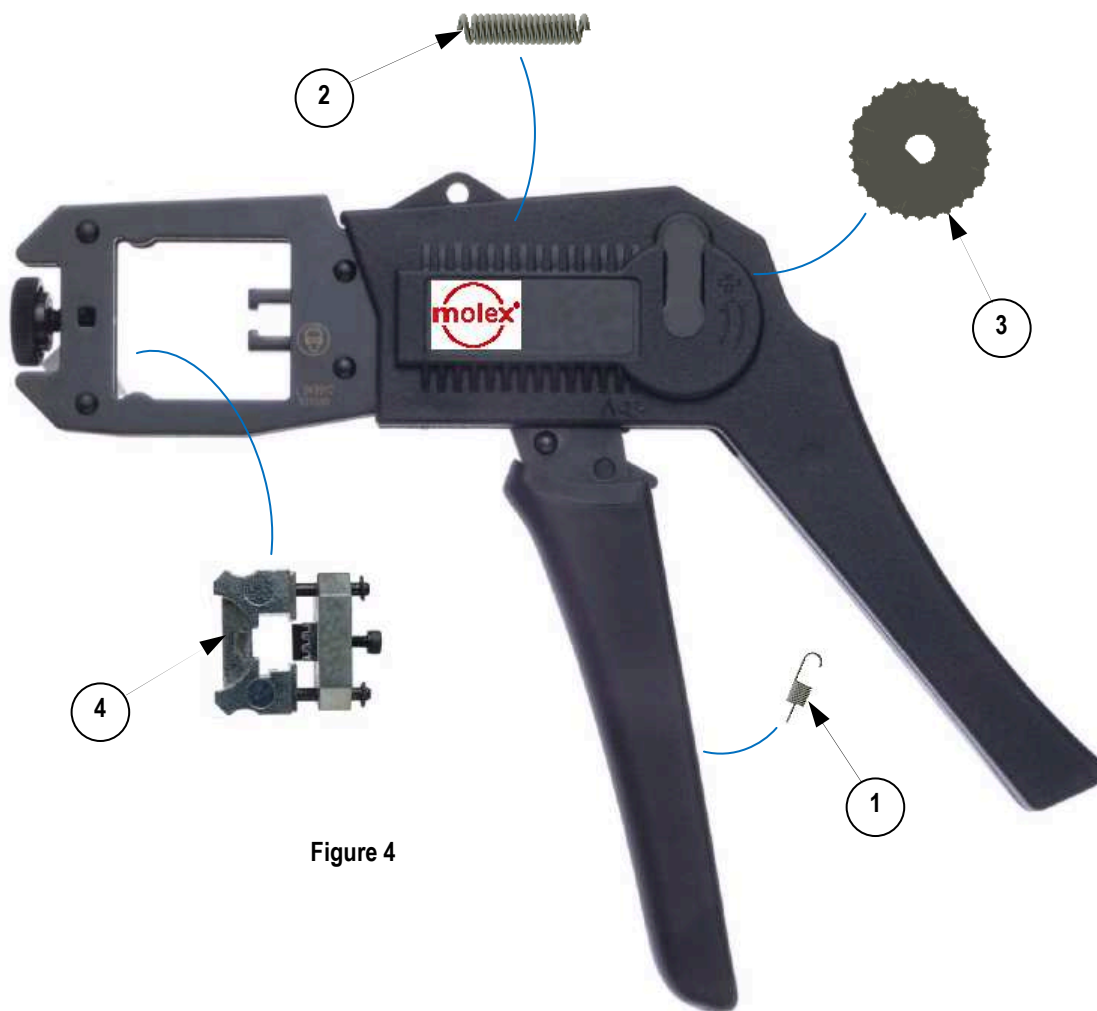
CAUTION: Molex termination specifications are valid only when used with Molex connectors and tooling.

CAUTIONS:

1. Manually powered hand tools are intended for low volume, prototyping, or field repair. This tool is **NOT** intended for production use. Repetitive use of this tool should be avoided.
2. Plastic handles are not protection against electrical shock.
3. Wear eye protection at all times.
4. Use only the Molex connectors specified for this tool.

PARTS LIST

| Item Number | Order Number | Description | Quantity |
|-------------|-------------------|-------------------------|-----------------|
| | 69008-1124 | Manual Hand Tool | Figure 3 |
| 1 | 11-11-0320 | Spring (Ratchet) | 1 |
| 2 | 63600-0479 | Spring (Main) | 1 |
| 3 | 69008-0972 | Adjuster Wheel | 1 |
| 4 | 69008-1129 | Die Set, 8-loaded-8 | 1 |
| REF | 69008-1127 | Die Set, 6-loaded-6 | optional |
| REF | 69008-1126 | Die Set, 6-loaded-4 | optional |
| REF | 69008-1125 | Die Set, 4-loaded-4 | optional |

**Figure 4**

<http://www.molex.com>