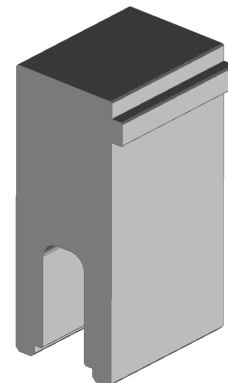




LPH Vertical Receptacle Press-In Tool Instruction Sheet Order No. 62201-8671



FEATURES

- Lip provided for positive alignment to connector assembly.
- Tool provides uniform distribution of press force across entire pin array.
- Used along with 62201-8672 to press in various LPH receptacle sizes.
- Use tool 62100-6300 for removing power terminals

SCOPE

Products: LPH Vertical Receptacle Assemblies (46114 Series). See Product List below for specific order numbers.

Product List

The following is a partial list of the product order numbers and their specifications that this tool is designed to run. Updates to this list are available on www.molex.com.

Connector Order Number	Description
46114-2200	2 power by 20 signal with interlock and guide posts
46114-2201	2 power by 20 signal with interlock
46114-2240	2 power by 24 signal with interlock and guide posts
46114-2241	2 power by 24 signal with interlock
46114-2280	2 power by 28 signal with interlock and guide posts
46114-2281	2 power by 28 signal with interlock
46114-2400	2 power by 40 signal with interlock and guide posts
46114-2401	2 power by 40 signal with interlock
46114-4200	4 power by 20 signal with interlock and guide posts
46114-4201	4 power by 20 signal with interlock
46114-4240	4 power by 24 signal with interlock and guide posts
46114-4241	4 power by 24 signal with interlock
46114-4280	4 power by 28 signal with interlock and guide posts
46114-4281	4 power by 28 signal with interlock
46114-4400	4 power by 40 signal with interlock and guide posts
46114-4401	4 power by 40 signal with interlock
46114-6200	6 power by 20 signal with interlock and guide posts
46114-6201	6 power by 20 signal with interlock
46114-6240	6 power by 24 signal with interlock and guide posts
46114-6241	6 power by 24 signal with interlock

Connector Order Number	Description
46114-6280	6 power by 28 signal with interlock and guide posts
46114-6281	6 power by 28 signal with interlock
46114-6400	6 power by 40 signal with interlock and guide posts
46114-6401	6 power by 40 signal with interlock
46114-8200	8 power by 20 signal with interlock and guide posts
46114-8201	8 power by 20 signal with interlock
46114-8240	8 power by 24 signal with interlock and guide posts
46114-8241	8 power by 24 signal with interlock
46114-8280	8 power by 28 signal with interlock and guide posts
46114-8281	8 power by 28 signal with interlock
46114-8400	8 power by 40 signal with interlock and guide posts
46114-8401	8power by 40 signal with interlock
46114-1020	10 power by 20 signal with interlock and guide posts
46114-1021	10 power by 20 signal with interlock
46114-1024	10 power by 24 signal with interlock and guide posts
46114-1025	10 power by 24 signal with interlock
46114-1028	10 power by 28 signal with interlock and guide posts
46114-1029	10 power by 28 signal with interlock
46114-1040	10 power by 40 signal with interlock and guide posts
46114-1041	10 power by 40 signal with interlock

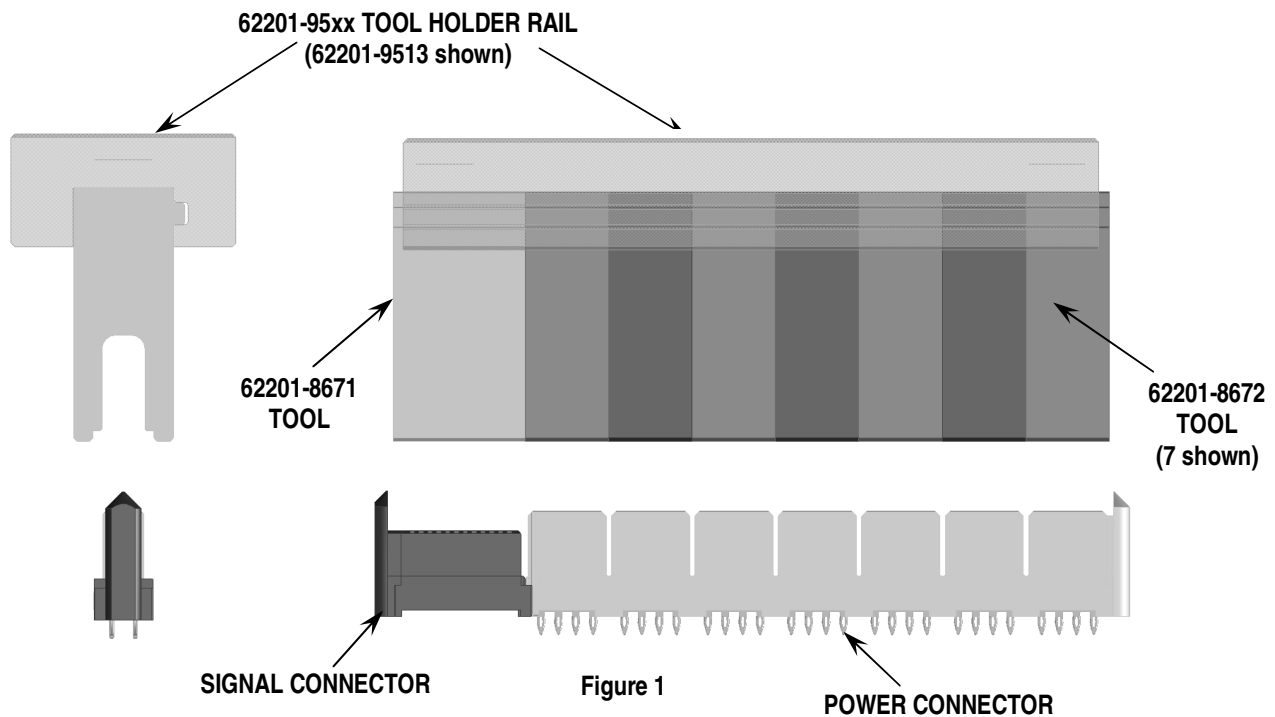
Connector Order Number	Description
46114-1220	12 power by 20 signal with interlock and guide posts
46114-1221	12 power by 20 signal with interlock
46114-1224	12 power by 24 signal with interlock and guide posts
46114-1225	12 power by 24 signal with interlock
46114-1228	12 power by 28 signal with interlock and guide posts
46114-1229	12 power by 28 signal with interlock
46114-1240	12 power by 40 signal with interlock and guide posts
46114-1241	12 power by 40 signal with interlock

Connector Order Number	Description
46114-1420	14 power by 20 signal with interlock and guide posts
46114-1421	14 power by 20 signal with interlock
46114-1424	14 power by 24 signal with interlock and guide posts
46114-1425	14 power by 24 signal with interlock
46114-1428	14 power by 28 signal with interlock and guide posts
46114-1429	14 power by 28 signal with interlock
46114-1440	14 power by 40 signal with interlock and guide posts
46114-1441	14 power by 40 signal with interlock

Note: Connector assemblies with 12, 16, 32, or 36 circuit signal require 62201-8672 tools only. See ATS-622018672 for details.

Tool Setup

The insertion tools are mounted in a 62201-95xx tool holder rail (ordered separately). See Figure 1.



Note that there is one 62201-8672 press-in tool for every two power positions (In figure 1, seven press-in tools for 14 powers). The signal modules require the following press-in tool quantities:

Signal Module Size	Number of 62201-8671 Press-In Tools
20	one
24	one
28	one
40	one, plus one 62201-8672

Note: For signal sizes 12, 16, 32 or 36 use press-in tool 62201-8672 (see ATS-622018672)

The 62201-8671 press-in tool is 19mm (0.75") wide; the 62201-8672 tool is 12mm (0.47") wide. Determine the total number of press-in tools needed and use the nearest length tool holder rail:

Tooling Holder Part Number	Tooling Holder Overall Length
62201-9501	24mm (0.94 in)
62201-9502	72mm (2.83 in)
62201-9503	156mm (6.14 in)
62201-9513	100mm (3.94 in)

Printed Circuit Board (PCB) Support

The LPH Vertical Receptacle connector requires significant force to press into the PCB. To prevent excessive PCB flexure and/or damage to the PCB, a support plate is strongly recommended directly beneath the connector hole pattern.

Due to the custom nature of every application, Molex does not offer any PCB support plate. The customer must furnish their own support plate.

When creating the PCB support plate, remember to allow clearance for the connector pins if they pass through the PCB thickness.

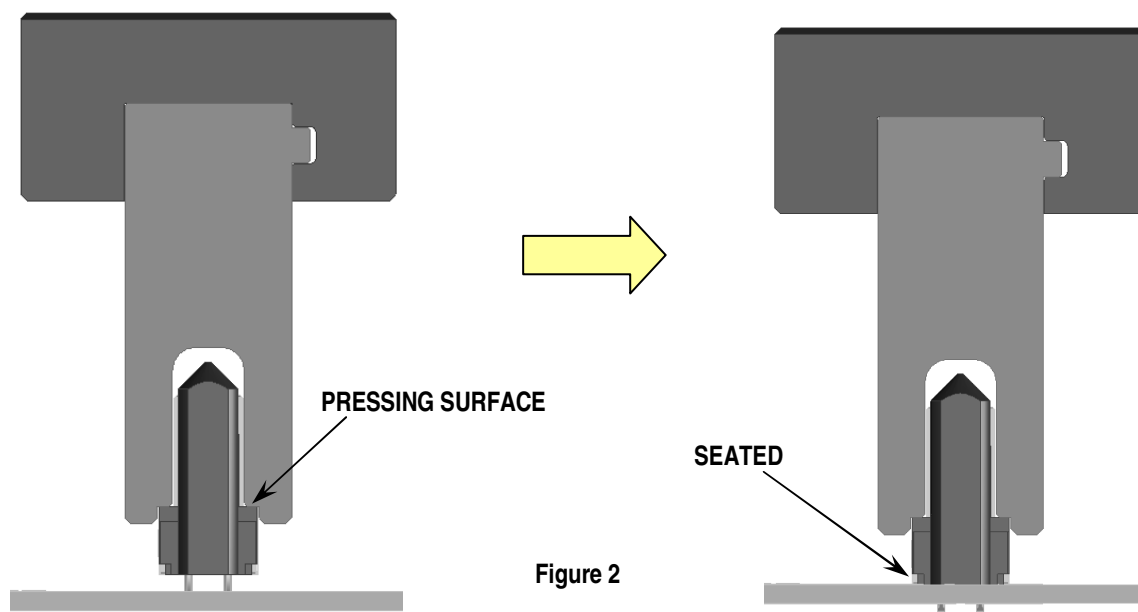
Press Equipment Recommendations

Many types of presses can be used to install connectors, but to assure consistent connector installation Molex recommends the following press criteria:

1. The capability to detect force variations as low as 4.5kg (10 lb) during the press-in cycle; excessive force measurements should stop the press-in cycle.
2. The rate of pressing can be regulated as low as 0.13mm (0.005in) per second.
3. Press stroke control to within 0.25mm (0.010in).
4. Total press stroke must be at least 19mm (0.75in).
5. For statistical purposes, automatic collection of force and distance data.

Tool Operation

1. Carefully insert, by hand, the connector into the PCB hole pattern.
2. Place the insertion tool on top of the connector. The two pressing surfaces of the tool should rest on the shoulders of the connector housing. See Figure 2.
3. Using the insertion tool and an appropriate press, seat the connector until the bottom of the plastic housing contacts the surface of the PCB.



CAUTION: To prevent injury, never operate any press without the guards in place. Refer to the press manufacturer's instruction manual.

CAUTION: Molex application tooling specifications are valid only when used with Molex connectors and tooling.

Contact Information

For more information on Molex application tooling please contact Molex at 1-800-786-6539.

Americas Headquarters
Lisle, Illinois 60532 U.S.A.
1-800-78MOLEX
amerinfo@molex.com

Far East North Headquarters
Yamato, Kanagawa, Japan
81-462-65-2324
feninfo@molex.com

Far East South Headquarters
Jurong, Singapore
65-6-268-6868
fesinfo@molex.com

European Headquarters
Munich, Germany
49-89-413092-0
eurinfo@molex.com

Corporate Headquarters
2222 Wellington Ct.
Lisle, IL 60532 U.S.A.
630-969-4550
Fax: 630-969-1352

Visit our Web site at <http://www.molex.com>