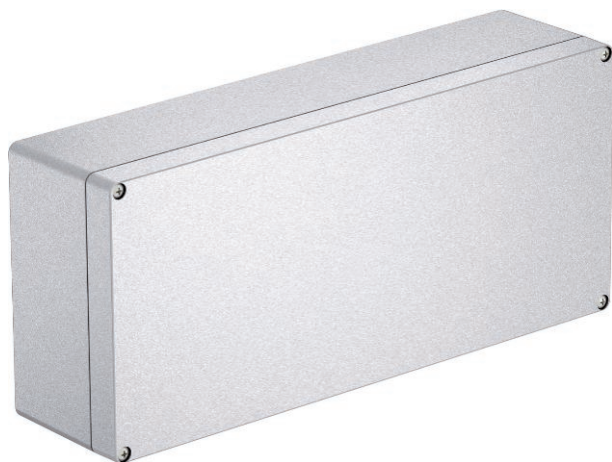


# Technical data sheet

## Aluminium empty housing Mx06-Mx15, paintable

Art.-Nr. 2011398



Robust aluminium empty housing for mechanical engineering and automation technology. The OBO Mx series' excellent features make it most suitable for extreme demands in all different areas. It is therefore also best suited for applications in industry, ports and shipbuilding, as well as in the agricultural sector. The series' properties protect the electrical installation when under extreme strain. The products withstand both great cold and heat as well as impacts or kicks on roads, railways or in tunnels. With a protection class of up to IP66, they are optimally protected against the intrusion of water. The aluminium is of course UV-resistant and halogen-free. The cover seal is made from polyurethane. The aluminium housings are sandblasted and are delivered with a cover including stainless steel screws, a seal and 2 or 4 earthing screws. The surface provides a good contact when using metal fittings.



**AIG** Die-cast aluminium  
**Cr3** Chrome III coating

Additional product text 1 | Temperature: -40°C to +125°C

### Master data

Item no.	2011398
Type	Mx 361609 CR3
Description 1	Aluminium empty housing
Description 2	surface can be coated
Dimension	360x160x91
Material	Die-cast aluminium
Material symbol	AIG
Surface	Chrome III coating
Surface symbol	Cr3
Smallest sales unit	1,00 Piece
Weight	320,00 kg/100 pc.

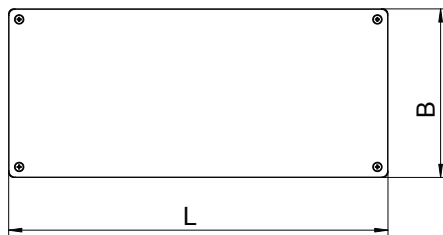
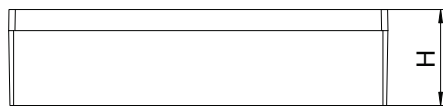
# Technical data sheet

## Aluminium empty housing Mx06-Mx15, paintable

Art.-Nr. 2011398



### Technical data



Length	360,00 mm
Width	160,00 mm
Height	91,00 mm
Clear internal dimensions	317,5x149x82 mm
Dimension	360x160x90 mm
Dimension LxWxH	360x160x91 mm
Extension option	<input checked="" type="checkbox"/>
Version	Closed with 4 stainless steel lid screws
Lid version	Closed
Cover fastening	Screwed
Shape	Rectangular
Suitable for outdoor use	<input checked="" type="checkbox"/>
Suitable for lightning protection	<input type="checkbox"/>
with lid	Yes
With cover	<input checked="" type="checkbox"/>
With mounting plate	<input type="checkbox"/>
Installation type	Wall/ceiling mounting
Protection rating	IP66
Protection rating	IP 66
max. permitted ambient temperature	-40,00 - 125,00 °C
Weatherproof	<input checked="" type="checkbox"/>