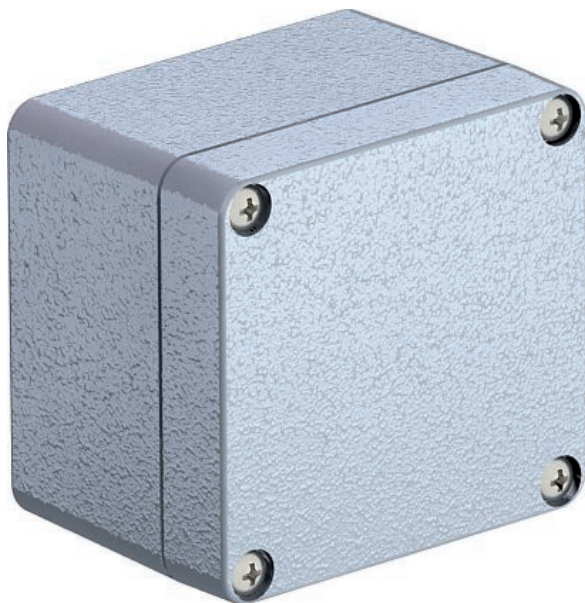


Technical data sheet

Aluminium empty housing Mx06-Mx15, powder-coated

Art.-Nr. 2011308



Robust aluminium empty housing for mechanical engineering and automation technology. The OBO Mx series' excellent mechanical and thermal features make it most suitable for extreme demands in many different areas. It is therefore also best suited for applications in industry, ports and shipbuilding, as well as in the agricultural sector.

The products protect the electrical installation against high-grade strains. They withstand both extreme cold and heat as well as vandalism and impact on roads, railways or in tunnels. With an IP66 protection class, they are optimally protected against the intrusion of dust and water. The aluminium housings are plastic coated (RAL 7035) and are delivered with a cover including stainless steel screws, a seal and two or four earthing screws.



AIG Die-cast aluminium
P Powder-coated

Additional product text 1 | Temperature: -40°C to +125°C

Master data

| | |
|---------------------|-------------------------|
| Item no. | 2011308 |
| Type | Mx 080705 SGR |
| Description 1 | Aluminium empty housing |
| Dimension | 80x75x57 |
| Colour | Silver grey |
| RAL number | 7001 |
| Material | Die-cast aluminium |
| Material symbol | AIG |
| Surface | Powder-coated |
| Surface symbol | P |
| Smallest sales unit | 1,00 Piece |
| Weight | 36,40 kg/100 pc. |

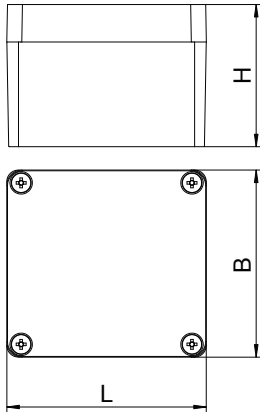
Technical data sheet

Aluminium empty housing Mx06-Mx15, powder-coated

Art.-Nr. 2011308



Technical data



| | |
|------------------------------------|--|
| Length | 80,00 mm |
| Width | 75,00 mm |
| Height | 57,00 mm |
| Clear internal dimensions | 71x65.6x52.5 mm |
| Dimension | 80x75x57 mm |
| Dimension LxWxH | 80x75x57 mm |
| Extension option | <input checked="" type="checkbox"/> |
| Version | Closed with 4 stainless steel lid screws |
| Lid version | Closed |
| Cover fastening | Screwed |
| Shape | Rectangular |
| Suitable for outdoor use | <input checked="" type="checkbox"/> |
| Suitable for lightning protection | <input type="checkbox"/> |
| with lid | Yes |
| With cover | <input checked="" type="checkbox"/> |
| With mounting plate | <input type="checkbox"/> |
| Installation type | Wall/ceiling mounting |
| Protection rating | IP66 |
| Protection rating | IP 66 |
| max. permitted ambient temperature | -40,00 - 125,00 °C |
| Weatherproof | <input checked="" type="checkbox"/> |