

BASIC INFORMATION

MODEL	BCL24-12
VOLTAGE	12V
CAPACITY	24Ah @ 20Hr
HOUSING MATERIALY	ABS (UL94:HB)
BATTERY TYPE	VRLA AGM
ELECTROLYTE	Does not require flooding

SPECIFICATION

MODEL	TERMINAL	POLARIZATION	DIMENSIONS				WEIGHT
			LENGTH	WIDTH	HEIGHT	WITH TERMINAL	
BCL24-12	M5	RIGHT +	181,5mm	77,0mm	170,0mm	170,0mm	6,5kg

ELECTRICAL SPECIFICATIONS

CAPACITY WHEN DISCHARGED UP TO 1,75V / CELL AT 25°C				RESISTANCE INSIDE	CHARGING VOLTAGE DURING CYCLE OPERATION	CHARGING CURRENT	
2h	5h	10h	20h	25°C	25°C	RECOMMENDED	MAXIMUM
18,0Ah	20,0Ah	22,6Ah	24,0Ah	20,0	14,70V - 14,90V	2,4A	4,8A

STORAGE

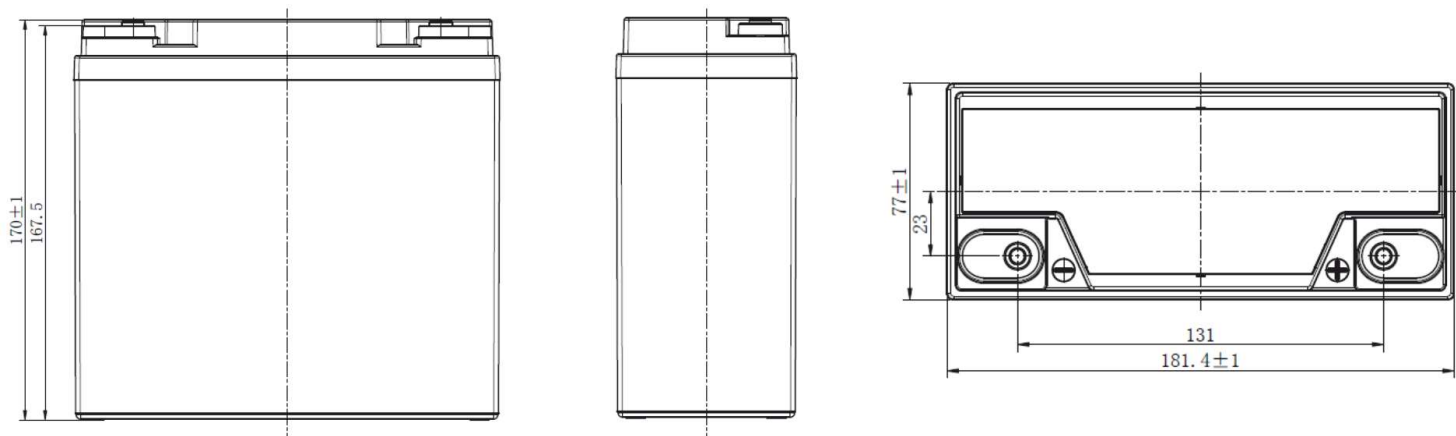
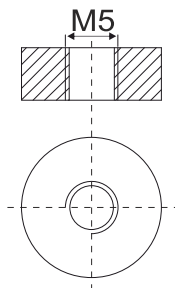
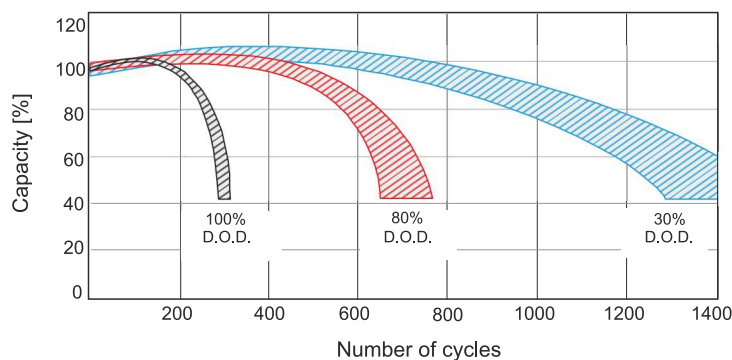
PERMISSIBLE AMBIENT TEMPERATURE			SELF-DISCHARGE AT 20°C		
STORAGE	CHARGE	DISCHARGE	3 MONTHS	6 MONTHS	12 MONTHS
-15°C to +40°C	0° to +40°C	-15°C to +50°C	6%	15%	37%

CHARGING STATUS

CHARGE PERCENTAGE	CELL	12 V
100	2,22	13,32
75	2,12	12,72
50	2,07	12,42
25	2,02	12,21
0	1,95	11,70

APPLICATIONS

- golf carts
- wheelchairs
- cleaning machines
- boats
- photovoltaic systems
- mobile devices
- devices powered by an electric motor
- devices with high cycle of work

DIMENSIONS**TERMINAL TYPE****M5****CYCLICAL LIFE****SAFETY****RECYKLING****ENVIRONMENT INFORMATION**

EXPLOITED BATTERIES ARE CONSIDERED AS HAZARDOUS WASTE. THESE WASTES DUE TO THEIR ORIGIN, CHEMICAL COMPOSITION (THEY CONTAINS HEAVY METALS LIKE LEAD AND OTHER TOXIC SUBSTANCES) AND OTHER FEATURES MAY BE DANGEROUS FOR ENVIRONMENT AND HUMAN OR ANIMAL HEALTH LIFE. ACCORDING TO THE WASTE ACT, WASTE IN THE FORM OF BATTERIES AND ACCUMULATORS SHOULD BE COLLECTED SEPARATELY FROM OTHER TYPES OF WASTE.

IN ORDER TO OBTAIN MORE DETAILED INFORMATION, WE ENCOURAGE YOU TO CONTACT US, WE PROVIDE ANY INFORMATION ON HOW TO HANDLE WITH WASTE BATTERIES AND ACCUMULATORS.