

L-Keys for Hexagon Socket Screws



<b>EAN:</b>	4013288111975	<b>Size:</b>	222x83x25 mm
<b>Part number:</b>	05022171001	<b>Weight:</b>	434 g
<b>Article number:</b>	950/9 Hex-Plus Imperial 1	<b>Country of origin:</b>	CZ
		<b>Customs tariff number:</b>	82041100

- L-keys for hexagonal socket screws
- Hex-Plus allows socket head screws to live longer
- BlackLaser for high corrosion protection and long service life
- L-keys are quickly to hand thanks to their size markings
- Wear-resistant clip material for enhanced durability

High quality L-key set for imperial hexagonal socket screws in a practical clip fastener out of wear-resistant material, enabling secure storage of the L-keys as well as simple removal. Hex-Plus profile: offers a larger contact surface within the screw head. This reduces the notching effects to a minimum and almost completely eliminates the risk of destroying the screw recess. The ball-end on the long arm allows for reliable working even in difficult installation situations. The BlackLaser surface treatment provides outstanding surface protection, even against corrosion, and a long service life. The tools are quickly to hand thanks to the laser-engraved and thereby wear-resistant size markings on the L-keys.

Web link

[https://products.wera.de/en/l-keys\\_l-keys\\_for\\_hexagon\\_socket\\_screws\\_950\\_9\\_hex-plus\\_imperial\\_1.html](https://products.wera.de/en/l-keys_l-keys_for_hexagon_socket_screws_950_9_hex-plus_imperial_1.html)

Wera - 950/9 Hex-Plus Imperial 1  
05022171001 - 4013288111975

Wera Werkzeuge GmbH  
Korzerter Straße 21-25  
D-42349 Wuppertal  
Tel: +49 (0)2 02 / 40 45-0  
E-Mail: [info@wera.de](mailto:info@wera.de)

## L-Keys for Hexagon Socket Screws

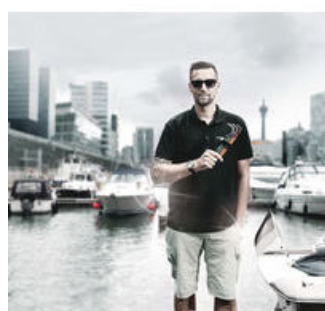
### Set contents:



#### 950 PKL inch

05022068001	1 x 5/64" x 100 mm
05022070001	1 x 3/32" x 112 mm
05022072001	1 x 1/8" x 126 mm
05022074001	1 x 5/32" x 140 mm
05022076001	1 x 3/16" x 160 mm
05022078001	1 x 7/32" x 180 mm
05022080001	1 x 1/4" x 190 mm
05022082001	1 x 5/16" x 200 mm
05022095001	1 x 3/8" x 212 mm

### L-Keys



We questioned the classic L-key design, since all too often the screw head recess is rounded out, meaning screws can no longer be tightened or loosened – and so the user finds the L-key slipping out of the recess. Wera Hex-Plus tools have a larger contact surface in the screw head. The notching effects are reduced and thereby the deformation of the screws. At the same time, as much as 20 % more torque can be applied.

### Hex-Plus



Hexagon screws can endure a problem because the contact surfaces delivering the power from the conventional tool, is transferred to the screw via very small surface areas. The consequence: the screw can become damaged (rounding out). Hex-Plus tools have a greater contact surface that prevents this from happening! At the same time, as much as 20 % more torque can be applied. Good to know: Hex-Plus tools fit into every standard hexagon socket screw!

### Ball tip



The spherical drive profile means that it is possible to swivel the axis of the tool to that of the screw, and therefore enable angled, "around-the-corner" screwdriving jobs.

### Size identification



The size of each L-keys has been engraved by a laser. In addition Take it easy L-keys have a colour coding according to sizes – for simple and rapid accessing of the required tool. Making it easy to find the right tool.

### Web link

[https://products.wera.de/en/l-keys\\_l-keys\\_for\\_hexagon\\_socket\\_screws\\_950\\_9\\_hex-plus\\_imperial\\_1.html](https://products.wera.de/en/l-keys_l-keys_for_hexagon_socket_screws_950_9_hex-plus_imperial_1.html)

Wera - 950/9 Hex-Plus Imperial 1  
05022171001 - 4013288111975

Wera Werkzeuge GmbH  
Korzerter Straße 21-25  
D-42349 Wuppertal  
Tel: +49 (0)2 02 / 40 45-0  
E-Mail: [info@wera.de](mailto:info@wera.de)

## L-Keys for Hexagon Socket Screws

### Surface protection



L-keys with BlackLaser surface treatment for outstanding surface protection and long service life. High corrosion protection.

### Secure hold and easy removal



The wear-resistant clip material ensures that the L-keys are securely held yet are easy to remove.

### Web link

[https://products.wera.de/en/l-keys\\_l-keys\\_for\\_hexagon\\_socket\\_screws\\_950\\_9\\_hex-plus\\_imperial\\_1.html](https://products.wera.de/en/l-keys_l-keys_for_hexagon_socket_screws_950_9_hex-plus_imperial_1.html)

Wera - 950/9 Hex-Plus Imperial 1  
05022171001 - 4013288111975

Wera Werkzeuge GmbH  
Korzerter Straße 21-25  
D-42349 Wuppertal  
Tel: +49 (0)2 02 / 40 45-0  
E-Mail: [info@wera.de](mailto:info@wera.de)