



EAN:	4013288210470	Size:	130x44x26 mm
Part number:	05004539001	Weight:	124 g
Article number:	8790 HMB Deep	Country of origin:	TW
		Customs tariff number:	82042000

- Long sockets for low-lying screwdriving, often even with protruding threaded rods in small spaces
- Hexagonal profile enables precise bolting with high power transmission and preserves the profile
- With Take it easy tool finder: colour coding by size
- Knurling at lower end to enable easy gripping when used in manual applications
- For manual and machine operation (non-impact), ball intercept ring

Long 3/8" hand and machine socket (ISO 2725 part 3) with ball intercept ring; for external hexagonal bolts and sockets. For use in manual and machine operation (non-impact), even with low-lying screwdriving and protruding threaded rods. With Take it easy tool finder with colour coding by size - for easy and fast location of the required tool. Easy to grasp even with oily hands. The hexagon profile allows the transmission of high forces and puts less strain on the edges of bolts or screw heads than a double hexagon profile. Fine-toothed ratchets also make the use of a double hexagon profile superfluous, even in confined spaces, thanks to their small back-pivoting angle.

Web link

https://products.wera.de/en/zyklop_ratchets_and_accessories_the_zyklop_ratchets_the_zyklop_ratchets_3_8_zyklop_accessories_3_8_8790_hmb_deep.html

Wera - 8790 HMB Deep
05004539001 - 4013288210470

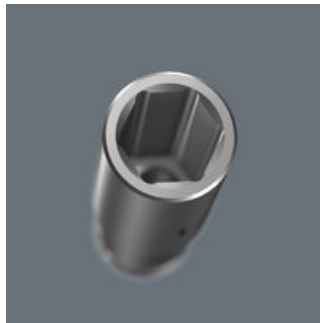
Wera Werkzeuge GmbH
Korzerter Straße 21-25
D-42349 Wuppertal
Tel: +49 (0)2 02 / 40 45-0
E-Mail: info@wera.de

Long design



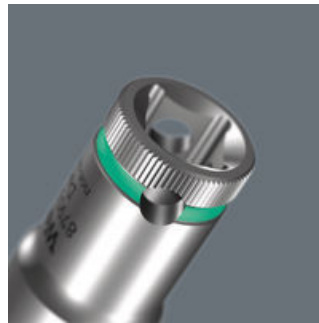
Due to the long design of the socket, screwdriving can also be achieved in small spaces. Fittings with protruding threaded rods are often also possible.

Profile-friendly power transmission



The hexagon profile allows the transmission of high forces and puts less strain on the edges of bolts or screw heads than a double hexagon profile. Fine-toothed ratchets also make the use of a double hexagon profile superfluous, even in confined spaces, thanks to their small back-pivoting angle.

Knurling



Knurling on lower end for more grip when used manually

Chrome vanadium steel



The chrome-vanadium steel version makes the plug-in tools suitable for heavy loads.

Take it easy tool finder system



Take it easy tool finder system - with profile and size colour-coding for quick and easy tool selection. Colour-coded system for hexagon drive screws (L-Keys, Zyklop bit sockets), external hex drive screws and nuts (Joker wrenches, Zyklop sockets and Zyklop bit sockets with holding function), and TORX® drive screws (L-Keys, Zyklop bit sockets).





Web link

https://products.wera.de/en/zyklop_ratchets_and_accessories_the_zyklop_ratchets_the_zyklop_ratchets_3_8_zyklop_accessories_3_8_8790_hmb_deep.html

Wera - 8790 HMB Deep
05004539001 - 4013288210470

Wera Werkzeuge GmbH
Korzerter Straße 21-25
D-42349 Wuppertal
Tel: +49 (0)2 02 / 40 45-0
E-Mail: info@wera.de

Further versions in this product family:

		 mm	 mm	 mm	 mm
05004530001	leuchtpink	8.0	64.0	12.2	17.0
05004531001	gruen	9.0	64.0	13.5	17.0
05004532001	leuchtgelb	10.0	64.0	14.5	17.0
05004533001	cyan	11.0	64.0	15.7	17.0
05004534001	schwarz	12.0	64.0	16.5	18.0
05004535001	tuerkis	13.0	64.0	19.0	17.0
05004536001	pink	14.0	64.0	20.0	18.0
05004537001	weiss	15.0	64.0	22.0	20.0
05004538001	violett	16.0	64.0	22.0	20.0
05004539001	rot	17.0	64.0	24.0	22.0
05004540001	leuchtgruen	18.0	64.0	26.0	23.0
05004541001	blau	19.0	64.0	26.0	23.0
05004542001	leuchtpink	20.0	64.0	28.0	25.0
05004543001	gruen	21.0	64.0	28.0	25.0
05004544001	gelb	22.0	64.0	30.0	26.0

Web link

https://products.wera.de/en/zyklop_ratchets_and_accessories_the_zyklop_ratchets_the_zyklop_ratchets_3_8_zyklop_accessories_3_8_8790_hmb_deep.html

Wera - 8790 HMB Deep
 05004539001 - 4013288210470

Wera Werkzeuge GmbH
 Korzter Straße 21-25
 D-42349 Wuppertal
 Tel: +49 (0)2 02 / 40 45-0
 E-Mail: info@wera.de