



EAN:	4013288210128	Size:	117x45x20 mm
Part number:	05004501001	Weight:	33 g
Article number:	8790 HMA Deep	Country of origin:	TW
		Customs tariff number:	82042000

- Long sockets for low-lying screwdriving, often even with protruding threaded rods in small spaces
- Hexagonal profile enables precise bolting with high power transmission and preserves the profile
- With Take it easy tool finder: colour coding by size
- Knurling on lower end for more grip when used manually
- For manual and machine operation (non-impact), ball intercept ring

Long 1/4" hand and machine socket (ISO 2725 part 3) with ball intercept ring; for external hexagonal bolts and sockets. For use in manual and machine operation (non-impact), even with low-lying screwdriving and protruding threaded rods. With Take it easy tool finder with colour coding by size - for easy and fast location of the required tool. Easy to grasp even with oily hands. The hexagon profile allows the transmission of high forces and puts less strain on the edges of bolts or screw heads than a double hexagon profile. Fine-toothed ratchets also make the use of a double hexagon profile superfluous, even in confined spaces, thanks to their small back-pivoting angle.

Web link

https://products.wera.de/en/zyklop_ratchets_and_accessories_the_zyklop_ratchets_the_zyklop_ratchets_1_4_zyklop_accessories_1_4_8790_hma_deep.html

Wera - 8790 HMA Deep
05004501001 - 4013288210128

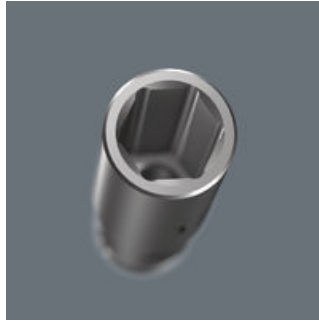
Wera Werkzeuge GmbH
Korzerter Straße 21-25
D-42349 Wuppertal
Tel: +49 (0)2 02 / 40 45-0
E-Mail: info@wera.de

Long design



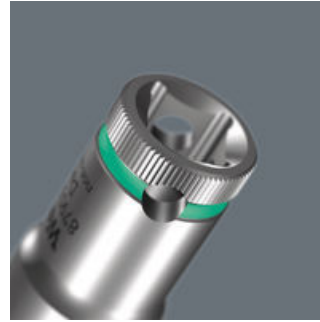
Due to the long design of the socket, screwdriving can also be achieved in small spaces. Fittings with protruding threaded rods are often also possible.

Profile-friendly power transmission



The hexagon profile allows the transmission of high forces and puts less strain on the edges of bolts or screw heads than a double hexagon profile. Fine-toothed ratchets also make the use of a double hexagon profile superfluous, even in confined spaces, thanks to their small back-pivoting angle.

Knurling



Knurling on lower end for more grip when used manually

Chrome vanadium steel



The chrome-vanadium steel version makes the plug-in tools suitable for heavy loads.

Take it easy tool finder system



Take it easy tool finder system - with profile and size colour-coding for quick and easy tool selection. Colour-coded system for hexagon drive screws (L-Keys, Zyklop bit sockets), external hex drive screws and nuts (Joker wrenches, Zyklop sockets and Zyklop bit sockets with holding function), and TORX® drive screws (L-Keys, Zyklop bit sockets).




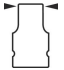

Web link

https://products.wera.de/en/zyklop_ratchets_and_accessories_the_zyklop_ratchets_the_zyklop_ratchets_1_4_zyklop_accessories_1_4_8790_hma_deep.html

Wera - 8790 HMA Deep
05004501001 - 4013288210128

Wera Werkzeuge GmbH
Korzerter Straße 21-25
D-42349 Wuppertal
Tel: +49 (0)2 02 / 40 45-0
E-Mail: info@wera.de

Further versions in this product family:

						
		mm	inch	mm	mm	mm
05004500001	violett	4.0		50.0	6.7	11.8
05004501001	leuchtgruen	5.0		50.0	8.0	11.8
05004502001	leuchtorange	5.5		50.0	8.6	11.8
05004503001	blau	6.0		50.0	9.2	11.8
05004504001	gelb	7.0		50.0	10.8	11.8
05004505001	leuchtpink	8.0		50.0	11.8	11
05004506001	gruen	9.0		50.0	12.8	12
05004507001	leuchtgelb	10.0		50.0	14.7	12.8
05004508001	cyan	11.0		50.0	15.8	14.0
05004509001	schwarz	12.0		50.0	16.8	15.0
05004510001	tuerkis	13.0		50.0	17.8	16.0
05004511001	pink	14.0		50.0	19.8	17.0
05004512001	weiss	15.0		50.0	20.8	18.0
05004520001	tuerkis		1/2"	50.0	17.8	16.0

Web link

https://products.wera.de/en/zyklop_ratchets_and_accessories_the_zyklop_ratchets_the_zyklop_ratchets_1_4_zyklop_accessories_1_4_8790_hma_deep.html

Wera - 8790 HMA Deep
 05004501001 - 4013288210128

Wera Werkzeuge GmbH
 Korzter Straße 21-25
 D-42349 Wuppertal
 Tel: +49 (0)2 02 / 40 45-0
 E-Mail: info@wera.de