



<b>EAN:</b>	4013288184214	<b>Size:</b>	280x55x40 mm
<b>Part number:</b>	05003780001	<b>Weight:</b>	513 g
<b>Article number:</b>	8006 C	<b>Country of origin:</b>	CZ
		<b>Customs tariff number:</b>	82041100

- Switchover lever for convenient direction change
- Fine-pitched with 72 teeth for a return angle of only 5°
- Secure socket locking
- Multi-component Kraftform handle for optimum pressure and tensile loads.
- Combines robustness, slim design, and little weight.

Zyklop Hybrid ratchet with switchover lever and 1/2 drive, low weight, ergonomic Kraftform handle with slim head design, long lever and with an extension option.



**Web link**

[https://products.wera.de/en/zyklop\\_ratchets\\_and\\_accessories\\_the\\_zyklop\\_ratchets\\_the\\_zyklop\\_ratchets\\_1\\_2\\_the\\_zyklop\\_hybrid\\_ratchet\\_1\\_2\\_8006\\_c.html](https://products.wera.de/en/zyklop_ratchets_and_accessories_the_zyklop_ratchets_the_zyklop_ratchets_1_2_the_zyklop_hybrid_ratchet_1_2_8006_c.html)

Wera - 8006 C  
05003780001 - 4013288184214

Wera Werkzeuge GmbH  
Korzerter Straße 21-25  
D-42349 Wuppertal  
Tel: +49 (0)2 02 / 40 45-0  
E-Mail: [info@wera.de](mailto:info@wera.de)

### The Zyklop Hybrid Ratchet



Zyklop Hybrid ratchet with long overall length (leverage effect) and slim ratchet head



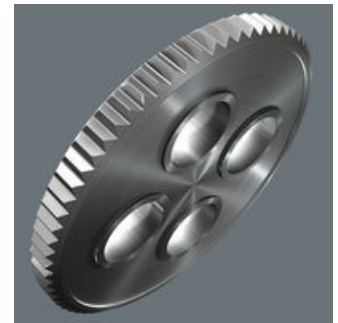
Combines robustness, slim design, and little weight.

### Zyklop Hybrid ratchet



We wanted to integrate all the mostly-desired ratchet advantages in a single tool. Our idea was to develop a light ratchet with an ergonomic handle, slim design, long lever and an extension option. Since the term "hybrid" refers to a combination from various sectors, it was quite easy to decide on the name.

### Low return angle



The reversible ratchet with 72 fine-pitched teeth has a low return angle of only 5°. This short stroke allows fast and precise work in all types of installation.

### Ball lock



The ball lock ensures sockets and accessories are securely fitted, providing increased safety during operation. A short press on the release button allows the tool to be changed quickly.

### Kraftform



Multi-component Kraftform handle for optimum pressure and tensile loads.

### Ideal for working in confined spaces







Very slim ratchet head.

### Higher torque transfer



Larger overall length for higher torque transfer.

### Further versions in this product family:

				
	inch	mm	mm	mm
05003780001	1/2"	281	34	37

### Web link

[https://products.wera.de/en/zyklop\\_ratchets\\_and\\_accessories\\_the\\_zyklop\\_ratchets\\_the\\_zyklop\\_ratchets\\_1\\_2\\_the\\_zyklop\\_hybrid\\_ratchet\\_1\\_2\\_8006\\_c.html](https://products.wera.de/en/zyklop_ratchets_and_accessories_the_zyklop_ratchets_the_zyklop_ratchets_1_2_the_zyklop_hybrid_ratchet_1_2_8006_c.html)

Wera - 8006 C

05003780001 - 4013288184214

Wera Werkzeuge GmbH

Korzerter Straße 21-25

D-42349 Wuppertal

Tel: +49 (0)2 02 / 40 45-0

E-Mail: [info@wera.de](mailto:info@wera.de)