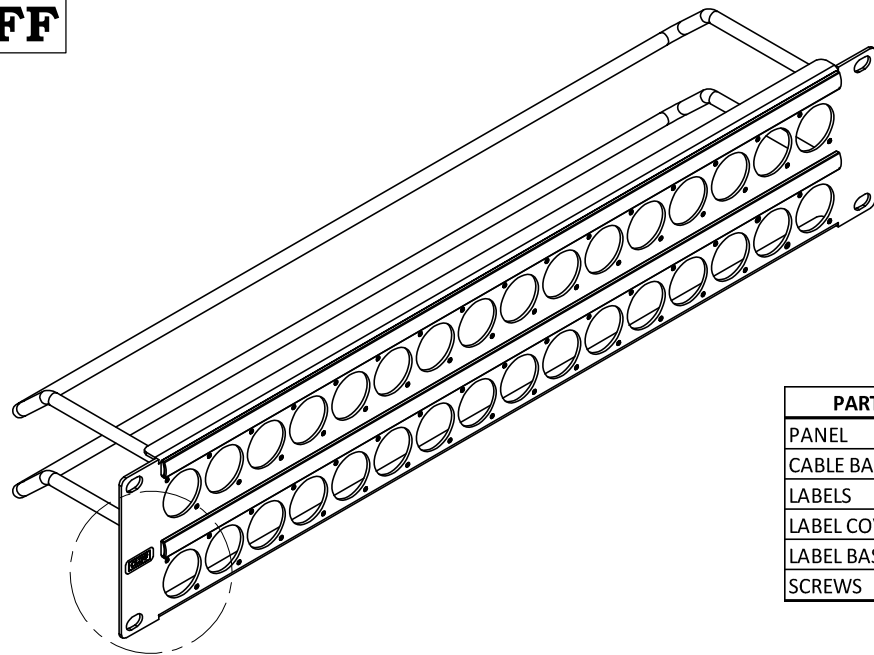


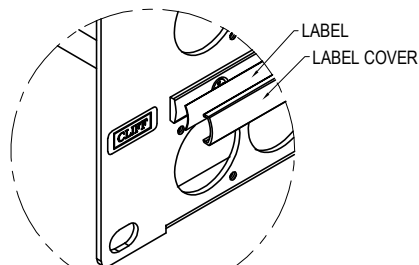
ISS.	AMEND	DATE
1	ISSUED	29/07/20



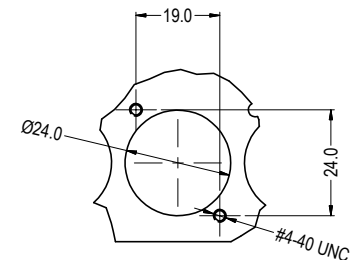
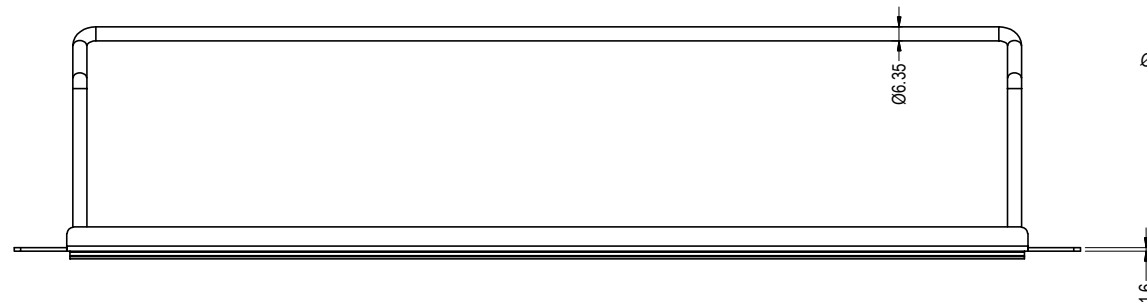
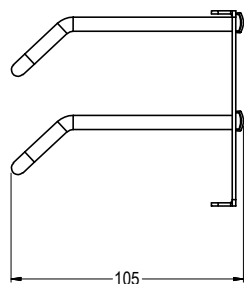
## NOTES:-

- SUPPLIED FULLY ASSEMBLED AND INCLUDES 68x #4-40 UNC BLACK COUNTERSUNK SCREWS (2x BAGS OF 34x)
- PANEL TO RACK SCREWS NOT INCLUDED

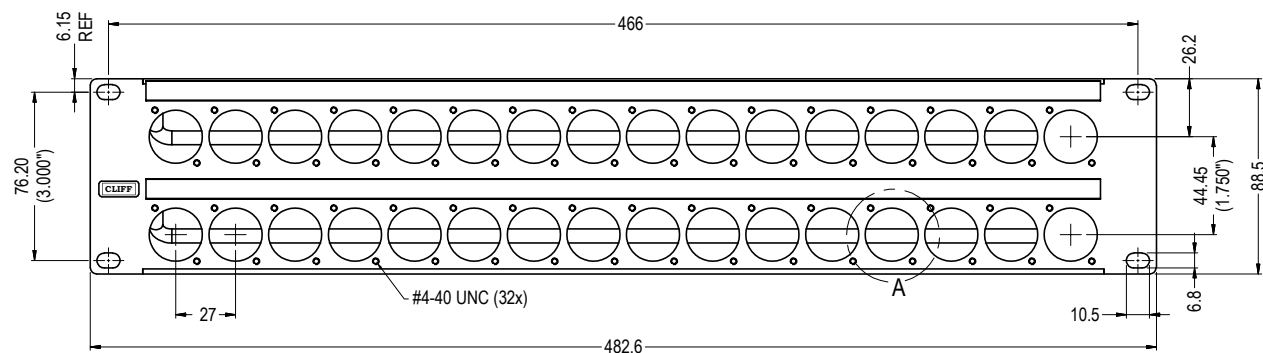
PART	MATERIAL
PANEL	STEEL, BLACK POWDER COATED
CABLE BARS	STAINLESS STEEL
LABELS	PAPER, WHITE
LABEL COVERS	THERMOPLASTIC, CLEAR
LABEL BASES	THERMOPLASTIC, CLEAR
SCREWS	STEEL, BLACK



VIEW SHOWING LABEL & LABEL COVER REMOVED



DETAIL VIEW A  
(32x POSITIONS)



**RoHS**  
COMPLIANT

## TOLERANCE

NO DEC. PLACE ±  
1 DEC. PLACE ±  
2 DEC. PLACE ±  
HOLE Ø ±  
ANGLES ±  
UNLESS  
OTHERWISE STATED

## Cliff Electronic Components Ltd.

76 Holmethorpe Avenue, Holmethorpe Industrial Estate,  
Redhill, Surrey, RH1 2PF, England, UK  
Tel: 01737-771375 Fax: 01737-766012 Website: www.cliffuk.co.uk

THE CONTENTS OF THIS DOCUMENT MUST NOT BE COPIED OR DISCLOSED  
TO A 3rd PARTY WITHOUT WRITTEN PERMISSION OF CLIFF UK. © 2020

DIMENSIONS IN MILLIMETERS UNLESS OTHERWISE STATED. WORK TO DIMENSIONS. REMOVE ALL BURRS. IF IN DOUBT ASK.

MATERIAL: SEE TABLE

FINISH: SEE TABLE

DRAWN: TJO

APPROVED: DPJ

3rd ANGLE PROJECTION:



DO NOT SCALE

TITLE: 2U x 32 PANEL ASSEMBLY #4-40 UNC HOLES

DRWG. No. CP30157

FORM: A4DRWGH