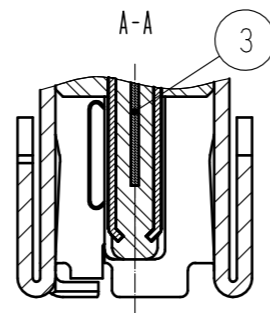
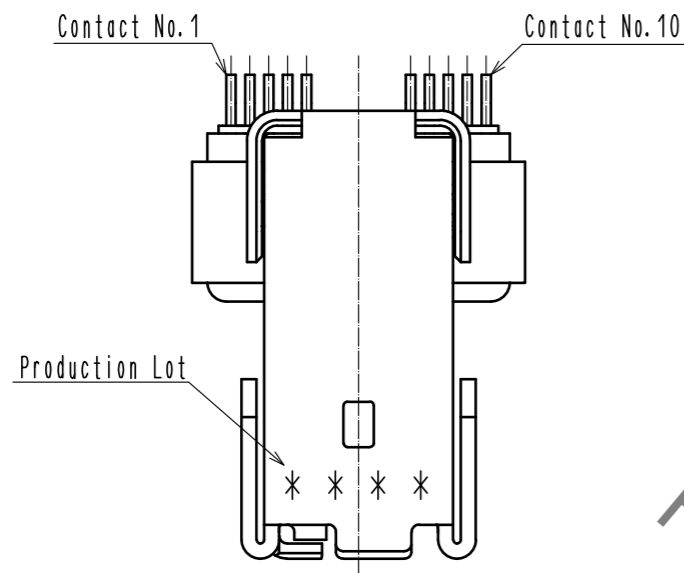


Jun.1.2020 Copyright 2020 HIROSE ELECTRIC CO., LTD. All Rights Reserved.
In case of consideration for using Automotive equipment / device which demand high reliability, kindly contact our sales window correspondents.



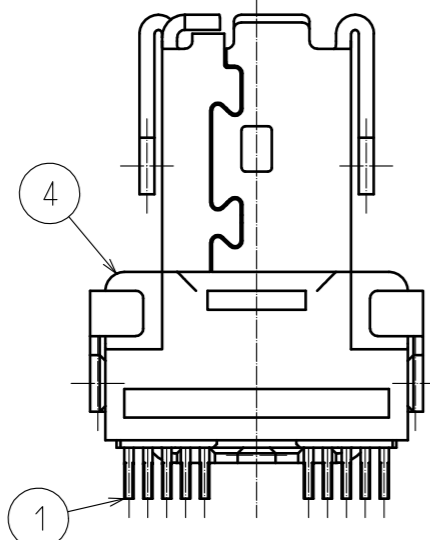
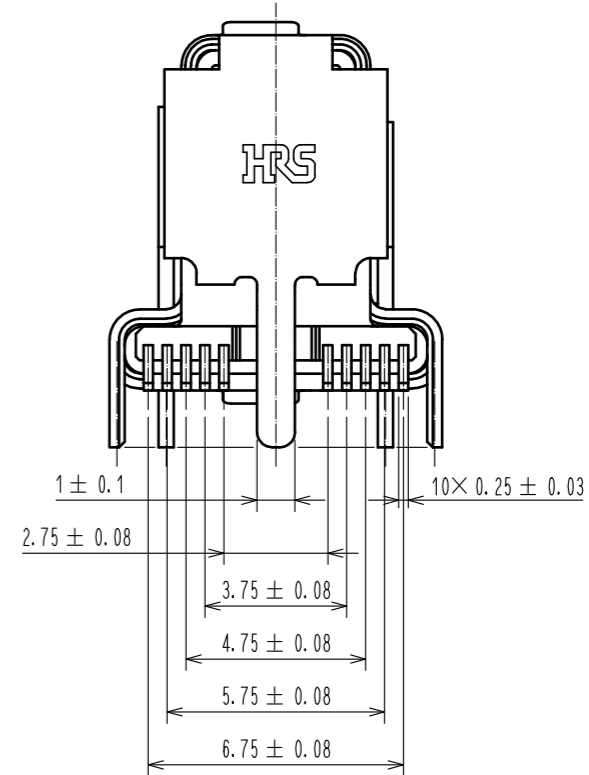
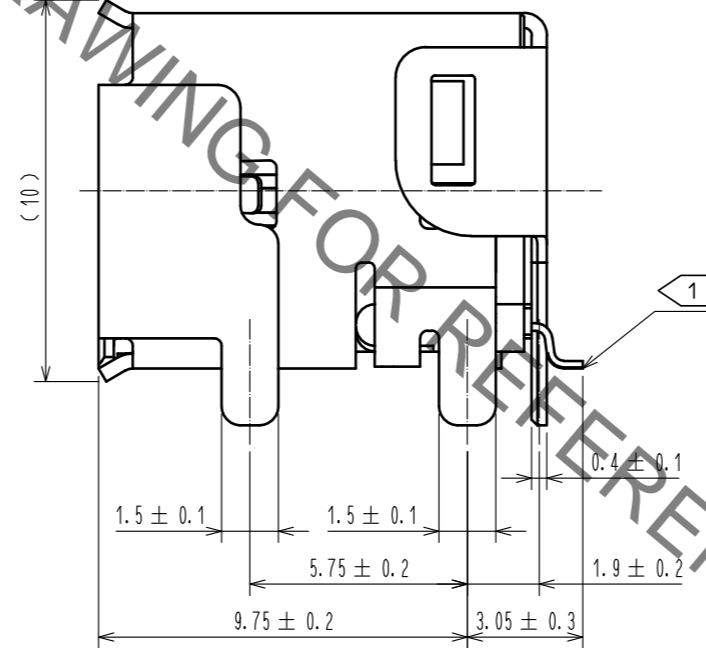
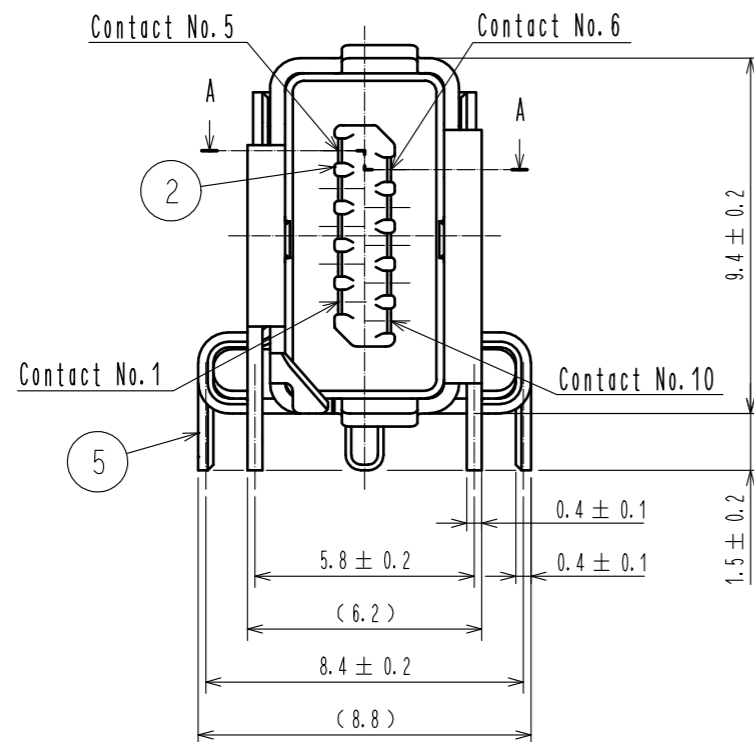
Notes. 1 Co-planarity is within 0.1 mm.

2. As for part No.5 the performance remains good even if there are rubbing wounds by the assembly process.
And the performance remains good though there might be a difference in the plating luster between each plating lots.

3 Per reel : 400 pcs.

4 Refer to the mated condition diagram for the panel thickness and layout.

5. This product is mounted by reflow soldering.
Refer to specification sheet ELC-129430-00-00 for reflow soldering.



3	Stainless Steel		7	PE	
2	LCP	Gray - UL94V-0	6	PS	
1	Copper Alloy	Contact area : Gold 0.2 μm min. Lead area : Gold 0.03 μm min. Under plating : Nickel 2 μm min.	5	Stainless Steel	Surface : Tin 1 μm min. Under plating : Nickel 0.2 μm min.
			4	LCP	Gray - UL94V-0
NO.	MATERIAL	FINISH . REMARKS	NO.	MATERIAL	FINISH . REMARKS
UNITS mm		SCALE 5 : 1	COUNT 1	DESCRIPTION OF REVISIONS DIS-E-00002758	DESIGNED MT. YASUDA
HIROSE ELECTRIC CO., LTD.		APPROVED : RI. TAKAYASU	20170328	DRAWING NO.	EDC-129430-00-00
		CHECKED : KI. NAGANUMA	20170327	PART NO.	IX61G-A-10P
		DESIGNED : TS. SAKAIZAWA	20170327	CODE NO.	CL251-0021-0-00
		DRAWN : TS. SAKAIZAWA	20170327		
					DATE 20191219
					1/3

Jun.1.2020 Copyright 2020 HIROSE ELECTRIC CO., LTD. All Rights Reserved.
In case of consideration for using Automotive equipment / device which demand high reliability, kindly contact our sales window correspondents.

