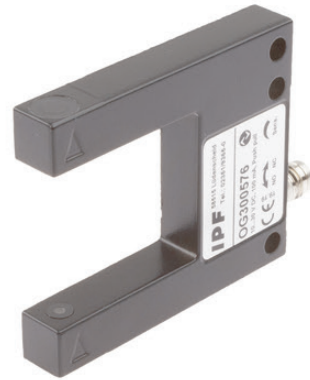


**OG300576**
**OPTICAL SENSORS • FORKED LIGHT BARRIERS**

sensor optical, fork, Increased soiling reserve, 50x10x60mm, fork width 30mm, 10-30V DC, 1x PNP/NPN NC/NO, IO-Link, Connector M8 3pin, IP67, Zinc die-cast+Plastic, Infrared light, 0.2kHz pulsed, Manual adjustment


**MECHANICAL FEATURES**

Ambient temperature	-25 °C ... 60 °C
Degree of protection (IP)	IP67
Design	Cuboid
Fork depth	35 mm
Fork light barrier design	Furcate
Fork width	30 mm
Housing material	Zinc die-cast
Material of optical surface	Plastic
Sensor height	50 mm
Sensor length	10 mm
Sensor width	60 mm

**ELECTRICAL FEATURES**

Analog output 0 V ... 10 V	-
Analog output 4 mA ... 20 mA	-
Connection to amplifier	-
Decay time	2.5 ms
Equipment protection class	Protection class 3
Hysteresis	0.2 mm
IO-Link compatible	+
No-load current	30 mA
Number of pins	3
Number of switching outputs	1
Operating voltage	10 V ... 30 V
Rated switching current	100 mA
Relative repeat accuracy	0.03 mm
Repeatability +/-	30 µm
Response time	2.5 ms
Reverse polarity protection	+
Scanning function	Light-/dark-on mode
Setting procedure	Manual adjustment
Short-circuit protection	+
Switching frequency	200 Hz

## ELECTRICAL FEATURES

Type of electrical connection	Connector M8
Type of switching function	Normally closed contact/normally open contact
Type of switching output	PNP/NPN
Type of the forked light barrier	Increased soiling reserve
Voltage drop	1 V
Voltage type	DC
With communication interface, analog	-
With communication interface, RS-232	-
With other analog output	-
With time function	-

## OPTICAL FEATURES

Laser protection class	None
Min. object size	2 mm
Resolution	2000 µm
Light beam form	Point
Pulsed light source	+

## OTHER FEATURES

Feeding technology	+
--------------------	---

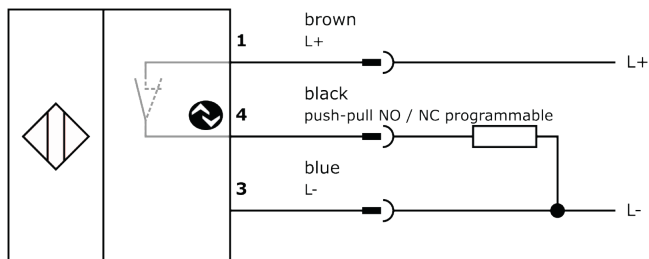
## Other

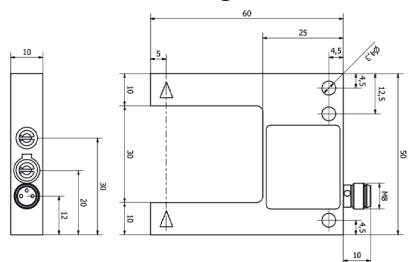
Packaging dimensions	150mm x 10mm x 160mm
Shipping weight	0.07kg
Tariff code	85365019

## Classification

ipf product group	110
eClass 8.0	27270909
eClass 9.0	27270909
eClass 9.1	27270909
ETIM-5.0	EC002720
ETIM-6.0	EC002720
ETIM-7.0	EC002720

## Connection



**Dimensional drawing****Installation**

Mounting / installation may only be carried out by a qualified electrician!

**Disposal****Software**

Any software, drivers or IODD files that may be required to operate your device can be downloaded free of charge from our homepage: [www.ipf-electronic.com](http://www.ipf-electronic.com)

**Safety warnings**

Before initial operation, please make sure to follow all safety instructions that may be provided in the product information.

Never use these devices in applications where the safety of a person depends on their functionality.

LED lighting systems can generate intensive UV radiation, which can damage your eyes in case of improper use. The manufacturer cannot be held responsible for damages that result from improper use or connection.