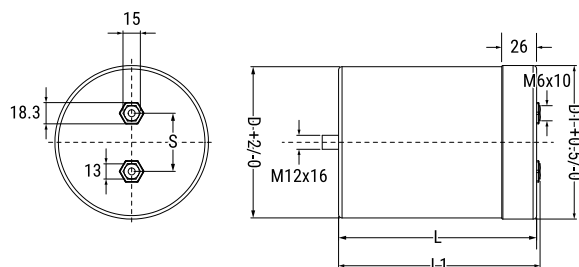


C44U_M, Film, Metallized Polypropylene, DC Link, 2100 uF, 10%, 900 VDC



General Information

| | |
|----------------|--|
| Series: | C44U_M |
| Dielectric: | Metallized Polypropylene |
| Style: | Can |
| Features: | DC Filtering, Energy Storage |
| RoHS: | Yes |
| Lead: | Screw Terminals M6 |
| AEC-Q200: | No |
| Miscellaneous: | Thermal Resistance = 1.8 C/W. Weight = 13100 grams. |

Dimensions

| | |
|----|---------------|
| D | 116mm +2mm |
| L | 273mm +/-2mm |
| L1 | 276mm +/-2mm |
| S | 50mm +/-0.3mm |

Packaging Specifications

| | |
|---------------------|---------------|
| Mounting: | Bolt - M12x16 |
| Packaging: | Bulk, Bag |
| Packaging Quantity: | 4 |

Specifications

| | |
|------------------------|--|
| Capacitance: | 2100 uF |
| Capacitance Tolerance: | 10% |
| Voltage DC: | 900 VDC |
| Temperature Range: | -40/+85°C |
| Rated Temperature: | 75°C |
| Insulation Resistance: | 0.01 MOhms |
| Max dV/dt: | 6 V/us |
| Resistance: | 1.5 mOhms (10kHz) |
| Ripple Current: | 100 Amps (10kHz 40C), 12265 Amps (Peak) |
| Inductance: | 80 nH |