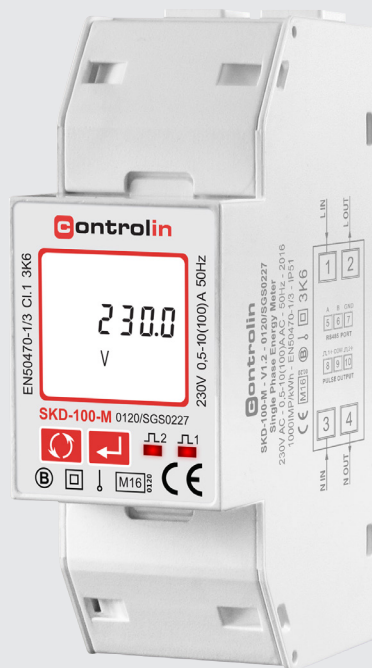


Data Sheet

2016 v1.0

SKD-100-M DIN Rail Multifunction Power Meter (MID Certified)

- MID B&D Certified by SGS UK
- Certified for Single Phase
- Certified for Import / Export kWh
- Certificate Number 0120/SGS0227
- Built in Pulse & Modbus Comms



SKD-100-M Multifunction Power Meter

The SKD-100-M is a new generation modern design power monitor that will measure and display electrical power quality parameters. It has been engineered to cover most applications (Single Phase networks / Built in Pulse and RS485 Modbus / Import and Export kWh), replacing the need for several different models of this power meter.

As the demand for MID certified meters has increased, we have obtained annex B and D of the EC Directive 2004/22/EC. This power meter has been tested and certified for single phase networks and import and export active energy (kWh).

The SKD-100-M is produced to the highest quality and utilizes the latest microprocessor and technology. It has a blue backlit display and 16 different measuring parameters. With built in pulsed outputs and RS485 Modbus RTU it is fully compatible for integration with BMS and remote monitoring systems.

Parameters

- | | |
|--------------------------------|----------------------------------|
| • Phase to Neutral Voltage (V) | • Import Active Energy (kWh) |
| • Phase Current (A) | • Export Active Energy (kWh) |
| • Frequency (Hz) | • Total Active Energy (kWh) |
| • Power Factor (PF) | • Import Reactive Energy (kVARh) |
| • Power Max Demand (MD kW) | • Export Reactive Energy (kVARh) |
| • Active Power (kW) | • Total Reactive Energy (kVARh) |
| • Reactive Power (kVAR) | |
| • Apparent Power (kVA) | |