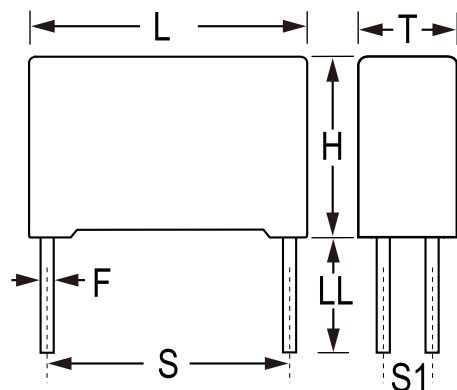


C4AF, Film, Metallized Polypropylene, Power, 4.7 uF, 10%, 400 VAC, 800 VDC, 85°C, Lead Spacing = 37.5mm



#### General Information

|                 |                                      |
|-----------------|--------------------------------------|
| Series:         | C4AF                                 |
| Dielectric:     | Metallized Polypropylene             |
| Style:          | Radial                               |
| Features:       | Harsh Environmental Conditions       |
| RoHS:           | Yes                                  |
| Lead:           | 4 Wire Leads                         |
| Qualifications: | AEC-Q200, IEC61071, EN61071, VDE0560 |
| AEC-Q200:       | Yes                                  |
| Miscellaneous:  | Rth = 18 C/W.                        |

#### Dimensions

|    |                 |
|----|-----------------|
| L  | 42mm +0.6mm     |
| H  | 37mm +0.2mm     |
| T  | 28mm +0.4mm     |
| S  | 37.5mm +/-0.4mm |
| S1 | 10.2mm +/-0.4mm |
| LL | 6mm +0/-2mm     |
| F  | 1.2mm +/-0.05mm |

#### Packaging Specifications

|                     |           |
|---------------------|-----------|
| Packaging:          | Bulk, Box |
| Packaging Quantity: | 36        |

#### Specifications

|                        |                                    |
|------------------------|------------------------------------|
| Capacitance:           | 4.7 uF                             |
| Capacitance Tolerance: | 10%                                |
| Voltage AC:            | 400 VAC                            |
| Voltage DC:            | 800 VDC                            |
| Temperature Range:     | -55/+105°C                         |
| Rated Temperature:     | 85°C                               |
| Dissipation Factor:    | 0.07% MAX                          |
| Insulation Resistance: | 6.38 MOhms                         |
| Max dV/dt:             | 90 V/us                            |
| Resistance:            | 3.4 mOhms                          |
| Ripple Current:        | 16.1 Amps Irms (MAX), 423 Amps Ipk |
| Inductance:            | 29 nH (ESL)                        |