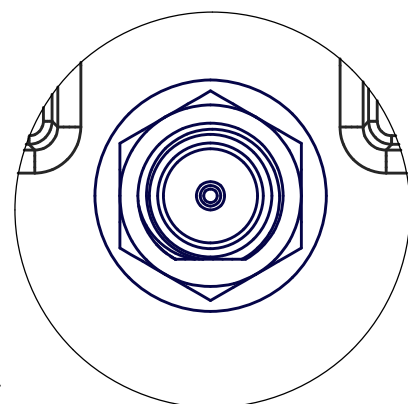
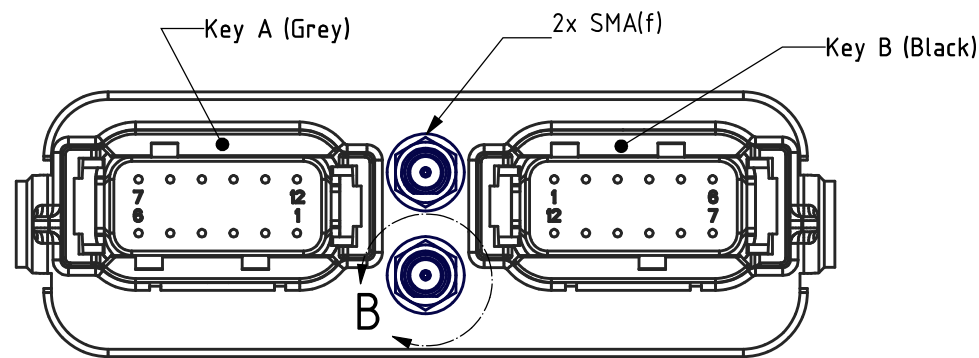
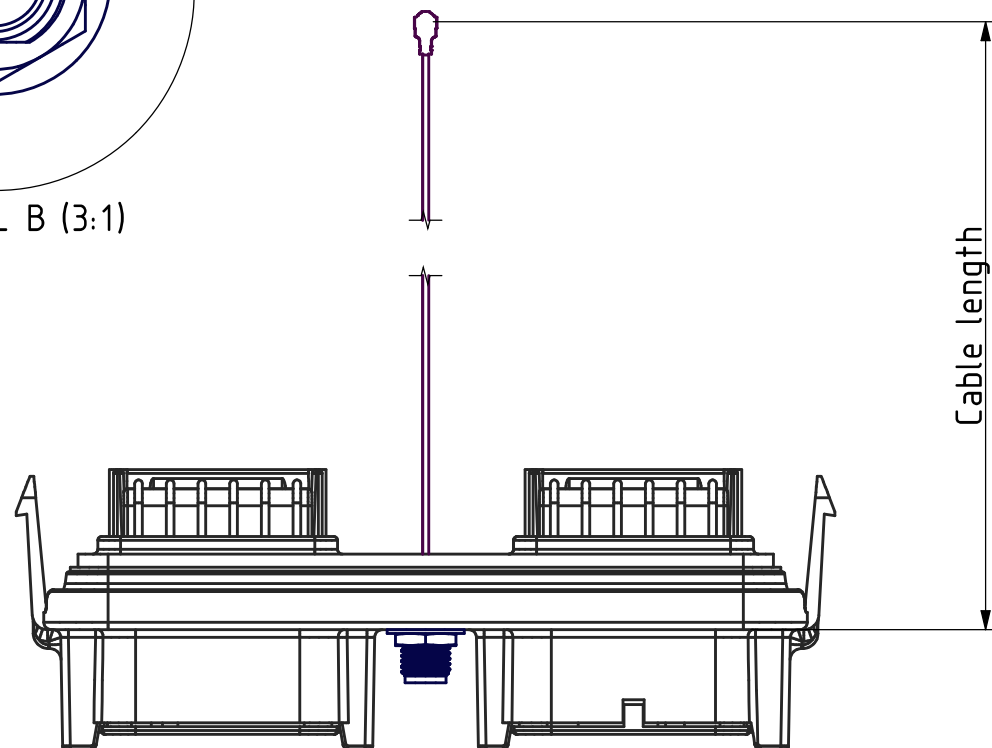


Offerers will be held liable for the payment of damages. All rights reserved in the event of the grant of a patent, utility model or ornamental design registration.

The copying, distribution and utilization of this document as well as the communication of its contents to others without expressed authorization is prohibited.

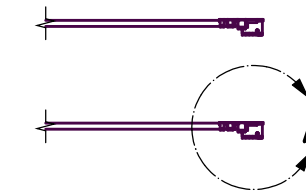
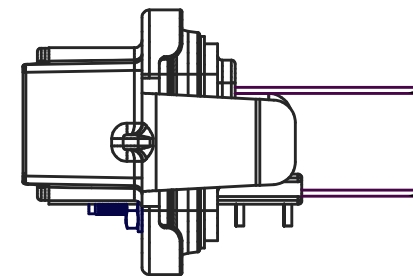


DETAIL B (3:1)

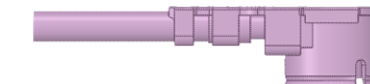


1. Dimensions are in mm
2. Dimension tolerance $\pm 0.025\text{mm}$
3. Contact plating mating side: nickel; PCB side: tin
4. This EEC Box header (receptacle) mates with DTM06-12SA-*** and DTM06-12SB-*** plug
5. This header is used with the enclosure EEC-325X4*-****
6. Contacts #20 rating: 7.5A continuous each
7. For detailed dimensions see drawing DTM13-12PA-12PB-R008

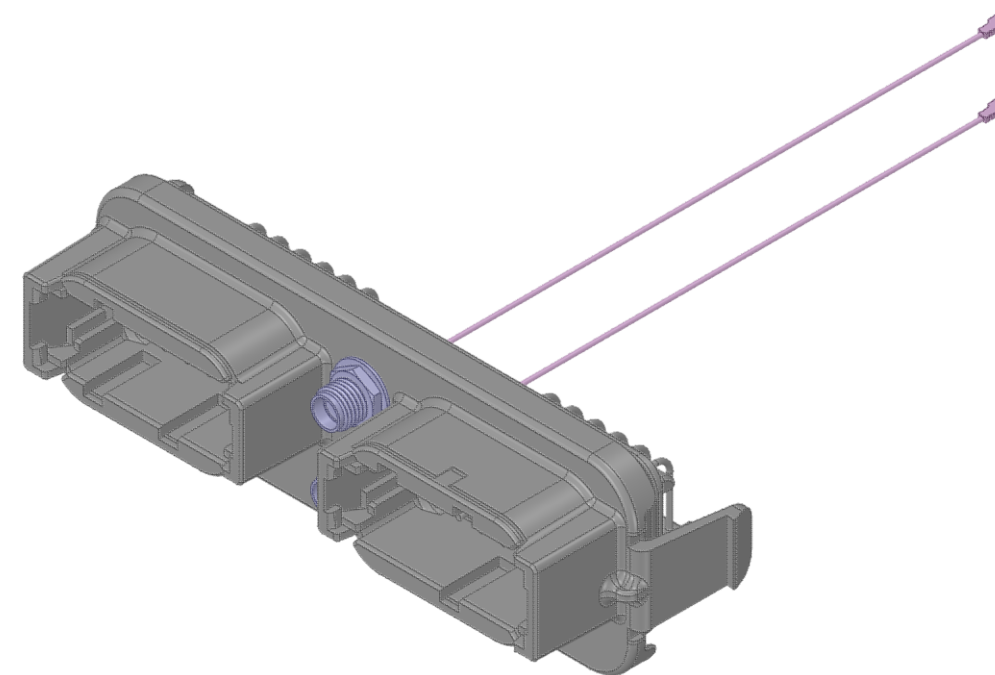
Part Number	Cable length
DTM13-12PA-12PB-R203	100mm
DTM13-12PA-12PB-R205	120mm




2xU.FL



DETAIL A
SCALE 5:1



Applicable for:				Tolerances		Surface	Scale	Dimensions	Projection		
Deutsch EEC Box System for profesional electronics				DIN 16 901 - 140			1:1	mm [in]	Third Angle		
							Material				
					Date	Name	Title,description 24 way header with contacts size 20 and 2xSMA(f) HF connectors integrated				
				Drawn	18.01.2020						
				Chk.							
				Modified	19.03.2020						
											
							Drawing No.	DTM13-12PA-12PB-Rx__SMA		Sheet /Sheets	
									1/1		
Rev	Change		Date	Name				File:	DTM13-12-PA-12PB-Rx-SMA.rsd		

