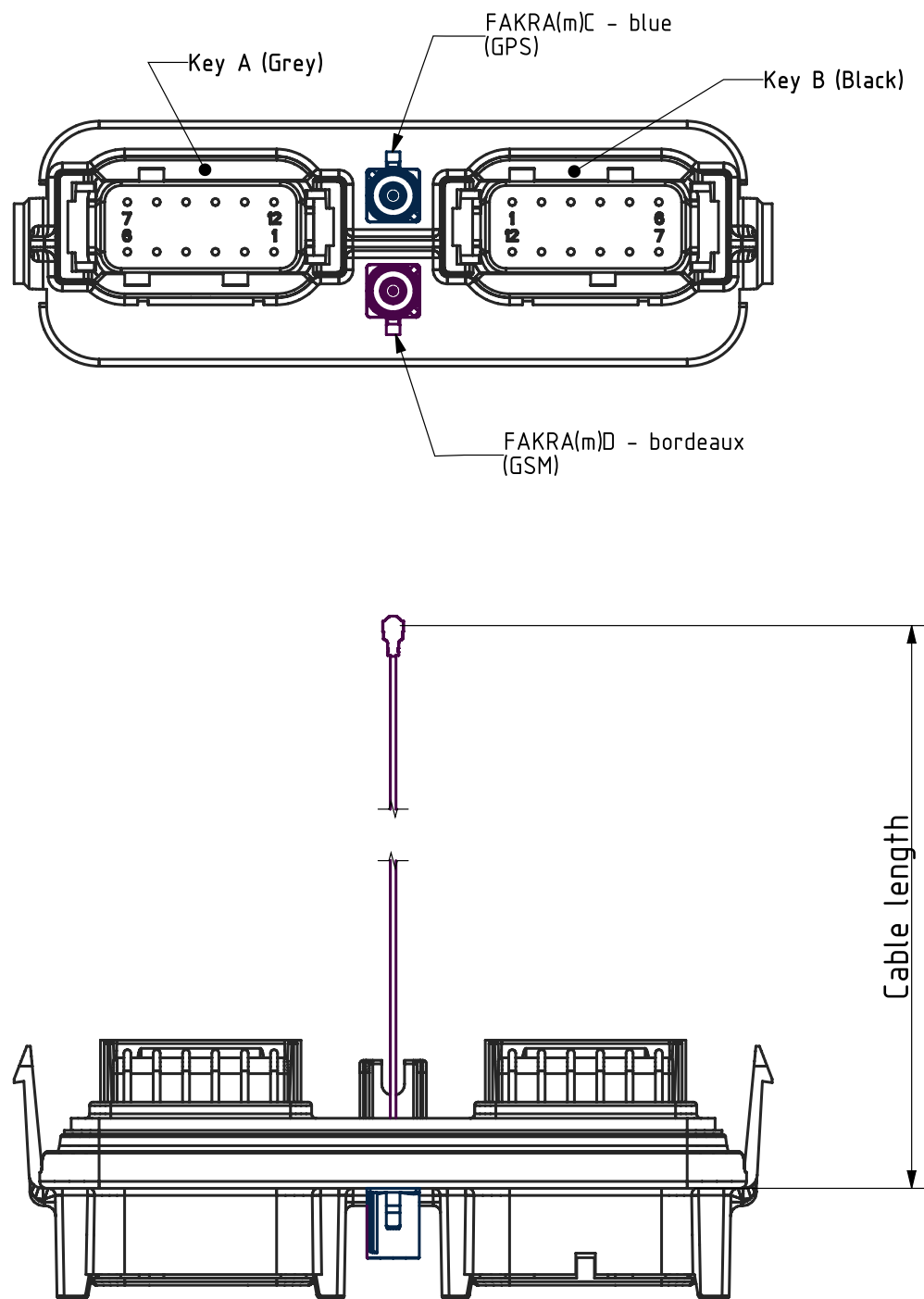


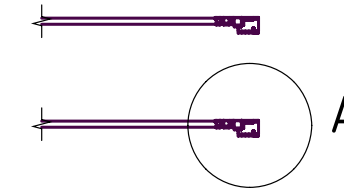
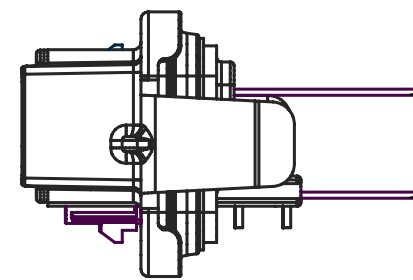
Offenders will be held liable for the payment of damages. All rights reserved in the event of the grant of a patent, utility model or ornamental design registration.

The copying, distribution and utilization of this document as well as the communication of its contents to others without expressed authorization is prohibited.

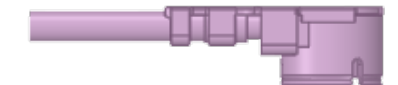


1. Dimensions are in mm
2. Dimension tolerance $\pm 0.025\text{mm}$
3. Contact plating mating side: nickel; PCB side: tin
4. This EEC Box header (receptacle) mates with DTM06-12SA-*** and DTM06-12SB-*** plug
5. This header is used with the enclosure EEC-325X4*-****
6. Contacts #20 rating: 7.5A continuous each
7. For detailed dimensions see drawing DTM13-12PA-12PB-R008

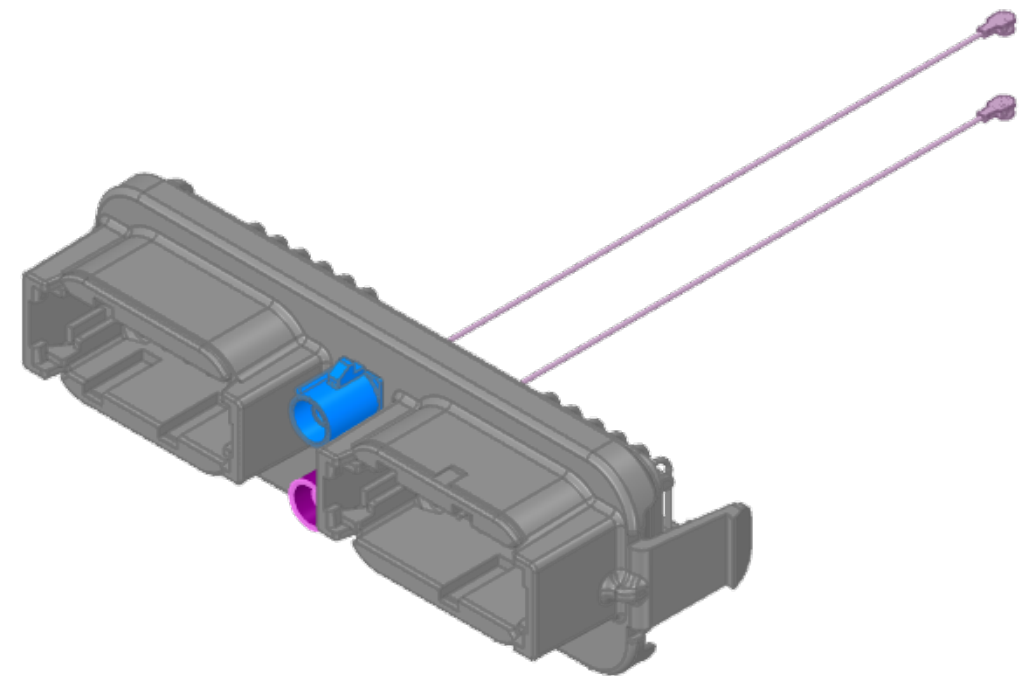
Part Number	Cable length
DTM13-12PA-12PB-R201	100mm
DTM13-12PA-12PB-R204	120mm



2xU.FL



DETAIL A
SCALE 5:1



Applicable for:				Tolerances		Surface	Scale	1:1	Dimensions	mm [in]	Projection	Third Angle
Deutsch EEC Box System for professional electronics				DIN 16 901 - 140			Material					
Rev	Change	Date	Name	Drawn	18.01.2020		Title description					
				Chk.								
				Modified	19.03.2020							
				imcon. ELECTRONICS			Drawing No.				Sheet /Sheets	
				DTM13-12PA-12PB-Rxxx				File: DTM13-12-PA-12PB-Rx-FAKRA.rsdcc				1/2