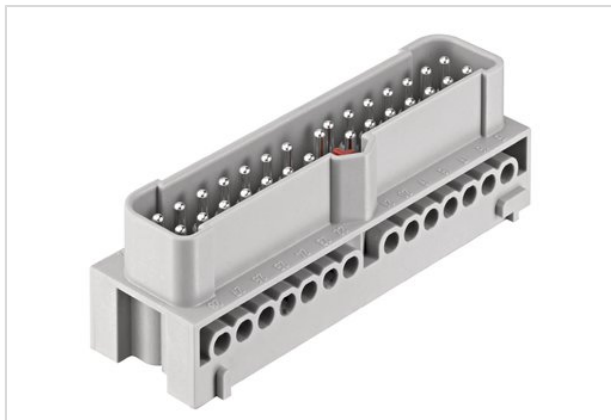


## Han-Eco Mod.28E-SMC-MI-SCT



|                    |   |
|--------------------|---|
| Part number        | 19 41 028 2601  |
| Specification      | Han-Eco Mod.28E-SMC-MI-SCT  |
| HARTING eCatalogue | <a href="https://b2b.harting.com/19410282601">https://b2b.harting.com/19410282601</a> |

### Identification

|          |          |
|----------|----------|
| Category | Inserts  |
| Series   | Han-Eco® |

### Version

|                      |                   |
|----------------------|-------------------|
| Termination method   | Screw termination |
| Gender               | Male              |
| Size                 | 24 B              |
| With wire protection | Yes               |
| Number of contacts   | 28                |
| PE contact           | Yes               |

### Technical characteristics

|                           |                              |
|---------------------------|------------------------------|
| Conductor cross-section   | 0.75 ... 2.5 mm <sup>2</sup> |
| Rated current             | 16 A                         |
| Rated voltage             | 500 V                        |
| Rated impulse voltage     | 6 kV                         |
| Pollution degree          | 3                            |
| Rated voltage acc. to UL  | 600 V                        |
| Rated voltage acc. to CSA | 600 V                        |
| Insulation resistance     | >10 <sup>10</sup> Ω          |
| Limiting temperature      | -40 ... +125 °C              |
| Tightening torque         | 0.5 Nm                       |
| Mating cycles             | ≥500                         |



Pushing Performance

## Material properties

|   |  |
|---|--|
| Material (insert)                         | Polycarbonate (PC)                                     |
| Colour (insert)                           | RAL 7032 (pebble grey)                                 |
| Material (contacts)                       | Copper alloy   |
| Surface (contacts)                        | Silver plated  |
| Material flammability class acc. to UL 94 | V-0  |
| RoHS                                      | compliant with exemption                               |
| RoHS exemptions                           | 6(c): Copper alloy containing up to 4 % lead by weight |
| ELV status                                | compliant with exemption                               |
| China RoHS                                | 50   |
| REACH Annex XVII substances               | No   |
| REACH ANNEX XIV substances                | No   |
| REACH SVHC substances                     | Yes  |
| REACH SVHC substances                     | Lead   |

## Commercial data

|                                |   |
|--------------------------------|---|
| Packaging size                 | 1   |
| Net weight                     | 106.5 g   |
| Country of origin              | Romania   |
| European customs tariff number | 85366990  |
| eCl@ss                         | 27440205 Contact insert for industrial connectors |