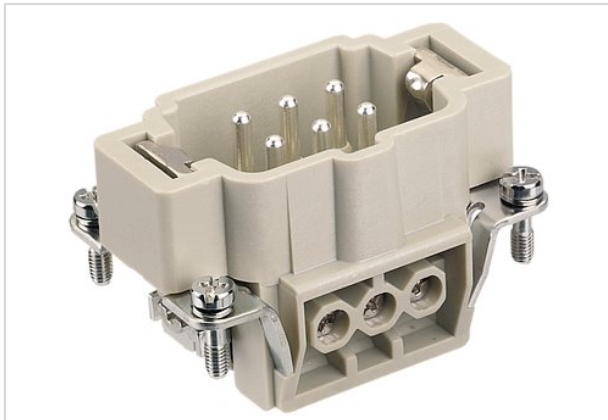


## Han 6Ex-M-s



Part number	09 36 006 2601
Specification	Han 6Ex-M-s
HARTING eCatalogue	<a href="https://b2b.harting.com/09360062601">https://b2b.harting.com/09360062601</a>

### Identification

Category	Inserts
Series	Han <sup>®</sup> Ex

### Version

Termination method	Screw termination
Gender	Male
Size	6 B
Number of contacts	6
PE contact	Yes
Details	ATTENTION! Only to be used with Han <sup>®</sup> Ex hoods and housings!

### Technical characteristics

Conductor cross-section	0.75 ... 2.5 mm <sup>2</sup>
Rated current	16 A
Rated voltage	90 V
Insulation resistance	>10 <sup>10</sup> Ω
Contact resistance	≤1 mΩ
Limiting temperature	-20 ... +40 °C
Tightening torque	0.5 Nm
Mating cycles	≥500

### Material properties

Material (insert)	Polycarbonate (PC)
Colour (insert)	RAL 7032 (pebble grey)



Pushing Performance

## Material properties

Material (contacts)	Copper alloy
Surface (contacts)	Silver plated
Material flammability class acc. to UL 94	V-0
RoHS	compliant with exemption
RoHS exemptions	6(c): Copper alloy containing up to 4 % lead by weight
ELV status	compliant with exemption
China RoHS	50
REACH Annex XVII substances	No
REACH ANNEX XIV substances	No
REACH SVHC substances	Yes
REACH SVHC substances	Lead

## Commercial data

Packaging size	1
Net weight	50 g
Country of origin	Germany
European customs tariff number	85366990
eCl@ss	27440205 Contact insert for industrial connectors