

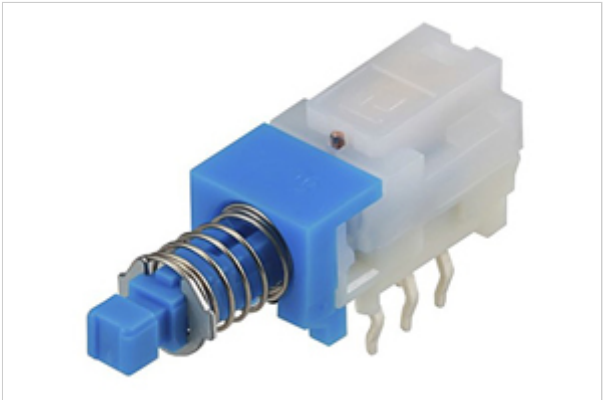


X CLOSE

Push Switch > SPUJ Series > SPUJ191900

## 2.0mm-travel Horizontal Type SPUJ Series

[Dimensions](#)	[Mounting Hole Dimensions](#)	[Actuator Configuration at Front Edge](#)
[Terminal Configuration](#)	[Circuit Diagram](#)	[Packing Specifications](#)
[Soldering Conditions](#)	[Products Line of Knob](#)	



Part number [Series Common Info](#)  
**SPUJ191900**

NET SHOP

3D CAD

RoHS

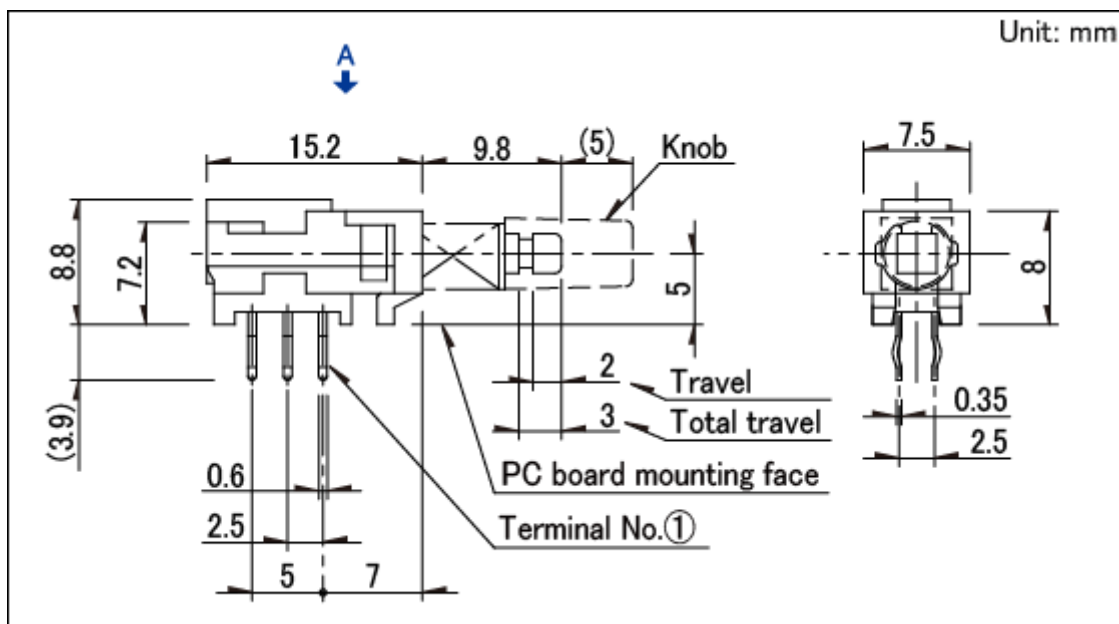
Print

Inquiry

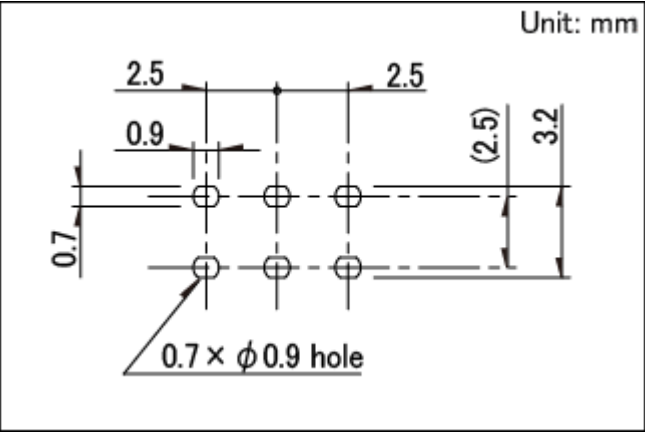
Changeover timing	Non shorting	
Travel	2mm	
Total travel	3mm	
Operating force	1.5 ± 1N	
Mounting method	PC board	
Poles	2	
Operation	Momentary	
Terminal type	Snap-in	
Operating temperature range	-10°C to +60°C	

Rating (max.)/(min.) (Resistive load)			0.1A 30V DC/50 $\mu$ A 3V DC
Electrical performance	Contact resistance (Initial performance/After lifetime)		20m $\Omega$ max./40m $\Omega$ max.
	Insulation resistance		100M $\Omega$ min. 500V DC
	Voltage proof		500V AC for 1 minute
	Terminal strength		5N for 1 minute
Mechanical performance	Actuator strength	Operating direction	50N
		Pulling direction	50N
	Operating life without load		10,000 cycles
Durability			40m $\Omega$ max.
	Operating life with load (at max. rated load)		10,000 cycles
			40m $\Omega$ max.
Environmental performance	Cold		-20°C 96h
	Dry heat		85°C 96h
	Damp heat		40°C, 90 to 95%RH
			96h
Minimum order unit (pcs.)	Japan	600	
	Export	3,000	

## Dimensions

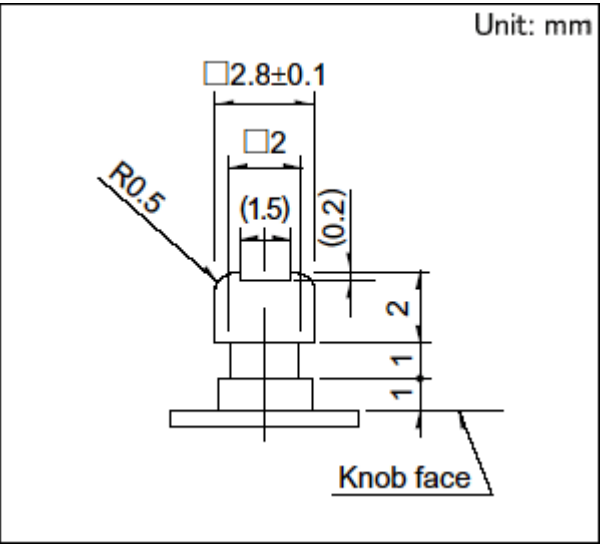


# Mounting Hole Dimensions

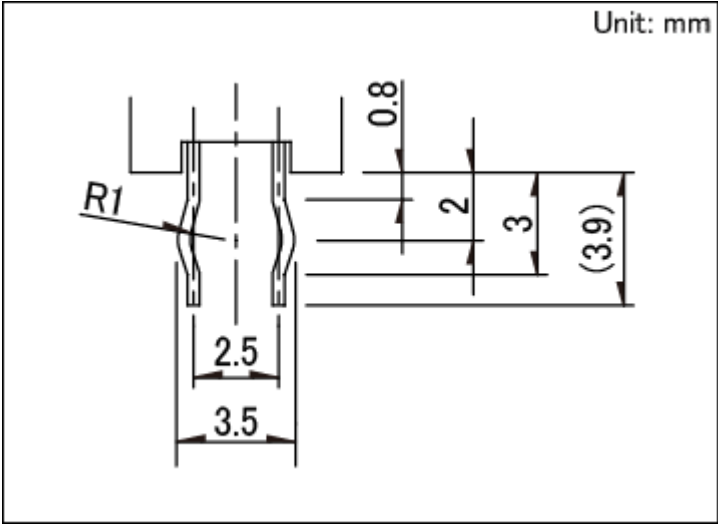


Viewed from direction A in the dimensions.

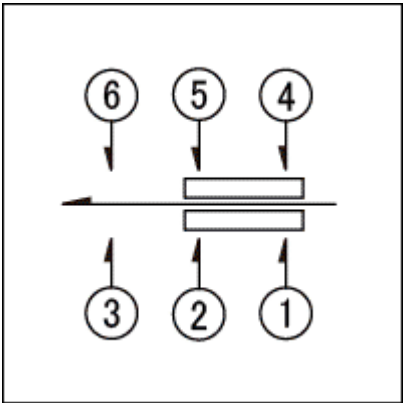
# Actuator Configuration at Front Edge



# Terminal Configuration



Circuit Diagram



Packing Specifications

Bulk

Number of packages (pcs.)	1 case / Japan	600
	1 case / export packing	3,000
Export package measurements (mm)		400 × 270 × 290

Soldering Conditions

Reference for Dip Soldering

Items	Preheating temperature-
	Preheating time -

Dip soldering

Soldering temperature 260±5°C

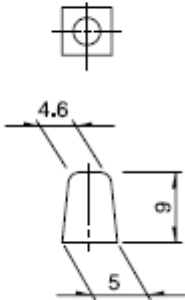
Duration of immersion 5±1s

Reference for Hand Soldering

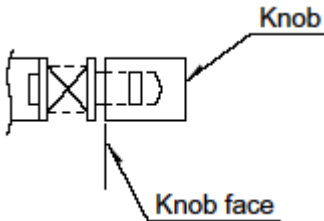
Soldering temperature300±5°C

Soldering time3+1/0s

Products Line of Knob

Knob outline drawing (Unit :mm)	Color	Model
	Black	UJ206022

We recommend the use of adhesive to secure the knob when mounting onto switches.



Notes are common to this series/models.

1. This site catalog shows only outline specifications. When using the products, please obtain formal specifications for supply.
2. Please place purchase orders per minimum order unit (integer).
3. Products other than those listed in the above chart are also available. Please contact us for details.

Inquiries about Products

[Inquiry](#)

COPYRIGHT© 2020 ALPS ALPINE CO., LTD