

Bellows suction cup HT1 (round)

SAB 60 HT1-60 G1/4-AG

Part no.:10.01.06.03059

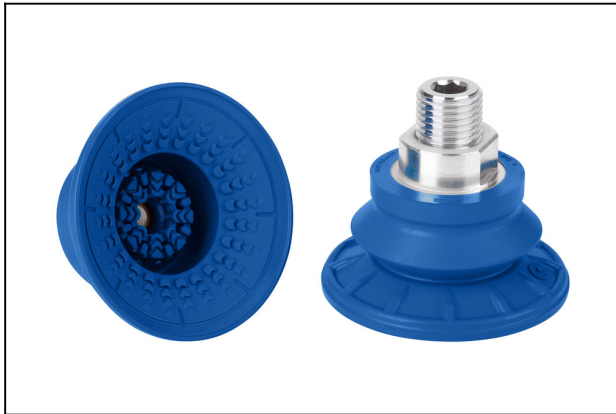
<https://www.schmalz.com/10.01.06.03059>



Homepage > Vacuum Technology for Automation > Vacuum Components > Vacuum Suction Cups > Suction Cups for Handling Sheet Metal >

Bellows Suction Cups SAB (1.5 Folds) > SAB 60 HT1-60 G1/4-AG

Bellows suction cup (round) for markless handling of workpieces



Size: 60

Suction cup material:

High temp material HT1

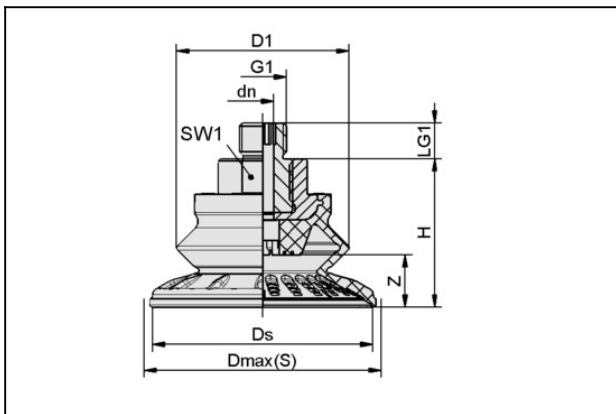
Material hardness: 60 °Sh

Vacuum connection: G1/4"-M

Number of folds: 1.5

Nipple material: Aluminium

Design Data



Attribute	Value
-----------	-------

dn	6 mm
----	------

D1	48 mm
----	-------

Dmax(S)	67 mm
---------	-------

Ds	61.1 mm
----	---------

G1	G1/4"-AG
----	----------

H	41.3 mm
---	---------

LG1	10 mm
-----	-------

SW1	22 mm
-----	-------

Z (Stroke)	14.5 mm
------------	---------

Technical Data

[Contact to Schmalz](#)

Schmalz Sp.z.o.o. | Kobaltowa 4, 62-002 Złotniki, Polen | +48 22 460 49 70 | schmalz@schmalz.pl

Page 1 of 2

Bellows suction cup HT1 (round)

SAB 60 HT1-60 G1/4-AG

Part no.:10.01.06.03059

<https://www.schmalz.com/10.01.06.03059>



Attribute	Value
Suction force (-600mbar)	82 N
Pull-off force	130 N
Lateral force	82 N
Lateral force (oily surface)	77 N
Volume	24 cm ³
Curve radius (min) (convex)	65 mm
Hose diameter (empf.) d	6 mm
Size	60
Number of folds	1.5
Suction cup material	High temp material HT1
Material hardness [Shore A]	60 Shore A
Weight	49.1 g
Product family	SAB

Note: Suction force: The specified suction forces are theoretical values at a vacuum of -0.6 bar and with a smooth, dry workpiece surface - they do not include a safety factor Lateral force: The specified lateral forces are values measured at a vacuum of -0.6 bar with a dry or oily, smooth, flat workpiece surface. Depending on the workpiece surface and its quality, the actual values may deviate from these values Hose diameter: The recommended hose diameter refers to a hose length of approx. 2 m