

Bellows suction cup HT1 (round)

SAB 100 HT1-60 G1/4-IG

Part no.:10.01.06.02961

<https://www.schmalz.com/10.01.06.02961>



Homepage > Vacuum Technology for Automation > Vacuum Components > Vacuum Suction Cups > Suction Cups for Handling Sheet Metal >

Bellows Suction Cups SAB (1.5 Folds) > SAB 100 HT1-60 G1/4-IG

Bellows suction cup (round) for markless handling of workpieces



Size: 100

Suction cup material:

High temp material HT1

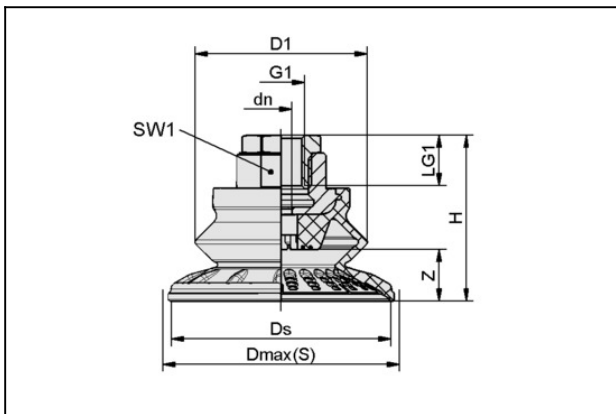
Material hardness: 60 °Sh

Vacuum connection: G1/4"-F

Number of folds: 1.5

Nipple material: Brass, nickel-plated

Design Data



Attribute	Value
-----------	-------

dn	6 mm
----	------

D1	77 mm
----	-------

Dmax(S)	110 mm
---------	--------

Ds	100.8 mm
----	----------

G1	G1/4"-IG
----	----------

H	61.8 mm
---	---------

LG1	20 mm
-----	-------

SW1	22 mm
-----	-------

Z (Stroke)	25.8 mm
------------	---------

Technical Data

[Contact to Schmalz](#)

Schmalz Sp.z.o.o. | Kobaltowa 4, 62-002 Złotniki, Polen | +48 22 460 49 70 | schmalz@schmalz.pl

Page 1 of 2

Bellows suction cup HT1 (round)

SAB 100 HT1-60 G1/4-IG

Part no.:10.01.06.02961

<https://www.schmalz.com/10.01.06.02961>



Attribute	Value
Suction force (-600mbar)	190 N
Pull-off force	357 N
Lateral force	220 N
Lateral force (oily surface)	214 N
Volume	92.5 cm ³
Curve radius (min) (convex)	90 mm
Hose diameter (empf.) d	6 mm
Size	100
Number of folds	1.5
Suction cup material	High temp material HT1
Material hardness [Shore A]	60 Shore A
Weight	101.9 g
Product family	SAB

Note: Suction force: The specified suction forces are theoretical values at a vacuum of -0.6 bar and with a smooth, dry workpiece surface - they do not include a safety factor Lateral force: The specified lateral forces are values measured at a vacuum of -0.6 bar with a dry or oily, smooth, flat workpiece surface. Depending on the workpiece surface and its quality, the actual values may deviate from these values Hose diameter: The recommended hose diameter refers to a hose length of approx. 2 m