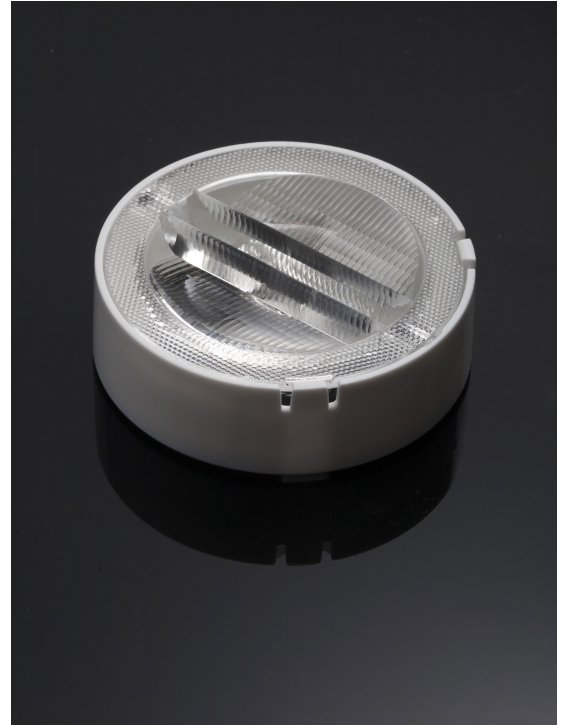


RONDA-ZT45-C

Double asymmetric beam for wall-washing and aisle lighting with holder C compatible with LEDiL HEKLA

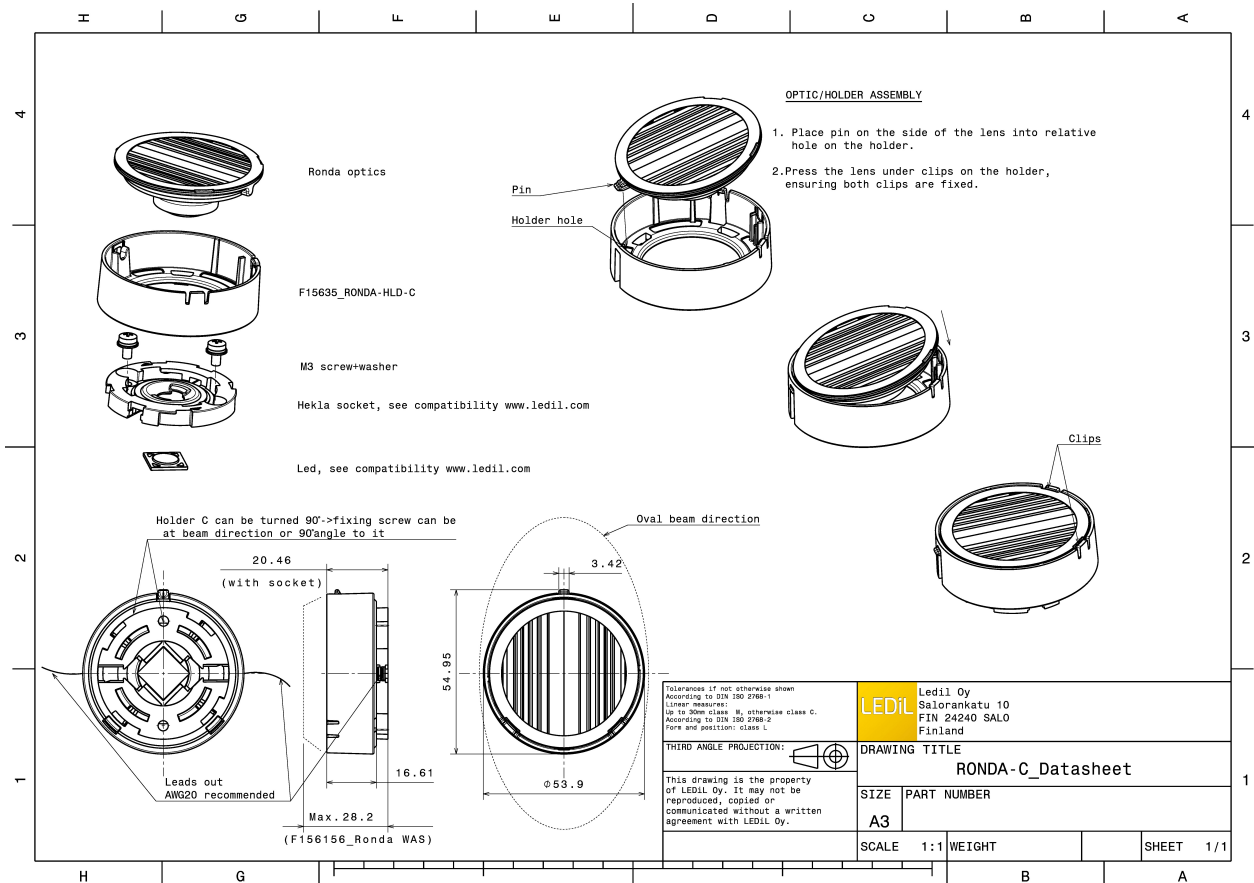
TECHNICAL SPECIFICATIONS:

Dimensions	Ø 53.9 mm
Height	16.6 mm
Fastening	socket
Colour	clear
Box size	
Box weight	0 kg
Quantity in Box	420 pcs
ROHS compliant	yes ⓘ



MATERIAL SPECIFICATIONS:

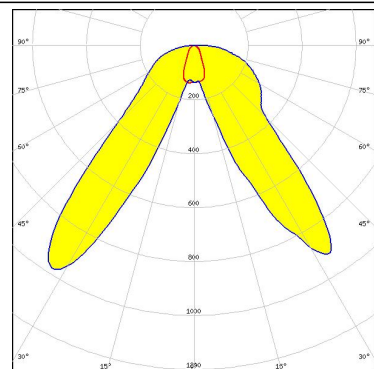
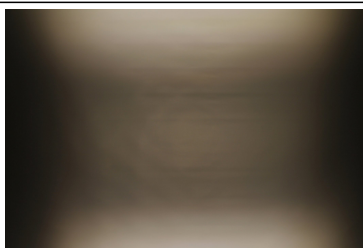
Component	Type	Material	Colour
RONDA-ZT45	Single lens	PMMA	clear
RONDA-HLD-C	Holder	PC	clear



PHOTOMETRIC DATA (MEASURED):

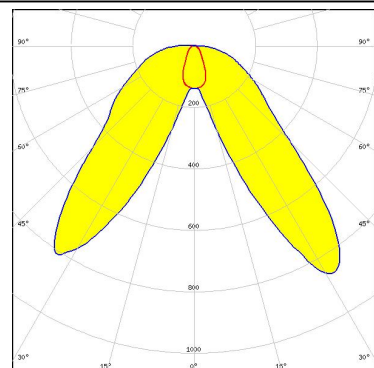
bridgelux.

LED V4 HD
FWHM Asymmetric
Efficiency 91 %
Peak intensity 1.000 cd/lm
LEDs/each optic 1
Light colour White
Required components:
F15253_HEKLA-SOCKET-A



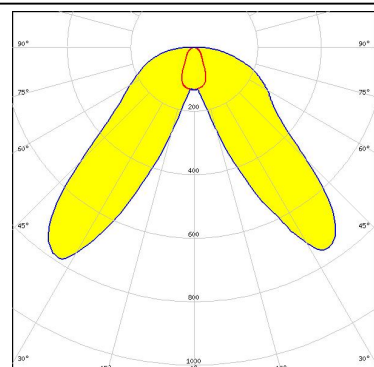
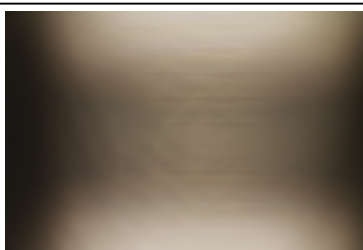
bridgelux.

LED V6 Gen6
FWHM Asymmetric
Efficiency 90 %
Peak intensity 0.870 cd/lm
LEDs/each optic 1
Light colour White
Required components:
F15253_HEKLA-SOCKET-A



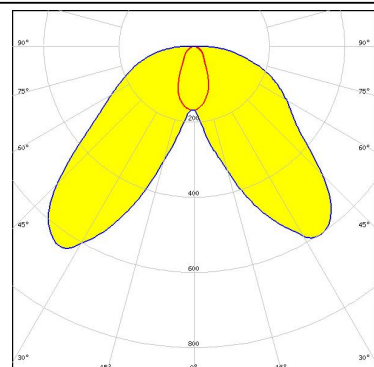
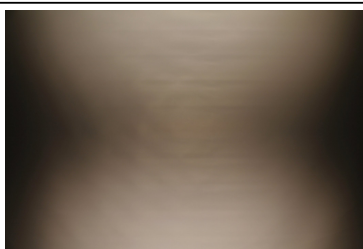
bridgelux.

LED V6 HD
FWHM Asymmetric
Efficiency 90 %
Peak intensity 0.800 cd/lm
LEDs/each optic 1
Light colour White
Required components:
F15255_HEKLA-SOCKET-C



bridgelux.

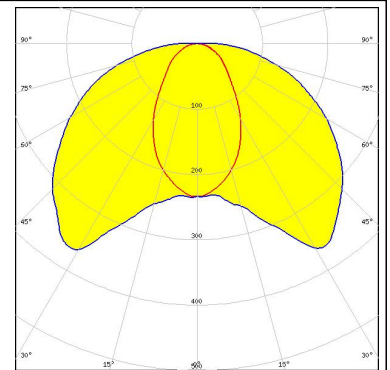
LED V9 HD
FWHM Asymmetric
Efficiency 89 %
Peak intensity 0.640 cd/lm
LEDs/each optic 1
Light colour White
Required components:
F15859_HEKLA-SOCKET-I



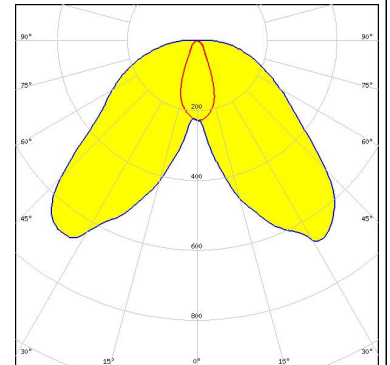
PHOTOMETRIC DATA (MEASURED):



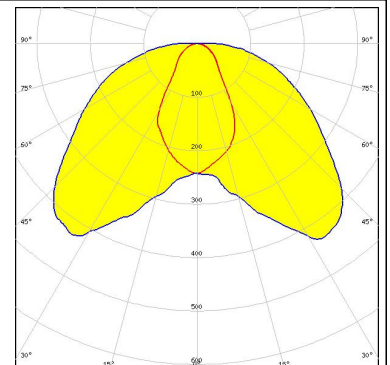
LED Vesta DTW 15mm (33W)
 FWHM Asymmetric
 Efficiency 80 %
 Peak intensity 0.370 cd/lm
 LEDs/each optic 1
 Light colour White
 Required components:
 C16142_HEKLA-SOCKET-K
 Bender Wirth: 491 Typ L8



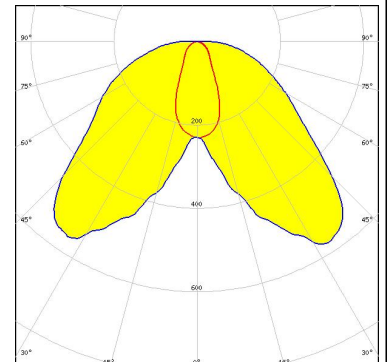
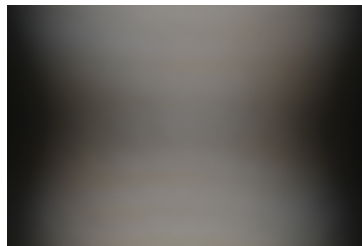
LED Vesta DTW 9mm (6W/12W)
 FWHM Asymmetric
 Efficiency 88 %
 Peak intensity 0.670 cd/lm
 LEDs/each optic 1
 Light colour White
 Required components:
 C16142_HEKLA-SOCKET-K
 Bender Wirth: 490 Typ L8



LED Vesta TW 13mm (25W)
 FWHM Asymmetric
 Efficiency 83 %
 Peak intensity 0.400 cd/lm
 LEDs/each optic 1
 Light colour White
 Required components:
 C16142_HEKLA-SOCKET-K
 Bender Wirth: 492 Typ L8



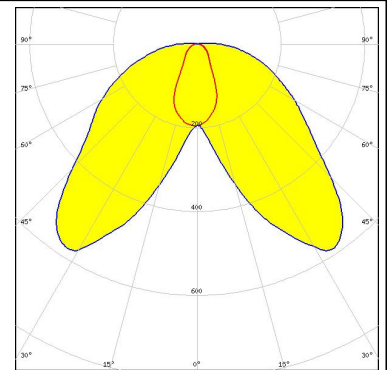
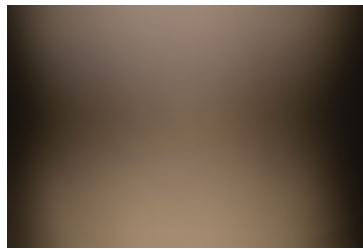
LED Vesta TW 9mm (12W)
 FWHM Asymmetric
 Efficiency 86 %
 Peak intensity 0.580 cd/lm
 LEDs/each optic 1
 Light colour White
 Required components:
 C16142_HEKLA-SOCKET-K



PHOTOMETRIC DATA (MEASURED):

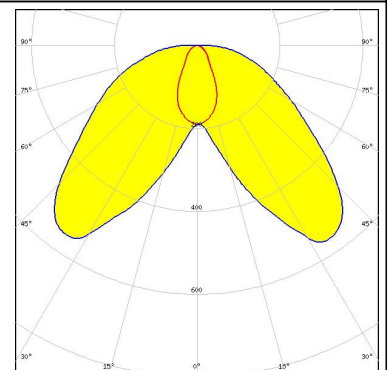
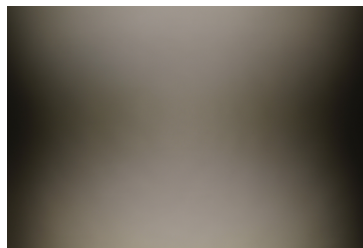
CITIZEN

LED CLC020 Series (Dim-To-Warm)
 FWHM Asymmetric
 Efficiency 85 %
 Peak intensity 0.590 cd/lm
 LEDs/each optic 1
 Light colour White
 Required components:
 C16142_HEKLA-SOCKET-K



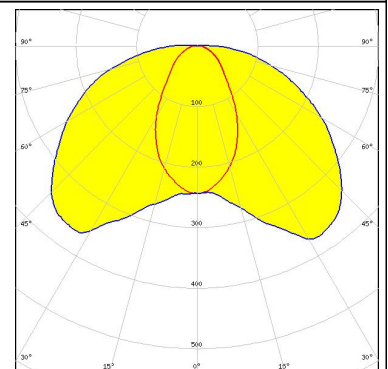
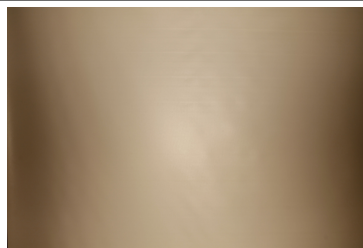
CITIZEN

LED CLL02x/CLU02x (LES10)
 FWHM Asymmetric
 Efficiency 88 %
 Peak intensity 0.570 cd/lm
 LEDs/each optic 1
 Light colour White
 Required components:
 F15255_HEKLA-SOCKET-C



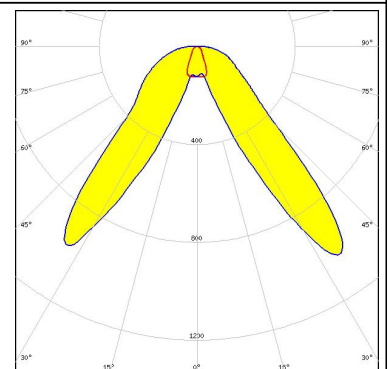
CITIZEN

LED CLL03x/CLU03x
 FWHM Asymmetric
 Efficiency 82 %
 Peak intensity 0.370 cd/lm
 LEDs/each optic 1
 Light colour White
 Required components:
 F15859_HEKLA-SOCKET-I



CITIZEN

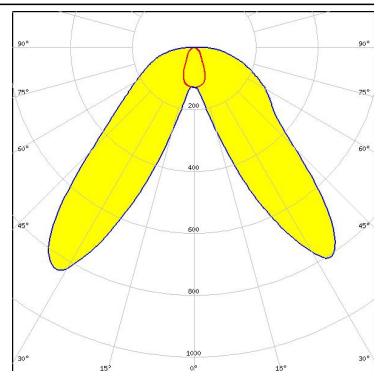
LED CLU LES 4.2mm (HI-Ver.3)
 FWHM Asymmetric
 Efficiency 91 %
 Peak intensity 1.000 cd/lm
 LEDs/each optic 1
 Light colour White
 Required components:
 F15255_HEKLA-SOCKET-C



PHOTOMETRIC DATA (MEASURED):

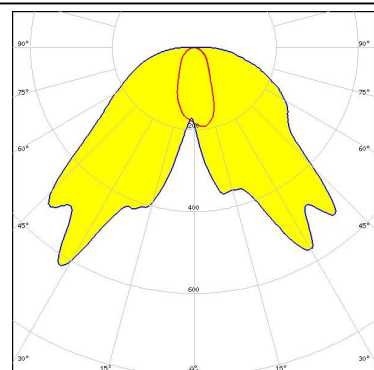
CITIZEN

LED CLU700/701
FWHM Asymmetric
Efficiency 90 %
Peak intensity 0.840 cd/lm
LEDs/each optic 1
Light colour White
Required components:
F15255_HEKLA-SOCKET-C



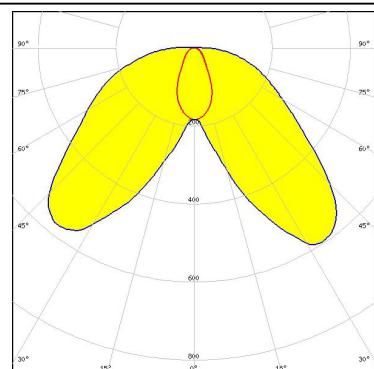
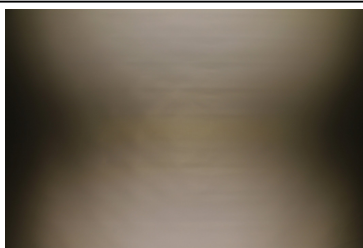
CITIZEN

LED LCN-C01B (Tunable White)
FWHM Asymmetric
Efficiency 85 %
Peak intensity 0.630 cd/lm
LEDs/each optic 1
Light colour White
Required components:
C16142_HEKLA-SOCKET-K
Bender Wirth: 481 Typ L8



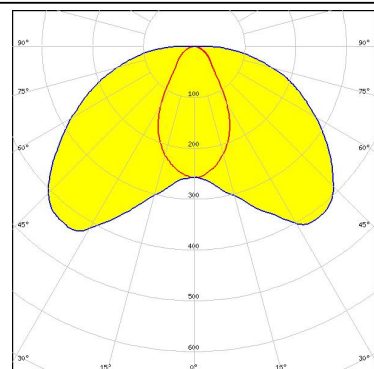
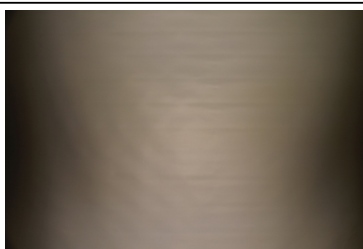
CREE

LED CMA1516
FWHM Asymmetric
Efficiency 91 %
Peak intensity 0.600 cd/lm
LEDs/each optic 1
Light colour White
Required components:
F15256_HEKLA-SOCKET-D



CREE

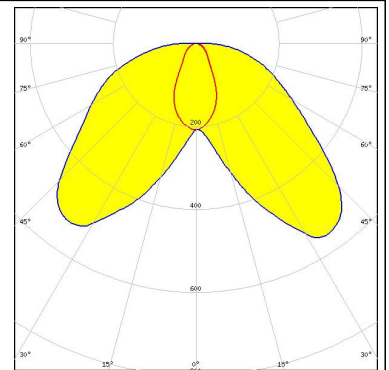
LED CMA1825
FWHM Asymmetric
Efficiency 89 %
Peak intensity 0.430 cd/lm
LEDs/each optic 1
Light colour White
Required components:
F15254_HEKLA-SOCKET-B



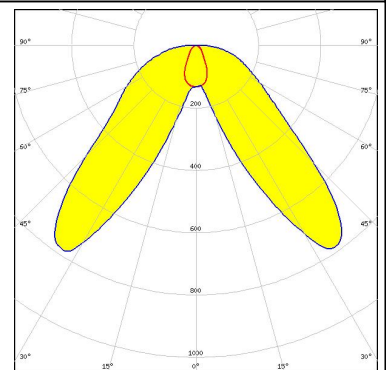
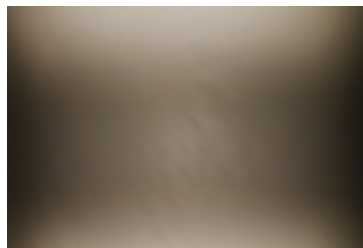
PHOTOMETRIC DATA (MEASURED):



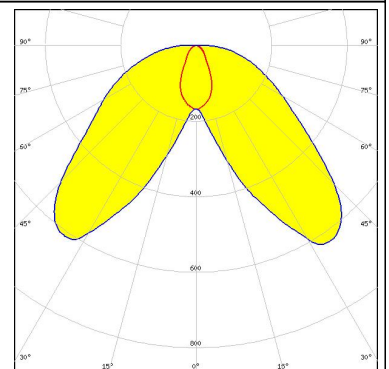
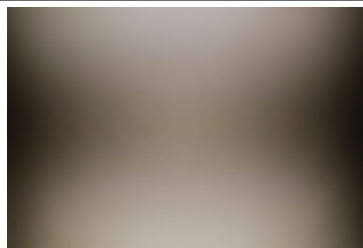
LED CMT14xx
FWHM Asymmetric
Efficiency 90 %
Peak intensity 0.550 cd/lm
LEDs/each optic 1
Light colour White
Required components:
F15255_HEKLA-SOCKET-C



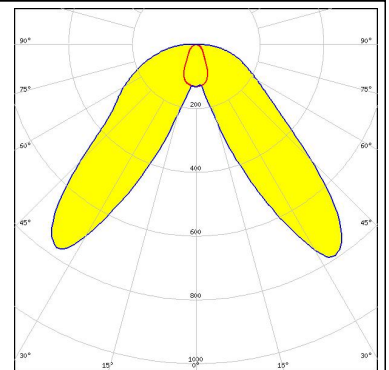
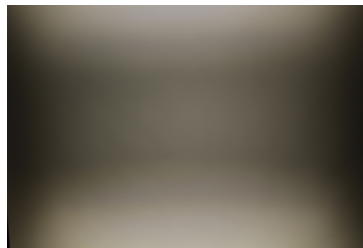
LED CXA/B 13xx
FWHM Asymmetric
Efficiency 90 %
Peak intensity 0.800 cd/lm
LEDs/each optic 1
Light colour White
Required components:
F15956_HEKLA-SOCKET-J



LED CXA/B 15xx
FWHM Asymmetric
Efficiency 90 %
Peak intensity 0.630 cd/lm
LEDs/each optic 1
Light colour White
Required components:
F15256_HEKLA-SOCKET-D



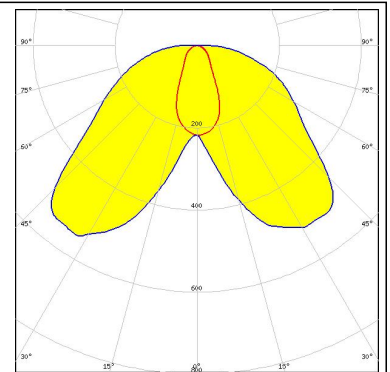
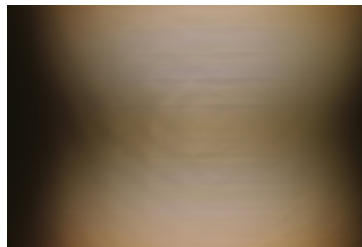
LED LUXEON CoB 1202s
FWHM Asymmetric
Efficiency 91 %
Peak intensity 0.790 cd/lm
LEDs/each optic 1
Light colour White
Required components:
F15848_HEKLA-SOCKET-G



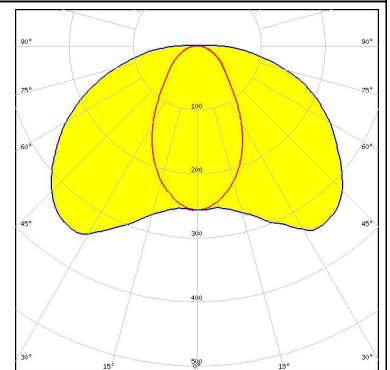
PHOTOMETRIC DATA (MEASURED):



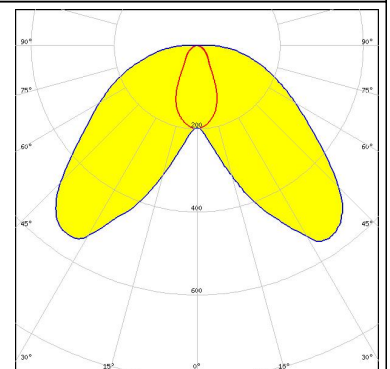
LED LUXEON CoB Dimtune 16x19
 FWHM Asymmetric
 Efficiency 87 %
 Peak intensity 0.550 cd/lm
 LEDs/each optic 1
 Light colour White
 Required components:
 C16142_HEKLA-SOCKET-K
 Bender Wirth: 499 Typ L8



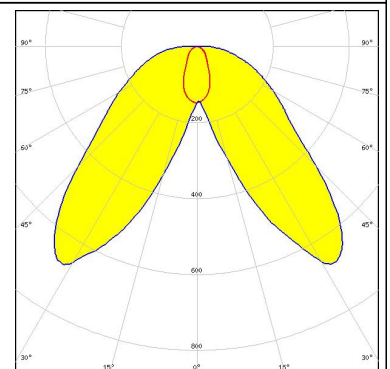
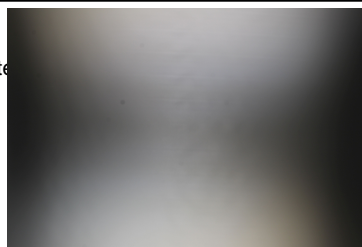
LED CXM-14
 FWHM Asymmetric
 Efficiency 81 %
 Peak intensity 0.350 cd/lm
 LEDs/each optic 1
 Light colour White
 Required components:
 F15859_HEKLA-SOCKET-I



LED CXM-9
 FWHM Asymmetric
 Efficiency 88 %
 Peak intensity 0.560 cd/lm
 LEDs/each optic 1
 Light colour White
 Required components:
 F15255_HEKLA-SOCKET-C



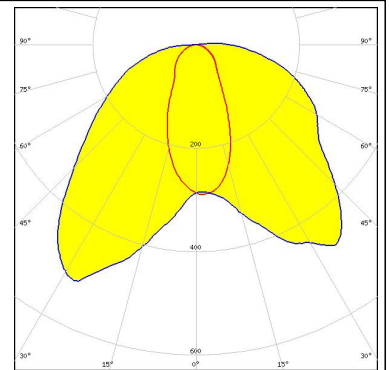
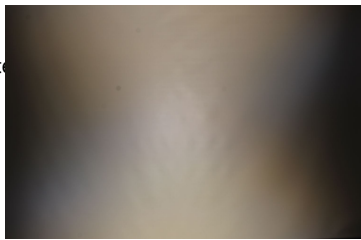
LED NJCWL024Z-V1MT: COB L-Type Tunable White
 FWHM Asymmetric
 Efficiency 85 %
 Peak intensity 0.680 cd/lm
 LEDs/each optic 1
 Light colour White
 Required components:
 C16142_HEKLA-SOCKET-K
 Bender Wirth: 497 Typ L8



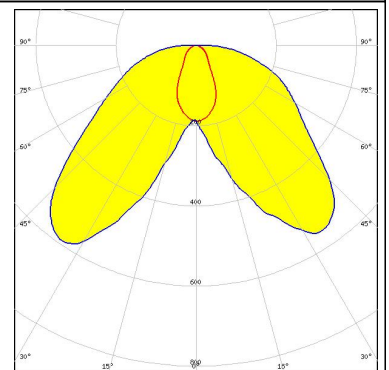
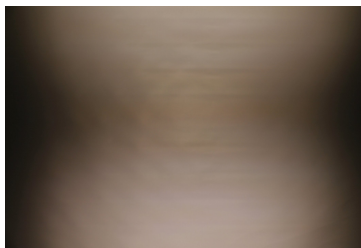
PHOTOMETRIC DATA (MEASURED):



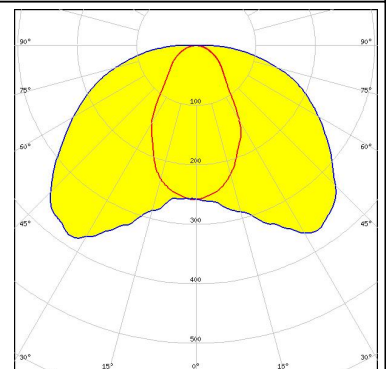
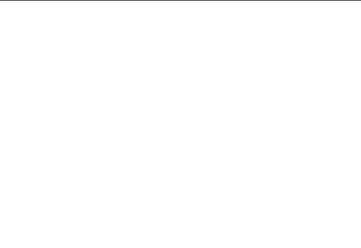
LED NVCWJ024Z-V1MT: COB J-Type Tunable White
 FWHM Asymmetric
 Efficiency 80 %
 Peak intensity 0.510 cd/lm
 LEDs/each optic 1
 Light colour White
 Required components:
 C16142_HEKLA-SOCKET-K
 Bender Wirth: 498 Typ L8



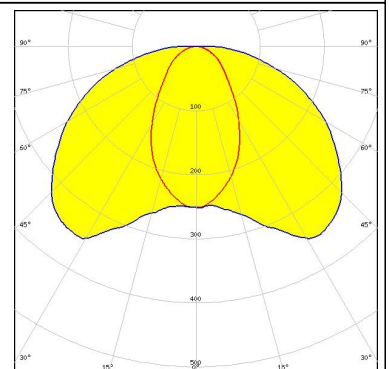
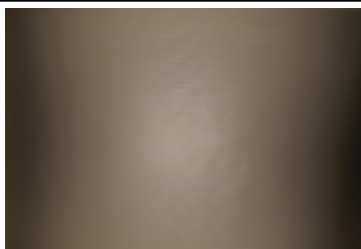
LED Fortimo SLM L09 CoB
 FWHM Asymmetric
 Efficiency 90 %
 Peak intensity 0.590 cd/lm
 LEDs/each optic 1
 Light colour White
 Required components:
 F15858_HEKLA-SOCKET-H



LED Fortimo SLM L13 CoB
 FWHM Asymmetric
 Efficiency 83 %
 Peak intensity 0.390 cd/lm
 LEDs/each optic 1
 Light colour White
 Required components:
 C16142_HEKLA-SOCKET-K
 Bender Wirth: 432 Typ L8



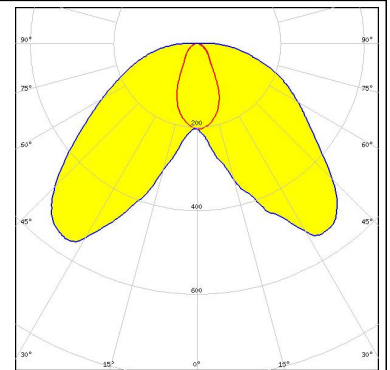
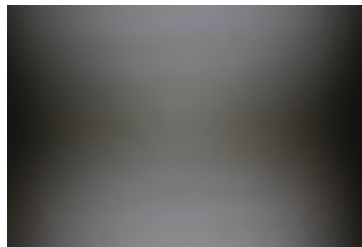
LED COB D Series LES 14.5 mm
 FWHM Asymmetric
 Efficiency 82 %
 Peak intensity 0.350 cd/lm
 LEDs/each optic 1
 Light colour White
 Required components:
 F15859_HEKLA-SOCKET-I



PHOTOMETRIC DATA (MEASURED):

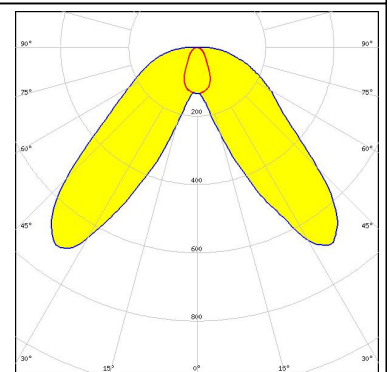
SAMSUNG

LED COB D Series LES 9.8 mm
FWHM Asymmetric
Efficiency 89 %
Peak intensity 0.560 cd/lm
LEDs/each optic 1
Light colour White
Required components:
F15255_HEKLA-SOCKET-C



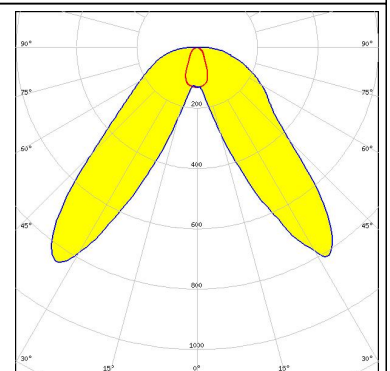
SAMSUNG

LED LC010C
FWHM Asymmetric
Efficiency 89 %
Peak intensity 0.710 cd/lm
LEDs/each optic 1
Light colour White
Required components:
F15848_HEKLA-SOCKET-G



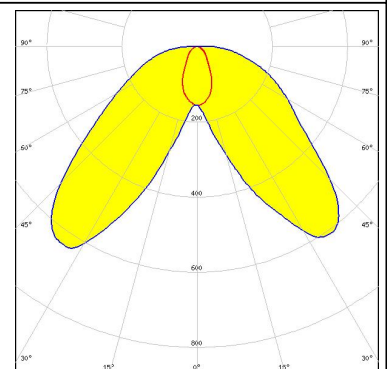
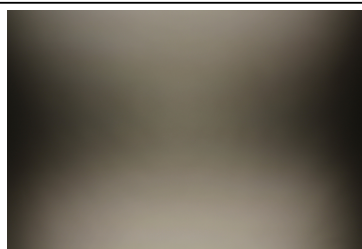
SAMSUNG

LED LC010C G2
FWHM Asymmetric
Efficiency 89 %
Peak intensity 0.850 cd/lm
LEDs/each optic 1
Light colour White
Required components:
F15255_HEKLA-SOCKET-C

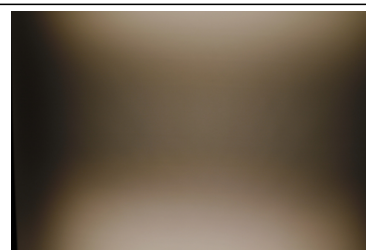
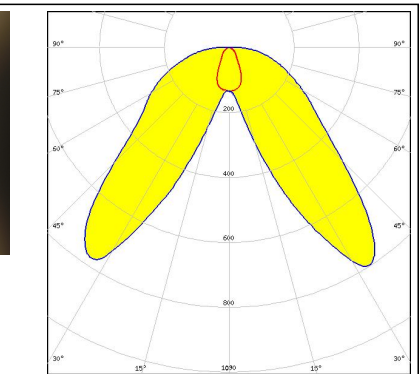

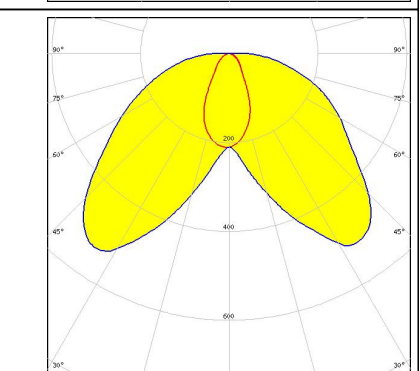
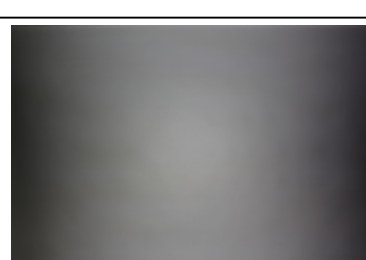
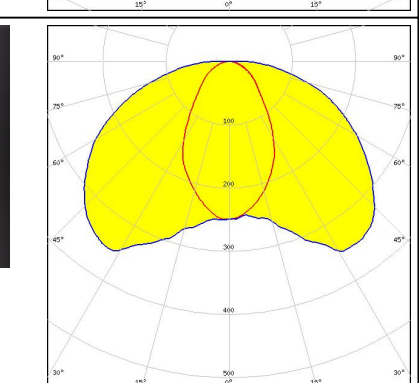

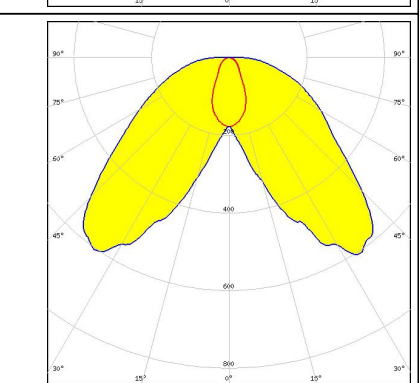


SAMSUNG

LED LC020C
FWHM Asymmetric
Efficiency 90 %
Peak intensity 0.640 cd/lm
LEDs/each optic 1
Light colour White
Required components:
F15848_HEKLA-SOCKET-G



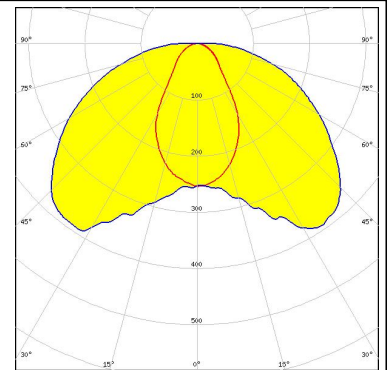
PHOTOMETRIC DATA (MEASURED):

<p>SEOUL SEMICONDUCTOR</p> <p>LED MJT COB LES 6</p> <p>FWHM Asymmetric</p> <p>Efficiency 88 %</p> <p>Peak intensity 0.800 cd/lm</p> <p>LEDs/each optic 1</p> <p>Light colour White</p> <p>Required components: F15255_HEKLA-SOCKET-C</p>		
<p>SEOUL SEMICONDUCTOR</p> <p>LED MJT COB LES 9.8</p> <p>FWHM Asymmetric</p> <p>Efficiency 87 %</p> <p>Peak intensity 0.540 cd/lm</p> <p>LEDs/each optic 1</p> <p>Light colour White</p> <p>Required components: F15255_HEKLA-SOCKET-C</p>		
<p>TRIDONIC</p> <p>LED SLE G5 LES15</p> <p>FWHM Asymmetric</p> <p>Efficiency 83 %</p> <p>Peak intensity 0.400 cd/lm</p> <p>LEDs/each optic 1</p> <p>Light colour White</p> <p>Required components: F15859_HEKLA-SOCKET-I</p>		
<p>TRIDONIC</p> <p>LED SLE G7 LES09</p> <p>FWHM Asymmetric</p> <p>Efficiency 89 %</p> <p>Peak intensity 0.610 cd/lm</p> <p>LEDs/each optic 1</p> <p>Light colour White</p> <p>Required components: F15255_HEKLA-SOCKET-C</p>		

PHOTOMETRIC DATA (MEASURED):

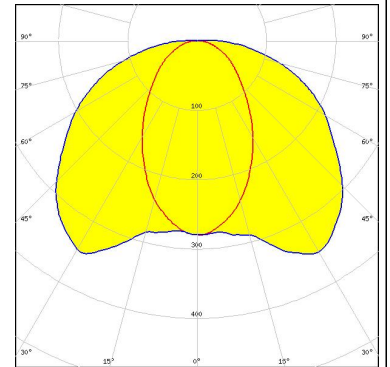
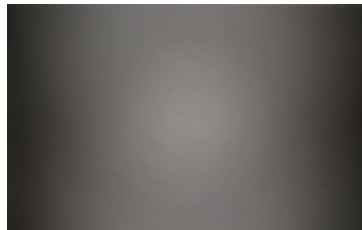
TRIDONIC

LED SLE G7 LES13
FWHM Asymmetric
Efficiency 85 %
Peak intensity 0.400 cd/lm
LEDs/each optic 1
Light colour White
Required components:
F15859_HEKLA-SOCKET-I



XICATO

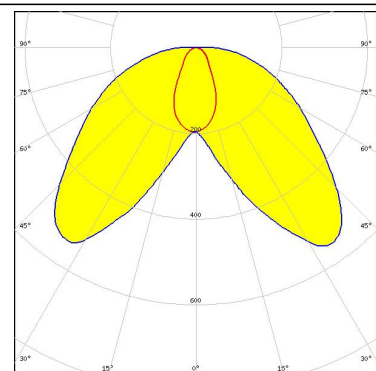
LED XTM - 19mm LES
FWHM Asymmetric
Efficiency 83 %
Peak intensity 0.350 cd/lm
LEDs/each optic 1
Light colour White
Required components:
C16058_XTM-ADAPTER-50-C



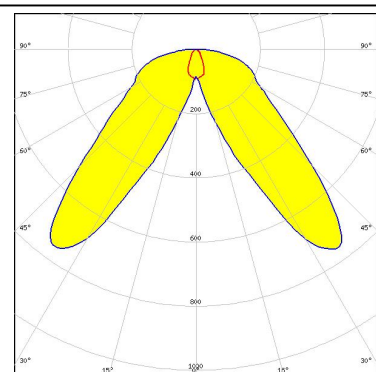
PHOTOMETRIC DATA (SIMULATED):



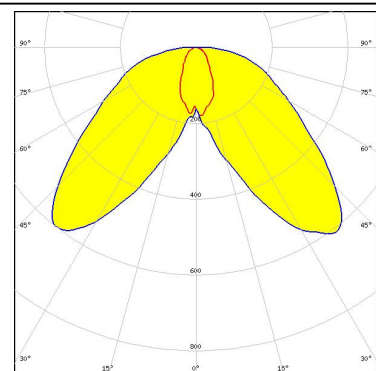
LED VERO10
FWHM Asymmetric
Efficiency %
Peak intensity cd/lm
LEDs/each optic 1
Light colour White
Required components:
F15616_HEKLA-SOCKET-F



LED COB T-Type
FWHM Asymmetric
Efficiency 84 %
Peak intensity 0.760 cd/lm
LEDs/each optic 1
Light colour White
Required components:
F15848_HEKLA-SOCKET-G



LED SLE G6 LES10
FWHM Asymmetric
Efficiency 93 %
Peak intensity 0.610 cd/lm
LEDs/each optic 1
Light colour White
Required components:
F15255_HEKLA-SOCKET-C



GENERAL INFORMATION:

NOTE: The typical beam angle will be changed by different color, chip size and chip position tolerance. The typical total beam angle is the full angle measured where the luminous intensity is half of the peak value.

Due to use of high power COB's with this product, special attention to proper thermal design is highly recommended. LEDiL has no liability for direct, indirect or consecutive damages arising from the LEDiL products being used outside of the recommended temperature range.

MATERIALS:

As part of our continuous research and improvement processes, and to ensure the best possible quality and availability of our products, LEDiL reserves the right to change material grades without notice.

PRODUCT DATA USER AGREEMENT AND DISCLAIMER:

The measured data in the provided downloadable LEDiL Product Datasheets and Mechanical 2D-Drawings is rounded and provided as reference for planning. LEDiL Oy's optical specifications have been verified by conducting performance testing of the products in accordance with the company's quality system. The reported data are averaged results of multiple measurements with typical variation. LEDiL Oy reserves the right to without prior notification make changes and improvements to its products.

LEDiL Oy assumes neither warranty, nor guarantee nor any other liability of any kind for the contents and correctness of the provided data. The provided data has been generated with highest diligence but the provided data may in reality not represent the complete possible variation range of all intrinsic parameters. Therefore, in certain cases a deviation from the provided data could occur.

LEDiL Oy reserves the right to undertake technical changes of its products without further notification which could lead to changes in the provided data. LEDiL Oy assumes no liability of any kind for the possible deviation from any provided data or any other damage resulting from the usage of the provided data.

The user agrees to this disclaimer and user agreement with the download or usage of the provided files.

LEDiL Oy

Joensuunkatu 13
FI-24240 SALO
Finland

LEDiL Inc.

228 West Page Street
Suite D
Sycamore IL 60178
USA

Local sales and technical support

[www.ledil.com/
where_to_buy](http://www.ledil.com/where_to_buy)

Shipping locations

Salo, Finland
Hong Kong, China

Distribution Partners

[www.ledil.com/
where_to_buy](http://www.ledil.com/where_to_buy)