

## TINA3-W

~40° wide beam optimized for CREE XP-E.  
Assembly with holder, installation tape and  
location pins.

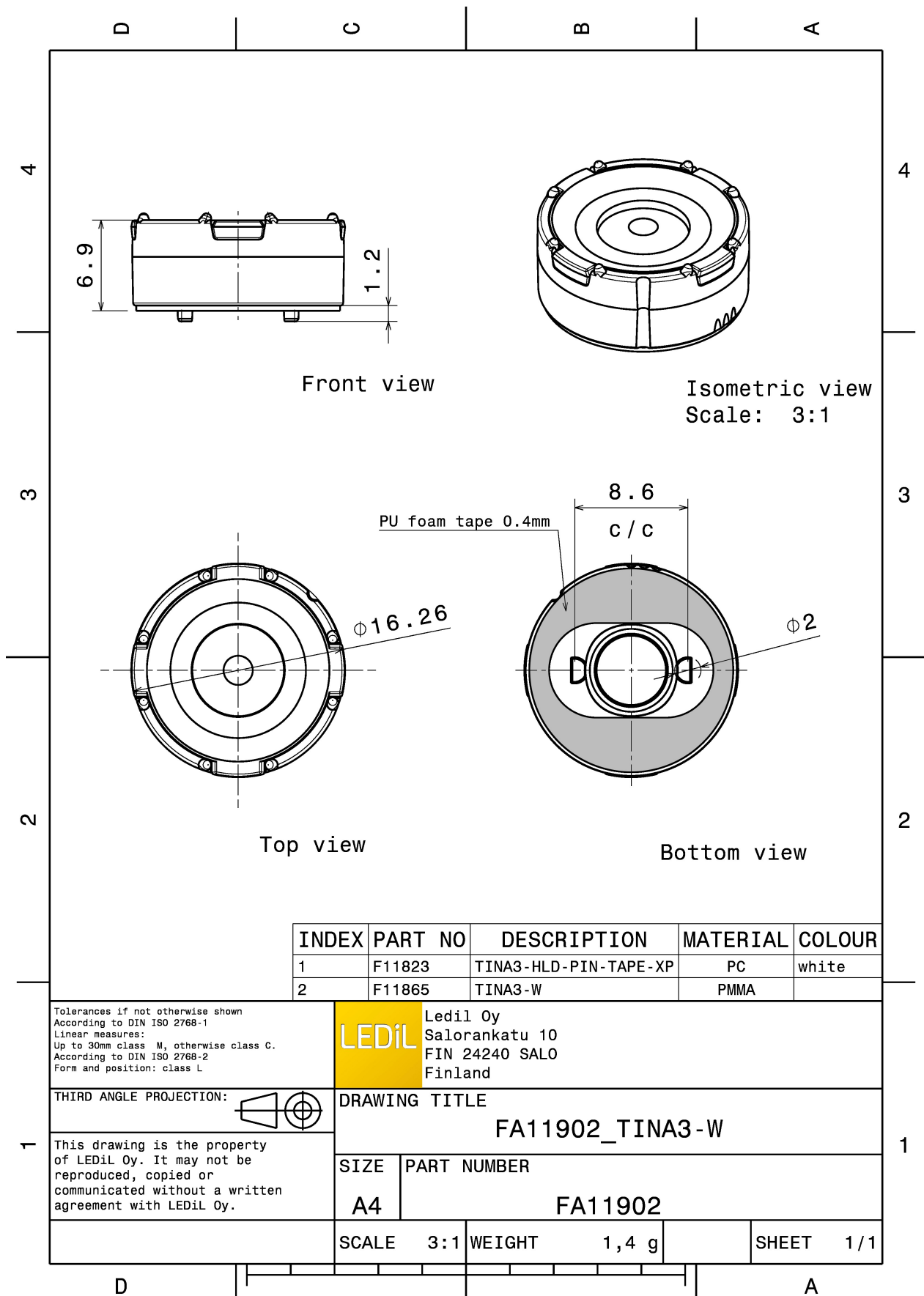
### TECHNICAL SPECIFICATIONS:

|                 |                    |
|-----------------|--------------------|
| Dimensions      | Ø 16.1 mm          |
| Height          | 7.3 mm             |
| Fastening       | tape, pin          |
| Colour          | white              |
| Box size        | 470 x 240 x 105 mm |
| Box weight      | 3.5 kg             |
| Quantity in Box | 2016 pcs           |
| ROHS compliant  | yes ⓘ              |



### MATERIAL SPECIFICATIONS:

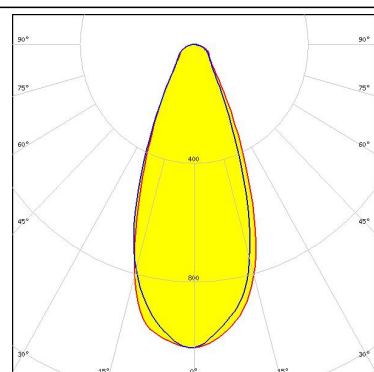
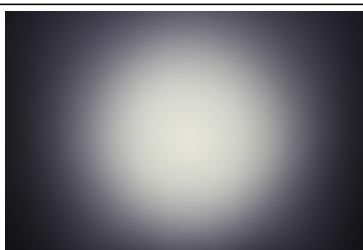
| Component             | Type        | Material | Colour |
|-----------------------|-------------|----------|--------|
| TINA3-W               | Single lens | PMMA     | clear  |
| TINA3-HLD-PIN-TAPE-XP | Holder      | PC       | white  |
| TINA-TAPE3            | Tape        | PU tape  | black  |



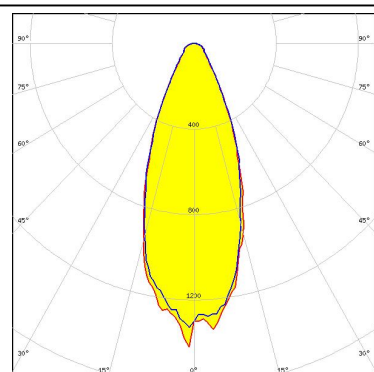
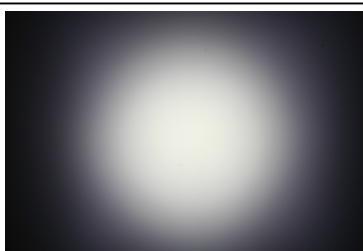
### PHOTOMETRIC DATA (MEASURED):



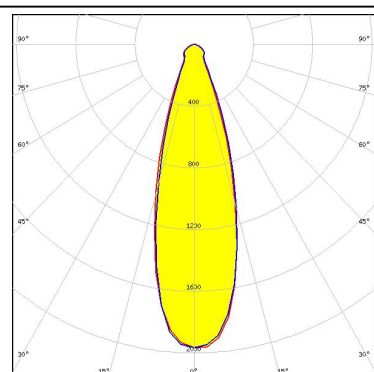
LED XM-L  
FWHM 43.0°  
Efficiency 94 %  
Peak intensity 1.000 cd/lm  
LEDs/each optic 1  
Light colour White  
Required components:



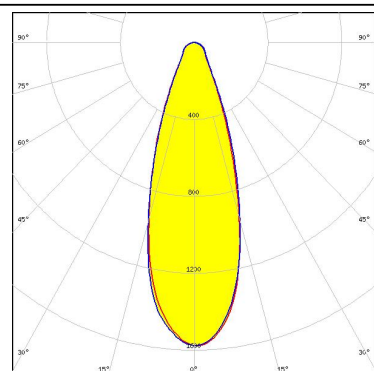
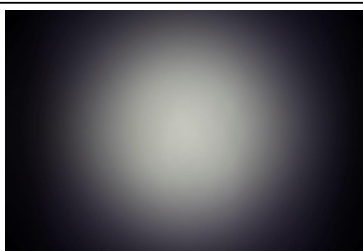
LED XM-L2  
FWHM 38.0°  
Efficiency 91 %  
Peak intensity 0.000 cd/lm  
LEDs/each optic 1  
Light colour White  
Required components:



LED XP-G2  
FWHM 32.0°  
Efficiency 89 %  
Peak intensity 2.000 cd/lm  
LEDs/each optic 1  
Light colour White  
Required components:



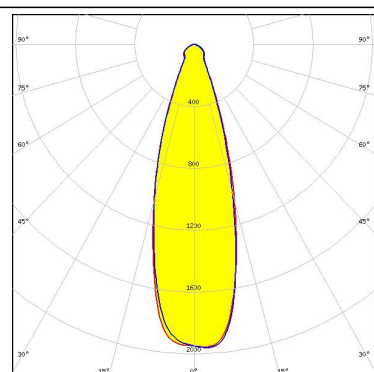
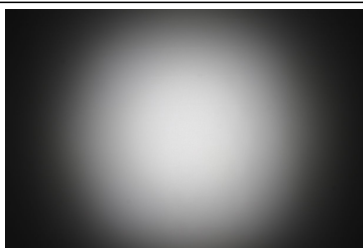
LED XP-L HD  
FWHM 34.0°  
Efficiency 89 %  
Peak intensity 1.570 cd/lm  
LEDs/each optic 1  
Light colour White  
Required components:



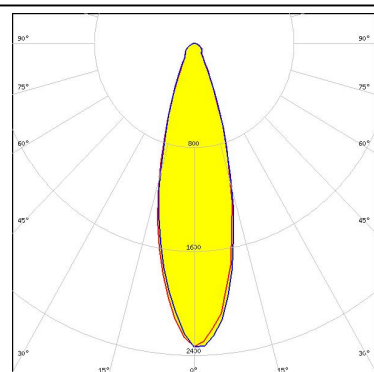
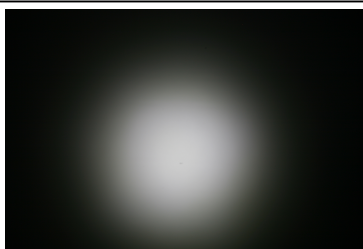
### PHOTOMETRIC DATA (MEASURED):



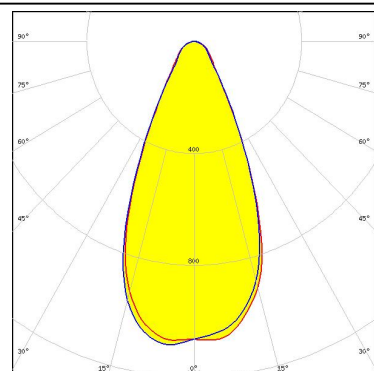
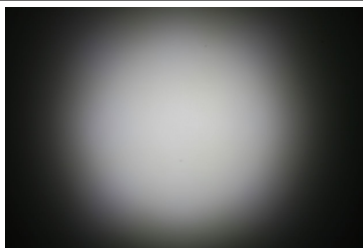
LED XP-L HI  
FWHM 31.0°  
Efficiency 91 %  
Peak intensity 2.000 cd/lm  
LEDs/each optic 1  
Light colour White  
Required components:



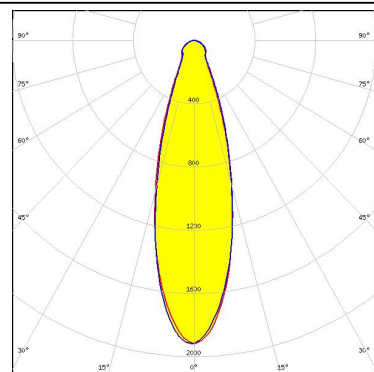
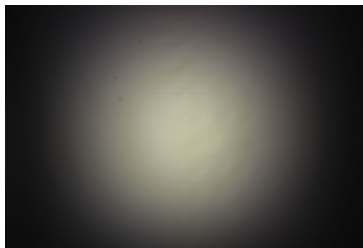
LED XT-E  
FWHM 30.0°  
Efficiency 92 %  
Peak intensity 2.300 cd/lm  
LEDs/each optic 1  
Light colour White  
Required components:



LED NS9x383  
FWHM 48.0°  
Efficiency 90 %  
Peak intensity 1.100 cd/lm  
LEDs/each optic 1  
Light colour White  
Required components:



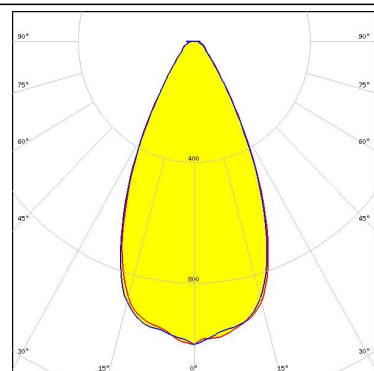
LED NVSU333A  
FWHM 30.0°  
Efficiency 94 %  
Peak intensity 1.900 cd/lm  
LEDs/each optic 1  
Light colour White  
Required components:



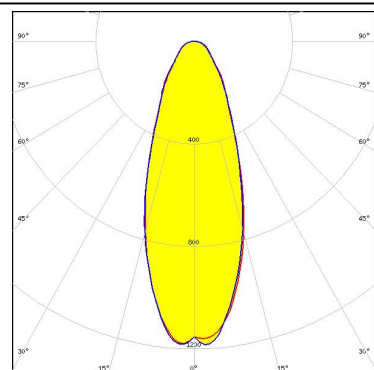
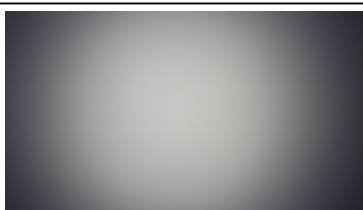
### PHOTOMETRIC DATA (SIMULATED):



LED XD16  
FWHM 52.0°  
Efficiency 90 %  
Peak intensity 1.000 cd/lm  
LEDs/each optic 4  
Light colour White  
Required components:



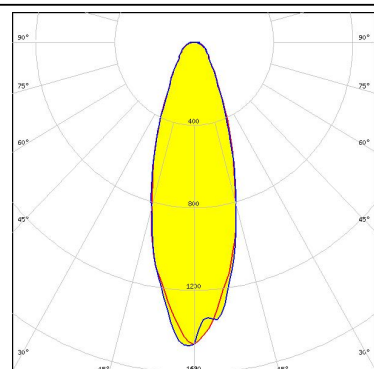
LED XHP35 HD  
FWHM 38.0°  
Efficiency 90 %  
Peak intensity 1.200 cd/lm  
LEDs/each optic 1  
Light colour White  
Required components:



LED XM-L HVW  
FWHM 50.0°  
Efficiency %  
Peak intensity cd/lm  
LEDs/each optic 1  
Light colour White  
Required components:



LED XP-G3  
FWHM 33.0°  
Efficiency 90 %  
Peak intensity 1.500 cd/lm  
LEDs/each optic 1  
Light colour White  
Required components:



## PHOTOMETRIC DATA (SIMULATED):

**OSRAM**  
Opto Semiconductors

|                      |              |
|----------------------|--------------|
| LED                  | OSLON SSL 80 |
| FWHM                 | 20.0°        |
| Efficiency           | %            |
| Peak intensity       | cd/lm        |
| LEDs/each optic      | 1            |
| Light colour         | White        |
| Required components: |              |

### GENERAL INFORMATION:

NOTE: The typical beam angle will be changed by different color, chip size and chip position tolerance. The typical total beam angle is the full angle measured where the luminous intensity is half of the peak value.

### MATERIALS:

As part of our continuous research and improvement processes, and to ensure the best possible quality and availability of our products, LEDiL reserves the right to change material grades without notice.

### PRODUCT DATA USER AGREEMENT AND DISCLAIMER:

The measured data in the provided downloadable LEDiL Product Datasheets and Mechanical 2D-Drawings is rounded and provided as reference for planning. LEDiL Oy's optical specifications have been verified by conducting performance testing of the products in accordance with the company's quality system. The reported data are averaged results of multiple measurements with typical variation. LEDiL Oy reserves the right to without prior notification make changes and improvements to its products.

LEDiL Oy assumes neither warranty, nor guarantee nor any other liability of any kind for the contents and correctness of the provided data. The provided data has been generated with highest diligence but the provided data may in reality not represent the complete possible variation range of all intrinsic parameters. Therefore, in certain cases a deviation from the provided data could occur.

LEDiL Oy reserves the right to undertake technical changes of its products without further notification which could lead to changes in the provided data. LEDiL Oy assumes no liability of any kind for the possible deviation from any provided data or any other damage resulting from the usage of the provided data.

The user agrees to this disclaimer and user agreement with the download or usage of the provided files.

#### LEDiL Oy

Joensuunkatu 13  
FI-24240 SALO  
Finland

#### LEDiL Inc.

228 West Page Street  
Suite D  
Sycamore IL 60178  
USA

#### Local sales and technical support

[www.ledil.com/  
where\\_to\\_buy](http://www.ledil.com/where_to_buy)

#### Shipping locations

Salo, Finland  
Hong Kong, China

#### Distribution Partners

[www.ledil.com/  
where\\_to\\_buy](http://www.ledil.com/where_to_buy)