
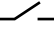

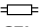

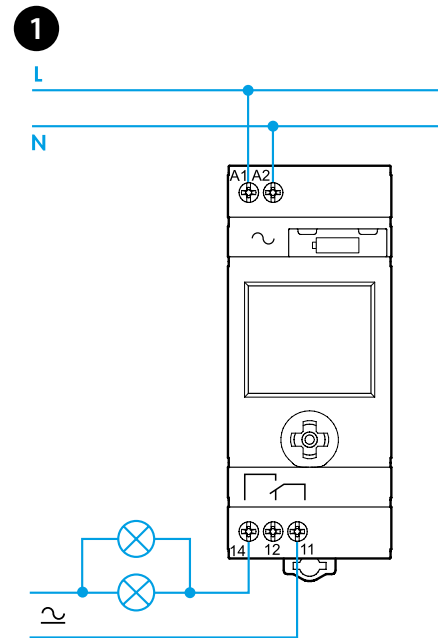
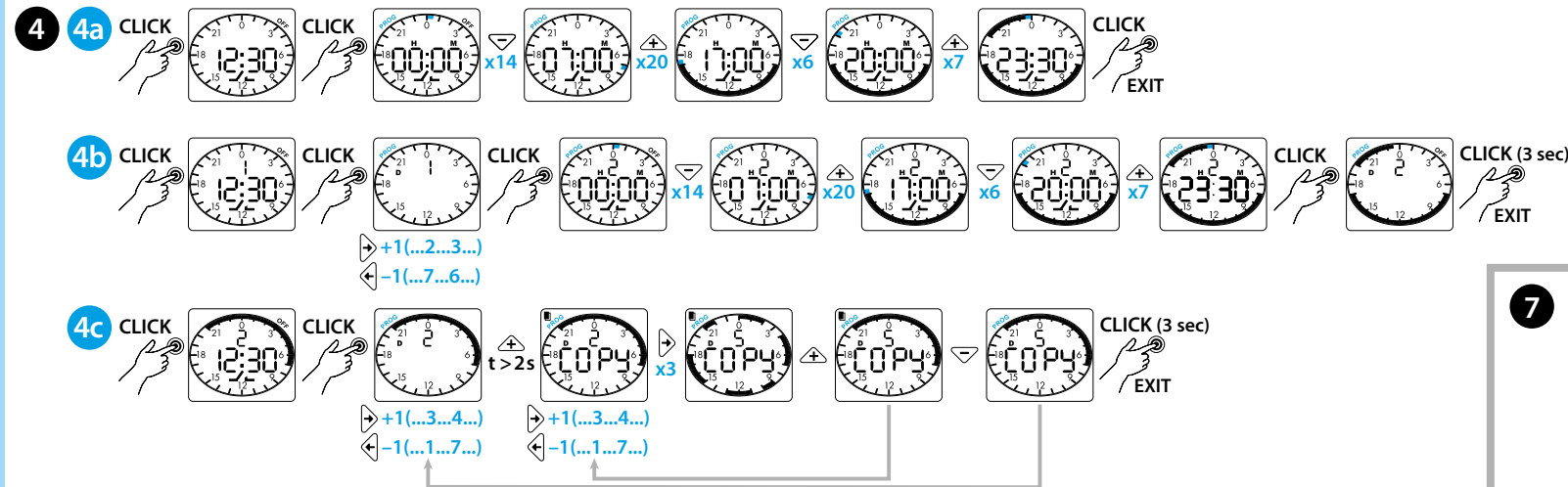
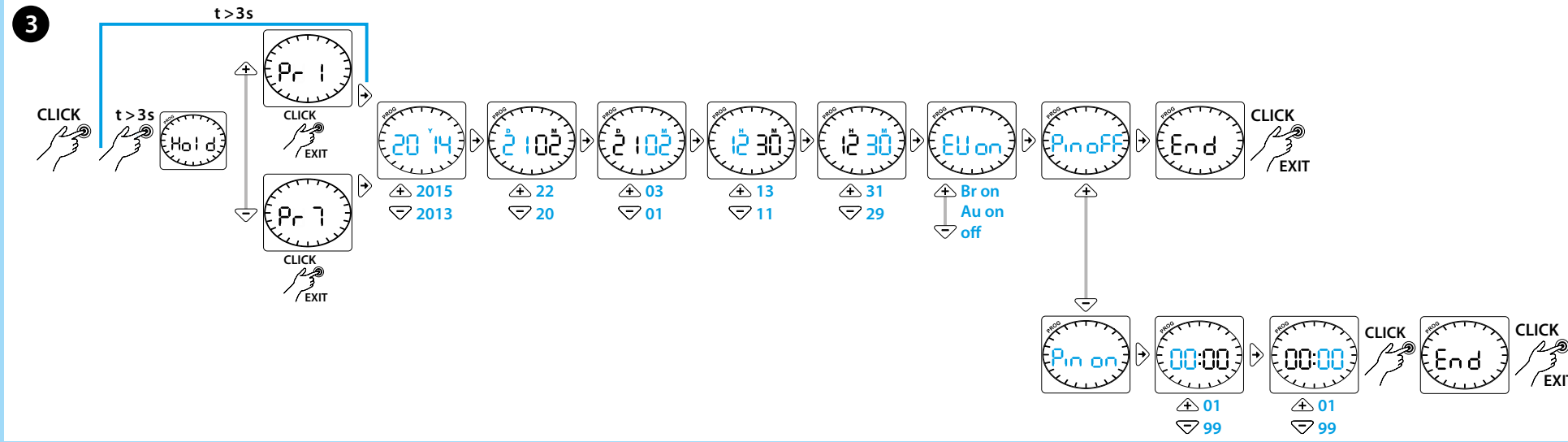
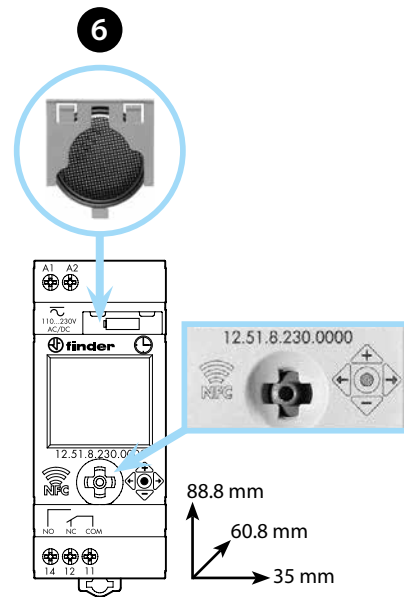
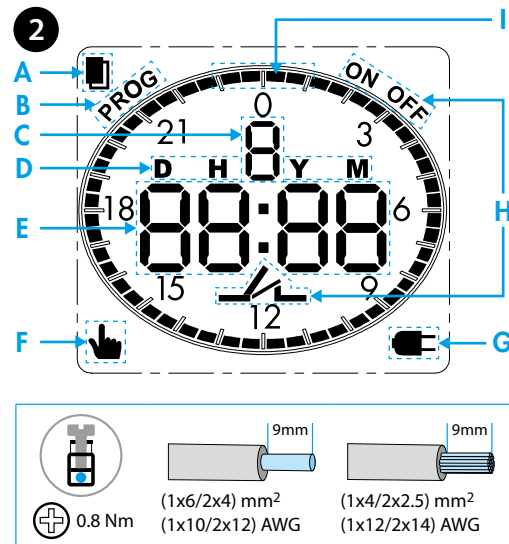


12.51

EN 60669 - 1 / EN 60669 - 2 - 1	
	12.51.8.230.0000 U <sub>N</sub> 110...230 V AC (50/60 Hz) / DC U <sub>min</sub> 90 V AC / DC U <sub>max</sub> 264 V AC / DC P 2.8 VA (50 Hz) / 0.9 W
	1 CO (SPDT) 16 A 250 V AC
	AC1 4000 VA AC15 (230 V AC) 750 VA
	 (230 V) 2000 W  (230 V) 750 W CFL - LED (230 V) 400 W
	(-20...+50)°C
IP20	



Utility Model - IB1251001 - 03/17 - FINDER S.p.A. - 10040 ALMESE (TO) - ITALY



## ENGLISH

### 12.51 DIGITAL TIME SWITCH DAILY/WEEKLY PROGRAMMING

#### 1 WIRING DIAGRAM

#### 2 DISPLAY LEGEND

- A COPY function
- B Programming
- C Day of the week (1 = MON ... 7 = SUN)
- D = day - H = hour - Y = year - M = minutes / month
- E PIN - Pr = year - day - month - hour - minutes - summer time - END
- F MANUAL mode
- G Time switch without power supply. Powered by battery
- H Current contact state
- I Current state / programming of the segments  
■ black square - □ white square=OFF

#### 3 SETTINGS (example)

Push the joystick to activate the display. Push >3s to display Pr.

Using the joystick set the following data:

- Pr1: DAILY program
- Pr7: WEEKLY program
- Y = year - D = day - M = month - H = hour - M = minutes
- Summer time: automatic change with EU(Europe) / Br(Brazil) / Au(Australia) ON
- PIN OFF / PIN ON (on PIN ON set a number to lock/unlock the timer)

#### 4 PROGRAMMING (examples)

- 4a DAILY program: push the joystick to activate the display. Push it again to view the hour 00:00. Use the joystick to set the program required.  
Example: (ON from 07:00 to 17:00)/(ON from 20:00 to 23:30)
- 4b WEEKLY program: push the joystick to activate the display. Push it again to view the current day. Use the joystick to first select appropriate day, and then set the program required. Example: Tuesday (ON from 07:00 to 17:00) / (ON from 20:00 to 23:30). Repeat for other days.
- 4c COPY Function: push the joystick to activate the display. Push again to view the current day, and then select the day to be copied. Copy by pulling the joystick to the + symbol. Then select the day to which the program is to be pasted, and then press the joystick to the - symbol to paste program.  
To exit, pull the joystick to the - symbol and then press it.  
[example: copy Tuesday (2) program into Thursday (5)].

#### 5 SETTING MANUAL MODE

- 5a Push the joystick to activate the display.  
Push it towards the + symbol for 2 seconds to activate **manual ON** (fig.1).  
To deactivate, push the joystick towards the - symbol for 2 seconds (fig.2).
- 5b Push the joystick to activate the display.  
Push it towards the - symbol for 2 seconds to activate **manual OFF** (fig.1).  
To deactivate, push the joystick towards the + symbol for 2 seconds (fig.2).

#### 6 Battery replacement

BATTERY CR 2032 (LiMnO<sub>2</sub>) 3V, 230mAh.  
Complies with Article 11, EU directive 2006/66/CE.  
Dispose of batteries according to local regulations.

#### NOTE

- Back-light display (only with power supply)
- Minimum switching interval: 30 min
- Power back-up (Battery life): 6 years

7 Programmable with NFC technology by the App **FINDER TOOLBOX** downloaded from Google Play™.