

### SWT(E)L-(BZ) / SWT(E)LF-(BZ)

#### OPERATING MANUAL

#### Wall mounting LED Semi Cylinder Tower Light

Thank you for purchasing Q.Light product. Please read this manual carefully before installing this product for safe and long use.

- SWTL/ SWTEL LED Steady
- SWTLF/ SWTELF LED Steady/Flashing
- SWTL-BZ/ SWTEL-BZ LED Steady with Buzzer
- SWTLF-BZ/ SWTELF-BZ LED Steady/Flashing with BZ

#### 1 Product Feature

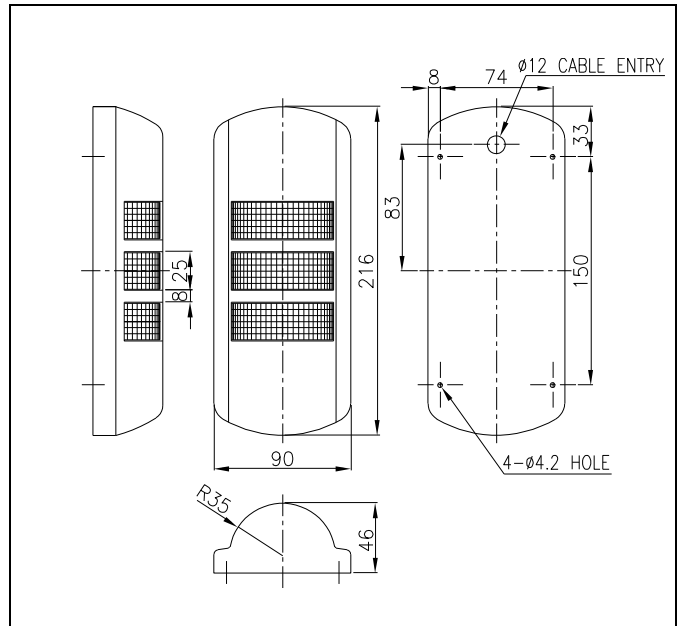
- Easily attached to walls as wall mounting product and reduced in the risk of damage from touching by obstacle.
- SWT(E)L / SWT(E)LF-BZ type has an elegant appearance with vacuum planting.
- Radiating LED light directly towards product user, ensuring high visibility.
- Radiating clear signal light by using the light diffusion filter inside the transparent lens.
- Possible to be used outdoor with water and dust proof structure ensuring high airtightness.
- In case of 2 layers, lens of the center portion is replaced by frosted filter
- Material  
Cover-ABS  
Lens, Filter-PC
- Flashes : 60~80/min.
- Built in buzzer type volume: Max.90dB/m
- Protection class : IP55, possible to use outdoor

#### 2 Specification & External View Drawing

- Specification-SWT(E)L, SWT(E)LF, SWT(E)L-BZ, SWTL(E)F-BZ

Type	Layer	Voltage	Current	Weight	Color
SWT(E)L SWT(E)L-BZ	2	AC/DC12V	0.095A	0.27Kg	Red-R Green-G
		AC/DC24V	0.063A	0.27Kg	
		AC110V	0.048A	0.44Kg	
		AC220V	0.024A	0.44Kg	
SWT(E)LF SWT(E)LF-BZ	3	AC/DC12V	0.130A	0.29Kg	Red-R Amber-A Green-G
		AC/DC24V	0.085A	0.29Kg	
		AC110V	0.051A	0.46Kg	
		AC220V	0.025A	0.46Kg	

#### External view drawing



#### 3 Wiring Instruction

Power lines and signal lines come out from the product. Please connect them correctly after referring to below instruction.

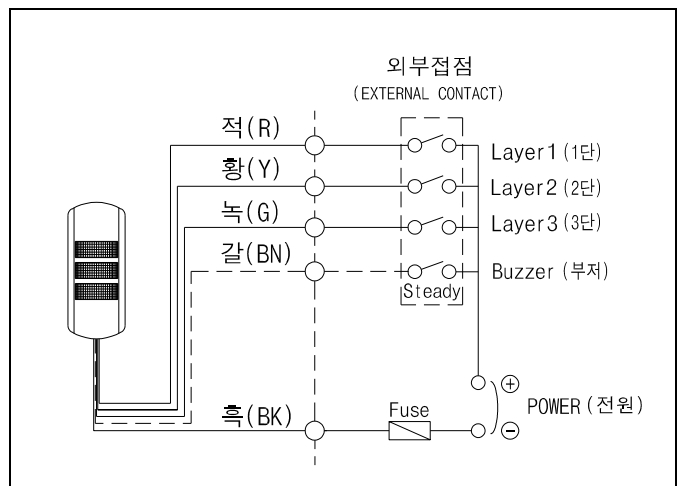
##### ■ DC Steady type :

- Power line & Signal line out from the product UL1007-NO.22(0.3sq) 400mm

##### ■ DC, AC Steady/Flashing type:

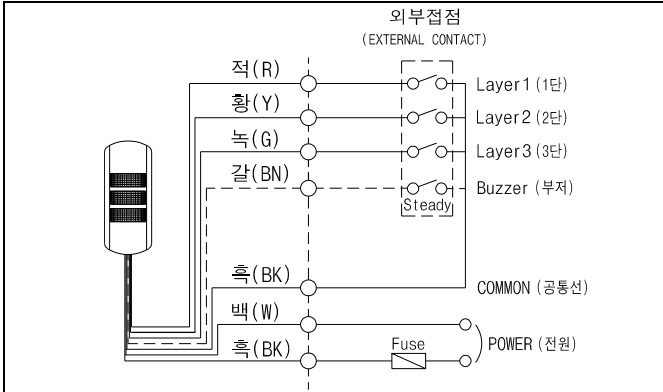
- Power line & Signal line out from the product UL1015-NO.18(0.75sq) X 2C 400mm

- AC Product : Please connect without polarity
- DC Product : Black line is negative (-)



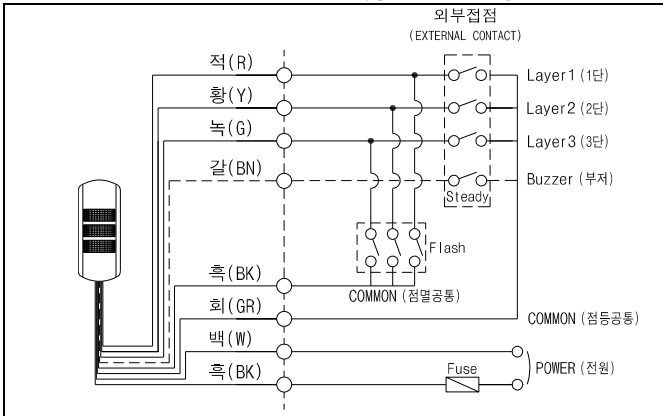
► **Connection Diagram (Steady/Flashing-AC)**

SWTL-AC, SWTEL-AC Type. (including built in BZ)



► **Connection Diagram (Steady/Flashing-DC/AC)**

SWTL(F)-AC, SWTEL(F)-AC Type. (including built in BZ)



- When mounting, please kindly refer to below instruction to attach.
- This product was manufactured with the structure for outdoor use. Please mount it at the place where exists low vibration, low impact, low moisture and low dust as long as possible. Mounting also should be done only on the vertical standing direction.
- Please make a hole by a drill where you need to attach our product and refer to below picture for a hole size. (Make sure PCD from external view drawing.)
- Release the body① and cover② with a screw driver, then assemble the product on the holes with M4 bolts③. After this, please connect nuts and washers.
- Insert the cover④ first then push ⑤ to attach well.

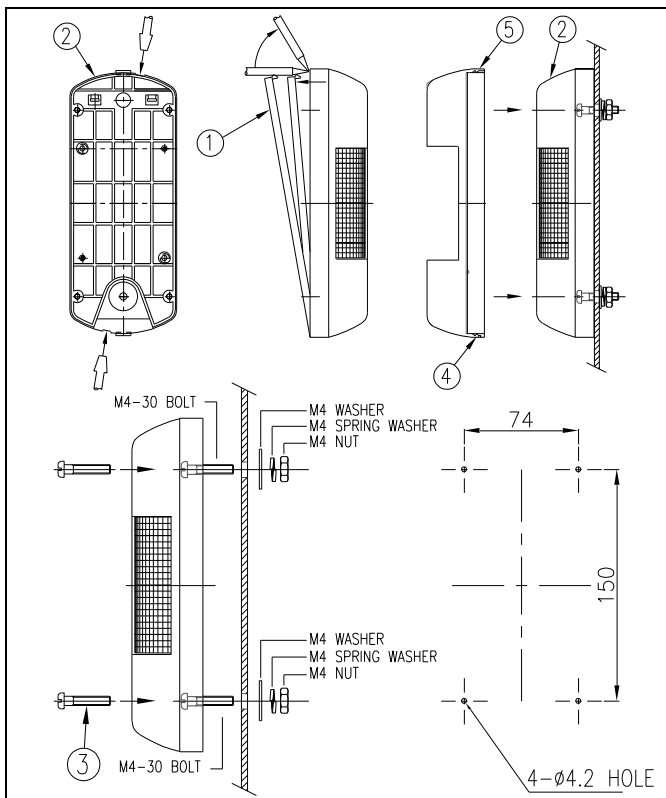
**5 Caution**

- If using voltage is seriously higher or lower than rated voltage, it can reduce the self-life of the product or can cause a problem on product operating. Make sure the using voltage does not exceed  $\pm 5\%$  of the rated voltage.
- If lens or body of the product is contaminated by chemicals such as thinner, benzene, the product can be damaged, discolored or deformed. Please be careful.
- Do not give strong impact to the product. It can be a reason of wire disconnection or short circuit.
- Do not strongly pull the wire out from the product. It can cause a disorder.

**6 Trouble shooting**

Situation	Main reason	Solution
Non- Lighting Partly	LED is partly damaged, supplying higher voltage then rated voltage.	Making Sure Using Voltage
Feeble Lighting	Supplying Voltage Lower Than Rated Voltage	Making Sure Using Voltage
Lighting but Non-Flashing	Wrong Wiring	Making Sure Wiring
Neither Lighting nor Flashing	Wrong Wiring	Making Sure Wiring

**4 Mounting**



— For A/S & Information on Product

**Q-LIGHT CO., LTD.**

<http://www.qlightkr.com>

E-mail : [qlightkr@qlightkr.com](mailto:qlightkr@qlightkr.com)

**Overseas Marketing Team /Plant**

Tel) 055-328-4082 Fax) 055-328-4083

178-1 Woogyae-Ri, Sangdong-Myun, Kimhae-Si,  
KyungNam, Korea