

S100S / S125S

OPERATING MANUAL

Xenon Lamp Strobe Light

Thank you for purchasing QLight product. Please read this manual carefully before installing this product for safe and long use.

1 Product Feature

- Suitable for a bright place and a signal transfer for a long distance with a strong strobe signal light.
- Easy to change its lamp by taking a connector type lamp.
- Material : Lens-AS, Body-ABS
- Flashes : 60~80/Min.(Continuous flashing of 2 times)
- Protection Class : IP54

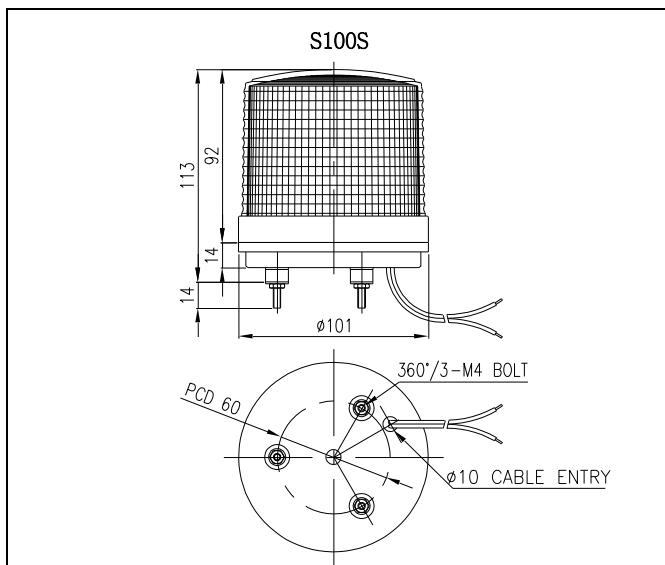
2 Specification & External View Drawing

1) S100S

▪ General Specification

Model	Rated Voltage	Current	Weight	Flashes	Color
S100S	DC12V	1.001A	0.25Kg	60~80/min.	RED-R AMBER-A GREEN-G BLUE-B
	DC24V	0.616A	0.25Kg		
	AC110V	0.133A	0.25Kg		
	AC220V	0.106A	0.25Kg		

▪ External View Drawing

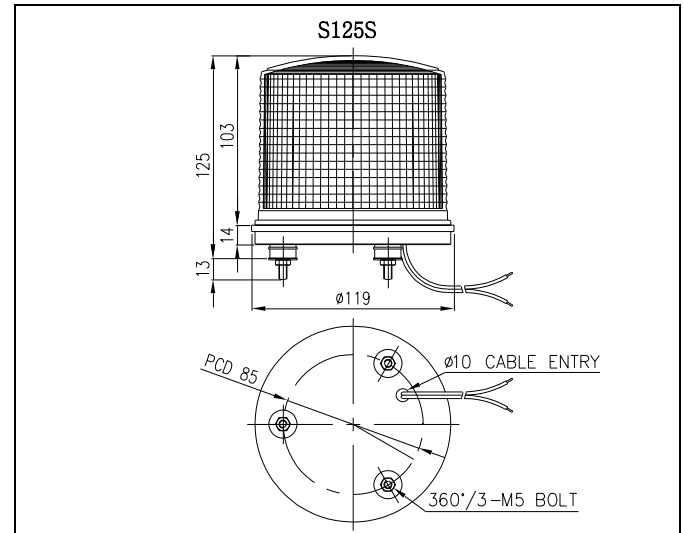


2) S125S

▪ General Specification

Model	Rated Voltage	Current	Weight	Flashes	Color
S125S	DC12V	1.001A	0.25Kg	60~80/min.	RED-R AMBER-A GREEN-G BLUE-B
	DC24V	0.616A	0.25Kg		
	AC110V	0.133A	0.25Kg		
	AC220V	0.106A	0.25Kg		

▪ External View Drawing

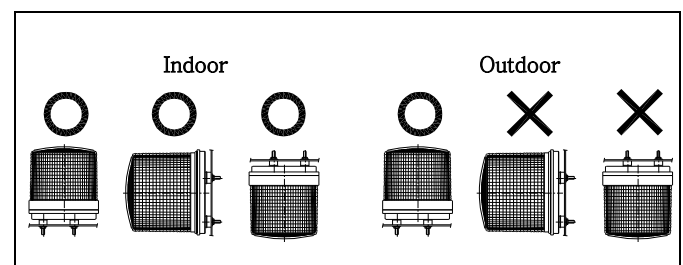


3 Wiring Instruction

Power line UL1015-NO.18(0.75sq) x 2C 400mm comes out from the product.

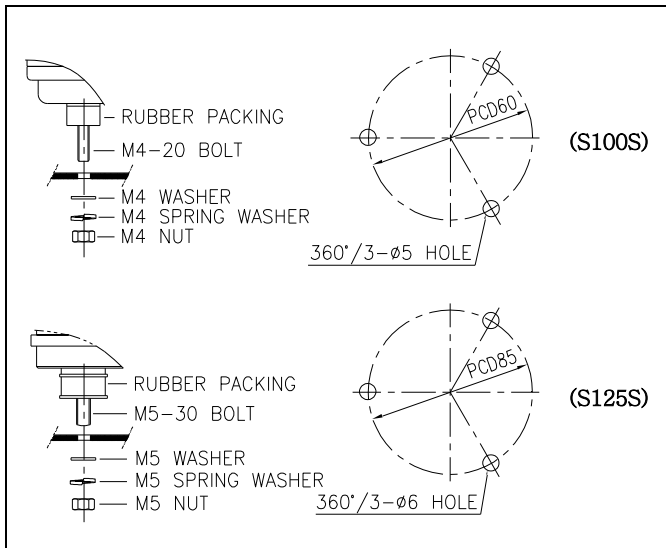
- In case of product using AC voltage, connect the line without Polarity(wire color).
- In case of product using DC voltage, black line is negative(-).

4 Mounting



- This product was manufactured with the structure for indoor use. Installing in any direction is okay for indoor use.
- Outdoor use is limited at a place where no water or very little water percolates. Mounting also should be done only on the vertical standing direction.
- Mount at the place where exists low vibration, low impact, low moisture and low dust as long as possible.

- Please make a hole by a drill where you need to attach our product and refer to below picture for a hole size. (Make sure PCD from external view drawing.)
- S100S : Fix the product by using nuts(M4-3EA) originally equipped on mounting bolt on bottom of the product.
- S125S : Fix the product by using nuts(M5-3EA) originally equipped on mounting bolt on bottom of the product.



5 Bulb change

1) ※ Warning!

Must turn off power supply and change bulb after 1 minute at least.

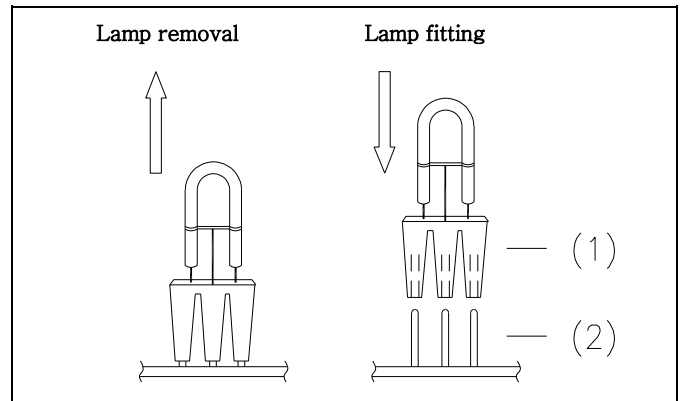
- Xenon lamp emits superheat when working. Please be aware you should not touch bulb before lowering its heat prevent from a burn.
- Xenon lamp work with a high voltage, if you touch a assembling board or lamp without power-off, you may receive an electric shock.

2) Lens Removal

Remove lens by turning it counterclockwise. Please make sure the lamp on the assembling board and Steady/Flashing selection switch.

3) Change Lamp

- Our company's xenon lamp (1) is made as a connector type lamp. If you pull out with a small strength, it can be separated easily.
- Please fit the lamp by checking a connector pin location (2) as below picture.



4) Lens Assembling

Assemble the product in reverse order of separating.

6 Caution

- If using voltage is seriously higher or lower than rated voltage, it can reduce the self-life of the product or can cause a problem on product operating. Make sure the using voltage does not exceed $\pm 5\%$ of the rated voltage.
- If lens or body of the product is contaminated by chemicals such as thinner, benzene, the product can be damaged, discolored or deformed. Please be careful.
- Do not give strong impact to the product. It can be a reason of wire disconnection or short circuit.
- Do not strongly pull the wire out from the product. It can cause a disorder.

7 Troubleshooting

Situation	Main reason	Solution
Lamp non-working	Damage on Lamp	Change lamp
	Lamp connector badness	Re-connecting lamp connector
	No Power Supply	Making sure power supply
Strobe working irregularly.	Supplying voltage lower than rated voltage	Making sure using voltage

■ Inquiry for Product and C/S

QLIGHT CO., LTD.

<http://www.qlight.com>

E-mail : trade@qlight.com

Overseas Sales Team / Factory

Tel) +82-55-328-4082 Fax) +82-55-328-3883

185-25 Mukbang-ro Sangdong-Myeon, Gimhae-Si,