

S100R / S100UR / S100U / S100UA

OPERATING MANUAL

Bulb Revolving Warning Light

Thank you for purchasing QLight product. Please read this manual carefully before installing this product for safe and long use.

1 Product Feature

- A patented special power transmission system makes superior durability of revolving and minimize noise and wear
- The vacuum coated reflector has a fine light diffusing effectiveness
- Buzzer volume(optional): Max 90dB/m
- RPM: 120~140RPM. (Controllable)
- Material: Lens- AS, Body- ABS, Reflector- Thermostable ABS
- Protection Class: IP44

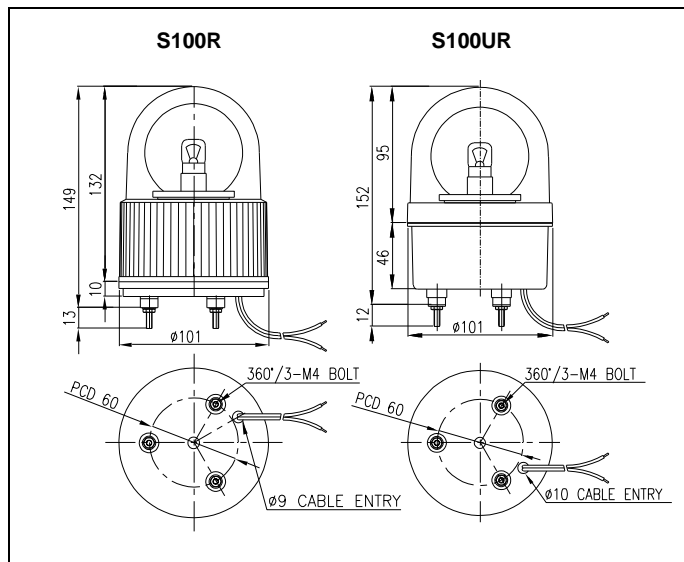
2 Specification & External View Drawing

1) S100R / S100UR

• General Specification

Model	Voltage	Current	Bulb		Weight	Color
S100R	DC12V	0.966A	12V10W	T16x35 15S	9	RED-R
	DC24V	0.566A	24V10W	T16x35 15S	10	AMBER-A
S100UR	AC110V	0.130A	12V10W	T16x35 15S	9	GREEN-G
	AC220V	0.065A	12V10W	T16x35 15S	9	BLUE-B

• External View Drawing

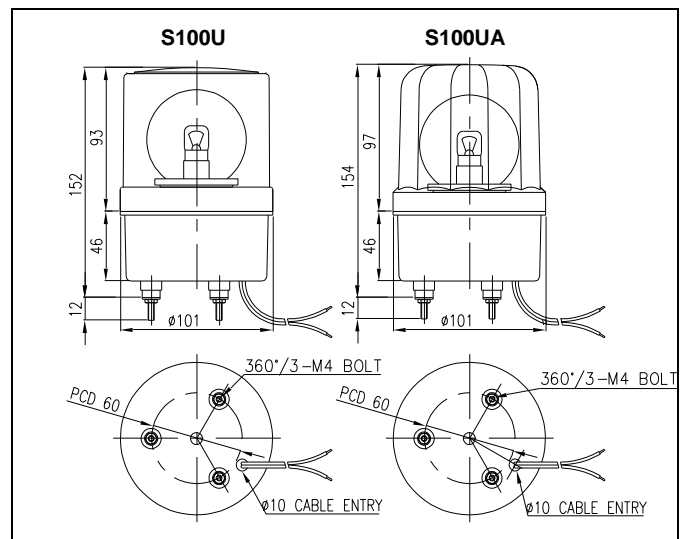


2) S100U / S100UA

• General Specification

Model	Voltage	Current	Bulb		Weight	Color
S100U	DC12V	0.966A	12V10W	T16x35 15S	9	RED-R
	DC24V	0.566A	24V10W	T16x35 15S	10	AMBER-A
S100UA	AC110V	0.130A	12V10W	T16x35 15S	9	GREEN-G
	AC220V	0.065A	12V10W	T16x35 15S	9	BLUE-B

• External View Drawing

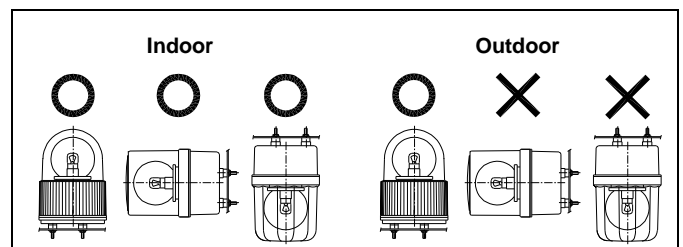


3 Wiring Instruction

Power line UL1015-NO. 18(0.75sq) x 2C 400mm comes out from the product.

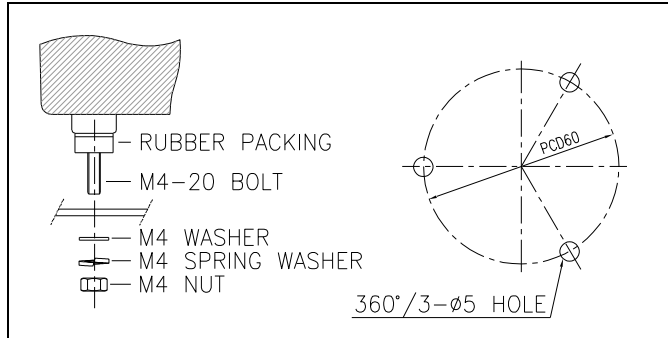
- In case of product using AC voltage, connect the line without Polarity (wire color).
- In case of product using DC voltage, black line is negative (-).

4 Mounting



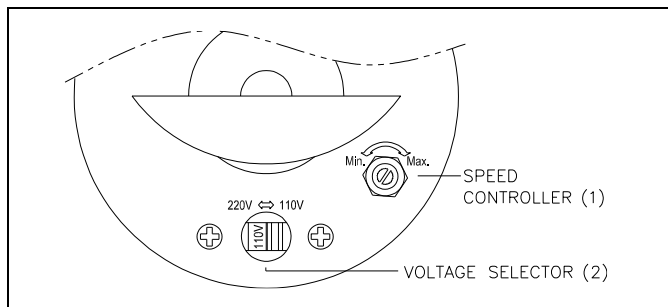
- This product is manufactured for indoor use. Installing in any direction is okay for indoor use.
- Outdoor use is limited at places where no water or very little water percolates. Mounting also should be done only on the vertical standing direction.

- Mount at the place where exists low vibration, low impact, low moisture and low dust as long as possible.
- Please drill holes where you need to attach the product and refer to picture below for the hole size. (Please check the position of PCD from external view drawing.)
- Fix the product by using nuts (M4-3EA) originally equipped on mounting bolt on the bottom of the product.



5 Voltage Selection(AC Type), Revolving Speed Control, Bulb Change

This product has VOLTAGE SELECTOR (2) to change voltages and SPEED CONTROLLER (1) to control revolving speed on an assembling board. Please kindly see drawings and explanation below carefully.



1) Lens Removal

Remove lens by turning it counterclockwise. Please make sure any related parts are on the assembling board.

2) Control the Revolving Speed

- This product built-in a volume for revolving speed control. Turn it clockwise for increasing revolving speed and turn it counterclockwise for decreasing revolving speed.
- Put too much forces, the volume may be broken. Please be careful.

3) AC Voltage Selection

- You can choose one voltage between AC110V and AC220V by using voltage selection switch (2). **The default setting is AC220V.**

※ Warning!

- Before you convert the voltage, you MUST cut off the power supply. Otherwise electricity on the wire might cause a short circuit.

4) Bulb Change

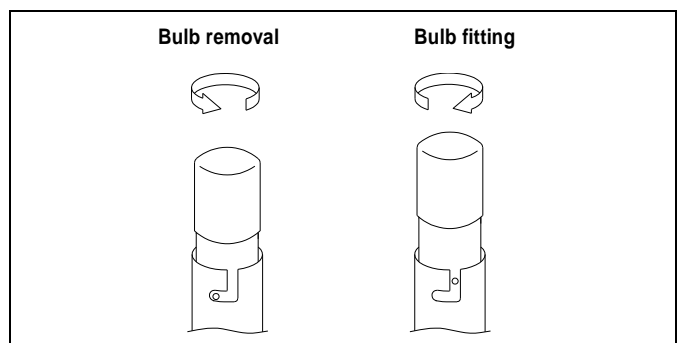
※ Warning!

If you want to replace a bulb, you MUST cut the power supply before you do it. Please leave the product turned off at least 1 minute and then change the bulb.

- Please check the rated voltage and wattage of the bulb. If the bulb gets higher voltage than the rated one, it will lead the life of product reduced and cause damage on the lens and reflector. Therefore, please use the bulb which has the same or lower rated voltage and wattage.

- Bulb Removal: Press the bulb slightly downward and turn it counterclockwise for removing.

- Bulb Fitting: Press the bulb slightly into the socket with a little pressure and turning it clockwise for fitting.



6 Caution

- If it is used with seriously higher or lower than rated voltage, it can reduce the self-life of the product or can cause a problem on the operating. Please make sure the voltage does not exceed +/-5% of the rated voltage.
- If lens or body of the product contacts to the chemicals such as thinner or benzene, the product is contaminated, discolored or deformed. Please be careful.
- Do not give strong impact on the product. It can be a reason of wire

disconnection or short circuit.

- Do not strongly pull out the wire from the product. It can cause a disorder.

7 Troubleshooting

Situation	Main reason	Solution
Partially Lighting	Wire disconnection of Bulb	Wire re-connection or Bulb Change
Feeble Lighting Low Revolving Speed	Supplying voltage Lower than rated Voltage	Check the Voltage
	Choose the wrong voltage from the selection switch (AC type)	Check the Voltage
	Wrong setting for the revolving speed	Make revolving speed higher
Short Self-Life of Bulb	Supplying voltage higher than the rated voltage	Check the voltage
Bulb overheating makes lens shape change	Using the high voltage bulb	Use the right voltage bulb
Defect of transformer (AC Voltage Type)		
Non Revolving	Problem with Motor	Contact QLight or The Agent
Neither Lighting Nor Revolving	No Power Supply	Check the power supply
	Wrong Wiring	Check the Wiring

— For A/S & Information about Product

QLIGHT CO., LTD.

<http://www.qlightkr.com>

E-mail: qlightkr@qlightkr.com

Overseas Marketing Team / Plant

Tel) 055-328-4082 Fax) 055-328-3883

185-25 Mukbang-ro Sangdong-Myun, Gimhae-Si,
Gyungsangnam-do, Korea