

品名 NAME: Din Ring	ITEM No. :	版次	記述 DESCRIPTION	DATE	核可

MAXIMUM ELECTRIC CURRENT

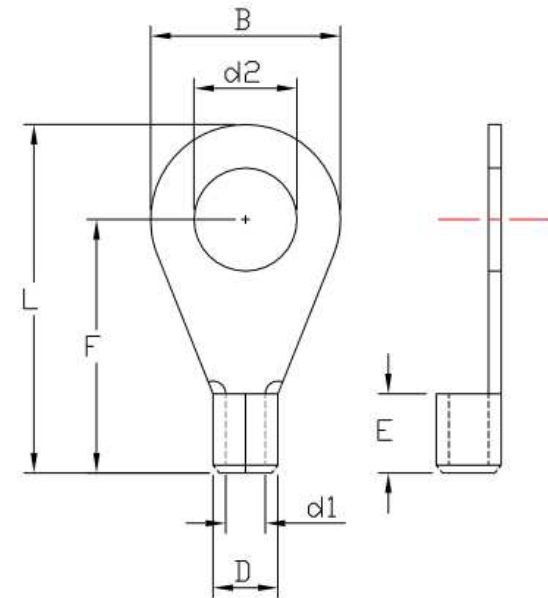
A. W. G	26	24	22
MAX AMP	5.5	7	9

NOTE: DIN 46234

1. BRAZED SEAM
2. WIRE RANGE: 26-22 AWG / 0.1-0.5 mm²
3. MATERIAL THICKNESS: t
TOLERANCE: ±0.05

B	
0-3	+0.00 -0.14
3-6	+0.00 -0.18
6-10	+0.00 -0.22
10-18	+0.00 -0.27
18-30	+0.00 -0.33
30-50	+0.00 -0.38

WIRE RANGE AWG/mm ²	ITEM NO.	d2 ±0.20	B	F ±0.25	L ±1.00	E ±0.60	D ±0.30	d1 ±0.38	t
26-22 AWG 0.1-0.5 mm ²		2.2	5.0	10.0	12.5	4.0	2.2	1.0	0.5
	ST-082/1	2.7	5.0	10.0	12.5				
		3.2	5.0	10.0	12.5				
		3.7	6.0	12.0	15.0				
		4.3	6.5	12.0	15.2				
	5.3	8.0	12.0	16.0					



認可 APPROVALS		第三視角 THIRD VIEW 	MATERIAL	單位 UNIT	日期 DATE: 2015.01.05
製圖 DRAFT:	TINA		INSULATION: NON	m/m	
設計 DESIGN:	KEN	MATERIAL: COPPER	比例 SCALE		
核可 CHECKED:	ANDY	TIN PLATING			