

U.I. Lapp GmbH	DATASHEET	
	EPIC® KIT H-BE 24 SS TG M25	75009650 07.11.2014

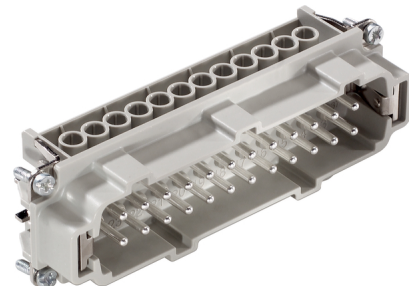
Standard inserts with screw termination, crimp termination, cage clamp termination and Push-In termination
Standard inserts with screw, crimp cage clamp and Push-In termination
The EPIC® H-BE series is suitable for applications that require a reliable connection when working with high voltages and currents



Robust



Temperature-resistant



Info

Multifunctional insert for versatile applications
Screw, crimp, cage clamp and Push-In version - freely combinable
Also as EPIC® H-BE 48 available

Application range

Mechanical engineering
Light & sound technology
Plastics industry

Remark

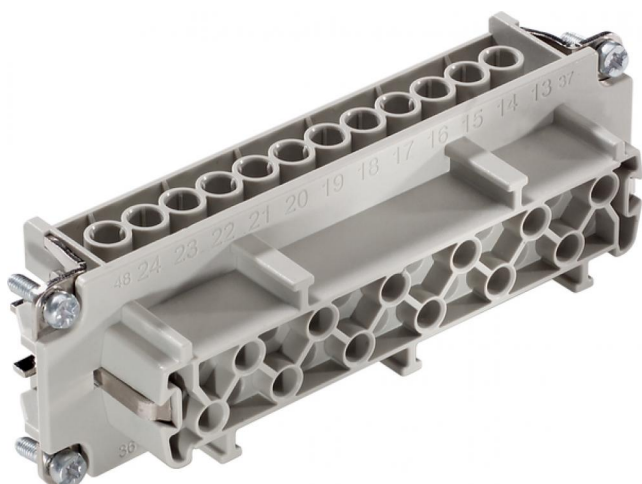
Photographs are not to scale and do not represent detailed images of the respective products.

Technical Data

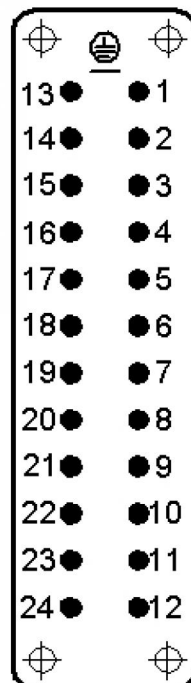
Article number:	75009650
Pieces / PU:	1
Rated voltage (V):	IEC: 500 V UL: 600 V CSA: 600 V
Rated impulse voltage:	6 kV
Rated current (A):	IEC: 16 A UL: 16 A CSA: 16 A
Contact resistance:	< 2 mOhm
Contacts:	Copper alloy, hard silver-plated
Number of contacts:	24 + PE
Termination methods:	Screw termination: 0.5 - 2.5 mm ²
Cycle of mechanical operation:	100
Temperature range:	-40°C to +100°C, short-term up to +125°C
VDE-tested:	Certified production control: VDE-REG. no.: B437 UL-tested: UL File Number: E75770
Degree of soiling:	3

Product Management	Document: EPIC® KIT H-BE 24 SS TG M25	1 / 4
--------------------	---------------------------------------	-------

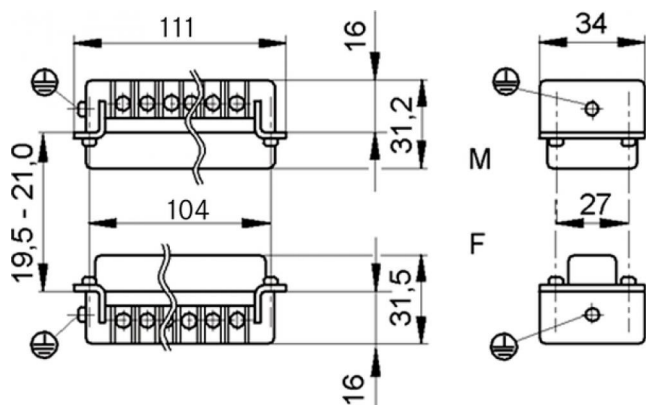
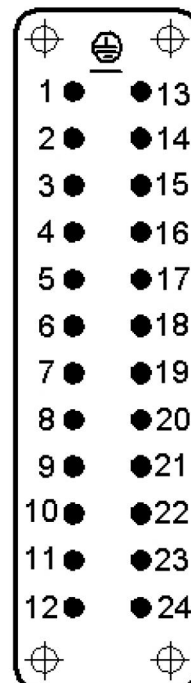
U.I. Lapp GmbH	<h1>DATASHEET</h1>	
	EPIC® KIT H-BE 24 SS TG M25	75009650 07.11.2014



M



F



Product Management	Document: EPIC® KIT H-BE 24 SS TG M25	2 / 4
--------------------	---------------------------------------	-------

U.I. Lapp GmbH	DATASHEET	 LAPP GROUP
	EPIC® KIT H-BE 24 SS TG M25	75009650 07.11.2014

Housing design H-B. The industry standard.
Ideal for many applications due to a wide range of housings and inserts



Automation



Industrial machinery and plant engineering



Mechanical resistance



Robust



Waterproof



Info

Universal, robust metal housings size H-B 24

Application range

Plant engineering
Light & sound technology
Plastics industry

Product features

Hood, low version
Bolts for double lever
Straight cable entry
Versions with / without neck

Remark

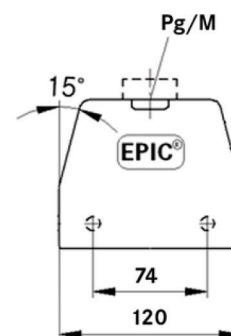
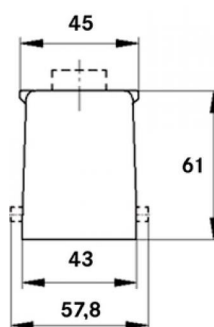
Photographs are not to scale and do not represent detailed images of the respective products.

Technical Data

Article number:	75009650
Pieces / PU:	1
Material:	Housing: powder-coated aluminium alloy, grey Lever: zinc-plated steel Sealing: NBR
Protection rating:	IP 65 (latched)
Temperature range:	-40°C to +100°C, short-term up to +125°C

Product Management	Document: EPIC® KIT H-BE 24 SS TG M25	3 / 4
--------------------	---------------------------------------	-------

U.I. Lapp GmbH	DATASHEET	 LAPP GROUP
	EPIC® KIT H-BE 24 SS TG M25	75009650 07.11.2014



Product Management	Document: EPIC® KIT H-BE 24 SS TG M25	4 / 4
--------------------	---------------------------------------	-------