

| | | |
|-------------------|------------------------------------|--|
| U.I. Lapp GmbH | DATASHEET |  |
| | EPIC® KIT H-BE 10 SS TG M25 | 75009640 29.11.2013 |

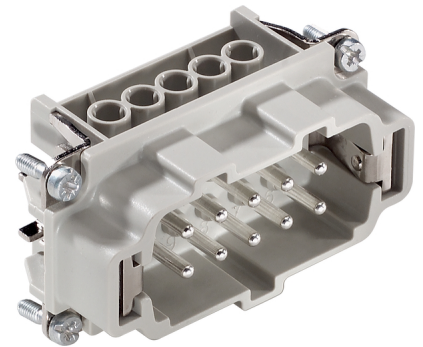
Standard inserts with screw termination, crimp termination and cage clamp termination
Standard inserts with screw, crimp and cage clamp termination
The EPIC® H-BE series is suitable for applications that require a reliable connection when working with high voltages and currents



Robust



Temperature-resistant



Info

Multifunctional insert for versatile applications
Screw, crimp and cage clamp version - freely combinable

Application range

Mechanical engineering
Light & sound technology
Plastics industry

Remark

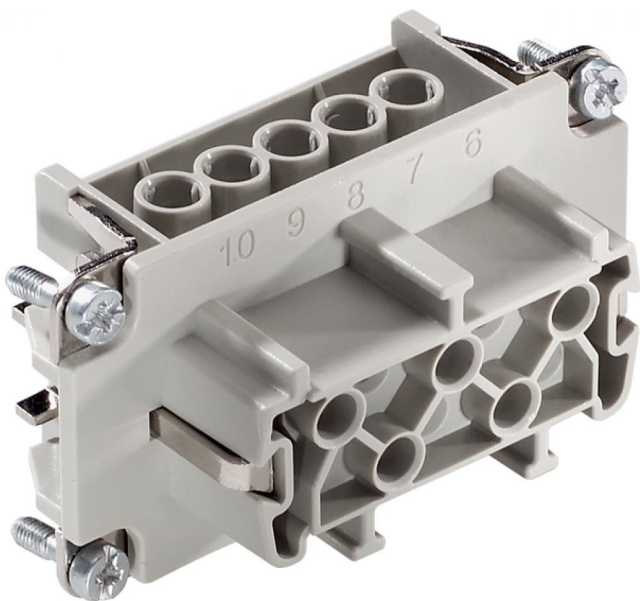
Photographs are not to scale and do not represent detailed images of the respective products.

Technical Data

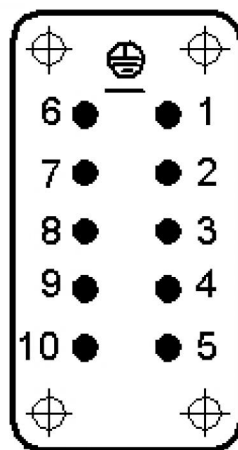
| | |
|--------------------------------|--|
| Article number: | 75009640 |
| Rated voltage (V): | IEC: 500 V UL: 600 V CSA: 600 V |
| Rated impulse voltage: | 6 kV |
| Rated current (A): | IEC: 16 A UL: 16 A CSA: 16 A |
| Contact resistance: | < 2 mOhm |
| Contacts: | Copper alloy, hard silver-plated |
| Number of contacts: | 10 + PE |
| Termination methods: | Screw termination: 0.5 - 2.5 mm ² |
| Cycle of mechanical operation: | 100 |
| Temperature range: | -40 °C to +100 °C, short-term up to +125 °C |
| VDE-tested: | Certified production control: VDE-REG. no.: B437 |
| | UL-tested: |
| | UL File Number: E75770 |
| Degree of soiling: | 3 |

| | | |
|--------------------|---------------------------------------|-------|
| Product Management | Document: EPIC® KIT H-BE 10 SS TG M25 | 1 / 4 |
|--------------------|---------------------------------------|-------|

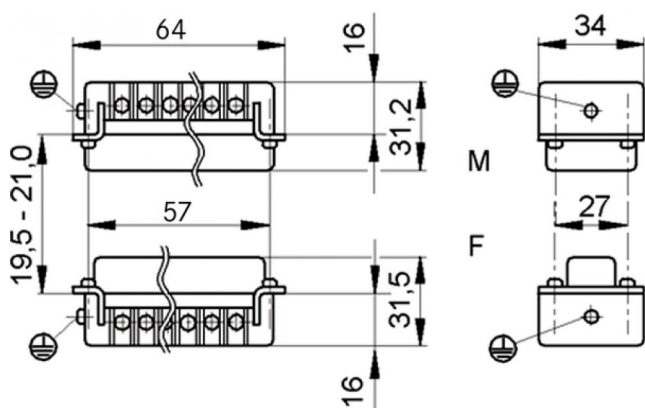
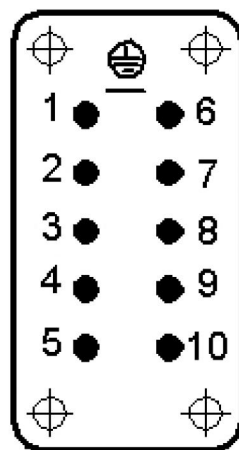
| | | |
|-------------------|------------------------------------|--|
| U.I. Lapp GmbH | DATASHEET |  LAPP GROUP |
| | EPIC® KIT H-BE 10 SS TG M25 | 75009640 29.11.2013 |



M



F



| | | |
|--------------------|---------------------------------------|-------|
| Product Management | Document: EPIC® KIT H-BE 10 SS TG M25 | 2 / 4 |
|--------------------|---------------------------------------|-------|

| | | |
|-------------------|------------------------------------|--|
| U.I. Lapp GmbH | DATASHEET |  |
| | EPIC® KIT H-BE 10 SS TG M25 | 75009640 29.11.2013 |

Housing design H-B. The industry standard.
The smallest housing with single and double lever. The right housing is available for every application



Automation



Industrial machinery and plant engineering



Mechanical resistance



Robust



Waterproof



Info

Universal, robust metal housings size H-B 10

Application range

Plant engineering
Light & sound technology
Plastics industry

Product features

Hood, low version
Bolts for double lever
Straight cable entry
Versions with / without neck

Remark

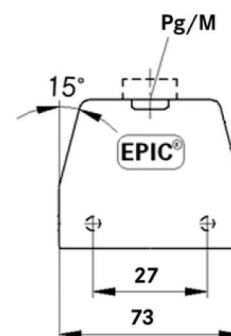
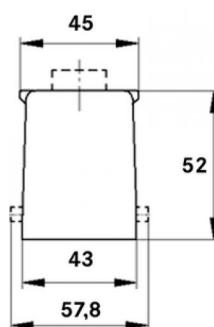
Photographs are not to scale and do not represent detailed images of the respective products.

Technical Data

| | |
|--------------------|--|
| Article number: | 75009640 |
| Material: | Housing: powder-coated aluminium alloy, grey Lever: zinc-plated steel Sealing: NBR |
| Protection rating: | IP 65 (latched) |
| Temperature range: | -40 °C to +100 °C, short-term up to +125 °C |

| | | |
|--------------------|---------------------------------------|-------|
| Product Management | Document: EPIC® KIT H-BE 10 SS TG M25 | 3 / 4 |
|--------------------|---------------------------------------|-------|

| | | |
|-------------------|------------------------------------|--|
| U.I. Lapp GmbH | DATASHEET |  LAPP GROUP |
| | EPIC® KIT H-BE 10 SS TG M25 | 75009640 29.11.2013 |



| | | |
|--------------------|---------------------------------------|-------|
| Product Management | Document: EPIC® KIT H-BE 10 SS TG M25 | 4 / 4 |
|--------------------|---------------------------------------|-------|