

| | | |
|-------------------|-----------------------------------|--|
| U.I. Lapp GmbH | DATASHEET |  |
| | EPIC® KIT H-BE 6 SS TG M20 | 75009635 29.11.2013 |

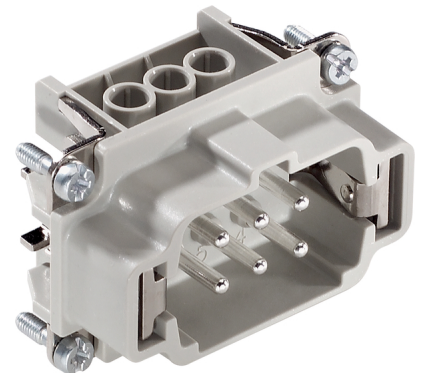
Standard inserts with screw termination, crimp termination and cage clamp termination
Standard inserts with screw, crimp and cage clamp termination
The EPIC® H-BE series is suitable for applications that require a reliable connection when working with high voltages and currents



Robust



Temperature-resistant



Info

Multifunctional insert for versatile applications
Screw, crimp and cage clamp version - freely combinable

Application range

Mechanical engineering
Light & sound technology
Plastics industry

Remark

Photographs are not to scale and do not represent detailed images of the respective products.

Technical Data

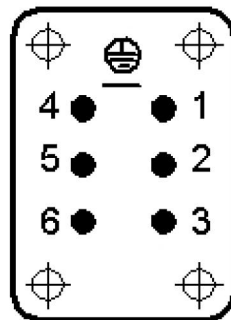
| | |
|--------------------------------|--|
| Article number: | 75009635 |
| Rated voltage (V): | IEC: 500 V UL: 600 V CSA: 600 V |
| Rated impulse voltage: | 6 kV |
| Rated current (A): | IEC: 16 A UL: 16 A CSA: 16 A |
| Contact resistance: | < 2 mOhm |
| Contacts: | Copper alloy, hard silver-plated |
| Number of contacts: | 6 + PE |
| Termination methods: | Screw termination: 0.5 - 2.5 mm² |
| Cycle of mechanical operation: | 100 |
| Temperature range: | -40 °C to +100 °C, short-term up to +125 °C |
| VDE-tested: | Certified production control: VDE-REG. no.: B437 UL-tested: UL File Number: E75770 |
| Degree of soiling: | 3 |

| | | |
|--------------------|--------------------------------------|-------|
| Product Management | Document: EPIC® KIT H-BE 6 SS TG M20 | 1 / 4 |
|--------------------|--------------------------------------|-------|

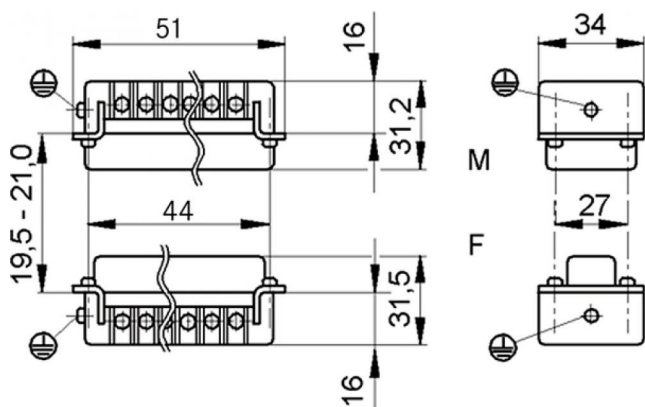
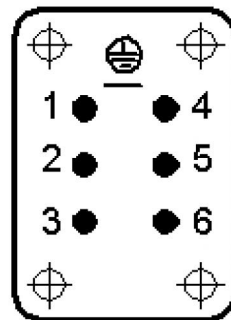
| | | |
|-------------------|-----------------------------------|--|
| U.I. Lapp GmbH | DATASHEET |  LAPP GROUP |
| | EPIC® KIT H-BE 6 SS TG M20 | 75009635 29.11.2013 |



M



F



| | | |
|--------------------|--------------------------------------|-------|
| Product Management | Document: EPIC® KIT H-BE 6 SS TG M20 | 2 / 4 |
|--------------------|--------------------------------------|-------|

| | | |
|-------------------|-----------------------------------|--|
| U.I. Lapp GmbH | DATASHEET |  |
| | EPIC® KIT H-BE 6 SS TG M20 | 75009635 29.11.2013 |

Housing design H-B. The industry standard.
The smallest housing out of the H-B series. For inserts with high electrical properties



Automation



Industrial machinery and plant engineering



Mechanical resistance



Robust



Waterproof



Info

Universal, robust metal housings size H-B 6

Application range

Plant engineering
Control engineering
Plastics industry

Product features

Hood, low version
Bolts for single lever
Straight cable entry
Versions with / without neck

Remark

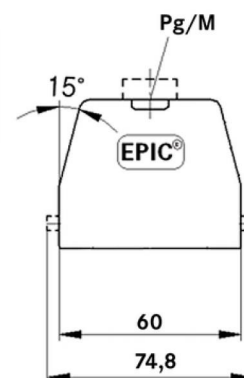
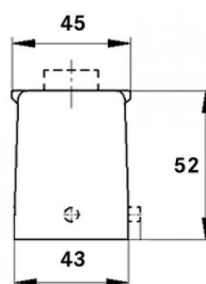
Photographs are not to scale and do not represent detailed images of the respective products.

Technical Data

| | |
|--------------------|--|
| Article number: | 75009635 |
| Material: | Housing: powder-coated aluminium alloy, grey Lever: zinc-plated steel Sealing: NBR |
| Protection rating: | IP 65 (latched) |
| Temperature range: | -40 °C to +100 °C, short-term up to +125 °C |

| | | |
|--------------------|--------------------------------------|-------|
| Product Management | Document: EPIC® KIT H-BE 6 SS TG M20 | 3 / 4 |
|--------------------|--------------------------------------|-------|

| | | |
|-------------------|-----------------------------------|--|
| U.I. Lapp GmbH | DATASHEET |  LAPP GROUP |
| | EPIC® KIT H-BE 6 SS TG M20 | 75009635 29.11.2013 |



| | | |
|--------------------|--------------------------------------|-------|
| Product Management | Document: EPIC® KIT H-BE 6 SS TG M20 | 4 / 4 |
|--------------------|--------------------------------------|-------|