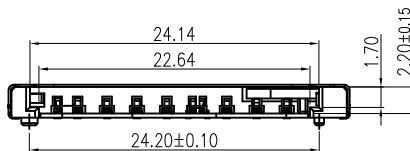
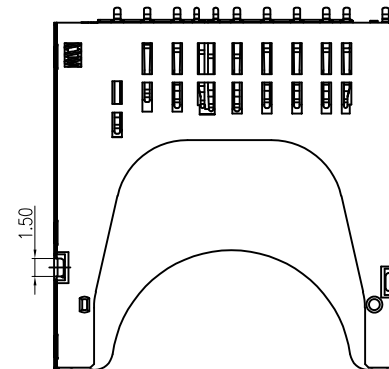
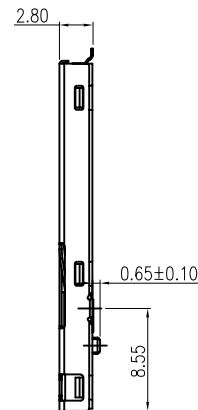
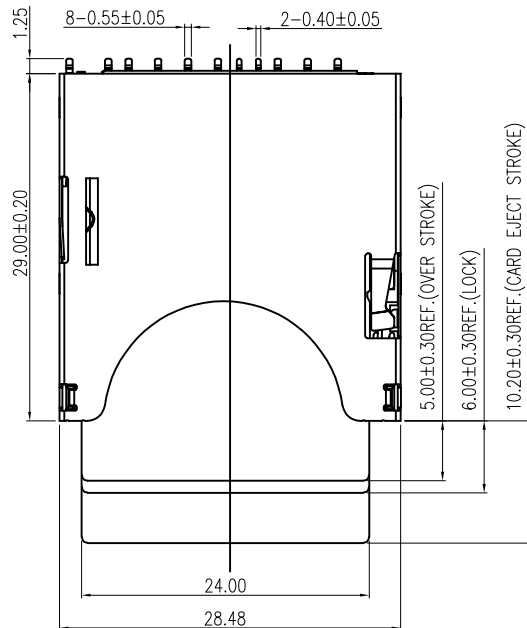
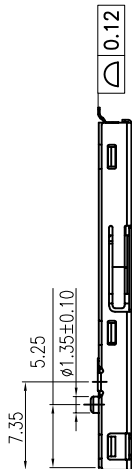


APPROVED: _____

DATE: _____ TITLE: _____



SPECIFICATIONS:

Material:

Insulator: Hi-Temp thermoplastic, rated UL 94V-0

Insulator color: Black

Contacts: Copper Alloy

Shell: SUS-304, Nickel plated, Solder area: Gold flash plated

Plating:

Gold Flash over Nickel underplate in contact area,

Matte Tin over Nickel underplate on Solder tails

Electrical:

Voltage rating: 250V RMS

Current rating: 0.5A

Contact resistance: 100 mohms max

Insulation resistance: 1000 Mohms min

Dielectric withstanding voltage: 500V AC for 1 minute

Temperature Rating:

-40°C to +85°C

Environmental:

Lead free, RoHS compliant



Rev	AWO #	Description	Date	Appr
-		RELEASED	07/12/13	
A		REVISED SHAPE	12/9/13	AY/GC
B		REVISED SHAPE	12/25/13	AY/GC
C		UPDATE DIM.	12/21/16	AY/CT
D		UPDATE DRAWING	11/5/18	AY/OC
E		UPDATE DRAWING	10/22/19	OW/RC
F		UPDATE DRAWING	6/12/25	LW1/SL2

PACKAGED ON TAPE & REEL

UNLESS OTHERWISE SPECIFIED ALL DIMENSIONS ARE MILLIMETERS. TOLERANCES: EXCEPT AS NOTED			
	MM		ANGLE
.X	± 0.30	X	± 2°
.XX	± 0.20		
.XXX	± 0.10		

DRAWN	TW	07/12/13
CHECKED	NP	07/12/13
APPROVED		

THIS DRAWING CONTAINS INFORMATION THAT IS PROPRIETARY
AND SHOULD NOT BE USED WITHOUT PRIOR WRITTEN
PERMISSION FROM ADAM TECH

**ADAM
TECH**

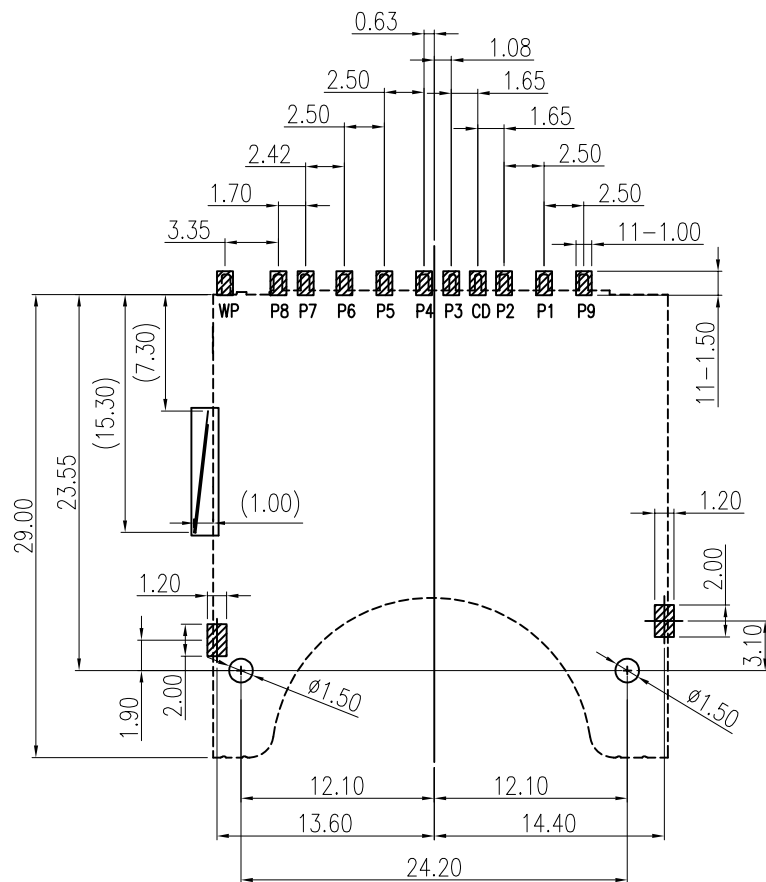
909 Rahway Avenue,
Union, NJ 07083
Phone: 908-687-5000
Fax: 908-687-5710

TITLE SECURE DIGITAL SOCKET, PUSH-PUSH CARD LOCK TYPE, SHELL SPOT INSIDE			
SIZE X	PART NO. SDP-09L-SG-T/R	REV. F	
REF: S00108C	SCALE: NTS	SHEET 1 OF 3	

APPROVED: _____

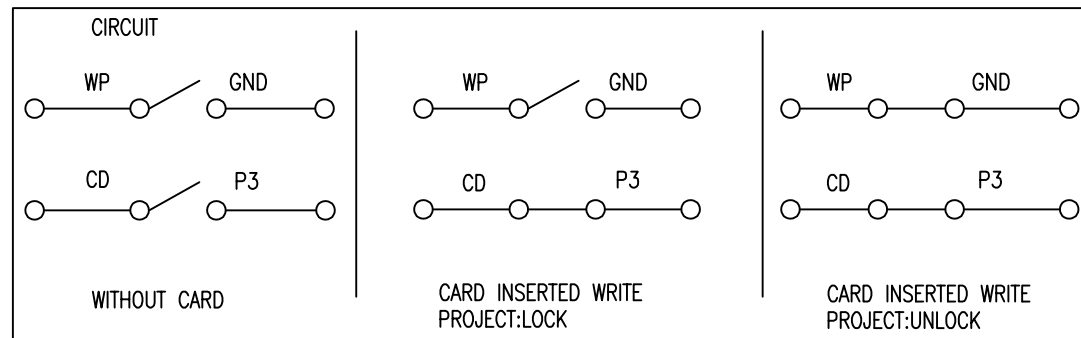
DATE: _____ TITLE: _____

Rev	AWO #	Description	Date	Appr
SEE SHT 1 OF 3 FOR REVISION				



RECOMMENDED PCB LAYOUT

SD CARD PIN DESIGN			
PIN NO.	NAME	TYPE	DESCRIPTION
P1	CD/DAT3	I/O/PP	CARD DETECT/DATA LINE(BIT3)
P2	CMD	PP	COMMAND/RESPONSE
P3	VSS1	S	SUPPLY VOLTAGE GROUND
P4	VDD	S	SUPPLY VOLTAGE
P5	CLK	I	CLOCK
P6	VSS2	S	SUPPLY VOLTAGE GROUND
P7	DAT0	I/O/PP	DATA LINE(BIT 0)
P8	DAT1	I/O/PP	DATA LINE(BIT 1)
P9	DAT2	I/O/PP	DATA LINE(BIT 2)



PACKAGED ON TAPE & REEL

UNLESS OTHERWISE SPECIFIED ALL DIMENSIONS
ARE MILLIMETERS. TOLERANCES: EXCEPT AS NOTED

MM	ANGLE
.X ± 0.30	X ± 2°
.XX ± 0.20	
.XXX ± 0.10	

ADAM
TECH

909 Rahway Avenue,
Union, NJ 07083
Phone: 908-687-5000
Fax: 908-687-5710

DRAWN	TW	07/12/13
CHECKED	NP	07/12/13
APPROVED		

TITLE	SECURE DIGITAL SOCKET, PUSH-PUSH CARD LOCK TYPE, SHELL SPOT INSIDE		
-------	---	--	--

THIS DRAWING CONTAINS INFORMATION THAT IS PROPRIETARY
AND SHOULD NOT BE USED WITHOUT PRIOR WRITTEN
PERMISSION FROM ADAM TECH

SIZE X	PART NO. SDP-09L-SG-T/R	REV. F
REF: S00108C	SCALE: NTS	SHEET 2 OF 3

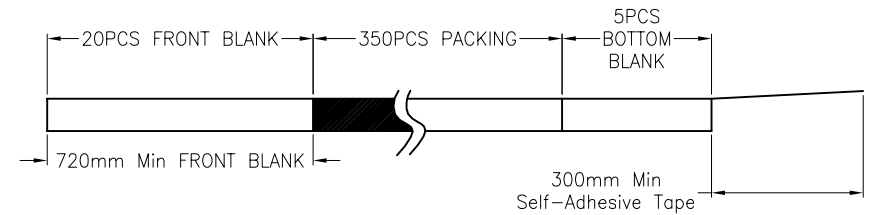


APPROVED: _____

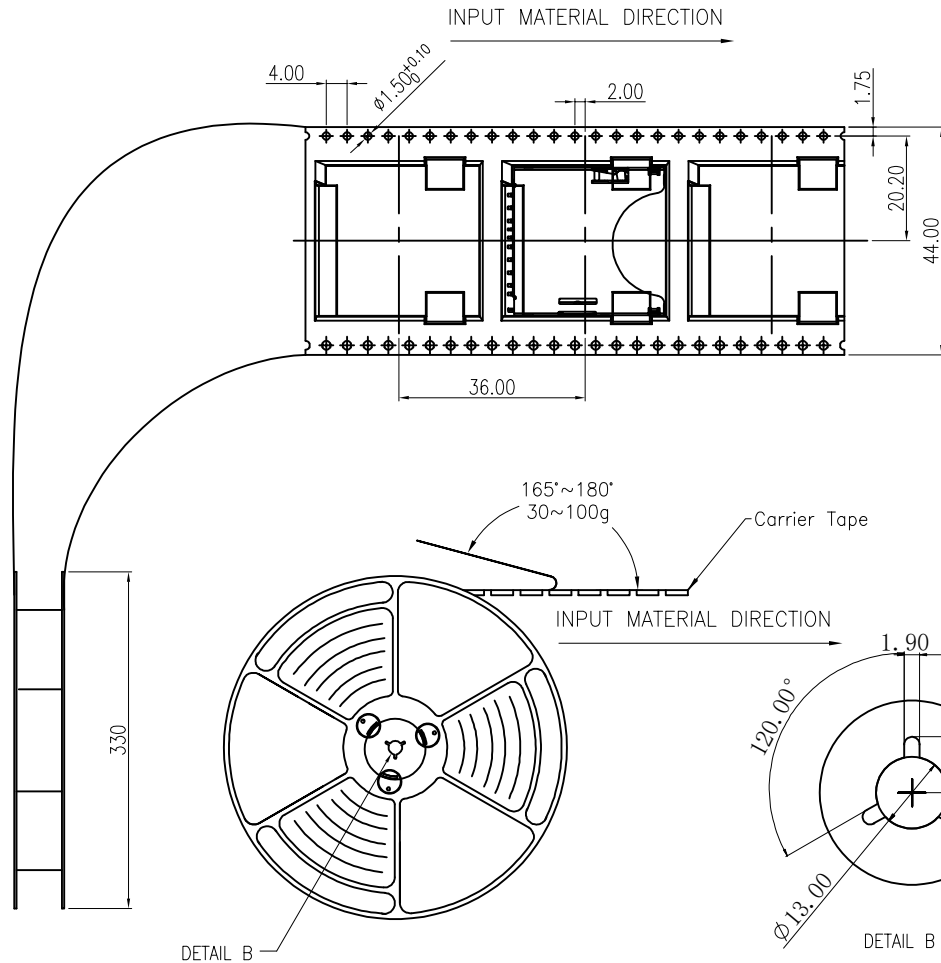
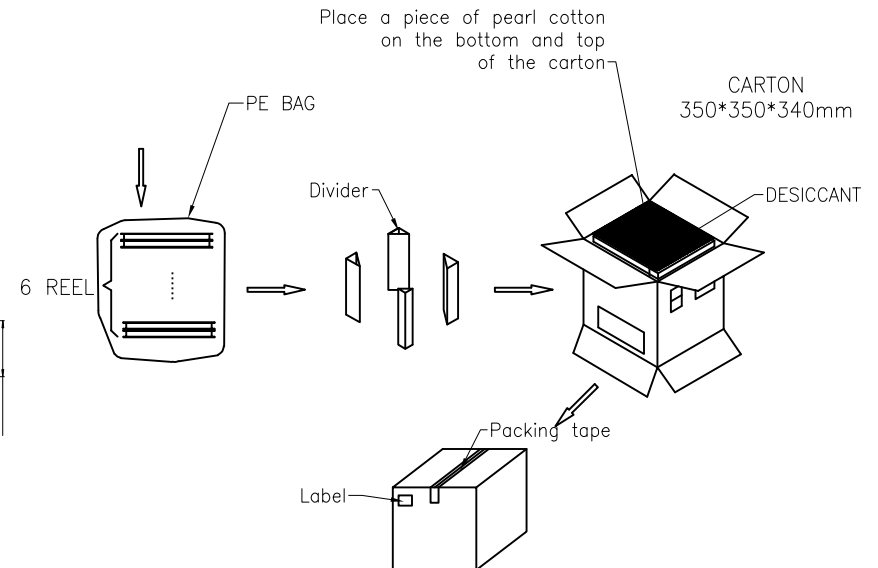
DATE: _____ TITLE: _____

Rev	AWO #	Description	Date	Appr
SEE SHT 1 OF 3 FOR REVISION				

1 REEL/350 PCS



1 Carton/2100 PCS



Carrier Tape	T=0.3 W44mm Pitch=36mm	81.0m
Carton	K=K,T=7.0, 350*350*340mm	1PCS
PE Bag	T=0.8, 730*760mm, 730mm Front Blank	1PCS
Reel	Blue, 13 inch*44mm, Ø330mm	6PCS
Divider	K=K,T=7.0, 95*95*290mm	4PCS
Self-Adhesive Tape	W37.5mm For 44mm Wide Tape, 200m/R	82.8m
Pearl Cotton	340*340*18mm	2PCS

UNLESS OTHERWISE SPECIFIED ALL DIMENSIONS ARE MILLIMETERS. TOLERANCES: EXCEPT AS NOTED			<div>ADAM TECH</div> <div>909 Rahway Avenue, Union, NJ 07083 Phone: 908-687-5000 Fax: 908-687-5710</div>		
<div>MM .X ± 0.30 .XX ± 0.20 .XXX ± 0.10</div> <div>ANGLE X ± 2°</div>					
DRAWN	TW	07/12/13	TITLE <div>SECURE DIGITAL SOCKET, PUSH-PUSH CARD LOCK TYPE, SHELL SPOT INSIDE</div>		
CHECKED	NP	07/12/13			
APPROVED					
THIS DRAWING CONTAINS INFORMATION THAT IS PROPRIETARY AND SHOULD NOT BE USED WITHOUT PRIOR WRITTEN PERMISSION FROM ADAM TECH			SIZE X	PART NO. SDP-09L-SG-T/R	REV. F
			REF: S00108C	SCALE: NTS	SHEET 3 OF 3