

# NH KNIFE-BLADE

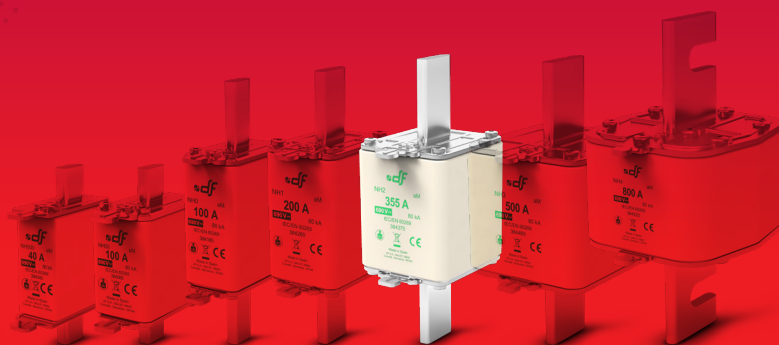
FUSE LINKS & FUSE BASES



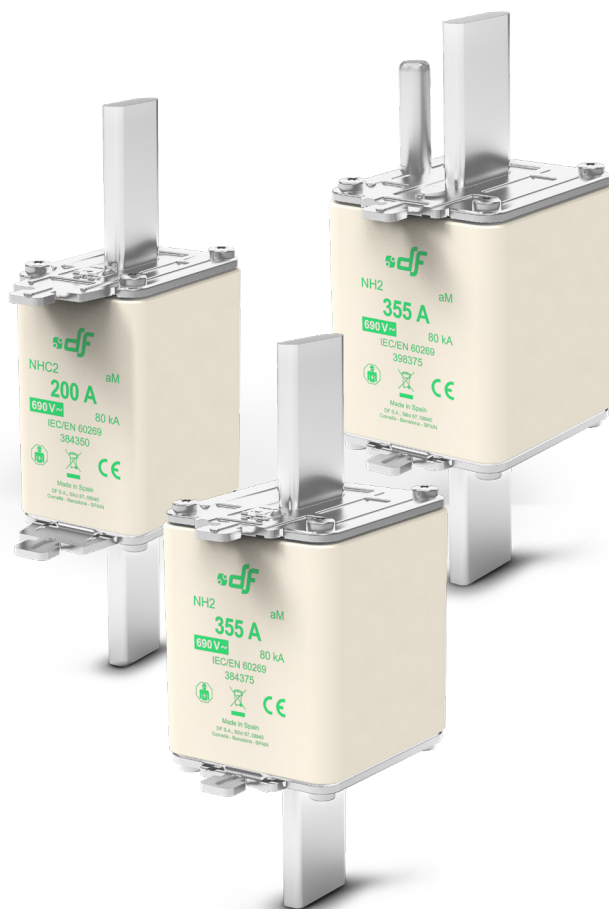
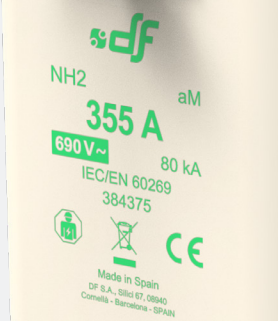
## aM

## NH 500V/690V

fuse links



## PROTECTING THE WORLD



## Knife type NH aM 500V/690V fuse links with top indicator

These high breaking capacity fuse-links are intended for short circuit protection in motors, transformer and other load with high inrush currents, with rated voltages up to 690V (+5%).

The rated breaking capacity is 80kA at 690V or 120kA at 500V. Excellent protection of switchgear (contactor, thermal switch) due to the good current limiting capability and low  $I^2t$  values. These fuse links must be associated to an overload device protection (thermal switch).

Compact versions in low rated currents of every size.

The range comprises the following fuse links:

- Size NHC2 aM 690V 125A to 200A
- Size NH2 aM 500V/690V 224A to 400A
- Size NH2 with striker aM 500V/690V 125A to 400A

Manufactured with ceramic body with high withstand to internal pressure and thermal shock, that allows a high breaking capacity. Knife contacts are made of silver plated copper or brass.

They are manufactured according to IEC/EN60269 Standards and comply with RoHS directive.

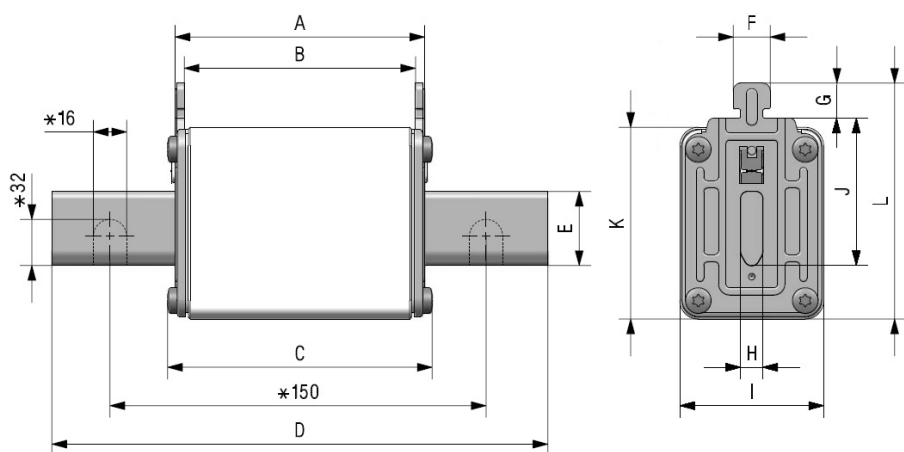


## Range

	U <sub>n</sub>	BREAKING CAPACITY	I <sub>n</sub>	REFERENCE	PACKING
			(A)		Uni /BOX
<b>NHC2</b>	690V	80kA	125	<b>384340</b>	3/24
			160	<b>384345</b>	3/24
			200	<b>384350</b>	3/24
			224	<b>384355</b>	3/30
<b>NH2</b>	690V	80kA	250	<b>384360</b>	3/30
			315	<b>384370</b>	3/30
			355	<b>384375</b>	3/18
	500V	120kA	400	<b>383380</b>	3/18

	U <sub>n</sub>	BREAKING CAPACITY	I <sub>n</sub>	REFERENCE	PACKING
			(A)		Uni /BOX
<b>NH2 WITH STRIKER</b>	690V	80kA	125	<b>398340</b>	3/18
			160	<b>398345</b>	3/18
			200	<b>398350</b>	3/18
			250	<b>398360</b>	3/18
			315	<b>398370</b>	3/18
			355	<b>398375</b>	3/18
	500V	120kA	400	<b>397380</b>	3/18

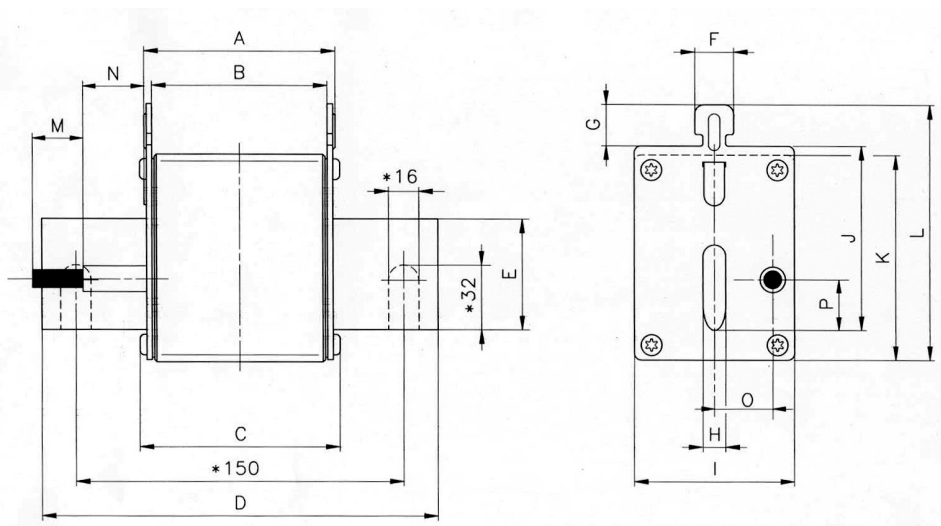
## Dimensions



\* Only for NH4 fuse links

	A	B	C	D	E	F	G	H	I	J	K	L
NHC2	68	62	71,5	150	20	10	9,5	6	39	48	52	72
NH2	68	62	71,5	150	25	10	9,5	6	53	48	60	72

Weight NHC2: 470gr | NH2: 620gr



\* Only for NH4 fuse links

A	B	C	D	E	F	G	H	I	J	K	L	M	N	O	P
68	62	71,5	150	20	10	9,5	6	53	48	60	72	15	28,5	19	14,5

Weight 620gr



## Technical data

<b>Rated voltage</b>	690V +5% 500V +10%
<b>Rated current</b>	125A...400A
<b>Rated breaking capacity</b>	80kA @690V 120kA @500V
<b>Operating class</b>	aM
<b>Rated frequency</b>	42...62Hz
<b>Storage temperature</b>	-40°C ... 90°C
<b>Operating temperature *</b>	-40°C ... 80°C

\* For ambient temperatures higher than 25°C it is necessary to apply a derating in maximum current.

IEC/EN 60269-1  
IEC/EN 60269-2  
RoHS Compliant



## Standards

## Materials

<b>Body</b>	Steatite C221
<b>Contact blades</b>	Copper or brass (silver plated)
<b>Plates</b>	Aluminium
<b>Screws</b>	Zinc plated steel

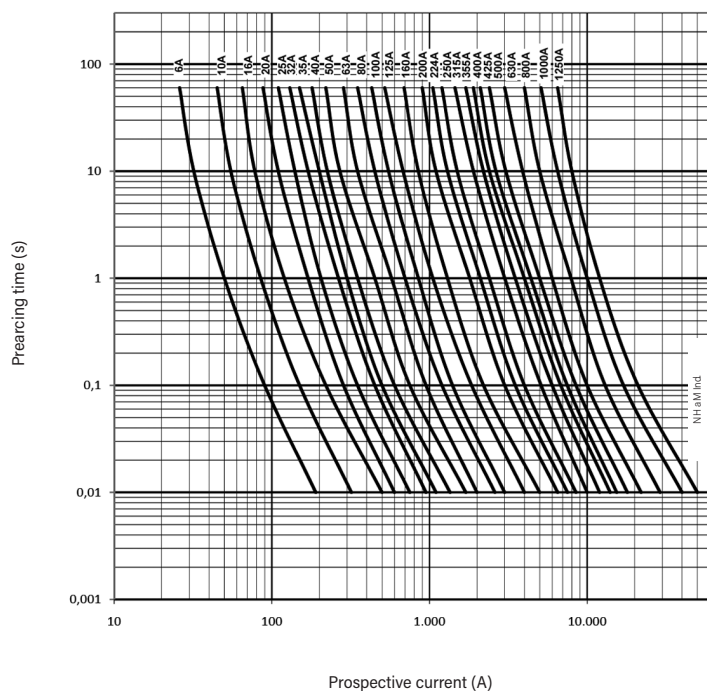
## Power dissipation

	$I_n$ (A)	POWER DISSIPATION (W)	PREARcing $I_t^2$ $\approx 4 \text{ ms (A}^2\text{s)}$	TOTAL $I_t^2$ 230V (A <sup>2</sup> s)	TOTAL $I_t^2$ 400V (A <sup>2</sup> s)	TOTAL $I_t^2$ 500V (A <sup>2</sup> s)
NHC2	125	8,7	53000	99787	116890	157872
	160	9,9	82000	154388	180848	244255
	200	13,7	167000	314425	368313	497447
NH2	224	14,0	240000	451868	529312	714894
	250	16,5	291000	547890	641790	866809
	315	22,0	463000	871728	1021130	1379149
	355	27,3	470000	884908	1036568	1400000
	400	27,8	502000	1080129	1308183	1882500

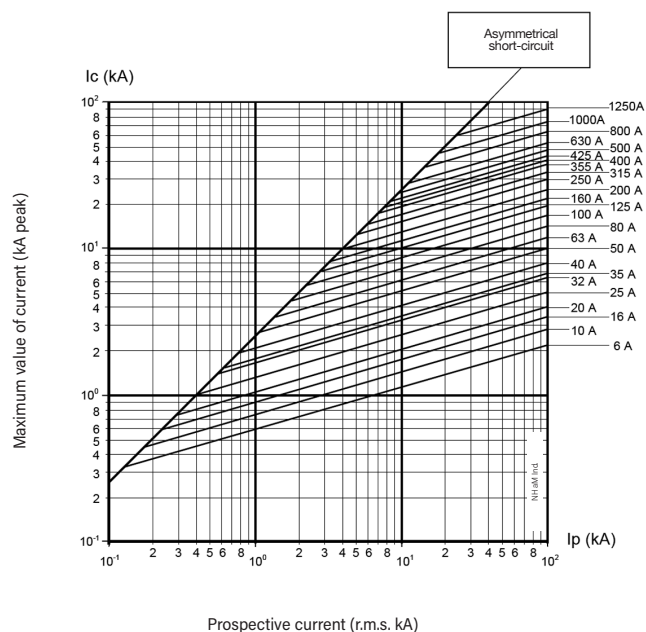
\* Same data for STRIKER range (125A up to 400A)



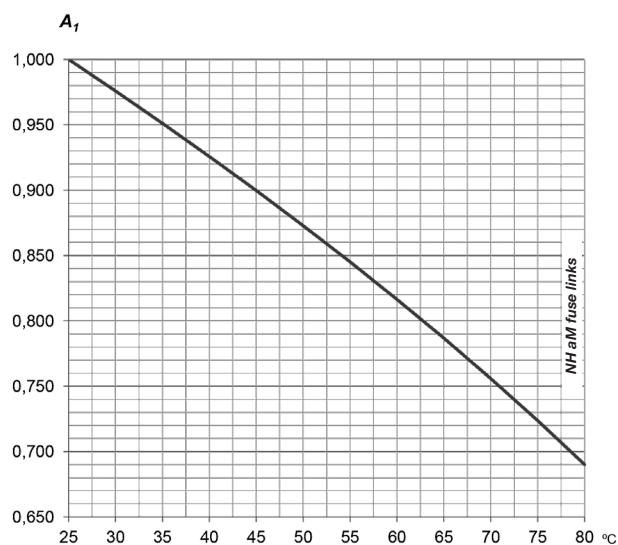
## t-I characteristics



## Cut-off characteristics



## Ambient temperature derating factor



$t_a$ (°C)	$A_1$
25	1,00
30	0,98
35	0,95
40	0,93
45	0,90
50	0,87
55	0,84
60	0,82
65	0,79
70	0,76
75	0,72
80	0,69





# PROTECTING THE WORLD

## HEAD OFFICE AND FACTORY

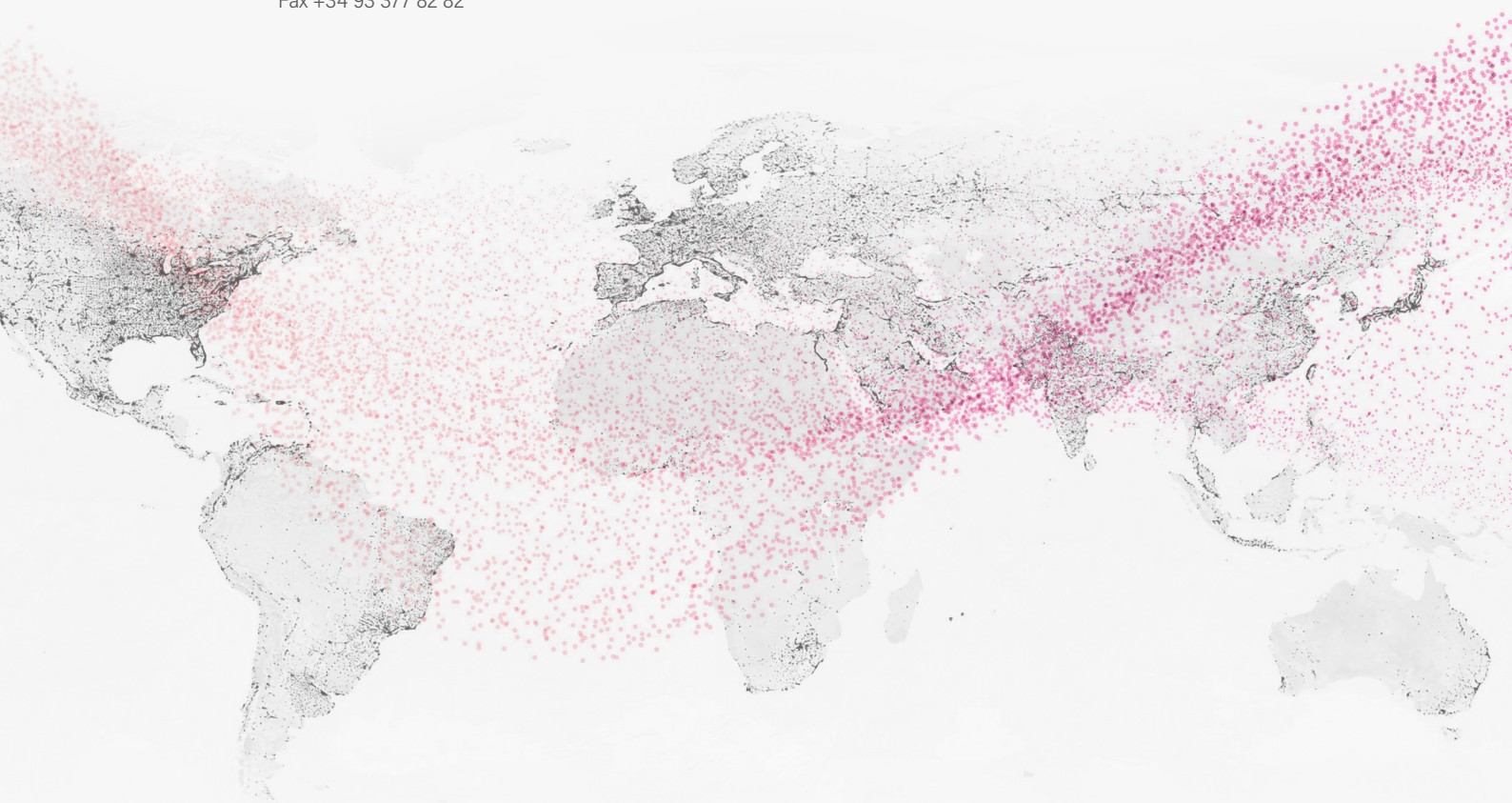
SILICI, 67-69  
08940 CORNELLA DE LLOBREGAT  
BARCELONA · SPAIN  
Tel. +34 93 377 85 85  
Fax +34 93 377 82 82

## INTERNATIONAL SALES

Tel. +34 93 475 08 64  
Fax +34 93 480 07 75  
export@dfelectric.es

## NATIONAL SALES

Tel. 93 475 08 64  
Fax 93 480 07 76  
comercial@dfelectric.es



dfelectric.es



According to the waste of electrical and electronic equipment directive, electrical material should not be part of the usual waste. This symbol alerts users that these products should be recycled according to local environmental waste disposal regulations.



The "electro technical expert" logo marked on the products included in this data sheet indicates that the installation of these products must be carried out by expert personnel with specialized knowledge.



To prevent electrical hazards, carry out the installation without voltage.



**Safety notice**  
Please capture the following QR code and read our safety notice carefully before installing our products.



The data reflected in this technical record are subject to the correct installation of the product in accordance with manufacturer's instructions, relevant installation standards and professional practices, maintained and used in applications for which they were made.

The products described in this document have been designed, developed and tested in accordance with specific standard. They are considered components that are integrated as part of installation, machine or equipment. The correct general operation of the referred product is responsibility of the manufacturer of the installation, machine or equipment.

DF ELECTRIC cannot guarantee the characteristics of an installation, machine or equipment that has been designed by a third party. Once a product has been selected, the user must verify that it is appropriate for its application, through the verifications and/or tests that it deems appropriate.

DF ELECTRIC retains the right to change the dimensions, specifications, materials or design of its products at any time with or without notice.

©2020 DF Electric. All rights reserved