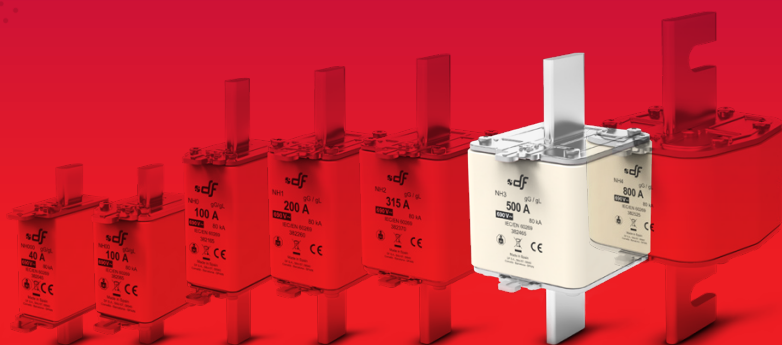


NH KNIFE-BLADE

FUSE LINKS & FUSE BASES



gG
NH 690V
fuse links



**PROTECTING
THE WORLD**



Knife type NH gG 690V fuse links with top indicator

These high breaking capacity fuse-links are intended for protection of power lines and equipment, against overloads and short-circuits with rated voltages up to 690V (+5%).

The rated breaking capacity is 80kA.

Compact versions in low rated currents of every size.

The range comprises the following fuse links:

- Size NHC3 gG 690V 250A and 315A
- Size NH3 gG 690V 355A to 500A
- Size NH3 with striker gG 690V 315A to 500A

Manufactured with ceramic body with high withstand to internal pressure and thermal shock, that allows a high breaking capacity. Knife contacts are made of silver plated copper or brass.

They are manufactured according to IEC/EN60269 Standards and comply with RoHS directive.

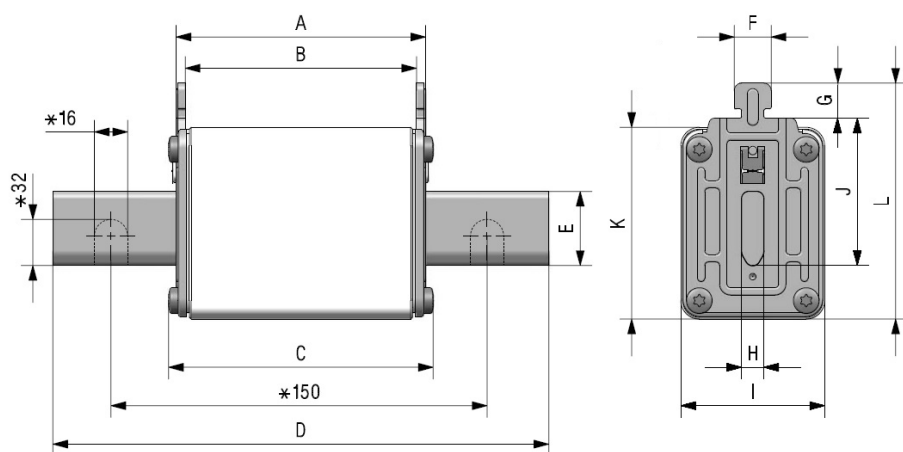


Range

	In (A)	REFERENCE	PACKING Uni /BOX
NHC3	250	382435	3/18
	315	382445	3/18
	355	382450	3/18
NH3	400	382455	3/18
	425	382460	3/18
	500	382465	3/18

	In (A)	REFERENCE	PACKING Uni /BOX
NH3 WITH STRIKER	315	396445	3/18
	355	396450	3/18
	400	396455	3/18
	425	396460	3/18
	500	396465	3/18

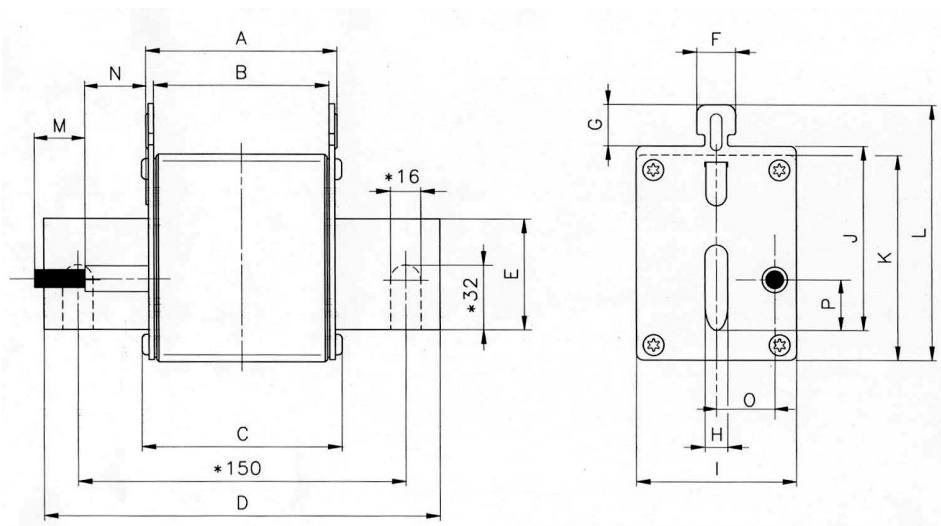
Dimensions



* Only for NH4 fuse links

	A	B	C	D	E	F	G	H	I	J	K	L
NHC3	68	62	71,5	150	25	10	9,5	6	53	60	60	84
NH3	68	62	73	150	32	10	9,5	6	70	60	75	87

Weight NHC3: 630gr | NH3: 1,02kg



* Only for NH4 fuse links

A	B	C	D	E	F	G	H	I	J	K	L	M	N	O	P
68	62	73	150	32	10	9,5	6	70	60	75	87	15	28	24	14,5

Weight 1,02kg



Technical data

Rated voltage	690V AC +5%
Rated current	250A...500A
Rated breaking capacity	80kA
Operating class	gG
Rated frequency	42...62Hz
Storage temperature	-40°C ... 90°C
Operating temperature *	-40°C ... 80°C

* For ambient temperatures higher than 25°C it is necessary to apply a derating in maximum current.

Standards

IEC/EN 60269-1
IEC/EN 60269-2
RoHS Compliant



Materials

Body	Steatite C221
Contact blades	Copper or brass (silver plated)
Plates	Aluminium
Screws	Zinc plated steel

DC Application

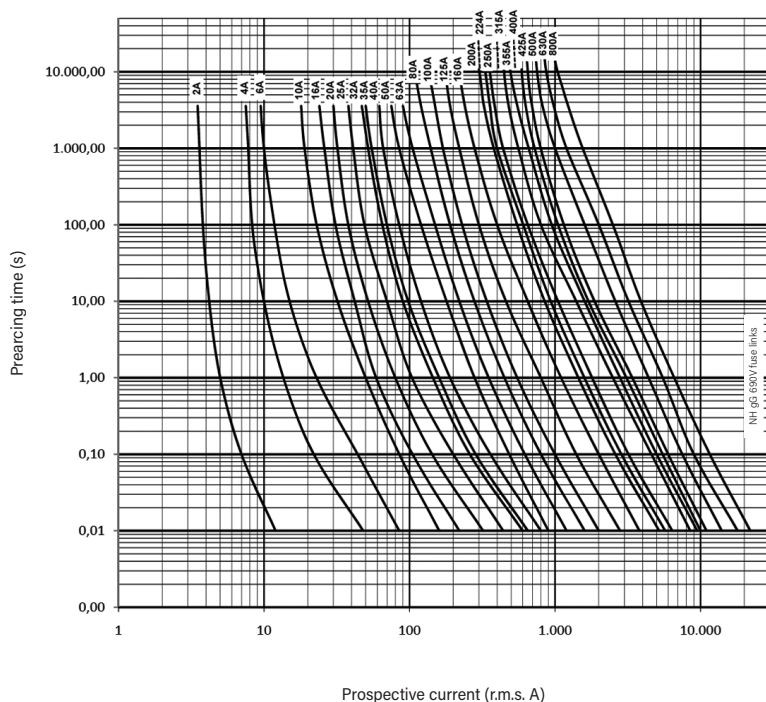
MAX DC VOLTAGE	DC BREAKING CAPACITY
440V DC	25kA

Power dissipation

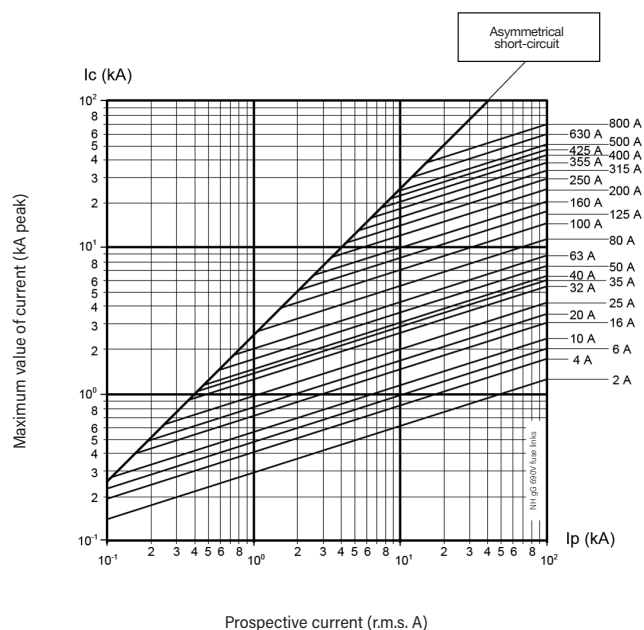
	I _n (A)	POWER DISSIPATION (W)	PREARcing I _p ≈ 4 ms (A ² s)	TOTAL I _p 400V (A ² s)	TOTAL I _p 500V (A ² s)	TOTAL I _p 690V (A ² s)
NHC3	250	22,6	167000	328929	389671	537689
	315	30,0	264000	519983	616007	850000
	355	30,5	326000	667612	798639	1122590
NH3	400	36,1	402000	823251	984825	1384298
	425	37,4	409000	837586	1001973	1408402
	500	45,0	726000	1486767	1778564	2500000

* Same data for STRIKER range (315A up to 500A)

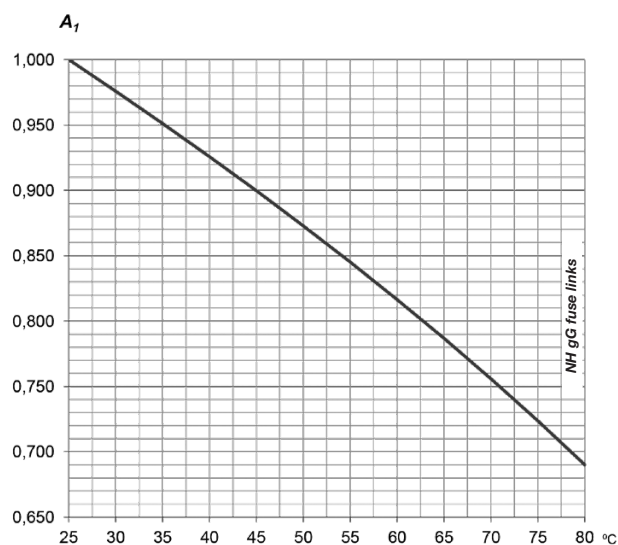
t-I characteristics



Cut-off characteristics



Ambient temperature derating factor



t_a (°C)	A_1
25	1,00
30	0,98
35	0,95
40	0,93
45	0,90
50	0,87
55	0,84
60	0,82
65	0,79
70	0,76
75	0,72
80	0,69



PROTECTING THE WORLD

HEAD OFFICE AND FACTORY

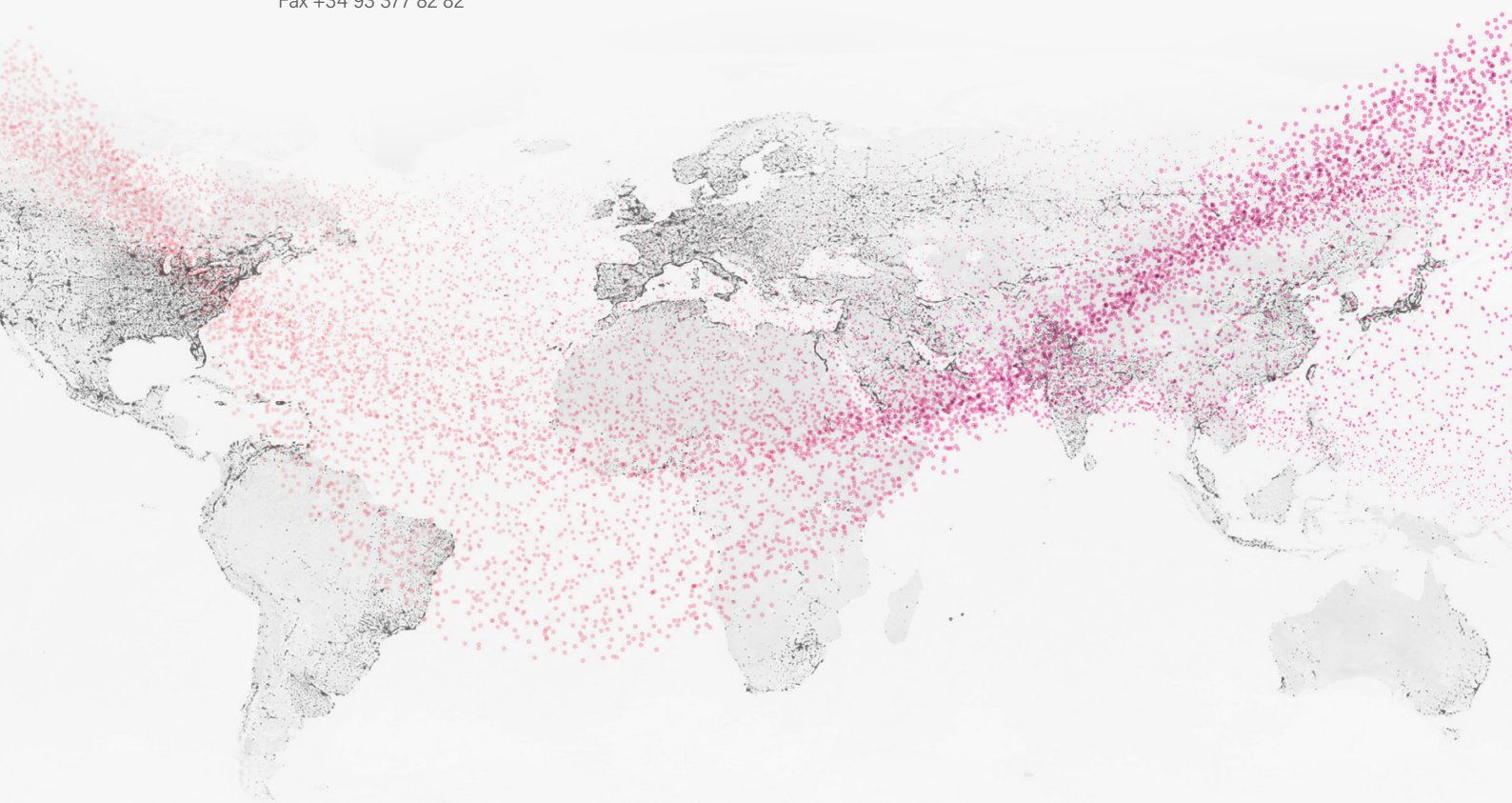
SILICI, 67-69
08940 CORNELLA DE LLOBREGAT
BARCELONA · SPAIN
Tel. +34 93 377 85 85
Fax +34 93 377 82 82

INTERNATIONAL SALES

Tel. +34 93 475 08 64
Fax +34 93 480 07 75
export@dfelectric.es

NATIONAL SALES

Tel. 93 475 08 64
Fax 93 480 07 76
comercial@dfelectric.es



dfelectric.es



According to the waste of electrical and electronic equipment directive, electrical material should not be part of the usual waste. This symbol alerts users that these products should be recycled according to local environmental waste disposal regulations.



The "electro technical expert" logo marked on the products included in this data sheet indicates that the installation of these products must be carried out by expert personnel with specialized knowledge.



To prevent electrical hazards, carry out the installation without voltage.



Safety notice
Please capture the following QR code and read our safety notice carefully before installing our products.



The data reflected in this technical record are subject to the correct installation of the product in accordance with manufacturer's instructions, relevant installation standards and professional practices, maintained and used in applications for which they were made.

The products described in this document have been designed, developed and tested in accordance with specific standard. They are considered components that are integrated as part of installation, machine or equipment. The correct general operation of the referred product is responsibility of the manufacturer of the installation, machine or equipment.

DF ELECTRIC cannot guarantee the characteristics of an installation, machine or equipment that has been designed by a third party. Once a product has been selected, the user must verify that it is appropriate for its application, through the verifications and/or tests that it deems appropriate.

DF ELECTRIC retains the right to change the dimensions, specifications, materials or design of its products at any time with or without notice.

©2020 DF Electric. All rights reserved