

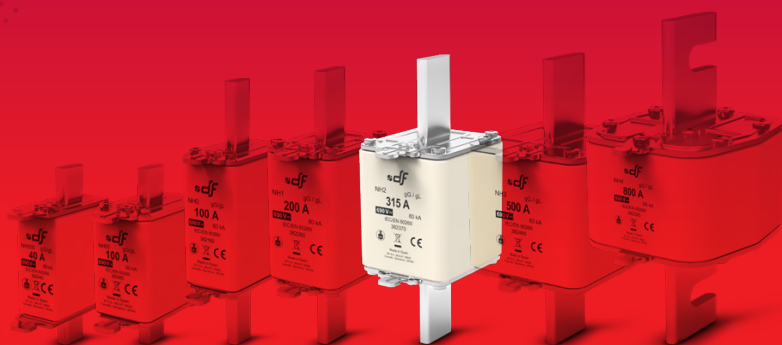


**PROTECTING  
THE WORLD**

# NH KNIFE-BLADE

FUSE LINKS & FUSE BASES

**gG**  
**NH 690V**  
fuse links





### Knife type NH gG 690V fuse links with top indicator

These high breaking capacity fuse-links are intended for protection of power lines and equipment, against overloads and short-circuits with rated voltages up to 690V (+5%).

The rated breaking capacity is 80kA.

Compact versions in low rated currents of every size.

The range comprises the following fuse links:

- Size NHC2 gG 690V 63A to 200A
- Size NH2 gG 690V 224A to 315A
- Size NH2 with striker gG 690V 125A to 315A

Manufactured with ceramic body with high withstand to internal pressure and thermal shock, that allows a high breaking capacity. Knife contacts are made of silver plated copper or brass.

They are manufactured according to IEC/EN60269 Standards and comply with RoHS directive.

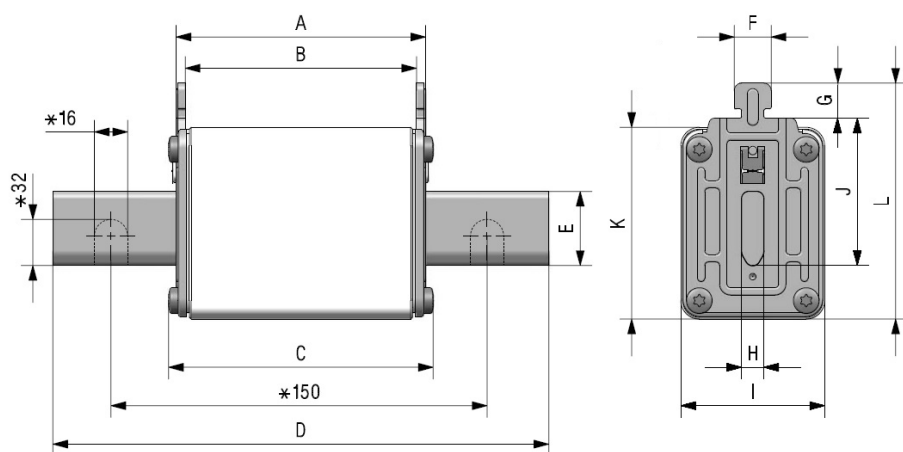


## Range

	In (A)	REFERENCE	PACKING Uni /BOX
NHC2	63	<b>382325</b>	3/24
	80	<b>382330</b>	3/24
	100	<b>382335</b>	3/24
	125	<b>382340</b>	3/24
	160	<b>382345</b>	3/24
	200	<b>382350</b>	3/24
NH2	224	<b>382355</b>	3/18
	250	<b>382360</b>	3/18
	315	<b>382370</b>	3/18

	In (A)	REFERENCE	PACKING Uni /BOX
NH2 WITH STRIKER	125	<b>396340</b>	3/18
	160	<b>396345</b>	3/18
	200	<b>396350</b>	3/18
	224	<b>396355</b>	3/18
	250	<b>396360</b>	3/18
	315	<b>396370</b>	3/18

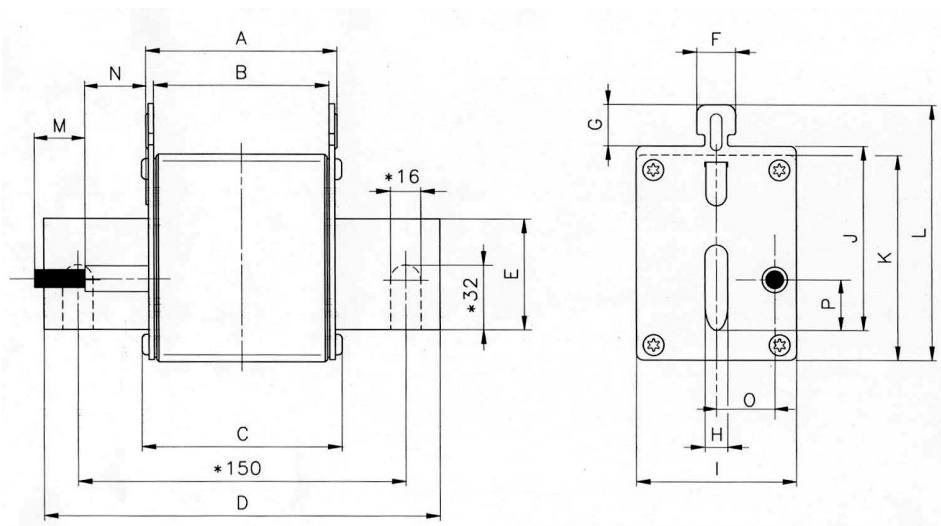
## Dimensions



\* Only for NH4 fuse links

	A	B	C	D	E	F	G	H	I	J	K	L
<b>NHC2</b>	68	62	71,5	150	20	10	9,5	6	39	48	52	72
<b>NH2</b>	68	62	71,5	150	25	10	9,5	6	53	48	60	72

**Weight** NHC2: 470gr | NH2: 620gr



\* Only for NH4 fuse links

A	B	C	D	E	F	G	H	I	J	K	L	M	N	O	P
68	62	71,5	150	20	10	9,5	6	53	48	60	72	15	28,5	19	14,5

**Weight** 620gr



## Technical data

Rated voltage	690V AC +5%
Rated current	63A...315A
Rated breaking capacity	80kA
Operating class	gG
Rated frequency	42...62Hz
Storage temperature	-40°C ... 90°C
Operating temperature *	-40°C ... 80°C

\* For ambient temperatures higher than 25°C it is necessary to apply a derating in maximum current.

## Standards

IEC/EN 60269-1  
IEC/EN 60269-2  
RoHS Compliant



## Materials

Body	Steatite C221
Contact blades	Copper or brass (silver plated)
Plates	Aluminium
Screws	Zinc plated steel

## DC Application

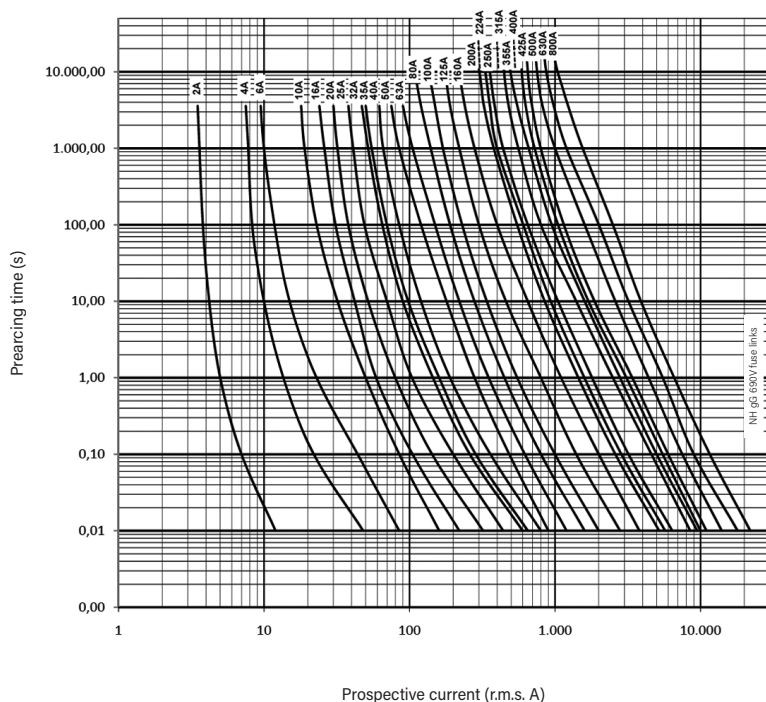
MAX DC VOLTAGE	DC BREAKING CAPACITY
440V DC	25kA

## Power dissipation

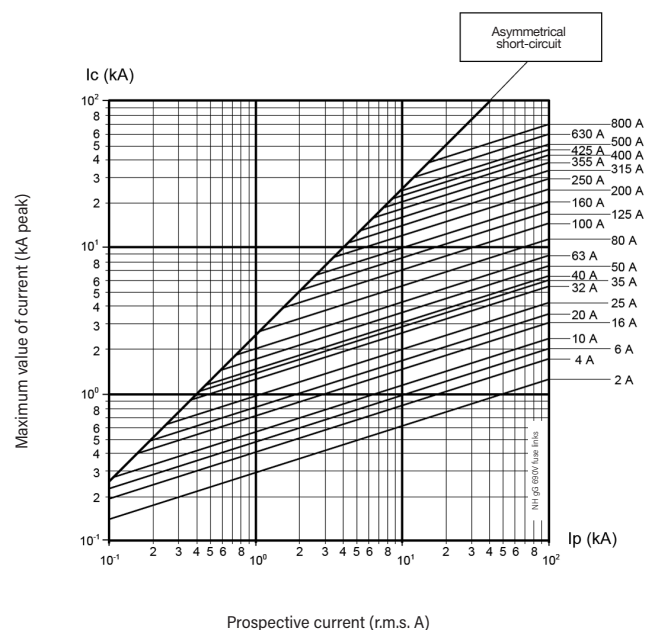
	I <sub>n</sub> (A)	POWER DISSIPATION (W)	PREARcing I <sub>p</sub> ≈ 4 ms (A <sup>2</sup> s)	TOTAL I <sub>p</sub> 400V (A <sup>2</sup> s)	TOTAL I <sub>p</sub> 500V (A <sup>2</sup> s)	TOTAL I <sub>p</sub> 690V (A <sup>2</sup> s)
NHC2	63	7,0	6600	13805	16602	23571
	80	8,2	11700	24472	29430	41786
	100	10,5	21000	43925	52824	75000
	125	11,7	24000	49436	59225	83478
	160	16,9	50000	102992	123385	173913
	200	17,0	92000	189505	227028	320000
NH2	224	21,9	118000	232417	275337	379924
	250	23,0	167000	328929	389671	537689
	315	30,0	264000	519983	616007	850000

\* Same data for STRIKER range (125A up to 315A)

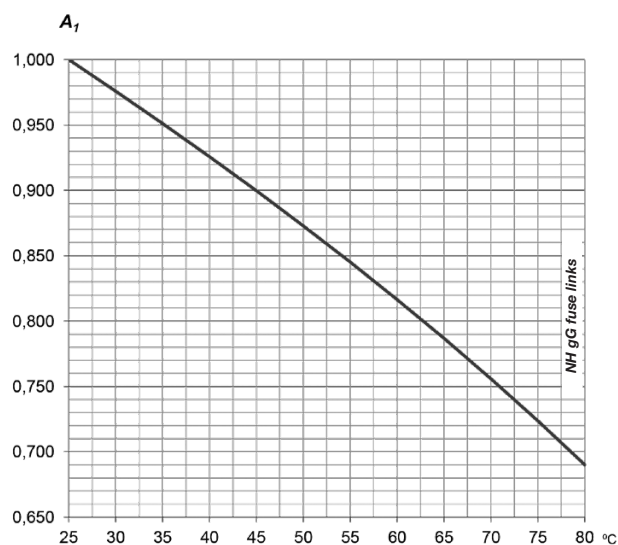
## t-I characteristics



## Cut-off characteristics



## Ambient temperature derating factor



$t_a$ (°C)	$A_t$
25	1,00
30	0,98
35	0,95
40	0,93
45	0,90
50	0,87
55	0,84
60	0,82
65	0,79
70	0,76
75	0,72
80	0,69





# PROTECTING THE WORLD

## HEAD OFFICE AND FACTORY

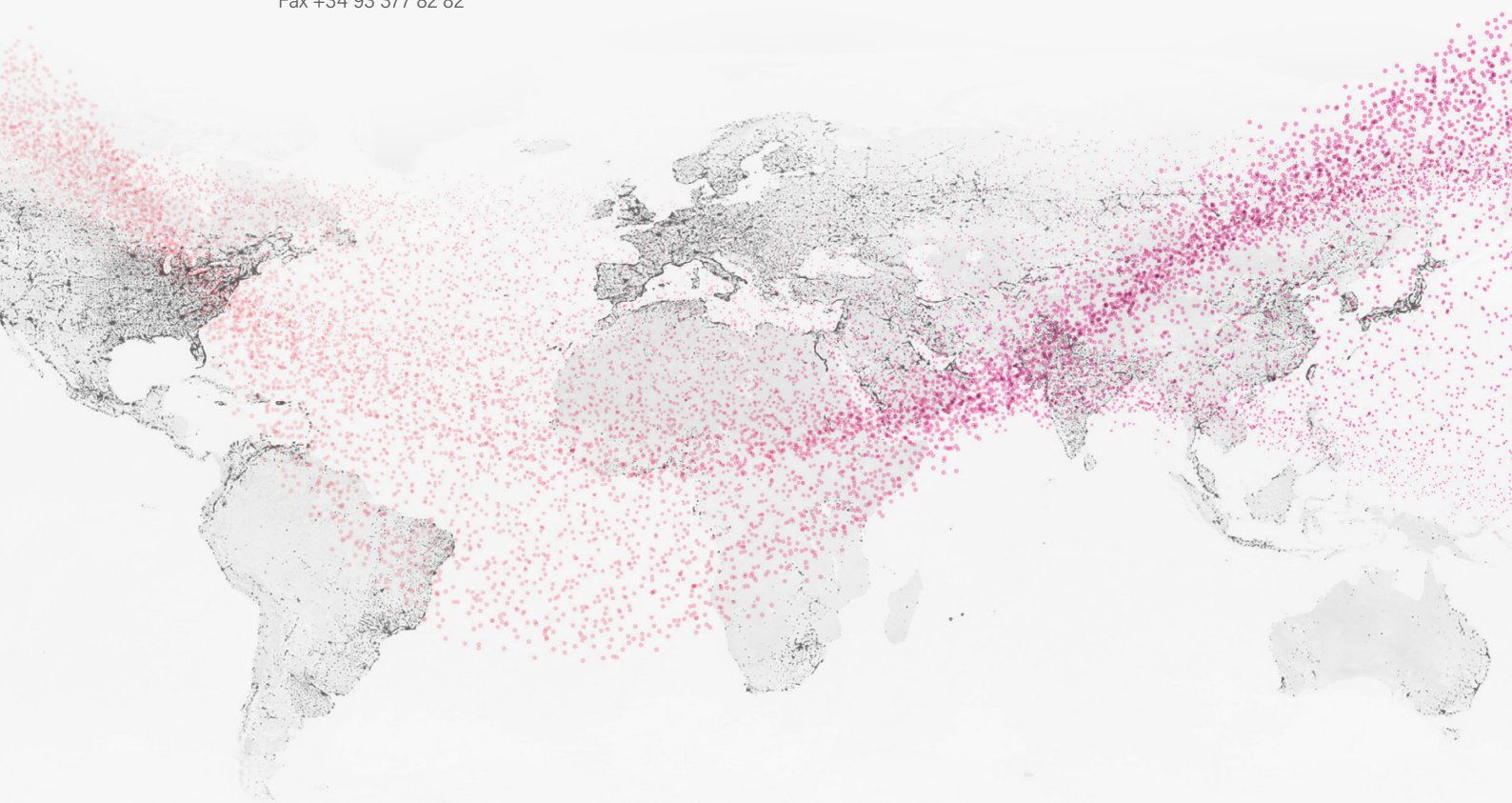
SILICI, 67-69  
08940 CORNELLA DE LLOBREGAT  
BARCELONA · SPAIN  
Tel. +34 93 377 85 85  
Fax +34 93 377 82 82

## INTERNATIONAL SALES

Tel. +34 93 475 08 64  
Fax +34 93 480 07 75  
export@dfelectric.es

## NATIONAL SALES

Tel. 93 475 08 64  
Fax 93 480 07 76  
comercial@dfelectric.es



dfelectric.es



According to the waste of electrical and electronic equipment directive, electrical material should not be part of the usual waste. This symbol alerts users that these products should be recycled according to local environmental waste disposal regulations.



The "electro technical expert" logo marked on the products included in this data sheet indicates that the installation of these products must be carried out by expert personnel with specialized knowledge.



To prevent electrical hazards, carry out the installation without voltage.



**Safety notice**  
Please capture the following QR code and read our safety notice carefully before installing our products.



The data reflected in this technical record are subject to the correct installation of the product in accordance with manufacturer's instructions, relevant installation standards and professional practices, maintained and used in applications for which they were made.

The products described in this document have been designed, developed and tested in accordance with specific standard. They are considered components that are integrated as part of installation, machine or equipment. The correct general operation of the referred product is responsibility of the manufacturer of the installation, machine or equipment.

DF ELECTRIC cannot guarantee the characteristics of an installation, machine or equipment that has been designed by a third party. Once a product has been selected, the user must verify that it is appropriate for its application, through the verifications and/or tests that it deems appropriate.

DF ELECTRIC retains the right to change the dimensions, specifications, materials or design of its products at any time with or without notice.

©2020 DF Electric. All rights reserved