

NH KNIFE-BLADE

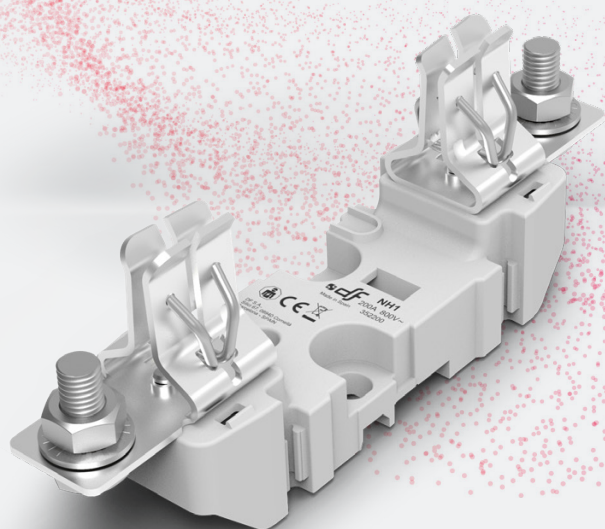
FUSE LINKS & FUSE BASES

NH ST 690V/800V

bases for NH fuse links

ST

NH1



NH00

NH0

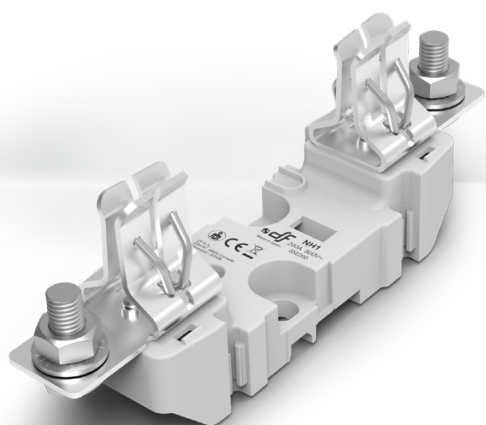
NH1

NH2

NH3

NH4

PROTECTING THE WORLD



ST fuse bases for NH Knife-blade fuse links

Manufactured with a high quality materials

- Silver plated copper contacts.
- Plastic materials with high temperature resistance and self-extinguishable.
- All the materials are according to the European Directive RoHS (Restriction of the use of certain hazardous substances in electrical material).



For mounting on DIN/EN rail or with screw fixing.

Single-phase or three-pole type.

Connection by screws, fixed nut or clamps.

Contacts with double spring in order to obtain an optimum operation.

Wide range of accessories (contact covers, fuse link covers, partition walls) that enables IP20 protection index.

Multi-pole units can be made with connection accessories.

Manufactured according IEC, EN and DIN standards.

Accessories

REFERENCE	DESCRIPTION	PACKING Uni./BOX
326200	PARTITION WALL FIXED TO SEPARATORS	2
326201	PARTITION WALL DIRECTLY FIXED TO THE BODY	2
325250	SEPARATOR MULTIPOLE UNITS SEPARATOR	2
325005	TERMINAL COVER	6
325018	FUSE LINKS COVER	3
325042	IP20 PROTECTION KIT	1
341160	NEUTRAL LINK	3
357160	MICROSWITCH REPLACEMENT	1
357010	MICROSWITCH	1/12
340001	FUSE PULLER	1

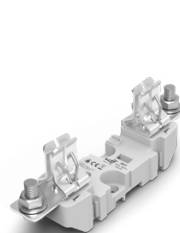
TERMINALS

	CROSS SECTION (mm ²)	CABLE	
343400	150/16	1	3
344400	150/25-16	2	3

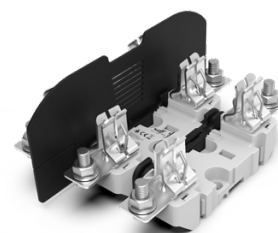
Range

REFERENCE	POLES	FIXING	CONNECTION	PACKING Uni./BOX
352300	1P	DIN RAIL/SCREW	SCREW	3
353300	3P	DIN RAIL/SCREW	SCREW	1
356250*	1P	DIN RAIL/SCREW	SCREW	1

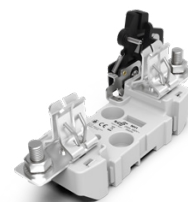
* with microswitch



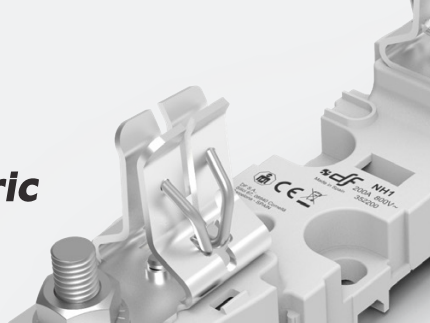
352300



353300



356250



Technical data

Rated current	250A	
Rated voltage	690V AC 800V AC 750V DC	
Rated power dissipation	32W	
Protection index	IP00 / IP20	
Ambient temperature of service	-20°C ... 80°C	
Storage temperature	-40°C ... 80°C	
Correction of the admissible current in function of the temperature	20° C	1
	30° C	0,95
	40° C	0,90
	50° C	0,80
	60° C	0,70
	70° C	0,60
	80° C	0,50



DO NOT OPERATE UNDER LOAD

Standards

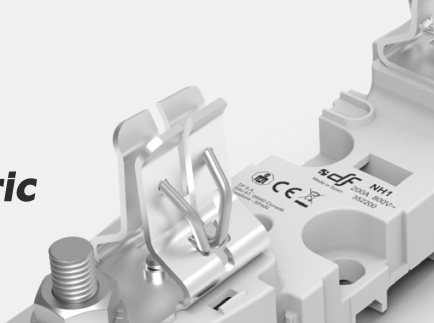
IEC/EN 60269-1
IEC/EN 60269-2
DIN 43620

Application characteristics

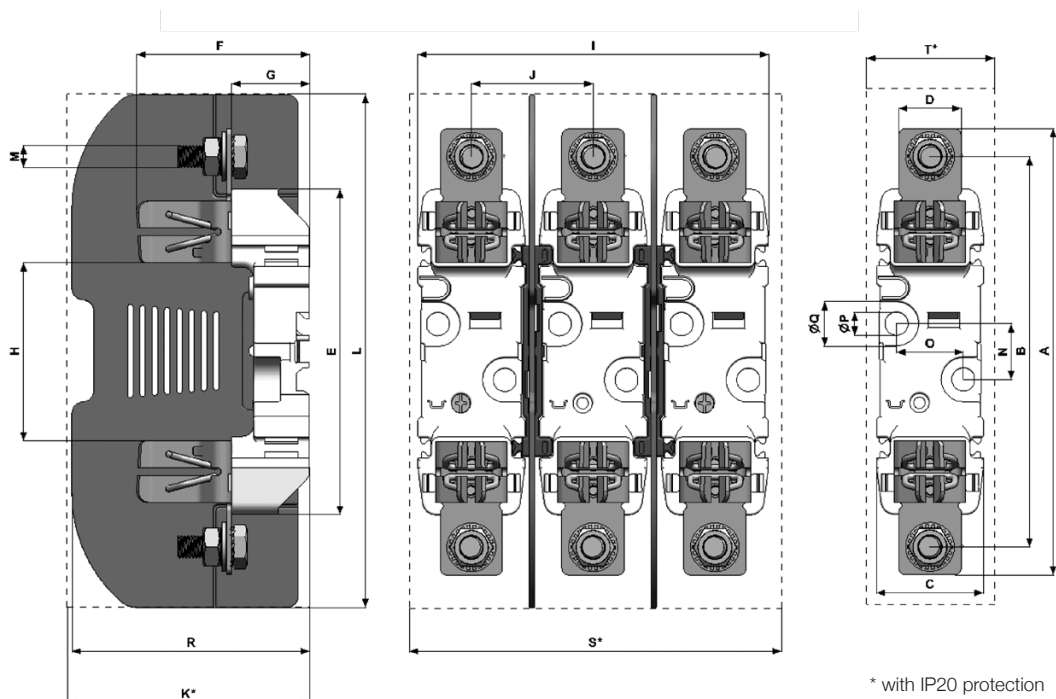
Mounting	DIN/EN Standard Rail DIN 46277/1-3 (EN50022) Screws
Connecting wire	M10
Maximum tightening torque on terminals	32 Nm
Maximum tightening torque fuse holder fixation with screws	12 Nm
Multipolar assembly	► FIG. 1

Materials

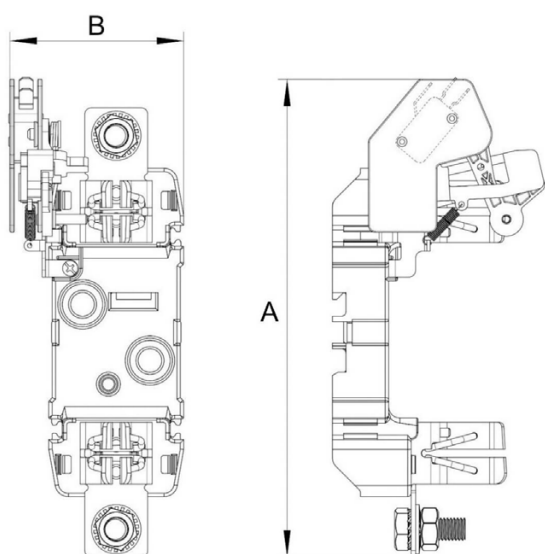
Contacts	Silver plated copper
Body	Thermoplastic, high resistance to temperature Flammability: (UL94) V0 Glow wire test: (IEC-60695) 960°C
Partition walls	Thermoplastic, high resistance to temperature Flammability: (UL94) V0 Glow wire test: (IEC-60695) 960°C
Separators	Thermoplastic, high resistance to temperature Flammability: (UL94) V0 Glow wire test: (IEC-60695) 960°C
Terminal covers	Thermoplastic, high resistance to temperature Flammability: (UL94) V0 Glow wire test: (IEC-60695) 960°C
Fuse links covers	Thermoplastic, high resistance to temperature Flammability: (UL94) V2 Glow wire test: (IEC-60695) 850°C
Accessory terminals	Tin plated brass Zinc plated steel screws



Dimensions



A	B	C	D	E	F	G	H	I	J	K	L	M	N	O	P	Q	R	S	T
200	175	48	28	146	77,5	35	80	169,5	60,8	107	230	M10	25	30	10,5	20	107	175	54



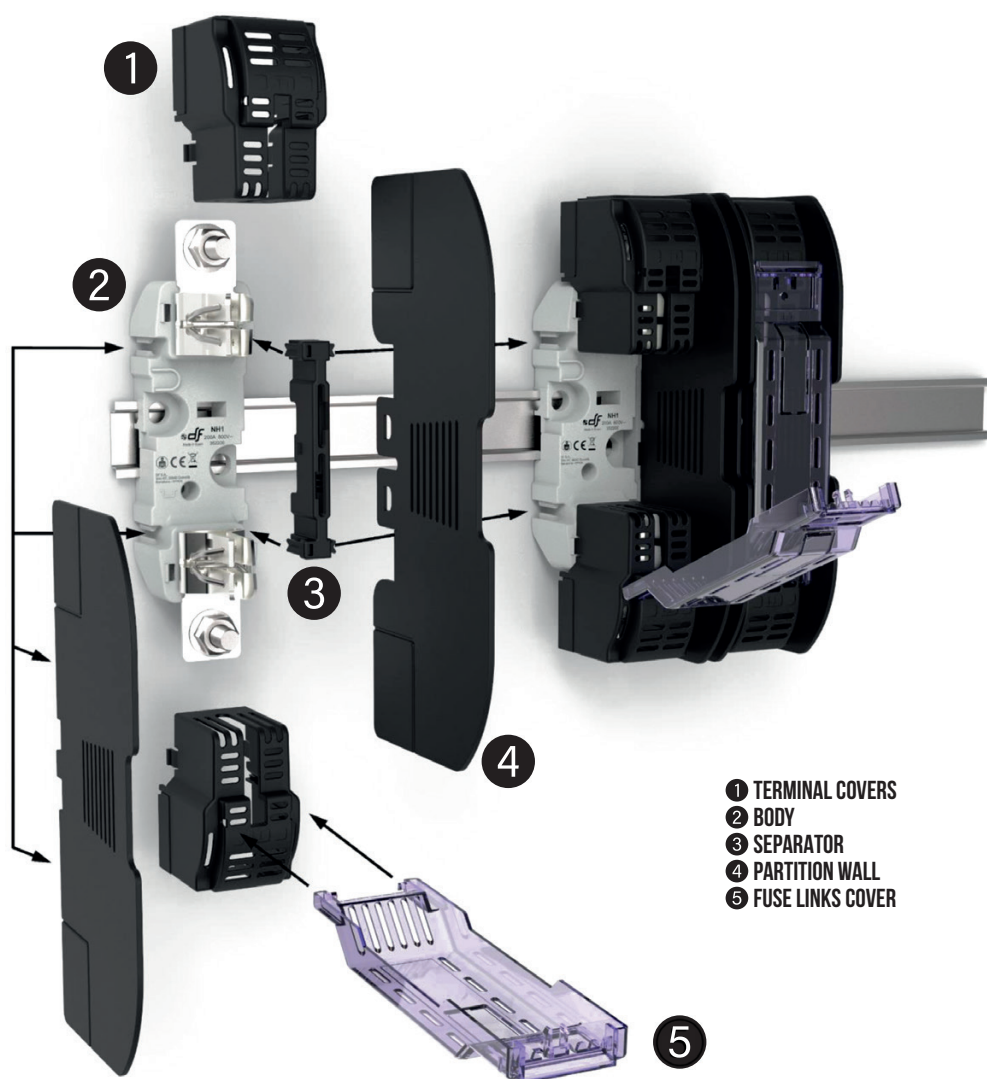
A	B
215	76

Weight

1P	320gr
3P	1kg
1P with microswitch	440gr

Weight without packing

Accessories assembly



The fuse holder allows using simultaneously a microswitch for NH fuse links and IP20 protection accessories





PROTECTING THE WORLD



HEAD OFFICE AND FACTORY

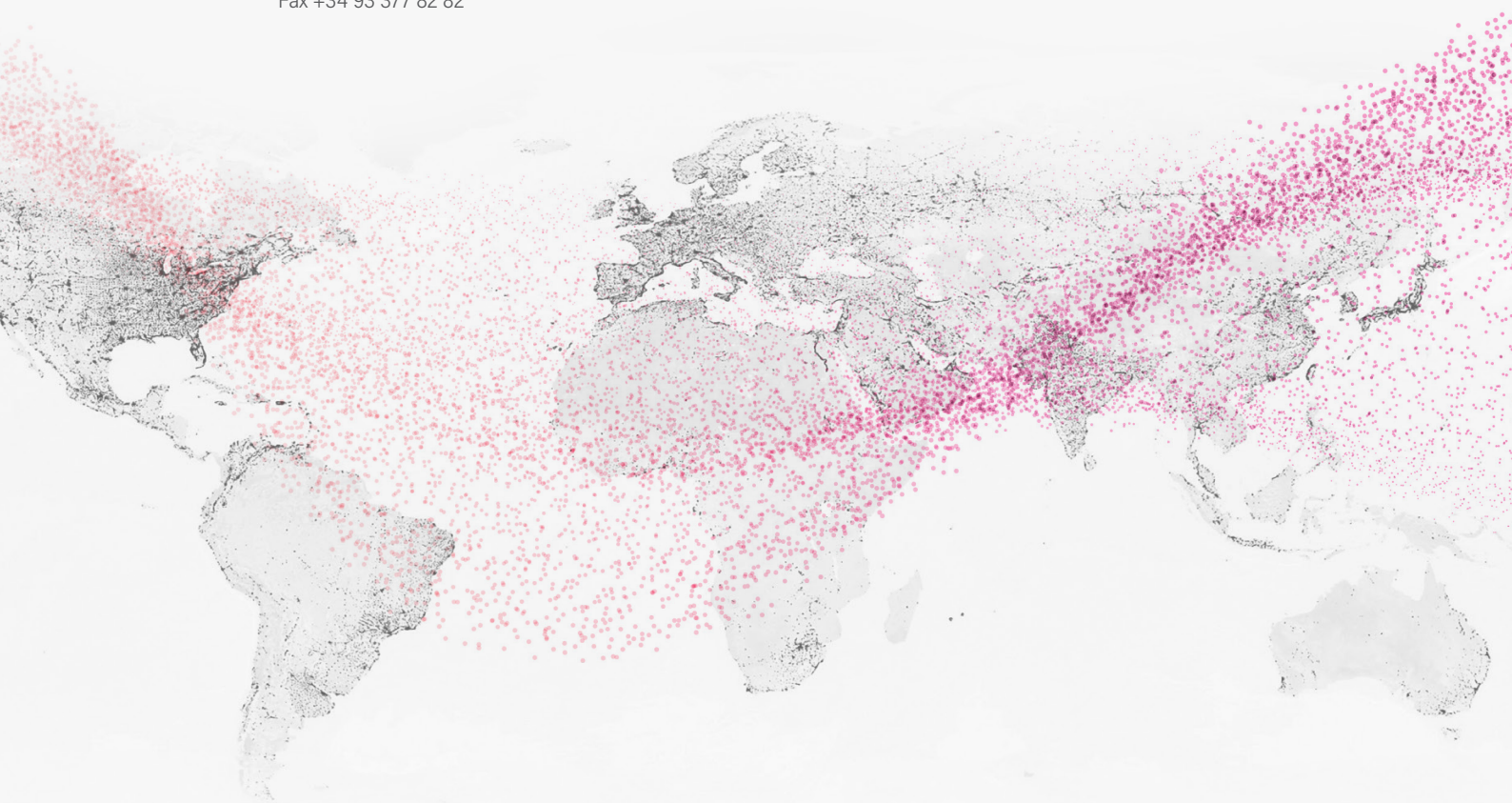
SILICI, 67-69
08940 CORNELLA DE LLOBREGAT
BARCELONA · SPAIN
Tel. +34 93 377 85 85
Fax +34 93 377 82 82

INTERNATIONAL SALES

Tel. +34 93 475 08 64
Fax +34 93 480 07 75
export@dfelectric.es

NATIONAL SALES

Tel. 93 475 08 64
Fax 93 480 07 76
comercial@dfelectric.es



dfelectric.es



According to the waste of electrical and electronic equipment directive, electrical material should not be part of the usual waste. This symbol alerts users that these products should be recycled according to local environmental waste disposal regulations.



The "electro technical expert" logo marked on the products included in this data sheet indicates that the installation of these products must be carried out by expert personnel with specialized knowledge.



To prevent electrical hazards, carry out the installation without voltage.



Safety notice
Please capture the following QR code and read our safety notice carefully before installing our products.



The data reflected in this technical record are subject to the correct installation of the product in accordance with manufacturer's instructions, relevant installation standards and professional practices, maintained and used in applications for which they were made.

The products described in this document have been designed, developed and tested in accordance with specific standard. They are considered components that are integrated as part of installation, machine or equipment. The correct general operation of the referred product is responsibility of the manufacturer of the installation, machine or equipment.

DF ELECTRIC cannot guarantee the characteristics of an installation, machine or equipment that has been designed by a third party. Once a product has been selected, the user must verify that it is appropriate for its application, through the verifications and/or tests that it deems appropriate.

DF ELECTRIC retains the right to change the dimensions, specifications, materials or design of its products at any time with or without notice.

©2022 DF Electric. All rights reserved