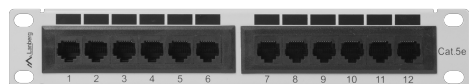
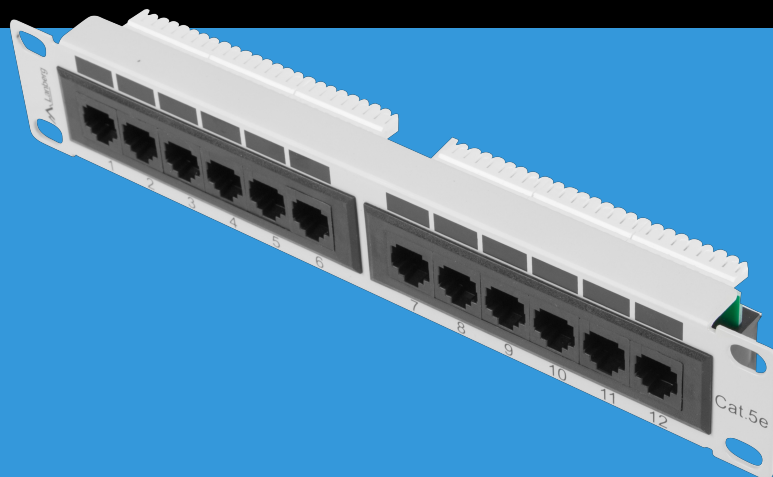


PPU5-9012-S

# PATCH PANEL 12 PORT 1U 10" CAT.5E UTP



## PRODUCT FEATURES:

- 12 Unshielded RJ-45 Cat. 5e Ports – A reliable choice for high-speed standard network installations.
- Compact 10" Size and 1U Height – Perfect for small rack cabinets and space-constrained setups.
- IDC/LSA Terminals – Enable quick and durable cable terminations using common punch-down tools.
- Clearly Numbered Port Labels – Simplify cable identification and network management.
- Lightweight Metal Housing – Combines durability with low weight (only 0.27 kg) for easy installation.

## PRODUCT SPECIFICATION:

Number of ports	12
Connector type	Equipped
Size	10",
ICT height	1 U
ICT category	Cat. 5/5e
Shielding	No
Equipped with connectors	Yes
Fitting type	IDC/LSA
Material	Metal
Standard	T568A, T568B
Ports identification in the form of numbered fields	Yes
RAL color	RAL7035
Colour	Gray
Dimensions	32,5 x 215 x 44,45 mm
Weight	0,27 kg