

## Data sheet

Commercial Art.No.: 73.351.0635.1

hood BAS GOT GH 6HM20 A1

Hood revos basic made of aluminum, for single locking lever with threaded hole M20 on the front, high version, 6-poles



Commercial Art.No.	73.351.0635.1
EAN	4049088220081
Order Unit	1

## Technical data

### general

housing material	aluminum
color	grey
surface	with powder coating
UV resistant	yes
flammability class of insulation material acc. with UL94	other
operating temperature range min.	-40 °C
operating temperature range max.	120 °C

### model

construction	6H
model of the housing	male
locking mechanism	single locking lever
cable entry	front side
type of cable	thread
with cable screw gland	no
thread size M	20
thread size PG	
hinged lid	no
EMC-version	no
length	74 mm
width	43 mm
height	70 mm

### classification

ECLASS 11	
-----------	--

ECLASS 8.1	27440202
ETIM 9.0	EC000437
ETIM 8.0	EC000437
ETIM 7.0	EC000437
ETIM 6.0	EC000437
ETIM 5.0	EC000437
ETIM 4.0	EC000437
ETIM 3.0	EC000437

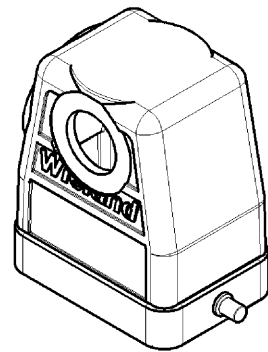
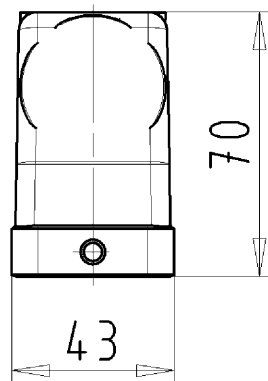
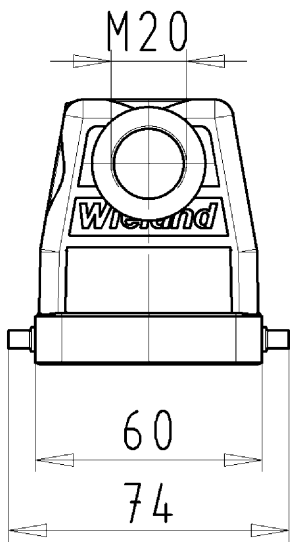
#### product compliance

ROHS conformity status	compliant/exempted
ROHS exceptions	III-6(c)
REACH-SVHC conformity status	Duty-To-Declare
REACH-SVHC substances	Lead
REACH-SVHC CAS numbers	7439-92-1

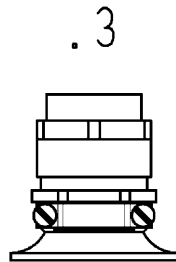
#### Fits with

Commercial Art.No.:	Article-type description:	Description:
70.300.0602.0	female insert BAS BUS 6 2,5 50 AG	Female insert revos basic, 6-poles, rated current: 16A, rated voltage: 500V, with silver-plated contacts
70.300.0640.0	female insert BAS BUS 6 2,5 50	Female insert revos basic, screw type, 6-poles, rated current: 16A, rated voltage: 500V, with tin-plated contacts
70.301.0640.0	female insert BAS BUS 6 2,5 50 AU	Female insert revos basic, 6-poles, rated current: 16A, rated voltage: 500V, with gold-plated contacts
70.302.0640.0	female insert BAS BUS OD 6 2,5 50	Female insert revos basic, 6-poles, rated current: 16A, rated voltage: 500V, with tin-plated contacts
70.310.0602.0	male insert BAS BUS OD 6 2,5 50	Female insert revos basic, 6-poles, rated current: 16A, rated voltage: 500V, with tin-plated contacts
70.310.0640.0	male insert BAS STS 6 2,5 50	Male insert revos basic, screw type, 6-poles, rated current: 16A, rated voltage: 500V, with tin-plated contacts
70.311.0640.0	male insert BAS STS 6 2,5 50 AU	Male insert revos basic, 6-poles, rated current: 16A, rated voltage: 500V, with gold-plated contacts
70.312.0640.0	male insert BAS STS OD 6 2,5 50	Male insert revos basic, 6-poles, rated current: 16A, rated voltage: 500V, with tin-plated contacts
70.500.0653.0	female insert BAS BUF 6 2,5 50	Female insert revos basic, spring type, 6-poles, rated current: 16A, rated voltage: 500V, with silver-plated contacts
70.510.0653.0	male insert BAS STF 6 2,5 50	Male insert revos basic, spring type, 6-poles, rated current: 16A, rated voltage: 500V, with silver-plated contacts
70.502.0653.0	female insert BAS BUM 6 2,5 50 AG	Female insert revos basic, 6-poles, rated current: 16A, rated voltage: 500V, with silver-plated contacts
70.512.0653.0	male insert BAS STM 6 2,5 50 AG	Male insert revos basic, 6-poles, rated current: 16A, rated voltage: 500V, with silver-plated contacts
70.700.0658.0	female insert BAS BUC 6 50	Female insert revos basic, 6-poles, rated current: 16A, rated voltage: 500V, with tin-plated contacts
70.710.0658.0	male insert BAS STC 6 50	Male insert revos basic, 6-poles, rated current: 16A, rated voltage: 500V, with tin-plated contacts
72.300.0653.0	female insert BAS BUS 6 2,5 69	Female insert revos basic, 6-poles, rated current: 16A, rated voltage: 690V, with tin-plated contacts
72.310.0653.0	male insert BAS STS 6 2,5 69	Male insert revos basic, 6-poles, rated current: 16A, rated voltage: 690V, with tin-plated contacts
72.700.0658.0	female insert BAS BUC 6 69	Female insert revos basic, 6-poles, rated current: 16A, rated voltage: 690V, with tin-plated contacts



72.710.0658.0	male insert BAS STC 6 69	Male insert revos basic, 6-poles, rated current: 16A, rated voltage: 690V, with tin-plated contacts
73.800.2453.0	female insert DD BUC 24 1,5 25	revos DD 24 pole + ground, female insert 250V/10A, crimp connection
73.810.2453.0	male insert DD STC 24 1,5 25	revos DD 24 pole + ground, male insert 250V/10A, crimp connection
70.405.0653.0	female insert BAS BUP 6 2,5 50 AG	Female insert revos basic, 6-poles, rated current: 16A, rated voltage: 500V, with silver-plated contacts
70.415.0653.0	male insert BAS STP 6 2,5 50 AG	Male insert revos basic, 6-poles, rated current: 16A, rated voltage: 500V, with silver-plated contacts
70.810.1056.0	male insert BAS STCK 10 50 PC	Male insert revos basic, 10-poles, polycarbonate insert, rated current: 16A, rated voltage: 500V, with gold-plated or silver-plated contacts
70.800.1056.0	female insert BAS BUCH 10 50 PC	Female insert revos basic, 10-poles, polycarbonate insert, rated current: 16A, rated voltage: 500V, with tin-plated contacts



Varianten/Variants



73.351.0635.3	BAS GOT GH 6HM20 A 3	KV mit Zugentlastung und Knickschutz, IP54 montiert /CG with strain relief and bend support, IP54 ass.	
73.351.0635.2	BAS GOT GH 6HM20 A 2	Zwischenstutzen montiert /Bushing assembled	
73.351.0635.1	BAS GOT GH 6HM20 A 1	Gewindebohrung /Thread hole	X
73.351.0635.0	BAS GOT GH 6HM20 A 0	Kabelverschraubung (KV), IP54 montiert /Cable Gland (CG), IP54 assembled	
Bestellnummer /Order number	Typ /Type	Varianten /Variants	dar- gestellt /drawn
Weitere Daten siehe KATALOG oder eKatalog. Additional data see CATALOG or eCatalog.		www.wieland-electric.com eshop.wieland-electric.com	

Tolerierung Size ISO 14405 (Tolerance system Size ISO 14405). (This ISO-standard describes the envelope principle. According to the envelope principle the deviations of form and parallelism are limited by the size tolerances).						ja/yes <input checked="" type="checkbox"/> Stoffverbots- und Deklarationsliste nach UU-TQM-05/03 ist einzuhalten. Conformity with Wieland document UU-TQM-05/03 (list of prohibited / declaimable hazardous substances) to be declared!						
Freitoleranz nach General tolerance - - - - -			CAD - Zeichnung, keine manuellen Änderungen CAD - drawing, no manual modifications allowed			1.Verwendung: First Use: - - - - -			Blatt: 1 von 1 Sheet: 1 of 1			
	/		Werkstoff/Material		2013	Tag/Date	Name	T	Zeichnung Nr./Drawing No.			Index
	/		Aluminium		gezeichnet drawn	11.07.	Hoffmann		73.351.0635.0 13K			
	/		beschichtet/coated		geprüft checked	-	-					
	/		grau/grey		Normgepr. Stand. check	-	-					
	/	Maßstab/Scale 1:2							Maße in mm/Dimensions are in mm			
	/	Vol.	mm³	Ofl./Surf.	mm²	Ersatz für/Replacement for: -						
	/		wieland		Type		Benennung/Title					
	/				revos		GEHAEUSEOBERTEIL					
	/				BASIC		Baugröße 6H Kabelabgang von vorne M20 hood size 6H cable outlet in front M20					
Index	Datum / Blatt Date / Sheet				hohe Bauf.							
Änderung/Revision			Elektrische Verbindungen									

Weitergabe sowie Vervielfältigung dieses Dokuments, Verwertung und Mitteilung seines Inhalts sind verboten, soweit nicht ausdrücklich gestattet.  
The reproduction, distribution and utilization of this document as well as the communication of its contents to others without express authorization is prohibited.