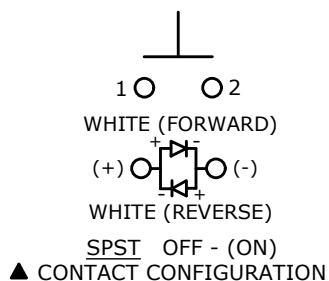


RECOMMENDED  
PANEL CUT-OUT  
1-6mm THICKNESS

▲ SWITCH FUNCTION

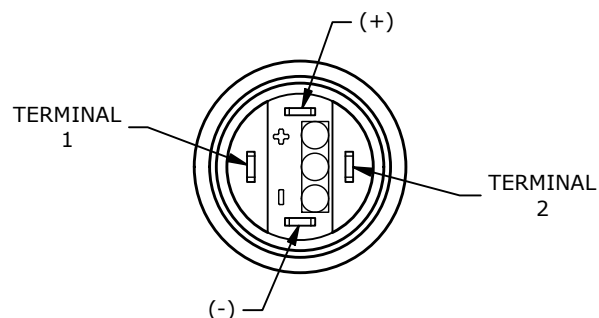
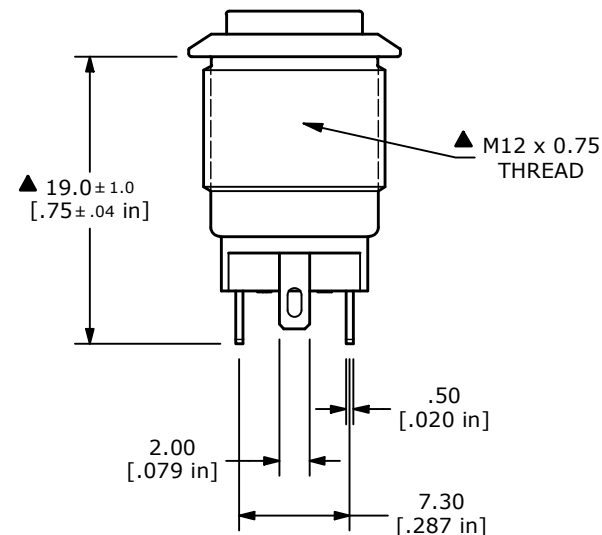
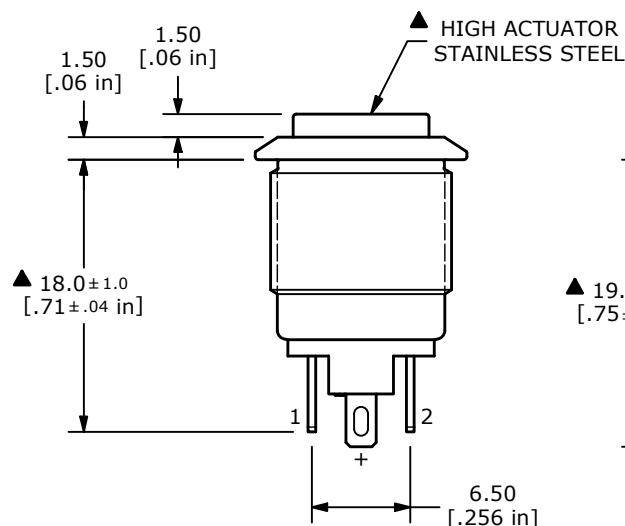
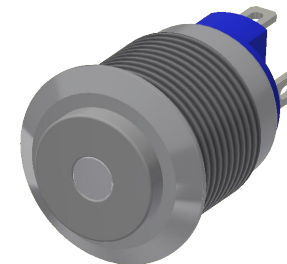
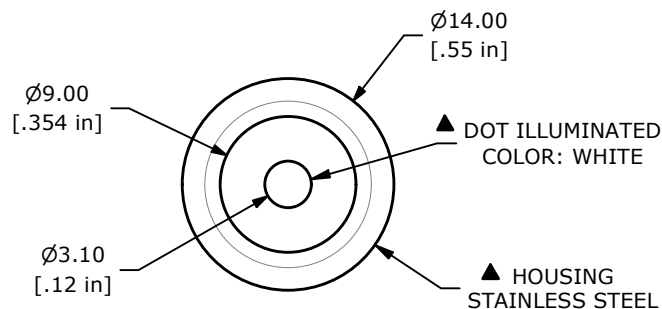
POS. 1	POS. 2
OFF	(ON)
OPEN	1-2

(ON) = MOMENTARY



## NOTE:

1. ALL DIMENSIONS IN MM [INCH]
2. GENERAL TOLERANCE: X.X =  $\pm 0.4$   
X.XX =  $\pm 0.25$
3. TERMINAL NUMBERS FOR REF. ONLY
4. RATING: 2A @ 36VDC
5. CONTACT RESISTANCE: 50m $\Omega$  MAX.
6. INSULATION RESISTANCE: 100M $\Omega$  @ 500VDC
7. DIELECTRIC STRENGTH: 1,500V, RMS 50Hz, 1 MINUTE
8. ELECTRICAL LIFE: 200,000 CYCLES
9. CONTACT MATERIAL: SILVER
10. OPERATING TEMPERATURE: -40°C to 85°C
11. INGRESS PROTECTION: IP67
12. LED VOLTAGE: BASE VOLTAGE 2.8V TYP.
13. ▲ DENOTES CRITICAL PARAMETER
14. HARDWARE INCLUDED: HEX NUT AND O-RING (NOT SHOWN)



REV	ECO NO	DESCRIPTION	DATE	BY	E-SWITCH®				OBJECT ID
C	ECO-102720	print update	05/06/24	MW	TITLE PV0H240SS-201				000002295
					SCALE	DATE	DR	DWG	REV
					2:1	2/14/2020	MW	52-PV0H240SS201	C

THE INFORMATION CONTAINED IN THIS DOCUMENT IS PROPRIETARY TO  
E-SWITCH AND IS NOT TO BE COPIED OR TRANSFERRED