

# YE-L2 SERIES (Single Phase Two-Stage Filters)



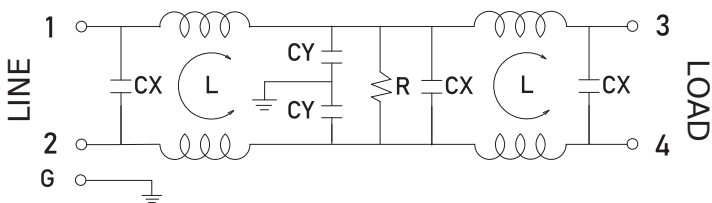
## Features

- The YE series is a special designed single phase two-stage filter with both common mode and normal mode performing high noise suppression for most digital electronic equipment.
- The rated current can be offered from 5 to 20 amps.
- Various output selections such as fast-on terminal, M4 screw terminals and lead wire.
- Low leakage current version upon requested.
- Approved by UL, CSA, VDE and CE
- Application for Electrical and electronic equipment, Household equipment, Automation equipment, Fitness machine, Various noisy applications requiring high filter performance
- Custom-specific versions are available on request.

## Technical Specification

Rated voltage	125/250VAC
Rated currents	Up to 20A
Operating frequency	50/60Hz
Hipot rating(Line-to-line)	1450VDC
Hipot rating(Line-to-ground)	2250VDC
Operating temperature	-25~+85℃
Safety compliance	

## Typical electrical schematic

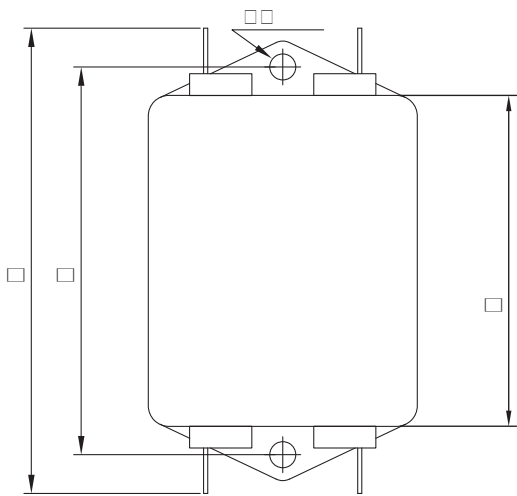


## Filter Selection Table

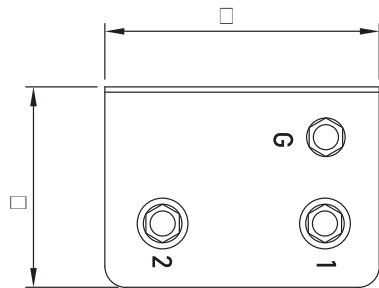
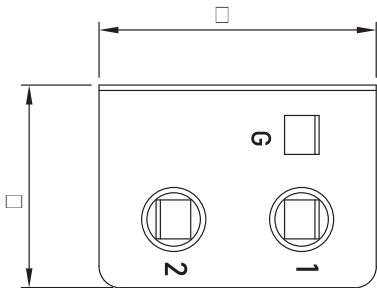
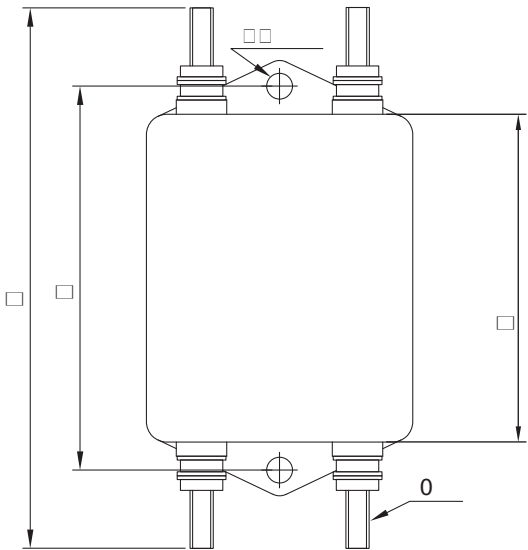
Part No.	Rated Current (A)	Inductance L(mH)	Capacitance CX(μF)	Capacitance CY(pF)	Resistance R(ohm)	Output connections
YE05T1L2	5				10M	Fast-on terminal (optional lead-wire)
YE10T1L2	10					
YE15T1L2	15					
YE20T1L2	20					
YE05T4L2	5					M4 Screw terminals
YE10T4L2	10					
YE15T4L2	15					
YE20T4L2	20					

Physical Dimensions: (mm)

<(7/



<(7/



Typical Attenuation & RPPRQPRGH 1RUPDOPRGH

