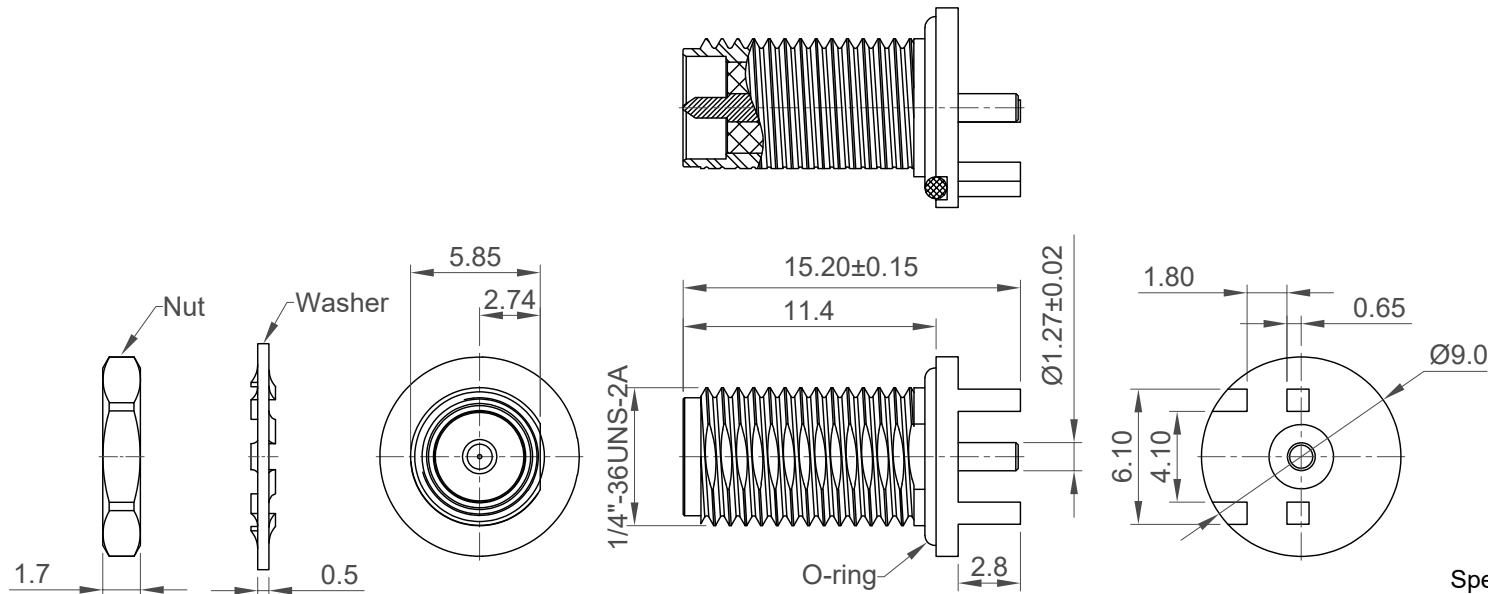
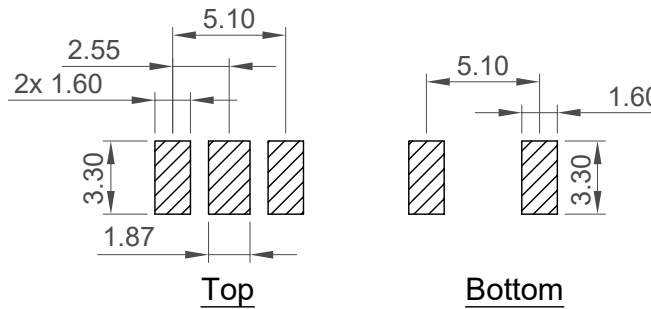
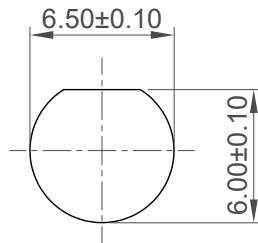


H
G
F
E
D
C
B
A



Recommended Mounting Hole



Recommended Foot Print

Tolerance: ±0.05

Ordering Grid

RFPC-SMA40-FN-180-X [Request Samples and Quotation](#)

Washer and nut options:
A = All Assembled with Connector (Standard)
Blank = Separately Packed

Specifications

Material
Body: Brass, Gold Plated.
Pin: Brass, Gold Plated.
Insulator: PTFE, White.
O-ring: Silicone Rubber, Red.
Washer: Brass, Gold Plated.
Nut: Brass, Gold Plated.

Electrical

Impedance: 50 Ohm
Working Frequency Range: DC - 18GHz

Mechanical & Environmental

Operating Temperature: - 55 °C ~ +125°C
Ingress Protection Rating: IP67
IP6x - Dust tight - no particle ingress.
IPx7 Waterproof for 30 minutes up to 1m underwater.
(mated with plug, the plug has inner gasket)
Recommended PCB Thickness: 1.60mm.
Other PCB thickness available on request

Part Number		Product Description	
RFPC-SMA40-FN		RP SMA Bulkhead Jack With O-ring, Edge Mount,	
Drawing Date		IP67, 18GHz	
18th February 2025			
By	CC	Tolerances (Except as Noted)	Units:
Detail	Drawing Release	Length	Metric (mm)
Revision	A	Angle	± 1°
Date	18/02/25	X.X ± 0.20	3rd Angle Projection
		X.XX ± 0.10	
		RoHS COMPLIANT 2011/65/EU	
		Deca-SIDE	
		This drawing is confidential and copyright of Global Connector Technology, Ltd (GCT). This drawing must not be copied or disclosed without written consent. E & OE	
		Not to Scale	
		Drawn By CC	
		Sheet No. 1/1	

GCT
www.gct.co