

# AdaBV140



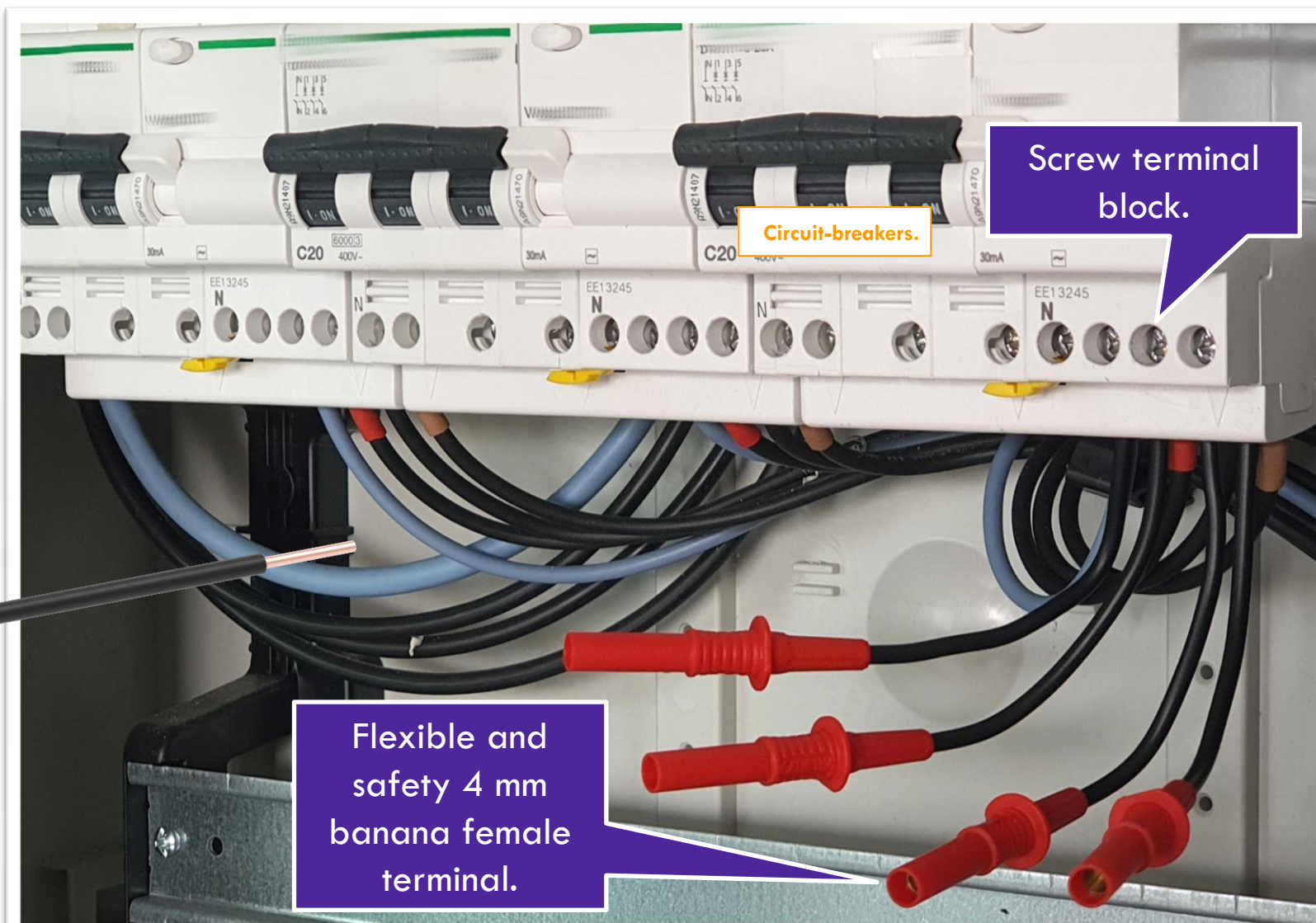
## DATA SHEET 1 of 6.

Designation : 1000V CAT III adaptor for screw terminal block.

Applications : to connect measuring devices to electrical board screw terminal blocks.

Electro-PJP introduces its screw terminal block adaptor with 1000 V CAT III safety : part number AdaBV140

AdaBV140 converts screw terminal blocks into flexible and safety 4 mm banana female terminals to connect measuring devices. AdaBV140 passes itself for a rigid copper wire and inserts into screw terminal blocks.



# AdaBV140



## DATA SHEET 2 of 6.

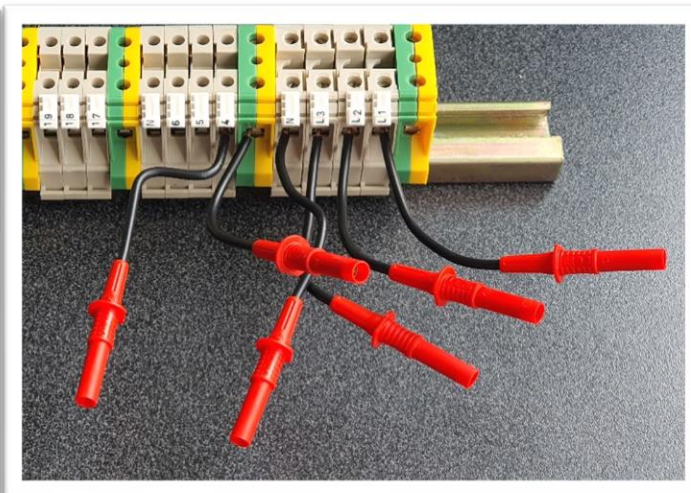
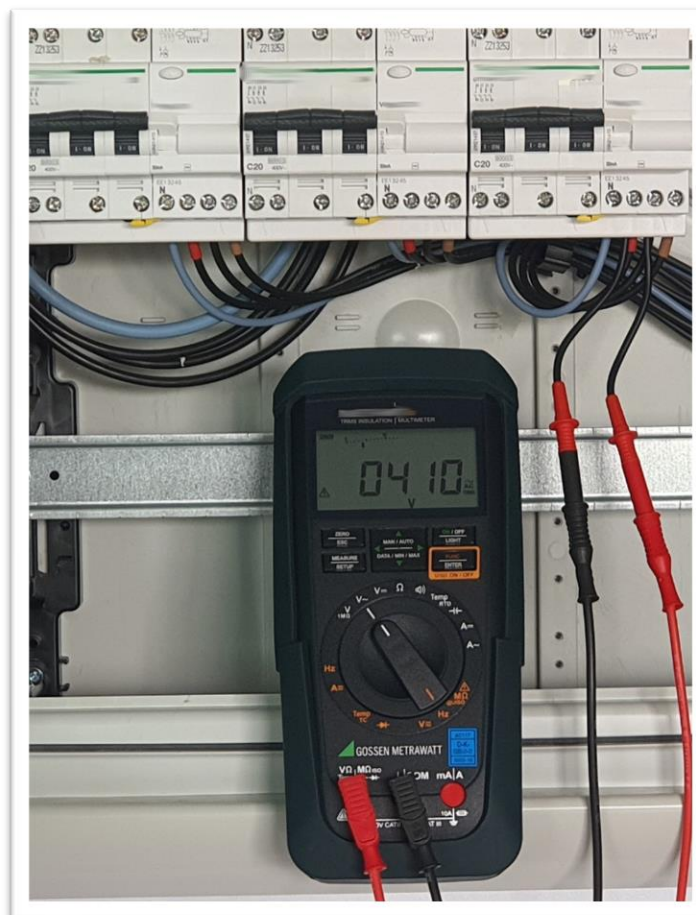
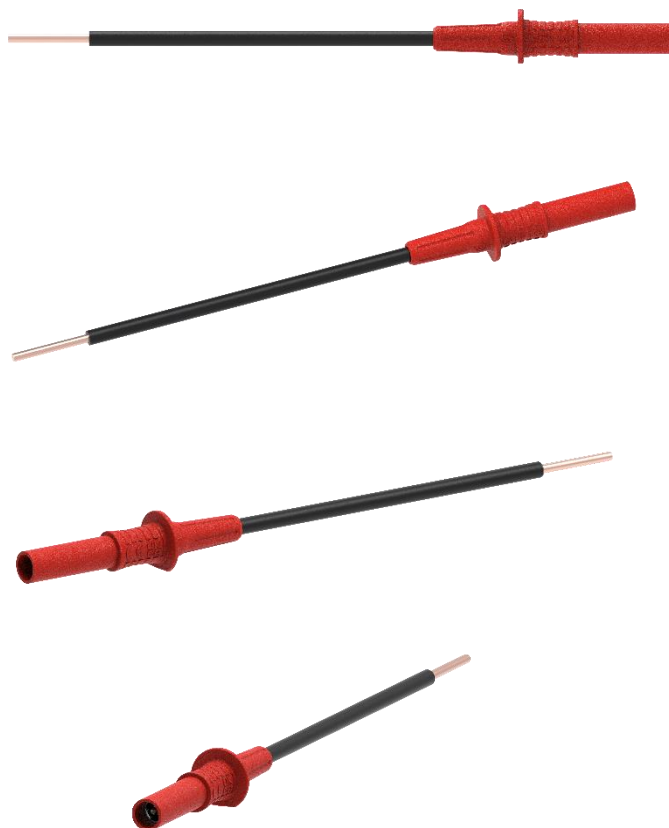
Designation : 1000V CAT III adaptor for screw terminal block.

Applications : to connect measuring devices to electrical board screw terminal blocks.

Electro-PJP introduces its screw terminal block adaptor with 1000 V CAT III safety : part number AdaBV140

AdaBV140 appears to be a stripped 2,50 mm<sup>2</sup> rigid copper wire to connect to screw terminal block. Its other end is a 4 mm banana female terminal designed to connect to measuring devices.

The length and flexibility of AdaBV140 shaft comply with various configurations, directions and positions of screw terminal blocks.





# AdaBV140



## DATA SHEET 3 of 6.

Designation : 1000V CAT III adaptor for screw terminal block.

Applications : to connect measuring devices to electrical board screw terminal blocks.

The 1000 V CAT III safety of AdaBV140 responds to the three-phase electrical board dangers. AdaBV140 allows electrotechnicians to connect electrical board screw terminal blocks to power quality analyzers, multimeters, oscilloscopes, special control benches, etc. to perform maintenance on industrial electrical cabinets, troubleshooting on industrial equipment, monitoring and analyzing of voltages and harmonics on electrical installations, verification on industrial machines after manufacturing, etc.

The screw terminal blocks must be powered off before connecting to AdaBV140. (Also, they must be powered off before disconnecting.) Once connected to screw terminal blocks, the AdaBV140 protective fingerguard allows electrotechnicians to connect and disconnect the measuring devices with live voltage.



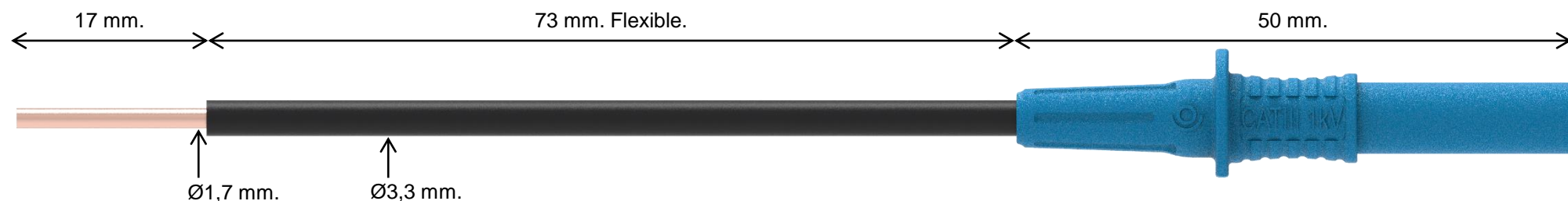
# AdaBV140



## DATA SHEET 4 of 6.




Designation : 1000V CAT III adaptor for screw terminal block.

Applications : to connect measuring devices to electrical board screw terminal blocks.



Stripped 2,50 mm<sup>2</sup> (approx. AWG13) rigid copper wire to connect to screw terminal blocks.

4 mm banana female terminal.  
Connects to 4 mm banana test leads.

Designation.	1000V CAT III adaptor for screw terminal block.
Full designation.	Adaptor made of a flexible insulated shaft to connect to screw terminal blocks and a 4 mm banana female terminal.
Connection durability (temporary or semi-temporary or durable).	Durable connection. Several days, months, etc. Connects to screw terminal blocks compliant with 2,50 mm <sup>2</sup> (approx. AWG13) rigid copper cables. The terminal block screw is tightened to the torque value indicated by the screw terminal block for 2,50 mm <sup>2</sup> rigid copper wire.
Applications.	Connects electrical board screw terminal blocks to power quality analyzers, multimeters, oscilloscopes, special control benches, etc. to perform maintenance on industrial electrical cabinets, troubleshooting on industrial equipment, monitoring and analyzing of voltages and harmonics on electrical installations, verification on industrial machines after manufacturing, etc.
Safety.	1000 V CAT III / 600 V CAT IV, reinforced insulation. 36 amperes at 40 °C ambient temperature. According to EN / IEC 61010-031. Disconnecting and connecting to screw terminal blocks must be performed while the power supply is off.
Markings.	CAT III 1 kV   . And the shaft can bear any identification markers complying with insulated 2,50 mm <sup>2</sup> rigid copper cable.
Weight.	0,007 kg.
Colors.	
Packaging.	Bag of 10 adaptors of the same color (default packaging).
Part number.	AdaBV140- Color

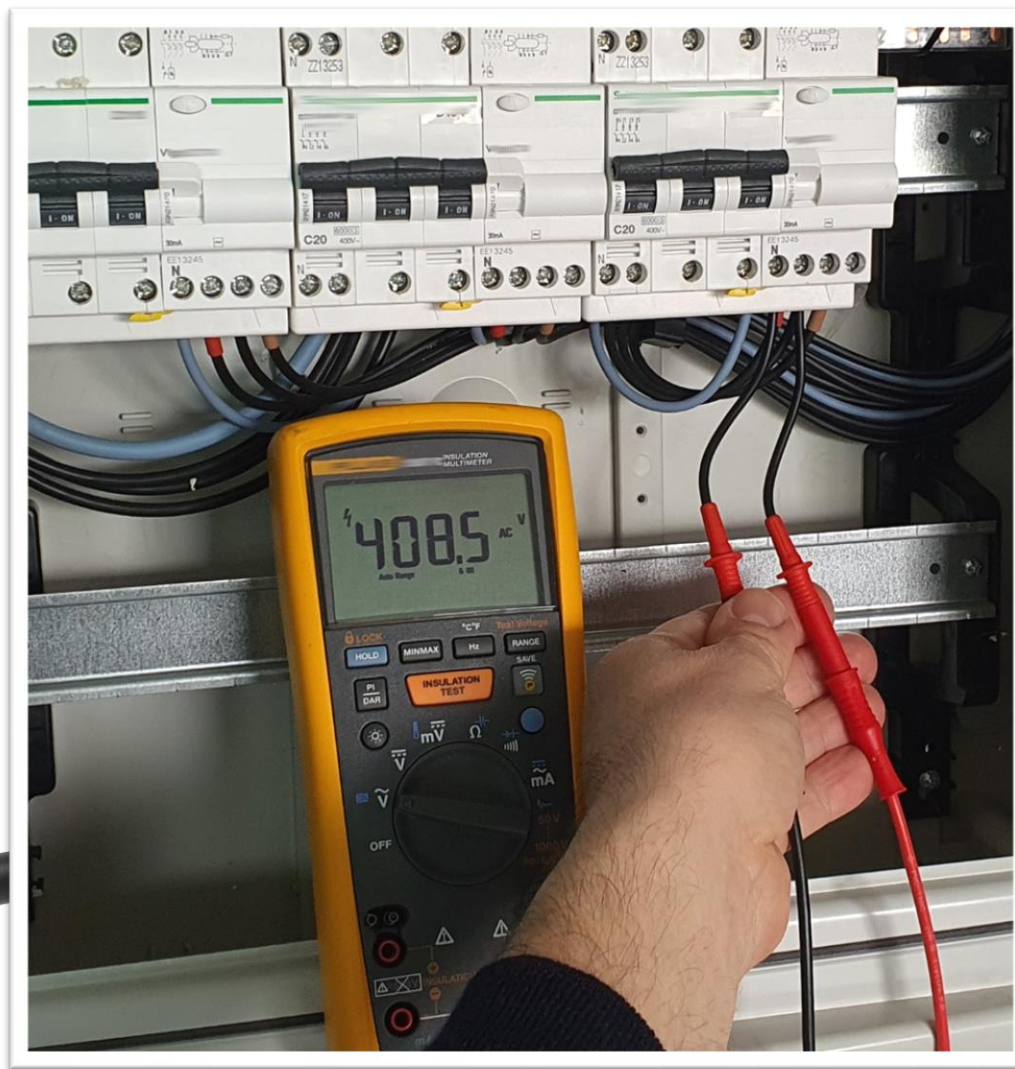
# AdaBV140



## DATA SHEET 5 of 6.

Designation : 1000V CAT III adaptor for screw terminal block.

Applications : to connect measuring devices to electrical board screw terminal blocks.





# AdaBV140



## DATA SHEET 6 of 6.

Designation : 1000V CAT III adaptor for screw terminal block.

Applications : to connect measuring devices to electrical board screw terminal blocks.



Feel free to contact us at :

[sales@electro-pjp.com](mailto:sales@electro-pjp.com)

+33 (0) 384 821 330

[www.electro-pjp.com](http://www.electro-pjp.com)

ELECTRO-PJP  
ZI Charmes d'Amont  
13 rue de Madrid  
39500 TAVAU  
FRANCE

### Conformity

- CE marking. UKCA marking.
- European Directive "Low Voltage Directive" 2014/35/UE.
- International / European standard EN / IEC 61010-031.
- European Directive "RoHS" 2011/65/EU. European Directive 2015/863/EU.
- European regulation n°1907 / 2006 "REACH".
- European regulation 2017 / 821 "Conflict minerals".
- British statutory requirements 2016 No. 1101. The Electrical Equipment (Safety) Regulations.
- American "TSCA" Toxic Substances Control Act.

### Origin

- Made and designed in France.